

PRODUCT INFORMATION PACKET



Model No: D186
Catalog No: D186
1/20 HP OEM Replacement Motor, 1550 RPM, 460 Volts, 3.3" Diameter, Semi Enclosed
HVAC/R OEM Replacement Motors



Regal and Fasco are trademarks of Regal Beloit Corporation or one of its affiliated companies.
©2019 Regal Beloit Corporation, All Rights Reserved. MC017097E

REGAL



Nameplate Specifications

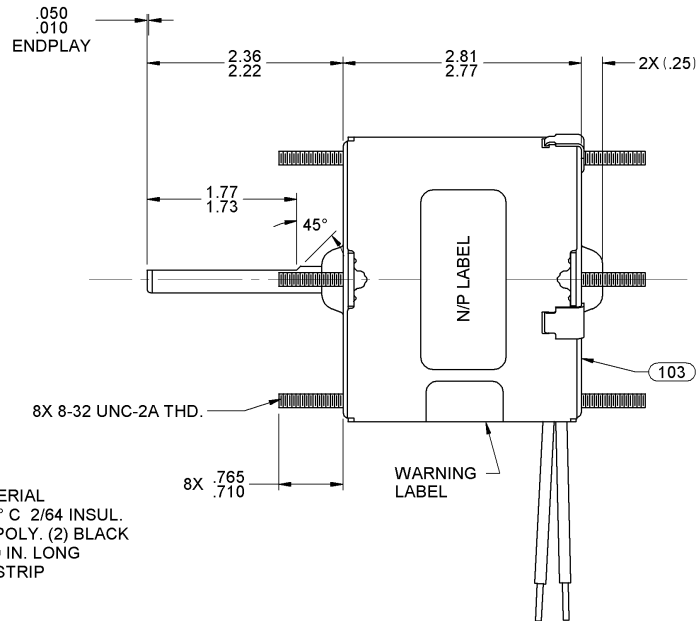
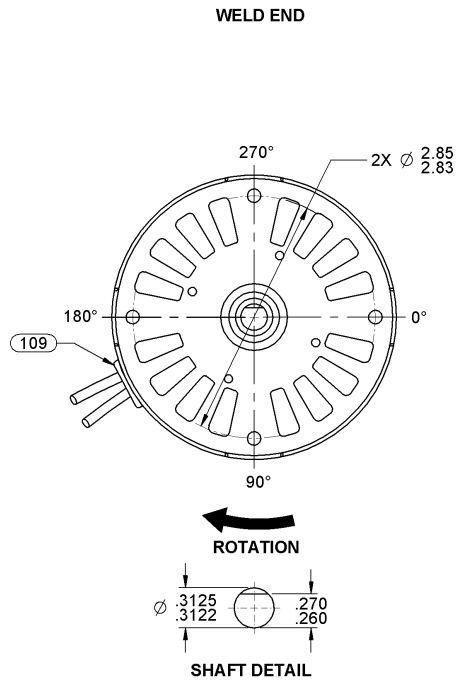
Output HP	1/20 Hp	Output KW	0.04 kW
Frequency	60 Hz	Voltage	460 V
Current	0.50 A	Speed	1550 rpm
Service Factor	1	Phase	1
Duty	Air Over	Insulation Class	B
Frame	3.3	Enclosure	Open Air Over
Thermal Protection	Thermally Protected	Ambient Temperature	40 °C
UL	No	CSA	N
CE	N		

Technical Specifications

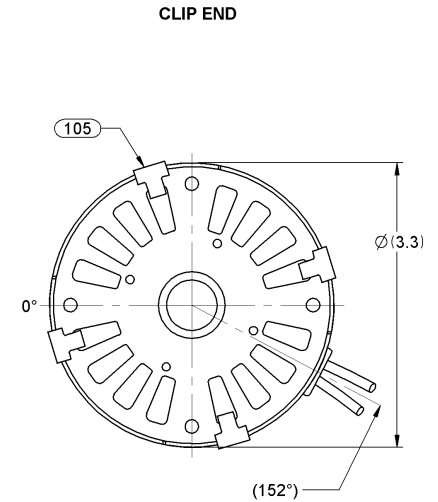
Electrical Type	Shaded Pole	Starting Method	Across The Line
Poles	4	Rotation	Clockwise Shaft End
Mounting	Extended Studs	Drive End Bearing	Sleeve
Opp Drive End Bearing	Sleeve	Frame Material	Steel
Shaft Type	Flat	Overall Length	5.42 in
Frame Length	2.57 in	Shaft Diameter	0.313 in
Shaft Extension	2.3 in		

This is an uncontrolled document once printed or downloaded and is subject to change without notice. Date Created:29/10/2019

07	CHANGED N/P FORMAT, UPDATED STANDARDS	PLA 02/26/08	08	REMOVED UL, CSA LOGO'S AND BARCODE FROM N/P LABEL	SD 2-12-10	09	REVISED PACKING AND ADDED CARTON LABELS	4004953 MLM 03/15/12	STANDARD TOLERANCES: ANGULAR +/- 1 DEGREE 2 PLACE DECIMAL +/- .01 3 PLACE DECIMAL +/- .005
----	---------------------------------------	--------------	----	---	------------	----	---	-------------------------	---



LEAD MATERIAL
18 GA 125° C 2/64 INSUL.
X-LINKED POLY. (2) BLACK
14.00/12.00 IN. LONG
.68/.56 IN. STRIP



- NOTES:
1. PACK 270 MOTORS MAX. PER PALLET
 2. HIPOT MOTORS AT 2350 VOLT FOR ONE SECOND
 3. NO PACKAGING TAPE OVER CARTON LABEL.

6129 4176

WARNING

WHEN OPERATED ON 480 V. SPECIAL CARE SHOULD BE TAKEN WITH HANDLING, CONNECTIONS AND GROUNDING TO AVOID SHOCK HAZARD.

0046-4072

0046-4282

Fasco Industries, Inc. Motor Division

FASCO

Assembled In Mexico

No. 71638938 TYPE 63B1 T.P. AO

460 V 60 Hz Class B

0.5 A 1550 RPM 1/20 HP

Model D186 Max Amb: 40°C

C SAFETY WARNING

This Motor Must Be Grounded in Accordance With Local Or National Electrical Codes To Prevent Possible Injury Due To Electrical Shock

61299553

FRONT SHAFT POSITION		* TYPICAL PERFORMANCE AT 460 VOLTS 60 Hz.										CUSTOMER: FASCO DIST.		FASCO MOTORS GROUP AC MOTOR/BLOWER DIVISION															
HORIZONTAL	MOTOR SPEED	IDLE			LOADED			LOCKED			BREAK	PART NUMBER: D186		CONFIDENTIAL; DO NOT DUPLICATE OR DISCLOSE TO THIRD PARTIES WITHOUT WRITTEN PERMISSION OF FASCO MOTORS GROUP, AC MOTOR/BLOWER DIVISION.															
		R.P.M.	AMP.	WATT	IN.OZ.	R.P.M.	AMP.	WATT	IN.OZ.	AMP.	WATT	IN.OZ.	APPLICATION: COUNTER SALES					MOTOR TYPE					DRAWING NUMBER						
		1763	.37	88	36.4	1550	.44	139	14.7	.64	201	39.3	MOTOR WEIGHT: 3.13 LBS.		ENVIRONMENT: DRY					SHADED POLE					7163 8938				
CUSTOMER APPROVAL:												FINISH COLOR: BLACK		DATE DRAWN: 2-6-2002					DRAWN BY: S. DALTON					REV. 09					
SIGNED:												DATE DRAWN: 2-6-2002		DATE DRAWN: 2-6-2002					DATE DRAWN: 2-6-2002					DATE DRAWN: 2-6-2002					
DATE:												DATE DRAWN: 2-6-2002		DATE DRAWN: 2-6-2002					DATE DRAWN: 2-6-2002					DATE DRAWN: 2-6-2002					