

PRODUCT INFORMATION PACKET

FASCO®

Model No: D174
Catalog No: D174
1/10 HP Fan & Blower Motor, 1500 RPM, 115 Volts, 4.4" Diameter, OAO
Self Cooled Motors



Regal and Fasco are trademarks of Regal Beloit Corporation or one of its affiliated companies.
©2020 Regal Beloit Corporation, All Rights Reserved. MC017097E

REGAL



Nameplate Specifications

Output HP	1/10 Hp	Output KW	0.07 kW
Frequency	60 Hz	Voltage	115 V
Current	3.5 A	Speed	1500 rpm
Service Factor	1	Phase	1
Duty	Air Over	Insulation Class	A
Frame	4.4	Enclosure	Open Air Over
Thermal Protection	Thermally Protected	Ambient Temperature	40 °C
UL	Recognized	CSA	Y
CE	N		

Technical Specifications

Electrical Type	Shaded Pole	Starting Method	Across The Line
Poles	4	Rotation	Clockwise Shaft End
Mounting	Extended Studs	Drive End Bearing	Sleeve
Opp Drive End Bearing	Sleeve	Frame Material	Na
Shaft Type	Flat	Overall Length	6.99 in
Shaft Diameter	0.375 in	Shaft Extension	2.9 in
Connection Drawing	NA	Outline Drawing	7108016734_S001

This is an uncontrolled document once printed or downloaded and is subject to change without notice. Date Created:06/11/2020

NOTES

1. THRU AIR SPACING BETWEEN WIRE AND METAL .063 MIN.
2. THE BOLT TORQUE TOLERANCE 7 - 10 IN. LBS.
3. ROTOR FREQUENCY TO BE WITHIN 3/4 OZ. IN.
4. FOR WASHER SET-UP, SEE CHART C800 0279, DETAIL "H".
5. MAXIMUM 0.1 Ω RESISTANCE BETWEEN GROUND TERMINAL AND MOTOR FRAME
6. LOCATE TOP LABEL, 6120 6085, AT 0° AS SHOWN TO READ RIGHT FROM LEAD END OF MOTOR
7. SALES TO SPECIFY ON P. O. WHICH PACK TO USE.

Uncontrolled Copy

ECO	REV.	DATE	SPEC/CHECK
639602	34	05-04-09	GAE/GAE
624052	31	9-3-99	JAK/XXX
631340	32	6-17-03	JAK/RWS
638295	33	06-18-08	GAE/GAE

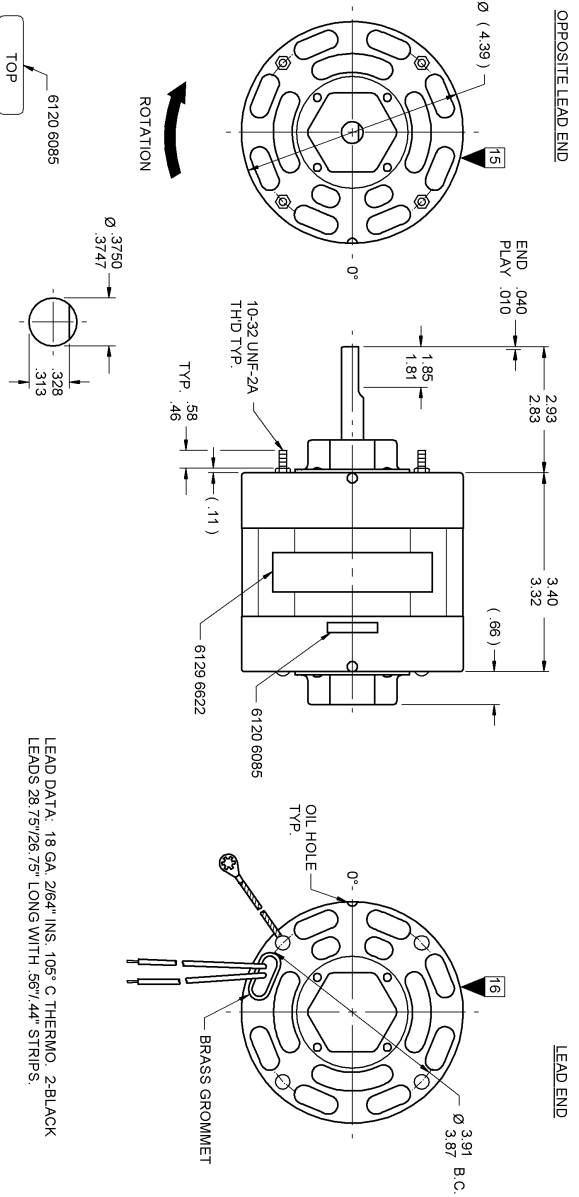
- 71xx xxxx,M
- A. SEE PACKAGING MANUAL PAGE 2 FOR PACKAGING PROCEDURE:
- 1 MOTOR/CARTON;
 - 40 MOTOR/SILAYER;
 - 6 LAYERS/PALLET;
 - 240 MOTOR/S/PALLET.
- B. SEE DRAWING 8785 6079 SH. 1 FOR PALLET LAYOUT.
- C. CENTER LABEL, 6119 0823, ON END OF CARTON.
- D. PLACE PAMPHLET, 6122 4579, IN CARTON WITH MOTOR.

71xx xxxxC

PRODUCTION TEST AT IDLE		PERFORMANCE TEST						IDLE		LOADED		LOCKED		BREAK	
AMP	WATT	RPM	AMP	WATT	OZ/IN	RPM	AMP	WATT	OZ/IN	AMP	WATT	OZ/IN	WATT	OZ/IN	
115 VOLTS 60 HZ															
2.55	159.0	1768	2.6	133	79	1500	3.3	296	26	4.7	303				

HI-POT TEST 2000 VOLTS
 MAX LEAKAGE CURRENT 5 mA
 MOTORS MUST START WITH 90 VOLTS APPLIED TO LOWEST SPEED.

7108 0167 MA



LEAD DATA: 18 GA. 2/64" INS. 105° C THERMO. 2-BLACK
 LEADS 28.75"/26.75" LONG WITH 567/44" STRIPS.
 GROUND DATA: 18 GA. 2/64" INS. 105° C THERMO. GRN/YEL
 7.00"/6.00" LONG WITH A # 10 SERRATED RING TERMINAL.

SPECIAL INSTRUCTIONS: SHAFT IS BONDERIZED. PAMPHLET PACKED WITH MOTOR.

7108 0167 = MADE IN U.S.A.
 7108 0167M = ASSEMBLED IN MEXICO

FASCO INDUSTRIES, INC.
 MOTOR DIVISION

SAFETY
 WARNING

V. 115 HZ 60 PH 1 ROT
 HP 1/10 AMP 3.5 RPM 1500
 TYPE US AO NO. 7108-0167
 DATE/BAR CODE AREA PER 8882 6003
 THERMALLY PROTECTED 038

MODEL D174

LOCATE C OF NAMEPLATE ON C OF STATOR TO READ RIGHT FROM
 LEAD END OF MOTOR CENTER AT 0°.
 SIZE 3.50 X 1.00

MOTORS PACKED MAX PER SKID: 240 CARTON PACK

CUSTOMER: FASCO DISTRIBUTING CO.

PART NUMBER: D174

APPLICATION: DIST. SALES

FINISH COLOR: GRAY

MOTOR WEIGHT: LBS.

ENVIRONMENT: DRY

INSULATION CLASS: A

REGISTRATION: DO NOT BORROW OR DISCLOSE TO THIRD PARTIES WITHOUT
 WRITTEN PERMISSION OF FASCO IND. INC., ELDON MO.

FASCO INDUSTRIES, INC.

MOTOR DIVISION

ELDON PLANT

MOTOR TYPE: SHADED POLE

FINISH COLOR: GRAY

MOTOR WEIGHT: LBS.

ENVIRONMENT: DRY

INSULATION CLASS: A

MOTOR NUMBER: REV.

7108 0167

34