

PRODUCT INFORMATION PACKET

FASCO®

Model No: D164

Catalog No: D164

1/6-1/8-1/10-1/2 HP Fan & Blower Motor, 1050 RPM, 4 Speed, 115 Volts, 42 Frame, OAO
Direct Drive Motors



Regal and Fasco are trademarks of Regal Beloit Corporation or one of its affiliated companies.
©2019 Regal Beloit Corporation, All Rights Reserved. MC017097E

REGAL



Nameplate Specifications

Output HP	1/6 - 1/8 - 1/10 - 1/2 Hp	Output KW	0.13 kW
Frequency	60 Hz	Voltage	115 V
Current	6.5/4.8/4.3/3.7 A	Speed	1050 rpm
Service Factor	1	Phase	1
Duty	Air Over	Insulation Class	A
Frame	42	Enclosure	Open Air Over
Thermal Protection	Thermally Protected	Ambient Temperature	40 °C
UL	Recognized	CSA	Y
CE	N		

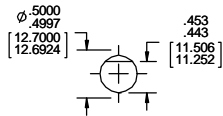
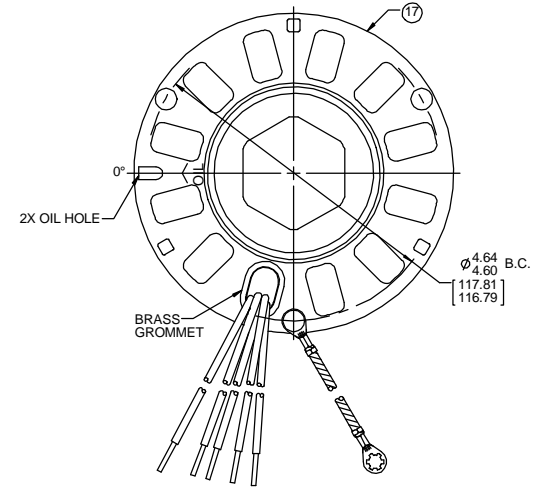
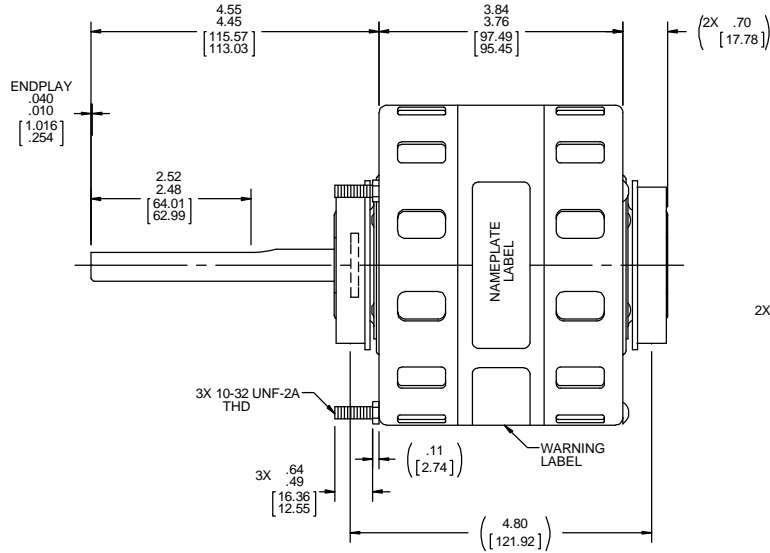
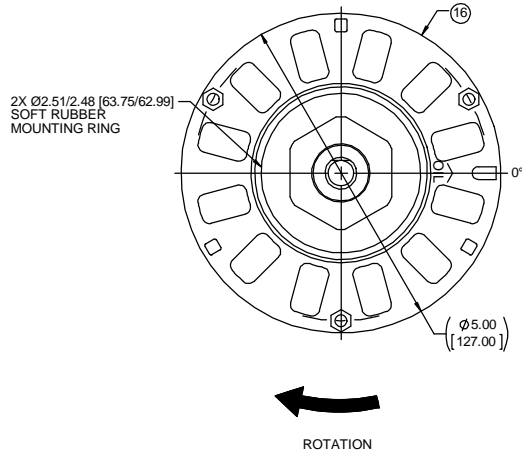
Technical Specifications

Electrical Type	Shaded Pole	Starting Method	Across The Line
Poles	6	Rotation	Clockwise Shaft End
Mounting	Extended Studs	Drive End Bearing	Sleeve
Opp Drive End Bearing	Sleeve	Frame Material	Na
Shaft Type	Flat	Overall Length	9.09 in
Shaft Diameter	0.500 in	Shaft Extension	4.50 in

This is an uncontrolled document once printed or downloaded and is subject to change without notice. Date Created:29/10/2019

OPPOSITE LEAD END

LEAD END



LEAD MATERIAL
18 GA. 105°C 2/64 INSUL. THERMO. WHITE, BLACK, BLUE, ORANGE, AND RED
28.50/26.50 [723.90/673.10]
.56/.44 [14.22/11.18] STRIP GRN/YEL GROUND LEAD
7.00/6.00 [177.80/152.40] W/ RING TERMINAL
AMP 350436-2

61305568

NOTES:

- SHAFT IS BONDERIZED.
- THRU AIR SPACING BETWEEN WIRE AND METAL .10 [2.54] MIN.
- TIE BOLT TORQUE TOLERANCE 10-15 IN.LBS.
- FOR WASHER SET-UP, SEE CHART C6000279, DETAIL "H".
- SEE PACKAGING MANUAL PAGE 2 FOR PACKAGING PROCEDURES.
- PACK 1 PER CONTAINER, 32 CONTAINERS PER LAYER, 6 LAYERS PER PALLET, 192 MAX. PER PALLET.
- SEE DRAWING 87856079 SHEET 1 FOR PALLET LAYOUT.
- PLACE PAMPHLET, 61224579, IN CONTAINER WITH MOTOR.
- CENTER LABEL, 61229128, ON END OF CARTON.
- CARTON LABELS MUST ALL FACE ONE DIRECTION TOWARD OPEN END OF PALLET, PER 88834408.
- NO PACKING TAPE OVER CARTON LABEL.

SAFETY WARNING
This motor must be grounded in accordance with local or national electrical codes to prevent possible injury due to electrical shock



AVERTISSEMENT DE SÉCURITÉ
Ce moteur doit être fondée sur conformément à la réglementation locale ou nationale électrique codes pour prévenir d'éventuelles blessures en raison de choc électrique

00464072

00464640



Fasco Industries, Inc.
Motor Division



Assembled In Mexico

No. 71510190 TYPE U51
115 V 60 Hz

AO LR6319
RH1

Model D164

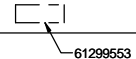
Thermally Protected
1/6-1/8-1/10-1/12 HP

1050 RPM

(4 SPD)

Connection Diagram
Wht Common
Blk High
Blu Med-High
Orn Med-Low
Red Low

6.54-8.43-3.7 A



CUSTOMER:	FASCO DIST	APPLICATION:	DIST. SALES	HI-POT TEST 2000 VOLTS MAX LEAKAGE CURRENT 5 mA								
CUSTOMER PN:	D164	MOTOR WEIGHT:	DRY									
		ENVIRONMENT:	CLASS A									
		INSULATION:	CLASS A									
		MOTOR TYPE	REFERENCE SAMPLE									
		SHADED POLE										
	B	LA	FR	A	S	C	E	B	A			
	00	51	11	V	06	AZ	8	8	0			
TYPICAL PERFORMANCE AT 115 VOLTS 60 HZ 1 PH 1/6 HP												
	IDLE				LOADED				LOCKED		BREAK	
MOTOR SPEED	RPM	AMP	WATT	IN OZ	RPM	AMP	WATT	IN OZ	AMP	WATT	IN OZ	
HIGH	1178	5.5	302	180	1050	6.2	433	74	8.6	573	226	
MED-HI	1178	4.0	218	141	1050	4.6	322	56	6.2	400	163	
MED-LO	1178	3.6	196	128	1050	4.1	286	51	5.6	359	149	
LOW	1178	3.0	166	111	1050	3.5	243	45	4.7	301	128	

PRODUCTION TEST AT IDLE 115 VOLTS 60 Hz		MOTOR SPEED
AMP	WATT	HIGH
6.05 - 4.95	332.2 - 271.8	MED-HI
4.40 - 3.60	239.9 - 196.2	MED-LO
3.96 - 3.24	215.6 - 176.4	LOW
3.30 - 2.70	182.6 - 149.4	

DRAWING REVISION	REVISION BY	DATE
AA	SDM	9/13/2017
ECO-0130797	APPROVED BY	DATE
	PLA	9/13/2017
CORRECT LEAD NOTE		
COPYRIGHT REGAL BELTO AMERICA, INC. ALL RIGHTS RESERVED. PROPRIETARY AND CONFIDENTIAL INFORMATION. THIS DOCUMENT IS THE PROPERTY OF REGAL BELTO AMERICA, INC. FORMERLY AND CONTAINING OWNERS PROPRIETARY INFORMATION. ANY PERSON, CORPORATION OR OTHER FIRM RECEIVING IT IS DEEMED BY RECEIVING IT, TO AGREE THAT IT, AND/OR ANY PART OF IT, SHALL NOT BE DISCLOSED TO ANY PERSON, CORPORATION OR OTHER ENTITY, DUPLICATED, AND/OR USED, EXCEPT AS EXPRESSLY APPROVED IN ADVANCE BY OWNER. THIS DOCUMENT SHALL BE RETURNED TO OWNER UPON REQUEST. IT MAY BE SUBJECT TO CERTAIN RESTRICTIONS UNDER APPLICABLE EXPORT CONTROL LAWS AND REGULATIONS.		

TOLERANCES UNLESS OTHERWISE SPECIFIED:	DEC.	INCH	mm	ANGLE
.X	±0.1	[Ø2.5]	±1°	
.XX	±0.01	[Ø0.25]		
.XXX	±0.005	[Ø0.127]		
.XXXX	±0.0005	[±0.0127]		
REMOVE BURRS & BREAK SHARP EDGES: .003/.015 [Ø76/.381] X 45° CORNER FILLETS: R.02 [.51] MACHINED SURFACES: .125 / 32 INCH / mm SHOWN IN (BRACKETS)				

DRAWN BY	SDM
DATE	9/13/2017
APPROVED BY	PLA
DATE	9/13/2017

REGAL™ Regal Beloit America, Inc.	
DESCRIPTION	OUTLINE MOTOR ASSY
MATERIAL	PROCESS/FINISH GRAY
THIRD ANGLE PROJECTION	SIZE C DRAWING NUMBER 71510190 SHEET 1 OF 1