

PRODUCT INFORMATION PACKET

FASCO®

Model No: D148
Catalog No: D148
1/10 HP Ventilation Motor, 1050 RPM, 115 Volts, 42 Frame, OAO
Ventilation Motors



Regal and Fasco are trademarks of Regal Beloit Corporation or one of its affiliated companies.
©2020 Regal Beloit Corporation, All Rights Reserved. MC017097E

REGAL



Nameplate Specifications

| | | | |
|--------------------|---------------------|---------------------|---------------|
| Output HP | 1/10 Hp | Output KW | 0.07 kW |
| Frequency | 60 Hz | Voltage | 115 V |
| Current | 3.6 A | Speed | 1050 rpm |
| Service Factor | 1 | Phase | 1 |
| Duty | Air Over | Insulation Class | A |
| Frame | 42 | Enclosure | Open Air Over |
| Thermal Protection | Thermally Protected | Ambient Temperature | 40 °C |
| UL | Recognized | CSA | Y |
| CE | N | | |

Technical Specifications

| | | | |
|-----------------------|----------------|-------------------|---------------------|
| Electrical Type | Shaded Pole | Starting Method | Across The Line |
| Poles | 6 | Rotation | Clockwise Shaft End |
| Mounting | Extended Studs | Drive End Bearing | Sleeve |
| Opp Drive End Bearing | Sleeve | Frame Material | Na |
| Shaft Type | Flat | Overall Length | 6.85 in |
| Shaft Diameter | 0.375 in | Shaft Extension | 3.50 in |
| Connection Drawing | NA | Outline Drawing | 7151258235_S001 |

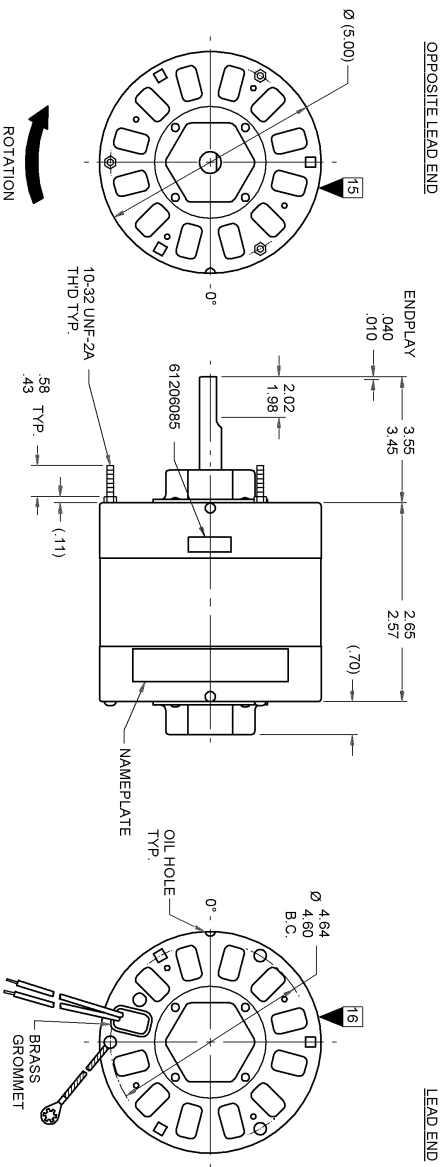
This is an uncontrolled document once printed or downloaded and is subject to change without notice. Date Created:06/11/2020

- NOTES
1. THRU AIR SPACING BETWEEN WIRE AND METAL 0.10 MIN.
 2. THE BOLT TORQUE TOLERANCE 7 - 12 IN. LBS.
 3. FOR WASHER SET-UP, SEE CHART C6000279, DETAIL "H"
 4. LOCATE TOP LABEL, 61206085, ON OPPOSITE LEAD END COVER AT 0° TO READ RIGHT FROM LEAD END OF MOTOR.

| ECO | REV. | DATE | SPEC/CHECK |
|---------|------|-----------|------------|
| 632800 | 32 | 4-05-04 | GAE/RWS |
| 638090 | 33 | 4-17-08 | LDO/LDC |
| 639407 | 34 | 04-07-09 | GAE/GAE |
| 4010033 | 35 | 8/14/2013 | KSA/GDM |

- 71xx xxxx,M
- A. SEE PACKAGING MANUAL PAGE 2 FOR PACKAGING PROCEDURE.
 - 1 MOTOR/CARTON;
 - 32 MOTOR/S/LAYER;
 - 6 LAYERS/PALLET;
 - 192 MOTOR/S/PALLET.
- 71xx xxxxC
- A. SEE DRAWING 87886079 SH. 1 FOR PALLET LAYER.
 - B. SEE DRAWING 87886079 SH. 1 FOR PALLET LAYER.
 - C. PLACE PAMPHLET, 61224579, IN CARTON WITH MOTOR.

| PRODUCTION TEST AT IDLE | | MOTOR SPEED | | PERFORMANCE TEST | | LOADED | | LOCKED | | BREAK | | |
|--------------------------|---------------|-------------|------|------------------|-------|--------|-----|--------|-----|-------|-------|-----|
| AMP | WATT | RPM | AMP | WATT | OZ/IN | RPM | AMP | WATT | AMP | WATT | OZ/IN | |
| 3.30 — 2.70 | 177.1 — 144.9 | HIGH | 1177 | 3.0 | 95 | 1050 | 3.4 | 234 | 38 | 4.6 | 292 | 112 |
| HI-POT TEST 2000 VOLTS | | | | | | | | | | | | |
| MAX LEAKAGE CURRENT 5 MA | | | | | | | | | | | | |



LEAD DATA: 18 GA. 2/64 INSUL. 105° C THERMO. 2 BLACK LINE
LEADS 29.00/27.00 IN. LONG WITH .56/ .44 IN. STRIPS.

LEAD DATA: 18 GA. 2/64 INSUL. 105° C THERMO. GRN/VEL
7.00/6.00 IN. LONG WITH A #10 SERRATED RING TERMINAL B9020157
AMP 350436-2.

61206085
TOP

00464072

00464282

FASCO Fasco Industries, Inc.
Motor Division

Model D188
No. 71512582
115 V
60 Hz
3.6 A
Max. Amb. 40°C
Temp. Protected 035

SAFETY WARNING
The Motor Must Be
Accorded With Local
Or National Electrical
Codes To Prevent
Personal Injury or
Electrical Shock

SPECIAL INSTRUCTIONS: SHAFT IS BONDZERIZED. PAMPHLET PACKED WITH MOTOR.

MOTORS PACKED MAX. PER SKID. PALLET PACK 192 CARTON PACK

CUSTOMER: FASCO DISTRIBUTING CO.

PART NUMBER: D148

APPLICATION: COUNTER SALES

FINISH COLOR: GRAY

MOTOR WEIGHT: LBS.

INSULATION CLASS: A

0 0288 698

| MOTOR TYPE | SHADED POLE | MOTOR NUMBER | REV. |
|------------|-------------------|--------------|------|
| B | LA FR A S C E B A | 7151 2582 | 35 |