

PRODUCT INFORMATION PACKET

FASCO®

Model No: D143
Catalog No: D143
1/30-1/40 HP Ventilation Motor, 1050 RPM, 2 Speed, 115 Volts, 42 Frame, OAO
Ventilation Motors



Regal and Fasco are trademarks of Regal Beloit Corporation or one of its affiliated companies.
©2019 Regal Beloit Corporation, All Rights Reserved. MC017097E

REGAL



Nameplate Specifications

Output HP	1/30-1/40 Hp	Output KW	0.02 kW
Frequency	60 Hz	Voltage	115 V
Current	1.5/1.0 A	Speed	1050 rpm
Service Factor	1	Phase	1
Duty	Air Over	Insulation Class	B
Frame	42	Enclosure	Open Air Over
Thermal Protection	Thermally Protected	Ambient Temperature	40 °C
UL	Recognized	CSA	Y
CE	N		

Technical Specifications

Electrical Type	Shaded Pole	Starting Method	Across The Line
Poles	6	Rotation	Counterclockwise Shaft End
Mounting	Extended Studs	Drive End Bearing	Sleeve
Opp Drive End Bearing	Sleeve	Frame Material	Na
Shaft Type	Flat	Overall Length	4.52 in
Shaft Diameter	0.500 in	Shaft Extension	1.66 in

This is an uncontrolled document once printed or downloaded and is subject to change without notice. Date Created:29/10/2019

ECO	REV.	DATE	SPEC/CHECK
631741	32	9-11-03	JAK/RWS
634007	33	12-7-04	JAK/RWS
639190	34	03-11-09	GA/E/AAE

- NOTES:
- THRU AIR SPACING BETWEEN WIRE AND METAL 10 MIN.
 - THE BOLT TORQUE TOLERANCE 10 - 15 IN. LBS.
 - FOR WASHER SET-UP, SEE CHART C600 0279, DETAIL "H".
 - ROTOR FREEMESS TO BE WITHIN 1 OZ. IN. TORQUE
 - ASSEMBLE SPACER 8867 0172, BETWEEN LEAD END COVER AND NUT ON EACH THE BOLT. GROUND TO BE ASSEMBLED BETWEEN SPACER AND COVER ON THE BOLT AT 90° CWLE.
 - SALES TO SPECIFY ON P.O. WHICH PACK TO USE.

A. SEE PACKAGING MANUAL PAGE 2 FOR PACKAGING PROCEDURES.

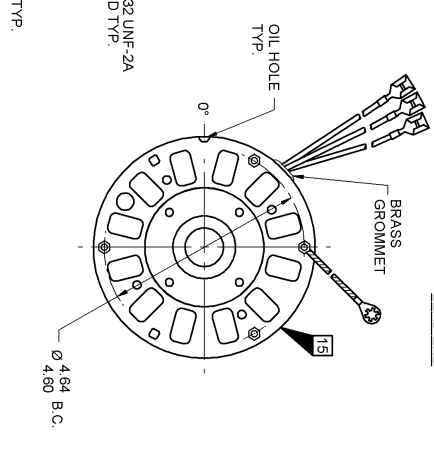
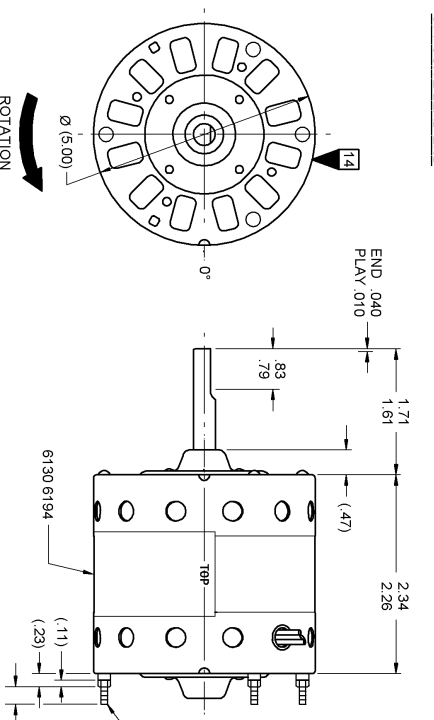
- 1 MOTOR/CARTON:
32 MOTOR/S/LAYER:
6 LAYER/S/PALLET:
192 MOTOR/S/PALLET:
B. SEE DRAWING 8785 6079 SH. 1 FOR PALLET LAYOUT.
C. CENTER LABEL, 6119 0848, ON END OF CARTON.
D. PLACE PAMPHLET, 6122 4579 IN CARTON WITH MOTOR.

71xx xxxxC	71xx xxxx,M
------------	-------------

PRODUCTION TEST AT IDLE 113 VOLTS 60 HZ		PERFORMANCE TEST 115 VOLTS 60 HZ 1 PH 1/30 HP						BROAK				
AMP	WATT	IDLE		LOADED		LOCKED		WATT	OZ/IN			
		RPM	AMP	WATT	AMP	WATT	AMP	WATT	OZ/IN			
1.43	1.17	86.8	1.3	78	31	1050	1.4	97	17	1.8	123	40
.99	.81	57.2	9	52	20	1050	.9	64	13	1.2	81	28

HI-POT TEST 2000 VOLTS
MAX LEAKAGE CURRENT 5 mA

7151 0175 MA



OPPOSITE LEAD END

LEAD END

LEAD DATA: 18 GA, 2/64" INS, 105° C THERMO, BLACK AND RED LEADS WITH 3/16" IN-LINE O.C TERMINALS, WHITE LEAD WITH 1/4" IN-LINE O.C. TERMINAL. ALL LEADS 12.00"/10.00" LONG.
GROUND SAT/A: 18 GA, 2/64" 105° C THERMO, GRN/YEL 7.00"/6.00" LONG WITH A # 10 SERRATED RING TERMINAL.

7151 0175 = MADE IN U.S.A.
7151 0175M = ASSEMBLED IN MEXICO

SPECIAL INSTRUCTIONS: SHAFT IS BONDZERED. PAMPHLET PACKED WITH MOTOR.

MOTORS PACKED MAX. PER SKID: PALLET PACK, 192 CARTON PACK

CUSTOMER: FASCO DISTRIBUTING CO.
PART NUMBER: D1/43APPLICATION: DIST. SALES

PROHIBIT: DO NOT SHORTCUT OR DISCONNECT TO THIRD PARTIES WITHOUT WRITTEN PERMISSION OF FASCO IND. INC., ELDON MO.
FASCO INDUSTRIES, INC. MOTOR DIVISION
ELDON PLANT

FINISH COLOR: GRAY	MOTOR TYPE: SHADED POLE	MOTOR NUMBER: 7151 0175	REV: 34
MOTOR WEIGHT: LBS.	LA FR A S C E B A		
ENVIRONMENT: DRY	V O1 G8 6 7 0		
INSULATION CLASS: B	00 51 10		

FASCO MOTOR DIVISION
V-115 HZ 60 PI 1 ROT 1
HP 1/30-1/40 MOTOR 1050 (2 290)
AMP 1.5-1.0 TPE US1 7151-0175
DATE/BAR CODE AREA PER 8882 6003

6130 6194 M REV 9

CONNECTION DIAGRAM
BLACK HIGH WITH ELECTRICAL CONNECTIONAL PRESENT POSSIBLE INJURY DUE TO ELECTRICAL SHOCK
SAFETY WARNING
THERMALLY PROTECTED OSB

LOCATE E OF NAMEPLATE ON E OF STATOR AND CENTERING "TOP" AT 0°.
TO READ RIGHT FROM LEAD END OF MOTOR.
SIZE 4.00 X .75