

# PRODUCT INFORMATION PACKET

FASCO®

Model No: D133  
Catalog No: D133  
1/20 HP Fan & Blower Motor, 1500 RPM, 115 Volts, 3.3" Diameter, Semi Enclosed  
Self Cooled Motors



Regal and Fasco are trademarks of Regal Beloit Corporation or one of its affiliated companies.  
©2019 Regal Beloit Corporation, All Rights Reserved. MC017097E

REGAL



**Nameplate Specifications**

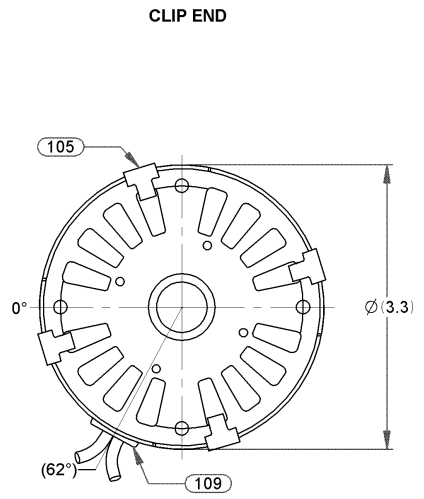
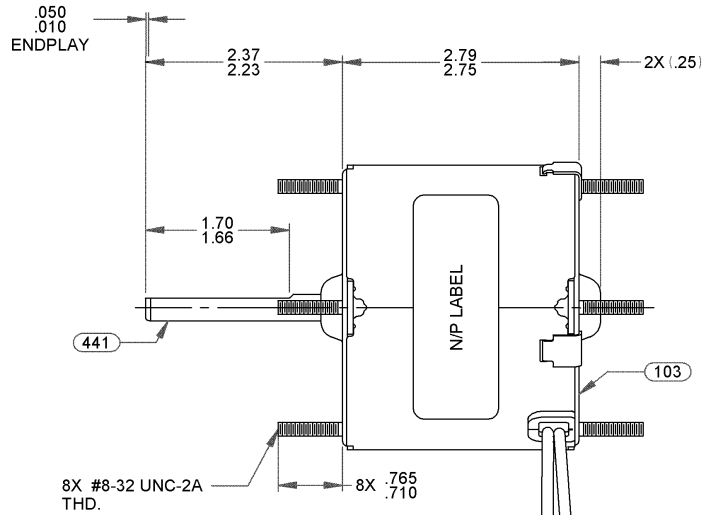
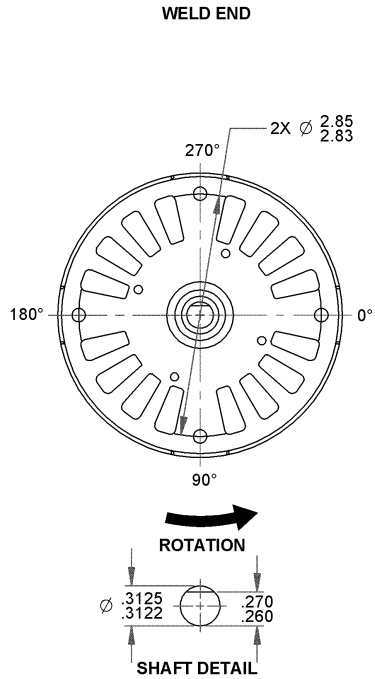
Output HP	1/20 Hp	Output KW	0.04 kW
Frequency	60 Hz	Voltage	115 V
Current	1.80 A	Speed	1500 rpm
Service Factor	1	Phase	1
Duty	Air Over	Insulation Class	B
Frame	3.3	Enclosure	Open Air Over
Thermal Protection	Thermally Protected	Ambient Temperature	40 °C
UL	Recognized	CSA	Y
CE	N		

**Technical Specifications**

Electrical Type	Shaded Pole	Starting Method	Across The Line
Poles	4	Rotation	Counterclockwise Shaft End
Mounting	Extended Studs	Drive End Bearing	Sleeve
Opp Drive End Bearing	Sleeve	Frame Material	Steel
Shaft Type	Flat	Overall Length	5.41 in
Frame Length	2.55 in	Shaft Diameter	0.313 in
Shaft Extension	2.30 in		

This is an uncontrolled document once printed or downloaded and is subject to change without notice. Date Created:29/10/2019

49	CHANGED LABEL LAYOUT	MLM 11/05/07	50	REMOVE BARCODE AND UPDATE NAMEPLATE	KSA11-03-09	51	ADDED CARTON LABEL NOTES	4002734 MLM 7/26/11	STANDARD TOLERANCES: ANGULAR +/- 1 DEGREE 2 PLACE DECIMAL +/- .01 3 PLACE DECIMAL +/- .005
----	----------------------	--------------	----	-------------------------------------	-------------	----	--------------------------	------------------------	---



LEAD MATERIAL  
18 GA. 125°C 2/64 INSUL.  
X-LINKED POLY, (2) BLACK,  
14.00/12.00 IN. LONG  
W/ .56/.44 IN. STRIP

- NOTES:  
1. MOTOR HAS 416 S.S. SHAFT.  
2. NO PACKAGING TAPE OVER CARTON LABEL.

0046-4072 0046-4282

**FASCO** Motor Division

Assembled in Mexico  
No. 71631606 TYPE U63B1 T.P. A0 LR6319  
115 V 60 Hz Class B  
1.8 A 1500 RPM 1/20 HP  
Model D133 Max. Amb: 40°C

**SAFETY WARNING**  
This Motor Must Be Grounded in Accordance With Local Or National Electrical Codes To Prevent Possible Injury Due To Electrical Shock

61299553

FRONT SHAFT POSITION		TYPICAL PERFORMANCE AT 115 VOLTS 60 Hz.											CUSTOMER: FASCO DIST.		<b>FASCO</b> FASCO MOTORS GROUP AC MOTOR/BLOWER DIVISION							
HORIZONTAL	MOTOR SPEED	IDLE			LOADED			LOCKED			BREAK	PART NUMBER: D133	CONFIDENTIAL; DO NOT DUPLICATE OR DISCLOSE TO THIRD PARTIES WITHOUT WRITTEN PERMISSION OF FASCO MOTORS GROUP, AC MOTOR/BLOWER DIVISION.									
		R.P.M.	AMP.	WATT	IN.OZ.	R.P.M.	AMP.	WATT	IN.OZ.	AMP.	WATT	IN.OZ.	APPLICATION: COUNTER SALES	MOTOR TYPE		DRAWING NUMBER						
		1760	1.49	83	34.2	1550	1.72	126	11.0	2.45	176	36.0	MOTOR WEIGHT: 3.16 LBS	SHADED POLE		7163 1606						
CUSTOMER APPROVAL:													ENVIRONMENT: DRY	REV. 51								
SIGNED:													FINISH COLOR: BLACK	B	LA	FR	A	S	C	E	B	A
DATE:													DRAWN BY: S. M. MAGGARD	00	63	30	V	05	FI	5	3	0
													DATE DRAWN: 8-13-2001									

If Printed, this is an Uncontrolled Document.