

PRODUCT INFORMATION PACKET

FASCO®

Model No: D1192
Catalog No: D1192
1/40 HP Draft Inducer Motor, 3000 RPM, 115 Volts, 3.3" Diameter, Semi Enclosed
Draft Inducer Motors



Regal and Fasco are trademarks of Regal Beloit Corporation or one of its affiliated companies.
©2019 Regal Beloit Corporation, All Rights Reserved. MC017097E

REGAL



Nameplate Specifications

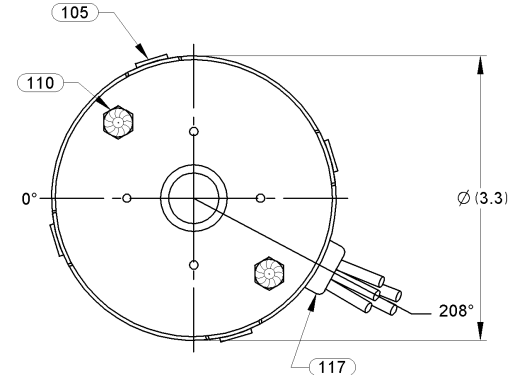
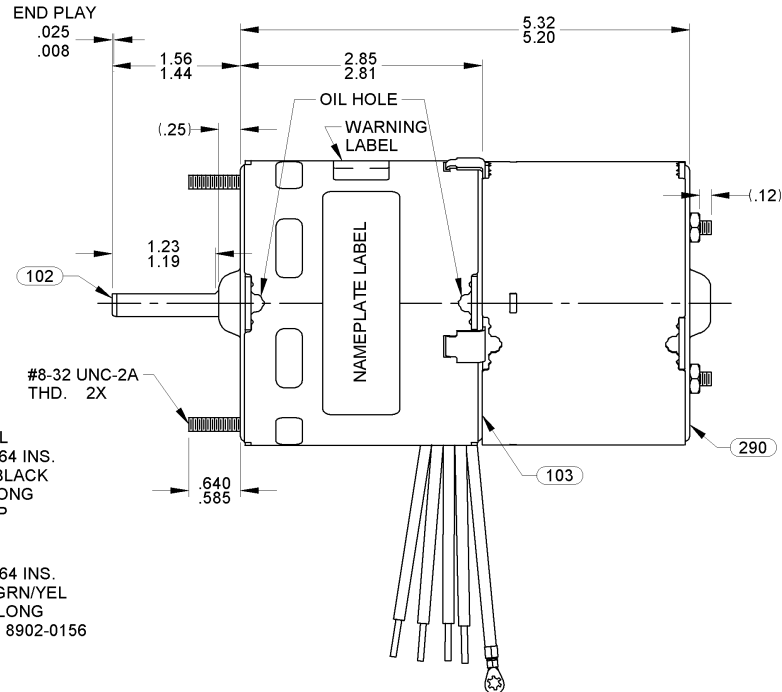
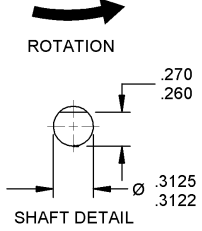
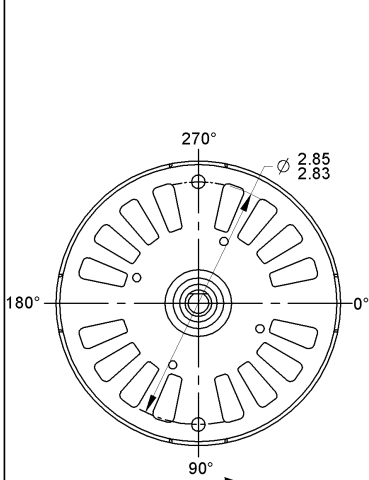
Output HP	1/40 Hp	Output KW	0.02 kW
Frequency	60 Hz	Voltage	115 V
Current	.70 A	Speed	3000 rpm
Service Factor	1	Phase	1
Duty	Air Over	Insulation Class	B
Frame	3.3	Enclosure	Open Air Over
Thermal Protection	Thermally Protected	Ambient Temperature	40 °C
UL	Recognized	CSA	Y
CE	N		

Technical Specifications

Electrical Type	Shaded Pole	Starting Method	Across The Line
Poles	2	Rotation	Counterclockwise Shaft End
Mounting	Extended Studs	Drive End Bearing	Sleeve
Opp Drive End Bearing	Sleeve	Frame Material	Steel
Shaft Type	Flat	Overall Length	6.88 in
Frame Length	2.62 in	Shaft Diameter	0.313 in
Shaft Extension	1.50 in		

This is an uncontrolled document once printed or downloaded and is subject to change without notice. Date Created:29/10/2019

04	ADDED SH 2 TO MOTOR	10/14/2005	05	CHANGE NAMEPLATE TO 0046-4072, MOVE NOTES TO SHEET 2, CHANGE GROUND NOTE.	SDM 02/07/08	06	REMOVE BAR CODE FROM NAMEPLATE.	SDM 07/29/10	STANDARD TOLERANCES: ANGULAR +/- 1 DEGREE 2 PLACE DECIMAL +/- .01 3 PLACE DECIMAL +/- .005
----	---------------------	------------	----	---	--------------	----	---------------------------------	--------------	---



LEAD MATERIAL
18 GA. 125°C 2/64 INS.
X-LINK POLY., BLACK
10.00/8.00 IN. LONG
.56/.44 IN. STRIP

GROUND LEAD
18 GA. 125°C 2/64 INS.
X-LINK POLY., GRN/YEL
13.00/11.00 IN. LONG
W/ RING TERM. 8902-0156
AMP# 61794-1

SWITCH LEADS
18 GA. 125°C 2/64 INS.
X-LINK POLY., RED
10.00/8.00 IN. LONG
.56/.44 IN. STRIP

NOTES:
1. NO PACKAGING TAPE OVER CARTON LABEL.

6129-4832
SAFETY WARNING
This Motor Must Be Grounded
In Accordance With Local Or
National Electrical Codes
To Prevent Possible Injury
Due To Electrical Shock

0046-4072 0046-9183

FASCO Fasco Industries, Inc
Motor Division

Assembled In Mexico No. 71219712 TYPE U21B T.P. AO
115 V 60 Hz Class B
70 A 3000 RPM
Model D1192 Switch 125VA-120V SW280-1

1/40 HP Max Amb:40°C LR36496

Connection Diagram
Blk — Line
Blk — Line
Red — Line
Red — Grd
Grn/Yel — Grd

FRONT SHAFT POSITION		TYPICAL PERFORMANCE AT 115 VOLTS 60 Hz											CUSTOMER:		FASCO MOTORS GROUP AC MOTOR/BLOWER DIVISION									
HORIZONTAL	MOTOR SPEED	IDLE			LOADED			LOCKED			BREAK	PART NUMBER:	APPLICATION:	MOTOR TYPE					DRAWING NUMBER					
		R.P.M.	AMP.	WATT	IN.OZ.	R.P.M.	AMP.	WATT	IN.OZ.	AMP.	WATT	IN.OZ.	DRAFT INDUCER	SHADED POLE					7121 9712					
		3470	.74	49	8.16	3000	.94	74	3.30	1.21	91	8.75	D1192	DRAFT INDUCER										
													MOTOR WEIGHT:	2.75										
													ENVIRONMENT:	DRY										
													FINISH COLOR:	BLACK										
													DRAWN BY:	JMH	B	LA	FR	A	S	C	E	B	A	REV.
													DATE DRAWN:	10/14/2005	00	21	34	V	02	OF	5	3	0	06