

PRODUCT INFORMATION PACKET

FASCO®

Model No: D1184
Catalog No: D1184
1/16 HP Draft Inducer Motor, 3450 RPM, 460 Volts, 3.3" Diameter, Semi Enclosed
Draft Inducer Motors



Regal and Fasco are trademarks of Regal Beloit Corporation or one of its affiliated companies.
©2020 Regal Beloit Corporation, All Rights Reserved. MC017097E

REGAL



Nameplate Specifications

| | | | |
|--------------------|---------------------|---------------------|---------------|
| Output HP | 1/16 Hp | Output KW | 0.04 kW |
| Frequency | 60 Hz | Voltage | 460 V |
| Current | .3 A | Speed | 3450 rpm |
| Service Factor | 1 | Phase | 1 |
| Duty | Air Over | Insulation Class | B |
| Frame | 3.3 | Enclosure | Open Air Over |
| Thermal Protection | Thermally Protected | Ambient Temperature | 40 °C |
| UL | Recognized | CSA | Y |
| CE | N | | |

Technical Specifications

| | | | |
|-----------------------|---------------------------|-------------------|----------------------------|
| Electrical Type | Permanent Split Capacitor | Starting Method | Across The Line |
| Poles | 2 | Rotation | Counterclockwise Shaft End |
| Mounting | Extended Studs | Drive End Bearing | Ball |
| Opp Drive End Bearing | Ball | Frame Material | Steel |
| Shaft Type | Double Flat | Overall Length | 8.10 in |
| Frame Length | 4.51 in | Shaft Diameter | 0.312 in |
| Shaft Extension | 3.35 in | | |
| Connection Drawing | 00469128 | Outline Drawing | 71624419 |

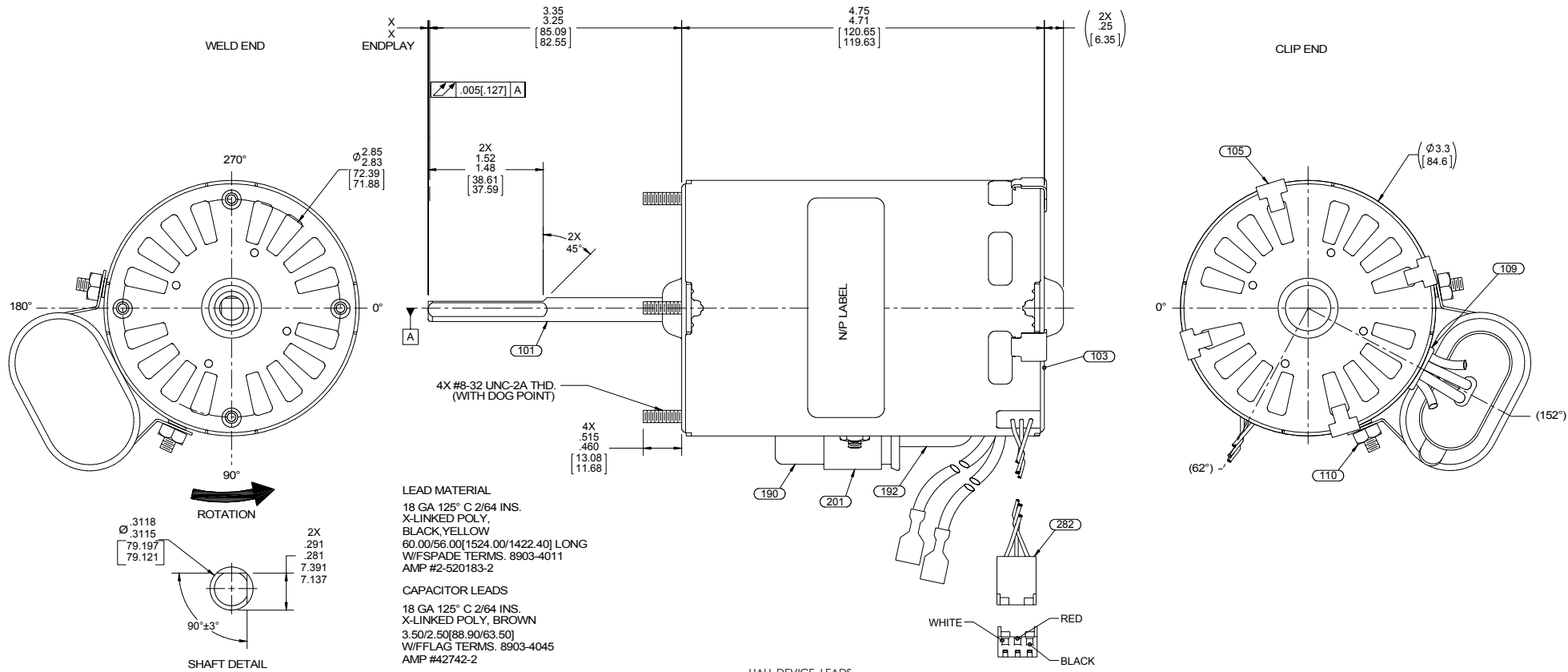
This is an uncontrolled document once printed or downloaded and is subject to change without notice. Date Created:22/09/2020

4

3

2

1



LEAD MATERIAL
 18 GA 125° C 2/64 INS.
 X-LINKED POLY,
 BLACK/YELLOW
 60.00/56.00[1524.00/1422.40] LONG
 W/FSPADE TERMS. 8903-4011
 AMP #2-520183-2

CAPACITOR LEADS
 18 GA 125° C 2/64 INS.
 X-LINKED POLY, BROWN
 3.50/2.50[88.90/63.50]
 W/FFLAG TERMS. 8903-4045
 AMP #42742-2

SENSOR LEADS
 22 GA 80° C MIN., 1/64 INS.
 PVC, WHITE, RED, BLACK
 43.00/41.00 [1092.20/1041.40] LONG
 W/MOLEX PIN TERMS. (08-50-0103)
 & MOLEX HSG. (09-50-8033)

HALL DEVICE LEADS
 Wht ——— Output
 Red ——— Input
 Blk ——— Return

6129 4176

6129 4176

WARNING

WHEN OPERATED ON 460 V. SPECIAL CARE SHOULD BE TAKEN WITH HANDLING CONNECTIONS AND GROUNDING TO AVOID SHOCK HAZARD.

AVERTISSEMENT DE SECURITE
 Ce moteur doit être fondée sur conformément à la réglementation locale ou national électrique codes pour prévenir d'éventuelles blessures en raison de choc électrique

This motor must be grounded in accordance with local or national electrical codes to prevent possible injury due to electrical shock

6130 5568

APPLY IN A CONVENIENT LOCATION TO READ FROM CLIP END

00464072

00469128

FASCO Fasco Industries, Inc
 Motor Division

Assembled In Mexico
 No. 71624419 TYPE U62B1 HV1 T.P. AO LR6319
 460 V 60 Hz Class B
 0.3 A 3450 RPM
 Model D1184

1/16 HP Sealed Ball Brg

4 MFD/370 VAC

Blk ——— line
 Blu ——— line
 Brn ———
 Brn ———

61299553

NOTES:
 PACK 108 MAX. MOTORS PER PALLET.
 NO PACKAGING TAPE OVER CARTON LABEL.

| | | | |
|-------------------|---|------------------------|-------------------------|
| CUSTOMER P.N.: | D1184 | ENVIRONMENT: | WET |
| CUSTOMER: | FASCO DIST. | APPLICATION: | ROOF TOP VENT |
| | | MOTOR WEIGHT: | 5.00 LBS. |
| CUSTOMER APPROVAL | FRONT SHAFT POSITION | | |
| SIGNED: | UP DOWN | MOTOR TYPE | REFERENCE SAMPLE NUMBER |
| DATE: | HORIZONTAL | P.S.C. | 71624419 |
| | | B LA FR A S C E B A | |
| | | 00 62 30 V 06 GV 5 0 0 | |
| MOTOR SPEED | TYPICAL PERFORMANCE AT 208-230 VOLTS 50/60 HZ | LOCKED | BREAK |
| | IDLE | FULL LOAD | |
| | RPM AMP WATT IN OZ | RPM AMP WATT IN OZ | IN OZ |
| | 3578 .14 61 26.0 | 3450 .24 107 17.8 | .73 314 55.1 |

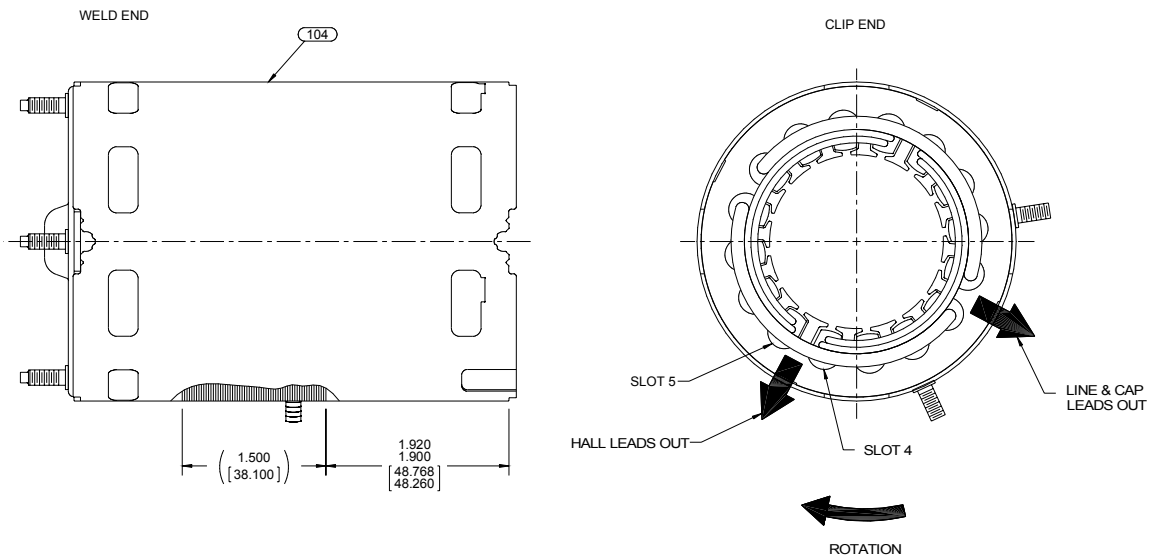
| | | | | |
|------------------|-------------|------------|---|------------------------|
| DRAWING REVISION | REVISION BY | DATE | TOLERANCES UNLESS OTHERWISE SPECIFIED: | DRAWN BY |
| R | Q ZHAO | 07-27-2015 | DEC. INCH mm ANGLE | TANNT, HIBES |
| ECO-0081097 | APPROVED BY | DATE | .X ±0.1 [±2.5] ±0.5° | 01-21-2003 |
| ECO DESCRIPTION | C. ZHANG | 07-27-2015 | .XX ±0.01 [±0.25] | APPROVED BY |
| | SEE ECO | | .XXX ±0.005 [±0.127] | DATE |
| | | | .XXXX ±0.0005 [±0.0127] | |
| | | | REMOVE BURRS & BREAK SHARP EDGES: .0031015 [0.781381] X 45° CORNER FILLETS: R.02 [51] | DESCRIPTION |
| | | | MACHINED SURFACES: .125 [3.2] INCH V mm √ | MODEL-SFHP-3.3 |
| | | | mm SHOWN IN [BRACKETS] | OUTLINE |
| | | | | MATERIAL |
| | | | | PROCESS/FINISH |
| | | | | BLACK |
| | | | | THIRD ANGLE PROJECTION |
| | | | | SIZE |
| | | | | DRAWING NUMBER |
| | | | | 71624419 |
| | | | | SHEET |
| | | | | 1 OF 2 |

4

3

2

1



NOTES:

1. STAKE STATOR TO SLEEVE PER P.S. 8883 0264.
2. MAXIMUM TORQUE REQUIRED TO TURN MOTOR SHAFT IS 3/8 INCH-OUNCE.
3. ASSEMBLE SPRING BETWEEN WASHER AND BEARING ON WELD END, WITH SPRING FINGERS TOWARDS BEARING.
4. ASSEMBLE BALL BEARINGS TO BEARING RETAINERS PER WORK CENTER PROCESS.
5. ADD A LINE OF LOCTITE 410 APPROXIMATELY .050[1.270] WIDE AROUND THE O.D. OF THE BEARING RETAINER A MAXIMUM OF .050[1.270] FROM THE END OPPOSITE THE BEARING RETAINER FLANGE FACE. TACHOMETER RING WILL WIPE ADHESIVE DOWN ON RETAINER AS IT IS INSTALLED. PUSH THE TACHOMETER RING INTO THE NOTCH ON THE BEARING RETAINER. WITH THE BEARING RETAINER UP, LET THE LOCTITE SET UP FOR 6 TO 8 HOURS MINIMUM. AFTER ALLOWING THE LOCTITE TO SET UP, THE TACHOMETER RING MUST WITHSTAND 20 LBS. MINIMUM RADIAL LOAD TEST AFTER ASSEMBLED TO BEARING RETAINER. REJECT ANY THAT DO NOT HOLD.
6. CUT BROWN LEADS TO LENGTH, STRIP TO .22 ± .06[5.59±1.52] AND ASSEMBLE TERMINALS.
7. LINE LEADS ARE TO BE HANKED.
8. ATTACHED TERMINALS MUST MEET SPECIFICATIONS ON P.S. 8883 4229.

PACKING SPECIFICATIONS

1. PACK PER P.S. 8883 4200. 1 PER CARTON, 18 PER LAYER, 108 MAX PER PALLET, 6 LAYERS PER PALLET.
2. PLACE FILLER TUBE OVER SHAFT EXTENSION, FOAM RING ON CLIP END, PLACE MOTOR IN CARTON, CLOSE FLAPS AND TAPE. PLACE CARTON LABEL ON SHAFT END OF CARTON.
3. CARTON LABELS MUST ALL FACE ONE DIRECTION TOWARD THE OPEN END OF THE PALLET. SEE P.S. 8883 4408.
4. PLACE (1) FLAT PAD ON PALLET, (1) BETWEEN EACH LAYER AND (1) ON TOP.
5. PLACE ALL INSPECTION STICKERS AND WRITING ON TOP FLAT PAD.

| | | | | |
|---|------------------------|--------------------|---|--|
| DRAWING REVISION R | REVISION BY G.ZHAO | DATE 07-27-2015 | TOLERANCES UNLESS OTHERWISE SPECIFIED: DEC. INCH mm ANGLE .XX ±0.1 [±2.5] ±0.5° .XXX ±0.01 [±0.25] .XXXX ±0.005 [±0.127] .XXXX ±0.0005 [±0.0127] | DRAWN BY TANNT.HIBES |
| ECO ECO-0081097 | APPROVED BY C.ZHANG | DATE 07-27-2015 | REMOVE BURRS & BREAK SHARP EDGES: .0031 [0.076381] X 45° CORNER FILLETS: R.02 [51] MACHINED SURFACES: .125 / 3.2 INCH V mm V mm SHOWN IN [BRACKETS] | DATE 01-21-2003 |
| SEE ECO | | | REFERENCE | APPROVED BY |
| COPYRIGHT REGAL BELOIT AMERICA, INC. ALL RIGHTS RESERVED. PROPRIETARY AND CONFIDENTIAL INFORMATION. THIS DOCUMENT IS THE PROPERTY OF REGAL BELOIT AMERICA, INC. FORMERLY AND CONTAINS OWNERS PROPRIETARY INFORMATION. ANY PERSON, CORPORATION OR OTHER FIRM RECEIVING IT IS DEEMED, BY RECEIVING IT, TO AGREE THAT IT, AND/OR ANY PART OF IT, SHALL NOT BE DISCLOSED TO ANY PERSON, CORPORATION OR OTHER ENTITY, DUPLICATED, AND/OR USED, EXCEPT AS EXPRESSLY APPROVED IN WRITING IN ADVANCE BY OWNER. THIS DOCUMENT SHALL BE RETURNED TO OWNER UPON REQUEST. IT MAY BE SUBJECT TO CERTAIN RESTRICTIONS UNDER APPLICABLE EXPORT CONTROL LAWS AND REGULATIONS. | | | MATERIAL | DATE |
| | | | THIRD ANGLE PROJECTION | DESCRIPTION MODEL-SFHP-3.3 OUTLINE |
| | | | SIZE C | PROCESS/FINISH BLACK |
| | | | DRAWING NUMBER 71624419 | SHEET 2 OF 2 |