

PRODUCT INFORMATION PACKET

FASCO®

Model No: D1182
Catalog No: D1182
1/16 HP OEM Replacement Motor, 3450 RPM, 208-230 Volts, 3.3" Diameter, OAO
HVAC/R OEM Replacement Motors



Regal and Fasco are trademarks of Regal Beloit Corporation or one of its affiliated companies.
©2020 Regal Beloit Corporation, All Rights Reserved. MC017097E

REGAL



Nameplate Specifications

Output HP	1/16 Hp	Output KW	0.04 kW
Frequency	60 Hz	Voltage	208-230 V
Current	.6 A	Speed	3450 rpm
Service Factor	1	Phase	1
Duty	Air Over	Insulation Class	B
Frame	3.3	Enclosure	Open Air Over
Thermal Protection	Thermally Protected	Ambient Temperature	40 °C
UL	Recognized	CSA	Y
CE	N		

Technical Specifications

Electrical Type	Permanent Split Capacitor	Starting Method	Across The Line
Poles	2	Rotation	Counterclockwise Shaft End
Mounting	Extended Studs	Drive End Bearing	Ball
Opp Drive End Bearing	Ball	Frame Material	Steel
Shaft Type	Double Flat	Overall Length	8.16 in
Frame Length	4.33 in	Shaft Diameter	0.312 in
Shaft Extension	3.35 in		
Outline Drawing	71624163	Connection Drawing	00469127

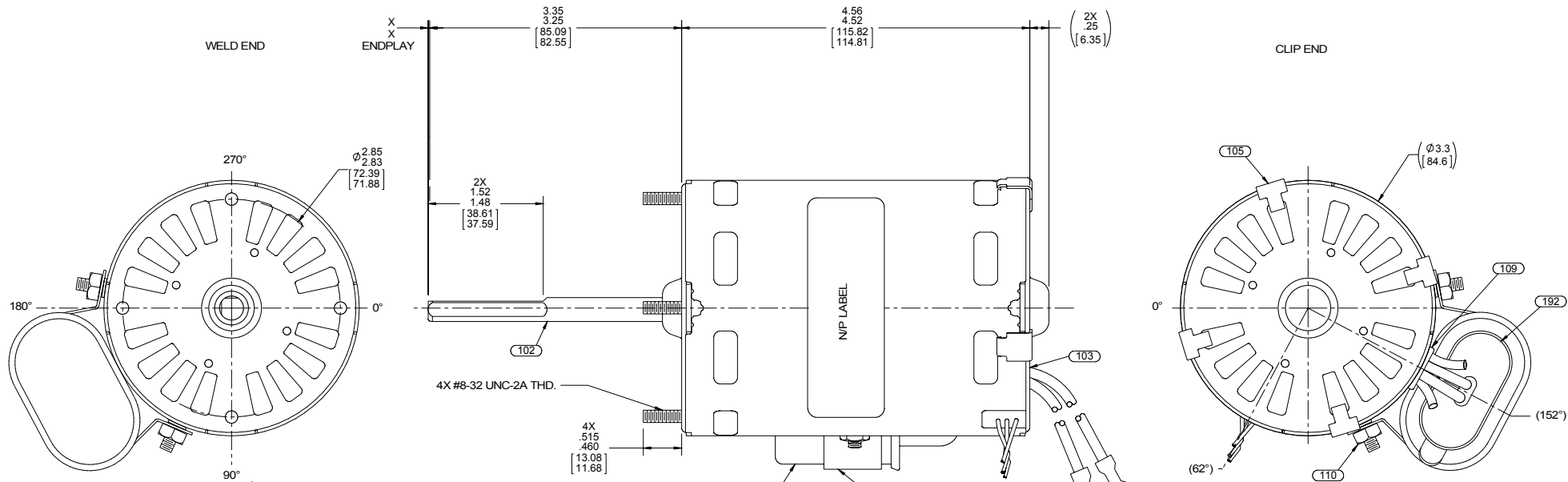
This is an uncontrolled document once printed or downloaded and is subject to change without notice. Date Created:22/09/2020

4

3

2

1



LEAD MATERIAL
18 GA. 125°C 2/64 INS.
X-LINKED POLY. (1) BLACK
AND (1) BLUE
54.00/50.00[1371.60/1270.00] LONG
W/ F. SPADE TERMS. 8903-4011
AMP 2-520183-2

CAPACITOR LEAD MATERIAL
18 GA. 125°C 2/64 INS.
X-LINKED POLY. (2) BROWN
3.50/2.50[88.90/63.50] LONG
W/ F. FLAG TERMS. 8903-4045

SENSOR LEAD MATERIAL
22 GA. 80°C 1/64 INS.
PVC. (1) WHITE, (1) RED,
AND (1) BLACK
43.00/41.00[1092.20/1041.40]. LONG
W/ PIN TERMS.
MOLEX 08-55-0103

HALL DEVICE LEADS
Wht ——— Output
Red ——— Input
Blk ——— Return

NOTES:
NO PACKAGING TAPE OVER CARTON LABEL.

6130 5568

SAFETY WARNING
This motor must be grounded in accordance with local or national electrical codes to prevent possible injury due to electrical shock

AVERTISSEMENT DE SECURITE
Ce moteur doit être fondée sur conformément à la réglementation locale ou national électrique codes pour prévenir d'éventuelles blessures en raison de choc électrique

00464072

00469127

FASCO Fasco Industries, Inc
Motor Division

Assembled In Mexico
No. 71624163 TYPE U62B1 T.P. AO LR6319 Connection Diagram
208-230 V 60 Hz Class B 1/16 HP
0.6 A 3450 RPM

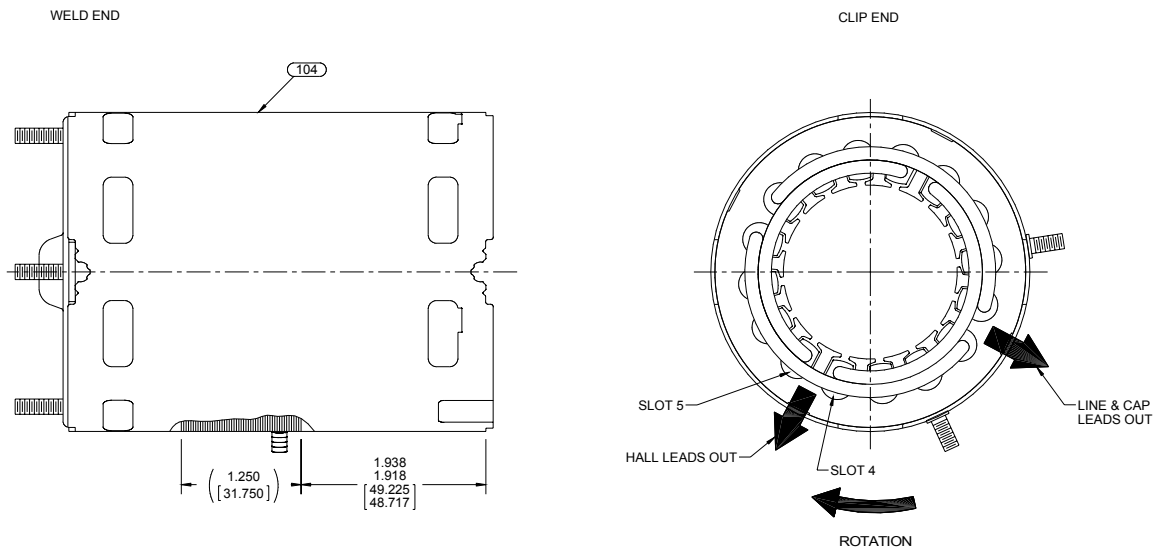
Model D1182
Sealed Ball Brg

4 MFD/370 VAC

CUSTOMER P/N	D1182	ENVIRONMENT:	WET
CUSTOMER:	FASCO DIST.	APPLICATION:	ROOF TOP VENT
		MOTOR WEIGHT:	4.35 LBS.
CUSTOMER APPROVAL	FRONT SHAFT POSITION		
SIGNED:	HORIZONTAL	UP	
		DOWN	
DATE:			
		MOTOR TYPE	
		P.S.C.	
		REFERENCE SAMPLE NUMBER	
		71624163	
		B	LA
		FR	A
		S	C
		E	B
		A	
		00	62
		30	V
		05	DG
		5	0
		0	0
APPLY IN A CONVENIENT LOCATION TO READ FROM CLIP END			

APPLY IN A CONVENIENT LOCATION TO READ FROM CLIP END

DRAWING REVISION	REVISION BY	DATE	TOLERANCES UNLESS OTHERWISE SPECIFIED:	DRAWN BY	DATE	DESCRIPTION
R	Q.ZHAO	07-23-2015	DEC. INCH mm ANGLE	RM	12-18-2001	Regal Beloit America, Inc.
ECO-0081097	APPROVED BY	DATE	.X ±0.1 [±2.5]			
ECO DESCRIPTION	C.ZHANG	07-23-2015	.XX ±0.01 [±0.25]			
	SEE ECO		.XXX ±0.005 [±0.127]			
			.XXXX ±0.0005 [±0.0127]			
			REMOVE BURRS & BREAK SHARP EDGES: .003/.015 [0.076/.381] X .45°			
			CORNER FILLETS: R.02 [51]			
			MACHINED SURFACES: .125 / 3/2 INCH V mm V			
			mm SHOWN IN [BRACKETS]			
				THIRD ANGLE PROJECTION		
				SIZE	DRAWING NUMBER	PROCESS/FINISH
				C	71624163	BLACK
						SHEET
						1 OF 2



NOTES:

1. STAKE STATOR TO SLEEVE PER P.S. 8883 0264.
2. MAXIMUM TORQUE REQUIRED TO TURN MOTOR SHAFT IS 3/8 INCH-OUNCE.
3. ASSEMBLE SPRING BETWEEN WASHER AND BEARING ON WELD END, WITH SPRING FINGERS TOWARDS BEARING.
4. ASSEMBLE BALL BEARINGS TO BEARING RETAINERS PER WORK CENTER PROCESS.
5. ADD A LINE OF LOCTITE 410 APPROXIMATELY .050[1.270] WIDE AROUND THE O.D. OF THE BEARING RETAINER A MAXIMUM OF .050[1.270] FROM THE END OPPOSITE THE BEARING RETAINER FLANGE FACE. TACHOMETER RING WILL WIPE ADHESIVE DOWN ON RETAINER AS IT IS INSTALLED. PUSH THE TACHOMETER RING INTO THE NOTCH ON THE BEARING RETAINER. WITH THE BEARING RETAINER UP, LET THE LOCTITE SET UP FOR 6 TO 8 HOURS MINIMUM. AFTER ALLOWING THE LOCTITE TO SET UP, THE TACHOMETER RING MUST WITHSTAND 20 LBS. MINIMUM RADIAL LOAD TEST AFTER ASSEMBLED TO BEARING RETAINER. REJECT ANY THAT DO NOT HOLD.
6. CUT BROWN LEADS TO LENGTH, STRIP TO .22 ± .06[5.59±1.52] AND ASSEMBLE TERMINALS.

PACKING SPECIFICATIONS

1. PACK PER P.S. 8883 4200. 1 PER CARTON, 18 PER LAYER, 108 PER PALLET, 6 LAYERS PER PALLET.
2. PLACE FOAM RING ON CLIP END OF MOTOR, PLACE FILLER TUBE OVER SHAFT EXTENSION. PLACE MOTOR IN CARTON, CLOSE FLAPS AND TAPE. PLACE CARTON LABEL ON SHAFT END OF CARTON.
3. PLACE (1) FLAT PAD ON PALLET, (1) BETWEEN EACH LAYER AND (1) ON TOP. PLACE CARTONS ON PALLET WITH LABELED END OUT AND VISIBLE FOR STORAGE. PLACE ALL INSPECTION STICKERS AND WRITING ON TOP FLAT PAD.
4. CARTON LABELS MUST ALL FACE ONE DIRECTION TOWARD THE OPEN END OF THE PALLET. SEE P.S. 8883 4408.

DRAWING REVISION R	REVISION BY G.ZHAO	DATE 07-23-2015	TOLERANCES UNLESS OTHERWISE SPECIFIED: DEC. INCH mm ANGLE .XX ±0.1 [±2.5] ±0.5° .XXX ±0.005 [±0.127] .XXXX ±0.0005 [±0.0127]	DRAWN BY RM	DATE 12-18-2001	REGAL Regal Beloit America, Inc.
ECO-0081097	APPROVED BY C.ZHANG	DATE 07-23-2015	REMOVE BURRS & BREAK SHARP EDGES: .0031 [0.076381] X 45° CORNER FILLETS: R.02 [51] MACHINED SURFACES: .125 / 3.2 INCH / mm V	APPROVED BY	DESCRIPTION MODEL-SFHP-3.3	
SEE ECO			THIRD ANGLE PROJECTION	DATE	MATERIAL	PROCESS/FINISH BLACK
COPYRIGHT REGAL BELOIT AMERICA, INC. ALL RIGHTS RESERVED. PROPRIETARY AND CONFIDENTIAL INFORMATION. THIS DOCUMENT IS THE PROPERTY OF REGAL BELOIT AMERICA, INC. (OWNERS) AND CONTAINS OWNERS PROPRIETARY INFORMATION. ANY PERSON, CORPORATION OR OTHER FIRM RECEIVING IT IS DEEMED, BY RECEIVING IT, TO AGREE THAT IT, AND/OR ANY PART OF IT, SHALL NOT BE DISCLOSED TO ANY PERSON, CORPORATION OR OTHER ENTITY, DUPLICATED, AND/OR USED, EXCEPT AS EXPRESSLY APPROVED IN WRITING IN ADVANCE BY OWNERS. THIS DOCUMENT SHALL BE RETURNED TO OWNER UPON REQUEST. IT MAY BE SUBJECT TO CERTAIN RESTRICTIONS UNDER APPLICABLE EXPORT CONTROL LAWS AND REGULATIONS.			REFERENCE	DRAWING NUMBER 71624163	SHEET 2 OF 2	