

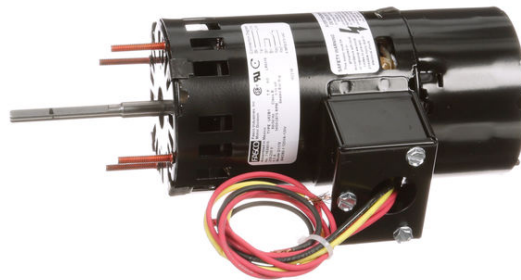
PRODUCT INFORMATION PACKET

FASCO®

Model No: D1178

Catalog No: D1178

1/15 HP OEM Replacement Motor, 3450/2875 RPM, 208-230 Volts, 3.3" Diameter, Semi Enclosed
HVAC/R OEM Replacement Motors



Regal and Fasco are trademarks of Regal Beloit Corporation or one of its affiliated companies.
©2020 Regal Beloit Corporation, All Rights Reserved. MC017097E

REGAL



Nameplate Specifications

Output HP	1/15 Hp	Output KW	0.05 kW
Frequency	60 Hz	Voltage	208-230 V
Current	.5 A	Speed	3450/2875 rpm
Service Factor	1	Phase	1
Duty	Air Over	Insulation Class	B
Frame	3.3	Enclosure	Open Air Over
Thermal Protection	Thermally Protected	Ambient Temperature	40 °C
UL	Recognized	CSA	Y
CE	N		

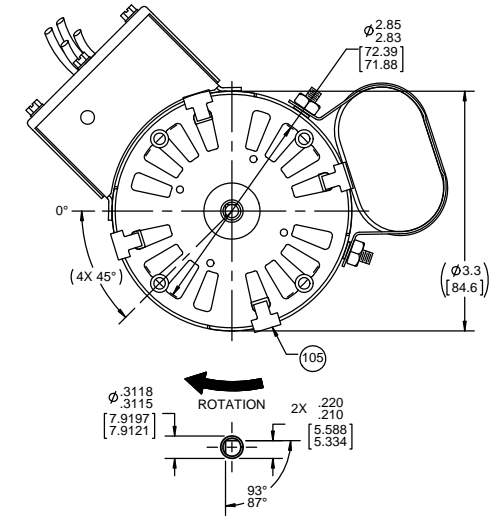
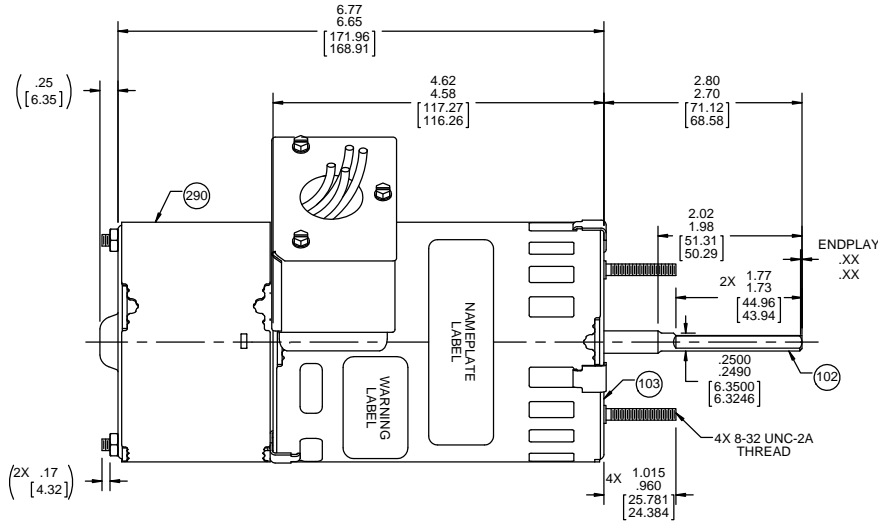
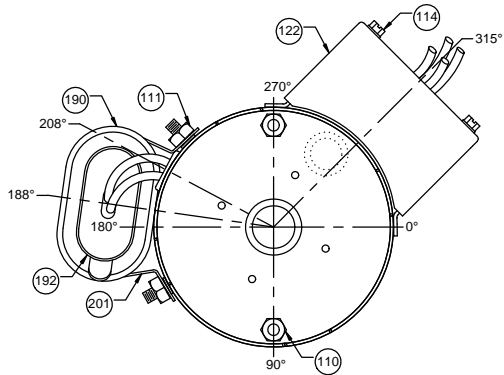
Technical Specifications

Electrical Type	Permanent Split Capacitor	Starting Method	Across The Line
Poles	2	Rotation	Clockwise Shaft End
Mounting	Extended Studs	Drive End Bearing	Ball
Opp Drive End Bearing	Ball	Frame Material	Steel
Shaft Type	Double Flat	Overall Length	9.82 in
Frame Length	4.39 in	Shaft Diameter	0.312 in
Shaft Extension	2.80 in		
Outline Drawing	71624015	Connection Drawing	00469129

This is an uncontrolled document once printed or downloaded and is subject to change without notice. Date Created:22/09/2020

BACK END

FRONT END



LEAD MATERIAL
 18 GA. 125°C 2/64 INUSL
 X-LINKED POLY. (1) BLACK
 AND (1) YELLOW
 13.00/11.00 [330.20/279.40]
 .56/.44 [14.22/11.18] STRIP
 (2) BROWN CAPACITOR LEADS
 6.00/4.00 [152.40/101.60]
 W/ FFLAG TERMS. 89034045
 AMP 42742-2
 (2) RED SWITCH LEADS
 17.00/15.00 [431.80/381.00]
 .56/.44 [14.22/11.18] STRIP

- NOTES:
 1. SWITCH RATING: 250 VAC, 5 AMP, CHECK SWITCH PERFORMANCE 100%.
 2. MOTOR USES 416 SS SHAFT.
 3. NO PACKAGING TAPE OVER CARTON LABEL.

61305568

00464072

00469129

SAFETY WARNING
 This motor must be grounded in accordance with local or national electrical codes to prevent possible injury due to electrical shock

AVERTISSEMENT DE SECURITE
 Ce moteur doit être fondée sur conformément à la réglementation locale ou national électrique codes pour prévenir d'éventuelles blessures en raison de choc électrique

FASCO Fasco Industries, Inc. Motor Division

Assembled in Mexico

No. 71624015 TYPE U62B1 T.P. AO LR6319

208-230 V 60/50 Hz Class B 1/15 HP

0.5 A 3450/2875 RPM Sealed Ball Brg

Model D1178

SW280-1 125VA-120V

4 MFD/370 VAC

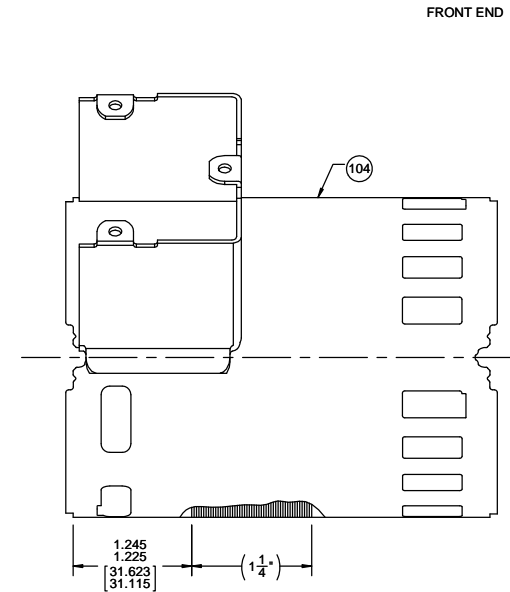
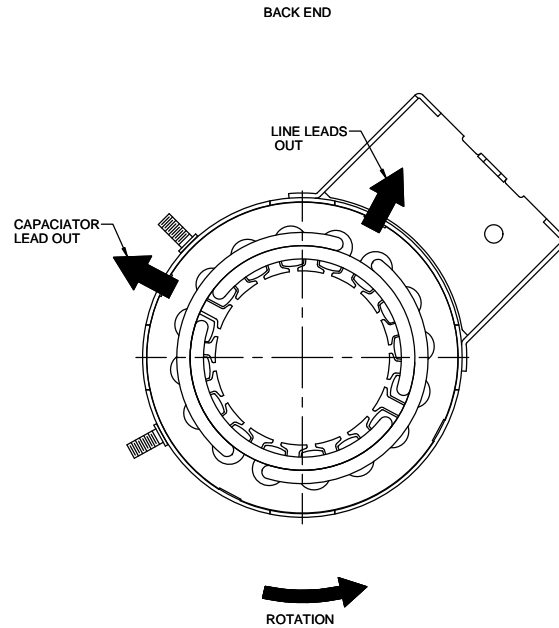
61299553

CUSTOMER:	FASCO DIST.	APPLICATION:	ROOF TOP UNIT
CUSTOMER PN:	D1178	MOTOR WEIGHT:	4.62 LBS
		ENVIRONMENT:	WET
MOTOR TYPE		REFERENCE SAMPLE	
P.S.C.			
B	LA	FR	A
00	62	34	F
		05	C
			E
			B
			A
TYPICAL PERFORMANCE AT 230 VOLTS 60 HZ			
CAP: 4 MFD/370 VAC			
IDLE		LOADED	
MOTOR SPEED	RPM	AMP	WATT
	3567	.26	58
		19.1	19.1
		3450	.41
		92	19.9
			1.08
			248
			48.5

DRAWING REVISION	REVISION BY	DATE	TOLERANCES UNLESS OTHERWISE SPECIFIED:	DRAWN BY	S.M.MAGGARD
U	SDM	12/1/2016	DEC. INCH mm ANGLE		
ECO-0113447	APPROVED BY	DATE	.XX ±0.1 [±2.5] ±1°	DATE	11-01-2001
ECO DESCRIPTION	PLA	12/1/2016	.XXX ±0.01 [±0.25]	APPROVED BY	
			.XXX ±0.005 [±0.127]	DATE	
			.XXXX ±0.0005 [±0.0127]	REFERENCE	
			REMOVE BURRS & BREAK SHARP EDGES: .003/.015 [0.076/.381] X 45° CORNER FILLETS: R.02 [S1]	MATERIAL	
			MACHINED SURFACES: 125 /mm 3/2 INCH /mm	DESCRIPTION	MOTOR ASSY
			mm SHOWN IN [BRACKETS]	THIRD ANGLE PROJECTION	
				SIZE	DRAWING NUMBER
				C	71624015
				PROCESS/FINISH	BLACK PAINT
				SHEET	1 OF 2

NOTES:

1. STAKE STATOR TO MAIN FRAME PER 88830264.
2. MAXIMUM TORQUE REQUIRED TO TURN MOTOR SHAFT IS 3/8 INCH-OUNCE.
3. ASSEMBLE SPRING BETWEEN WASHER AND BEARING ON BACK END, WITH SPRING FINGERS TOWARD BEARING.
4. STRING LINE AND SWITCH LEADS THROUGH CONDUIT BOX COVER PRIOR TO ATTACHING COVER TO BOX WITH (3) SCREWS.
5. ASSEMBLE BALL BEARINGS TO BEARING RETAINERS PER 88834419.



SWITCH INSTRUCTIONS

1. PRESS ACTUATOR ASSEMBLY AND THIMBLE ON SHAFT SO THAT TOP OF PLATE ON ACTUATOR IS LOCATED .568/.548 [14.427/13.919] FROM END OF SHAFT.
2. SWITCH MUST BE ADJUSTED TO OBTAIN .035/.025 [.889/.635] AIR GAP BETWEEN THIMBLE AND SWITCH IN FULL OPERATING POSITION.
3. SWITCH MUST MAKE CONTACT BETWEEN 1800-2500 RPM AS SPEED INCREASES AND BREAK 50-500 RPM BELOW ACTUAL MAKE.
4. ASSEMBLE SWITCH AND ACTUATOR PER 88834261
5. SWITCH MECHANISM TO GIVE QUIET OPERATION ABOVE 2500 RPM.
6. TIE SWITCH LEADS TO WELDBOLTS (2) PLACES WITH CABLE TIES PRIOR TO STRINGING LEADS THROUGH LEAD EXIT IN CLIP PLATE. SWITCH LEADS TO EXIT WITH LINE LEADS THROUGH CONDUIT BOX.

PACKING SPECIFICATIONS

1. PACK 1 PER CARTON, 18 PER LAYER, 6 LAYERS PER PALLET, 108 MAX. PER PALLET, PER 88834200.
2. PLACE MOTOR IN PLASTIC BAG, PLACE FOAM RING OPPOSITE SHAFT END, PLACE A 3 1/4" FILLER TUBE OVER SHAFT EXTENSION AND PLACE IN CARTON. CLOSE FLAPS AND TAPE. PLACE CARTON LABEL ON SHAFT END OF CARTON. LAY CARTONS ON SIDE ON PALLET.
3. PLACE ONE FLAT PAD ON PALLET AND ONE BETWEEN EACH LAYER.
4. CARTON LABELS MUST ALL FACE ONE DIRECTION TOWARD THE OPEN END OF THE PALLET. SEE 88834408.
5. NO PACKING TAPE OVER CARTON LABEL.

DRAWING REVISION U	REVISION BY SDM	DATE 12/1/2016	TOLERANCES UNLESS OTHERWISE SPECIFIED: DEC. INCH mm ANGLE	DRAWN BY S.M.MAGGARD	Regal Beloit America, Inc.	
ECO-0113447	APPROVED BY PLA	DATE 12/1/2016	.X ±0.1 [.25] ±1° .XX ±0.01 [.25] .XXX ±0.005 [.127] .XXXX ±0.0005 [.0127]	DATE 11-01-2001		
CHANGE PACKING NOTE			REMOVE BURRS & BREAK SHARP EDGES: .003/.015 [.076/.381] X 45° CORNER FILLETS: R.02 [.51]	APPROVED BY	DESCRIPTION MOTOR ASSY	
<small>COPYRIGHT REGAL BELOIT AMERICA, INC. ALL RIGHTS RESERVED. PROPRIETARY AND CONFIDENTIAL INFORMATION - THIS DOCUMENT IS THE PROPERTY OF REGAL BELOIT AMERICA, INC. FORMERLY AND CONTAINS OWNER'S PROPRIETARY INFORMATION. ANY PERSON, CORPORATION OR OTHER FIRM RECEIVING IT IS DEEMED, BY RECEIVING IT, TO AGREE THAT IT, AND/OR ANY PART OF IT, SHALL NOT BE DISCLOSED TO ANY PERSON, CORPORATION OR OTHER ENTITY, DUPLICATED, AND/OR USED, EXCEPT AS EXPRESSLY APPROVED IN WRITING IN ADVANCE BY OWNER. THIS DOCUMENT SHALL BE RETURNED TO OWNER UPON REQUEST. IT MAY BE SUBJECT TO CERTAIN RESTRICTIONS UNDER APPLICABLE EXPORT CONTROL LAWS AND REGULATIONS.</small>			MACHINED SURFACES: 1/25 / 3.2 INCH / mm V mm SHOWN IN [BRACKETS]	DATE	MATERIAL	PROCESS/FINISH BLACK PAINT
			THIRD ANGLE PROJECTION	SIZE C	DRAWING NUMBER 71624015	SHEET 2 OF 2