

PRODUCT INFORMATION PACKET

FASCO®

Model No: D117

Catalog No: D117

1/15-1/25-1/30-1/40 HP Fan Coil / Room Air Conditioner Motor, 1550 RPM, 4 Speed, 115 Volts, 4.4" Diameter, OAO
Fan Coil / Room Air Conditioner Motors



Regal and Fasco are trademarks of Regal Beloit Corporation or one of its affiliated companies.
©2019 Regal Beloit Corporation, All Rights Reserved. MC017097E

REGAL



Nameplate Specifications

Output HP	1/15-1/25-1/30-1/40 Hp	Output KW	0.05 kW
Frequency	60 Hz	Voltage	115 V
Current	2.5-1.5-1.2-1.0 A	Speed	1550 rpm
Service Factor	1	Phase	1
Duty	Air Over	Insulation Class	A
Frame	4.4	Enclosure	Open Air Over
Thermal Protection	Thermally Protected	Ambient Temperature	40 °C
UL	Recognized	CSA	Y
CE	N		

Technical Specifications

Electrical Type	Shaded Pole	Starting Method	Across The Line
Poles	4	Rotation	Counterclockwise Shaft End
Mounting	Extended Studs	Drive End Bearing	Sleeve
Opp Drive End Bearing	Sleeve	Frame Material	Na
Shaft Type	Flat	Overall Length	11.29 in
Shaft Diameter	0.500 in	Shaft Extension	7.5 in

This is an uncontrolled document once printed or downloaded and is subject to change without notice. Date Created:29/10/2019

- NOTES
1. THRU AIR SPACING BETWEEN WIRE AND METAL .063 MIN.
 2. TIE BOLT TORQUE TOLERANCE 7 - 10 IN. LBS.
 3. ROTOR FREQUENCY TO BE WITHIN 1 OZ. IN.
 4. FOR WASHER SET-UP, SEE CHART C690 0279, DETAIL "H".
 5. MAXIMUM 0.1 Ω RESISTANCE BETWEEN GROUND TERMINAL AND MOTOR FRAME.
 6. SALES TO SPECIFY ON P.O. WHICH PACK TO USE.

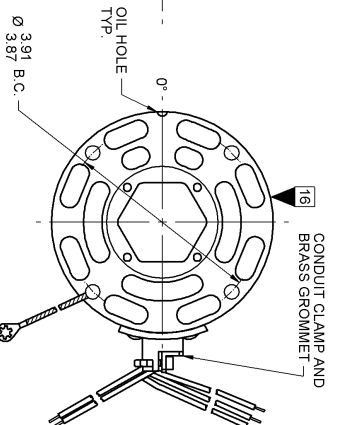
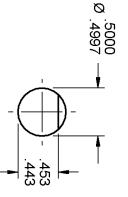
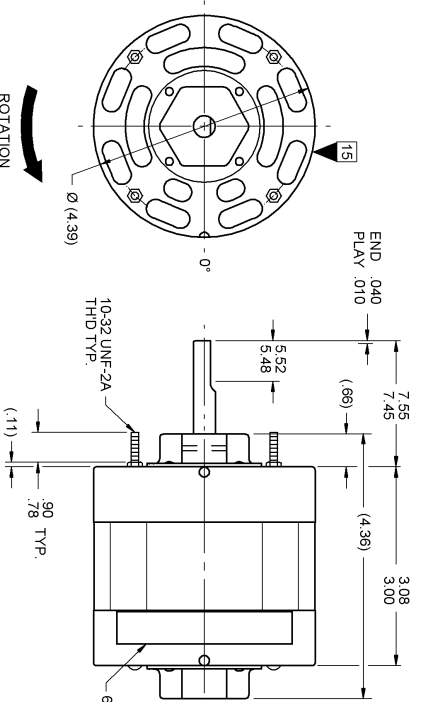
ECO	REV.	DATE	SPEC/CHECK
639598	22	5-4-09	MKR/MKR
625626	19	5-1-00	DLK/RWS
631904	20	10-10-03	LDC/LDC
638399	21	7-15-08	MKR/MKR

- 71xx xxxx,M
- A. SEE PACKAGING MANUAL PAGE 2 FOR PACKAGING PROCEDURES:
- 1 MOTOR/CARTON;
 - 20 MOTOR/SLAYER;
 - 6 LAYERS/PALLET;
 - 120 MOTORSPALLET.
- B. SEE DRAWING 8786 6079 SH. 1 FOR PALLET LAYOUT.
- C. CENTER LABEL, 6119 4001, ON END OF CARTON.
- D. PLACE PAMPHLET, 6122 4579, IN CARTON WITH MOTOR.

71xx xxxxC

PRODUCTION TEST AT IDLE 115 VOLTS 60 HZ	MOTOR SPEED	PERFORMANCE TEST 115 VOLTS 60 HZ 1 PH 1/15 HP				BREAK OZ/IN					
		IDLE AMP	WATT	LOADED AMP	WATT						
2.31 — 1.89	128.7 — 105.3	2.1	117	46	1550	2.4	175	20	3.4	238	52
1.32 — 1.08	77.0 — 63.0	1.2	70	26	1550	1.4	100	12	1.9	132	30
1.10 — .90	62.7 — 51.3	1.0	57	19	1550	1.1	79	10	1.5	104	24
.88 — .72	52.8 — 43.2	.8	48	15	1550	.9	65	8	1.3	85	19

HI-POT TEST 2000 VOLTS
MAX LEAKAGE CURRENT 5 mA
MOTORS MUST START WITH 90 VOLTS APPLIED TO LOWEST SPEED.



LEAD DATA: 18 GA. 2/64" INS. 105° C THERMO. WHITE, BLACK, BLUE, ORANGE AND RED 33.00"/31.00" LONG WITH .58"/.44" STRIPS.

GROUND DATA: 18 GA. 2/64" INS. 105° C THERMO. GRN/VYL. 7.00"/6.00" LONG WITH A # 10 SERRATED RING TERMINAL.

LEAD END 7108 5132 MA

SPECIAL INSTRUCTIONS: SHAFT IS BONDORIZED. PAMPHLET PACKED WITH MOTOR.

7108 5132 = MADE IN U.S.A.
7108 5132M = ASSEMBLED IN MEXICO.

FASCO FASCO INDUSTRIES, INC. THERMALLY PROTECTED SAFETY WARNING

CONNECTION DIAGRAM

WHITE LINE ASSIGNED IN ACCORDANCE WITH LOCAL OR NATIONAL ELECTRICAL CODES. BLUE LINE PREVENT RESISTIVE FAILURE DUE TO ELECTRICAL SHOCK.

DATE/BAR CODE AREA PER 8882 6003

6129 6724 M REV. 10

LOCATE NAMEPLATE .10 FROM FACE OF LEAD END COVER TO READ RIGHT FROM LEAD END OF MOTOR CENTER AT 0°.

SIZE 4.00 X .75

MOTORS PACKED MAX PER SKID:	PALLET PACK:	120 CARTON PACK
CUSTOMER:	FASCO DISTRIBUTING CO.	
PART NUMBER:	D117	
APPLICATION:	BLOWER	
FINISH COLOR:	GRAY	
MOTOR WEIGHT:	DRY	LBS.
ENVIRONMENT:	DRY	
INSULATION CLASS:	A	
MOTOR TYPE:	SHADED POLE	MOTOR NUMBER/REV.
		7108 5132 M
		22