

PRODUCT INFORMATION PACKET

FASCO®

Model No: D1143
Catalog No: D1143
1/20 HP OEM Replacement Motor, 1550 RPM, 115 Volts, 3.3" Diameter, OAO
HVAC/R OEM Replacement Motors



Regal and Fasco are trademarks of Regal Beloit Corporation or one of its affiliated companies.
©2020 Regal Beloit Corporation, All Rights Reserved. MC017097E

REGAL



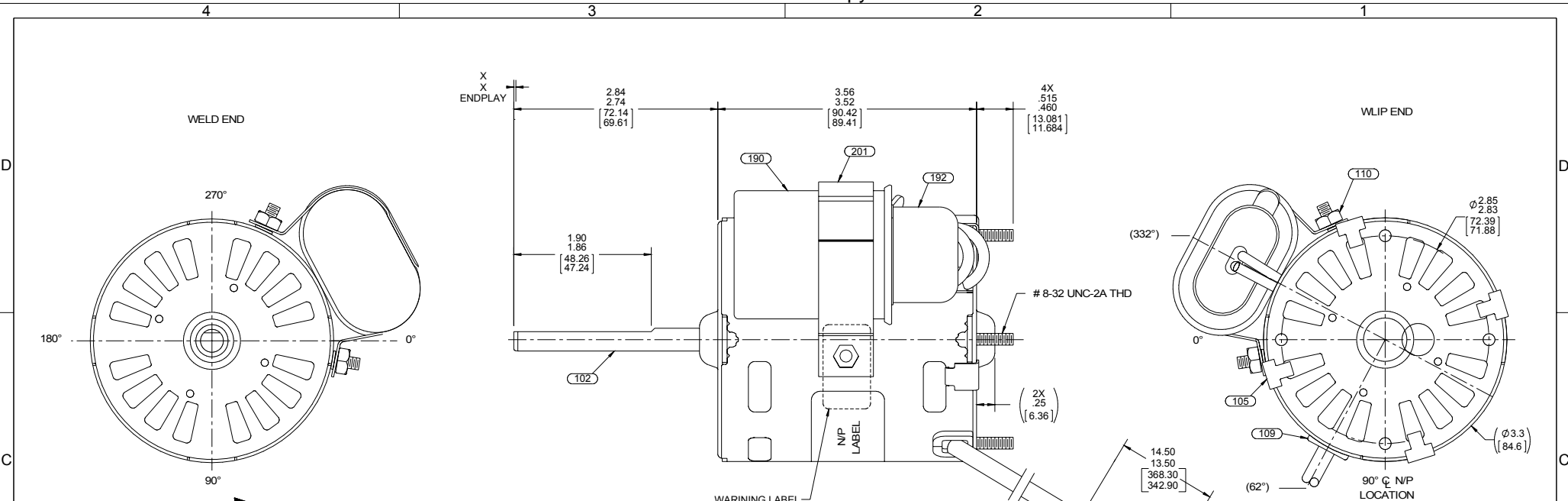
Nameplate Specifications

Output HP	1/20 Hp	Output KW	0.04 kW
Frequency	60 Hz	Voltage	115 V
Current	0.90 A	Speed	1550 rpm
Service Factor	1	Phase	1
Duty	Air Over	Insulation Class	B
Frame	3.3	Enclosure	Open Air Over
Thermal Protection	Thermally Protected	Ambient Temperature	40 °C
UL	Recognized	CSA	Y
CE	N		

Technical Specifications

Electrical Type	Permanent Split Capacitor	Starting Method	Across The Line
Poles	4	Rotation	Counterclockwise
Mounting	Extended Studs	Drive End Bearing	Ball
Opp Drive End Bearing	Ball	Frame Material	Steel
Shaft Type	Flat	Overall Length	6.40 in
Frame Length	3.32 in	Shaft Diameter	0.312 in
Shaft Extension	2.84 in		
Outline Drawing	71903304	Connection Drawing	00469071

This is an uncontrolled document once printed or downloaded and is subject to change without notice. Date Created:22/09/2020



- 1 LEAD MATERIAL
18 GA. 105°C 2/64 INS.
SJT 3 CONDUCTOR
BLACK, WHITE, GRN/YEL.
32.00/30.00[812.80/762.00] LONG
WHITE, AND BLACK,
W/ FFLAG TERMS. 8903 9162
AMP #2-520128-2
GRN/YEL W/ RING TERM. 8902 0157
AMP #350436-2
- 1 CAPACITOR LEADS
18 GA. 125°C 2/64 INS.
X-LINKED POLY, (2) BROWN,
6.00/4.00[152.40/101.60] LONG
W/ FLAG TERM. 8903 4045
AMP #42742-2

NOTES:
1. LEAD MATERIAL MUST BE FT1 , FT2 , AND VW-1 RATED.
2. NO PACKAGING TAPE OVER CARTON LABEL.

6130 5568

SAFETY WARNING
This motor must be grounded in accordance with local or national electrical codes to prevent possible injury due to electrical shock

AVERTISSEMENT DE SÉCURITÉ
Ce moteur doit être fondée sur conformément à la réglementation locale ou nationale électrique codes pour prévenir d'éventuelles blessures en raison de choc électrique

0046 4072

0046 9071

FASCO Fasco Industries, Inc. Motor Division

Assembled in Mexico

No. 71903304 TYPE U90B1
115 V 60 Hz Class B
0.9 A 1550 RPM
Model D1143
Max Amb. 40°C E46205
Thermally Protected

AO LR6319
1/20 HP
Sealed Ball Brg
E40513
E53469

Connection Diagram

Wht ——— Line
Blk ——— Line
Brn ———
Brn ———
Grn/Yel ——— Grd

5 MFD/370 VAC

6129 9553

APPLY IN A CONVENIENT LOCATION TO READ FROM CLIP END

CUSTOMER PN: D1143		ENVIRONMENT: DRY							
CUSTOMER: FASCO DIST.		APPLICATION: -							
		MOTOR WEIGHT: 3.25 LBS.							
CUSTOMER APPROVAL	FRONT SHAFT POSITION								
SIGNED:	HORIZONTAL	UP	MOTOR TYPE						
		DOWN	P.S.C.						
DATE:			REFERENCE SAMPLE NUMBER						
			71903304						
TYPICAL PERFORMANCE AT 115 VOLTS 60 HZ									
MOTOR SPEED	IDLE			FULL LOAD			LOCKED		BREAK
	RPM	AMP	WATT	IN OZ	RPM	AMP	WATT	IN OZ	AMP
	1784	.38	30	37.6	1550	.69	74	15.5	1.32
									140
									43.3

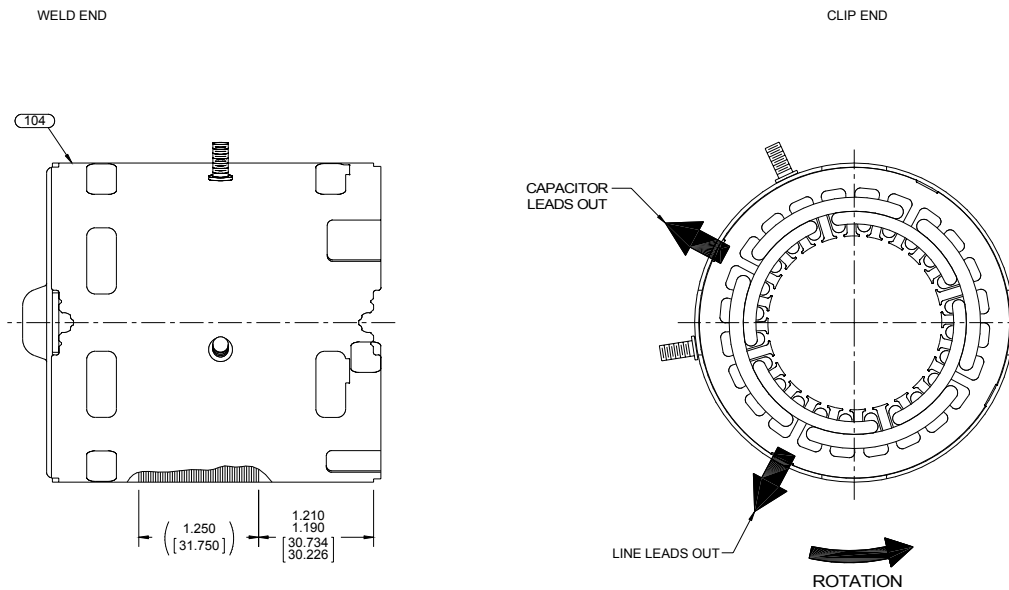
DRAWING REVISION: A	REVISION BY: Q.ZHAO	DATE: 09-18-2015	TOLERANCES UNLESS OTHERWISE SPECIFIED: DEC. INCH mm ANGLE X +0.1 [+2.5] ±0.5 XX +0.01 [+0.25] XXX +0.005 [+0.127] XXXX +0.0005 [+0.0127]	DRAWN BY: S.DALTON
ECO-0075861	APPROVED BY: C.ZHANG	DATE: 09-18-2015	DATE: 10-10-2011	APPROVED BY:
SEE ECO			DESCRIPTION: MODEL-SFHP-3.3	
MATERIAL: 125 / 3.2			PROCESS/FINISH: BLACK	
MACHINED SURFACES: 125 / 3.2			DRAWING NUMBER: 71903304	
THIRD ANGLE PROJECTION			SHEET: 1 OF 2	

4

3

2

1



NOTES:

1. STAKE STATOR TO SLEEVE PER P.S. 8883 0264.
2. MAXIMUM TORQUE REQUIRED TO TURN MOTOR SHAFT IS 3/8 INCH-OUNCE.
3. ASSEMBLE SPRING BETWEEN WASHER AND BEARING ON CLIP END, WITH SPRING FINGERS TOWARDS BEARING.
4. ASSEMBLE BALL BEARINGS TO BEARING RETAINERS PER WORK CENTER PROCESS.
5. BRING LINE LEADS DIRECTLY OUT LEAD EXIT. IGNORE POSITION OF OTHER LEADS, THEY WILL ROTATE BACK TO THEIR LEAD EXIT.
6. WHEN PRESSING ON SLEEVE, ROTATE SLEEVE C.C.W. SO THAT THE EDGE OF JACKET IS INSIDE SLEEVE.

PACKING SPECIFICATIONS

1. PACK PER P.S. 8883 4200. 1 PER CONTAINER, 175 MAX. PER PALLET, 25 PER LAYER, 7 LAYERS PER PALLET.
2. PLACE CARTON LABEL ON SHAFT END OF CARTON. CARTON LABELS MUST ALL FACE ONE DIRECTION TOWARD THE OPEN END OF THE PALLET. SEE P.S. 8883 4408.
3. PLACE FOAM RING ON CLIP END OF MOTOR. PLACE FILLER TUBE OVER SHAFT EXTENSION AND PLACE IN CARTON. STUFF PAPER AROUND MOTOR TO PREVENT MOVEMENT DURING SHIPPING.
4. PLACE (1) FLAT PAD ON PALLET, (1) BETWEEN EACH LAYER AND (1) ON TOP.

DRAWING REVISION A	REVISION BY Q.ZHAO	DATE 09-18-2015	TOLERANCES UNLESS OTHERWISE SPECIFIED: DEC. INCH mm ANGLE .X ±0.1 [±2.5] ±0.5° .XX ±0.01 [±0.25] .XXX ±0.005 [±0.127] .XXXX ±0.0005 [±0.0127]	DRAWN BY S.DALTON	DATE 10-10-2011	DESCRIPTION MODEL-SFHP-3.3 OUTLINE
ECO ECO-0075861	APPROVED BY C.ZHANG	DATE 09-18-2015	SEE ECO	APPROVED BY	DATE	MATERIAL
ECO DESCRIPTION			SEE ECO	REFERENCE	THIRD ANGLE PROJECTION	PROCESS/FINISH BLACK
<small>COPYRIGHT REGAL BELOIT AMERICA, INC. ALL RIGHTS RESERVED. PROPRIETARY AND CONFIDENTIAL INFORMATION. THIS DOCUMENT IS THE PROPERTY OF REGAL BELOIT AMERICA, INC. FORMERLY AND CONTAINS OWNERS PROPRIETARY INFORMATION. ANY PERSON, CORPORATION OR OTHER FIRM RECEIVING IT IS DEEMED, BY RECEIVING IT, TO AGREE THAT IT, AND/OR ANY PART OF IT, SHALL NOT BE DISCLOSED TO ANY PERSON, CORPORATION OR OTHER ENTITY, DUPLICATED, AND/OR USED, EXCEPT AS EXPRESSLY APPROVED IN WRITING IN ADVANCE BY OWNER. THIS DOCUMENT SHALL BE RETURNED TO OWNER UPON REQUEST. IT MAY BE SUBJECT TO CERTAIN RESTRICTIONS UNDER APPLICABLE EXPORT CONTROL LAWS AND REGULATIONS.</small>			REMOVE BURRS & BREAK SHARP EDGES: .0031 015 [0.076381] X 45° CORNER FILLETS: R.02 [51] MACHINED SURFACES: .125 / 3.2 INCH V mm V mm SHOWN IN [BRACKETS]	DRAWING NUMBER 71903304	SHEET 2 OF 2	