

# PRODUCT INFORMATION PACKET

FASCO®

Model No: D114

Catalog No: D114

1/12 HP Fan Coil / Room Air Conditioner Motor, 1550 RPM, 115/230 Volts, 4.4" Diameter, TEAO  
Fan Coil / Room Air Conditioner Motors



Regal and Fasco are trademarks of Regal Beloit Corporation or one of its affiliated companies.  
©2019 Regal Beloit Corporation, All Rights Reserved. MC017097E

REGAL



**Nameplate Specifications**

Output HP	1/12 Hp	Output KW	0.06 kW
Frequency	60 Hz	Voltage	115/230 V
Current	2.5/1.3 A	Speed	1550 rpm
Service Factor	1	Phase	1
Duty	Air Over	Insulation Class	A
Frame	4.4	Enclosure	Totally Enclosed Air Over
Thermal Protection	Thermally Protected	Ambient Temperature	40 °C
UL	Recognized	CSA	Y
CE	N		

**Technical Specifications**

Electrical Type	Shaded Pole	Starting Method	Across The Line
Poles	4	Rotation	Clockwise Shaft End
Mounting	Extended Studs	Drive End Bearing	Sleeve
Opp Drive End Bearing	Sleeve	Frame Material	Na
Shaft Type	Flat	Overall Length	7.62 in
Shaft Diameter	0.375 in	Shaft Extension	3 in

This is an uncontrolled document once printed or downloaded and is subject to change without notice. Date Created:29/10/2019

- NOTES:
1. THRU AIR SPACING BETWEEN WIRE AND METAL .094 MIN.
  2. THE BOLT TORQUE TOLERANCE 7-10 IN. LBS.
  3. ROTOR FREEMESS TO BE WITHIN .3/4 OZ. IN.
  4. FOR WASHER SET-UP, SEE CHART C600 0279. DETAIL "H"
  5. MAXIMUM 0.1 Ω RESISTANCE BETWEEN GROUND TERMINAL AND MOTOR FRAME.
  6. SALES TO SPECIFY ON P. O. WHICH PACK TO USE.

ECO	REV.	DATE	SPEC/CHECK
631507	2	7-18-03	MKR/MKR
638882	3	10-7-08	LDG/LDC
639626	4	5-7-09	MKR/MKR
4005968	05	7/11/2011	PLM/MLM

- A. SEE PACKAGING MANUAL PAGE 2 FOR PACKAGING PROCEDURE.
- 1 MOTOR/CARTON;  
45 MOTOR/LAYER;  
6 LAYERS/PALLET;  
270 MOTOR/PALLET.
- B. SEE DRAWING 8786 6079 SH. 1 FOR PALLET LAYOUT.
- C. CENTER CARTON LABEL ON END OF CARTON.
- D. PLACE PAMPHLET, 6122 4579, IN CARTON WITH MOTOR.
- E. CARTON LABELS MUST ALL FACE ONE DIRECTION TOWARD THE OPEN END OF THE PALLET.
- F. NO PACKAGING TAPE OVER CARTON LABEL.

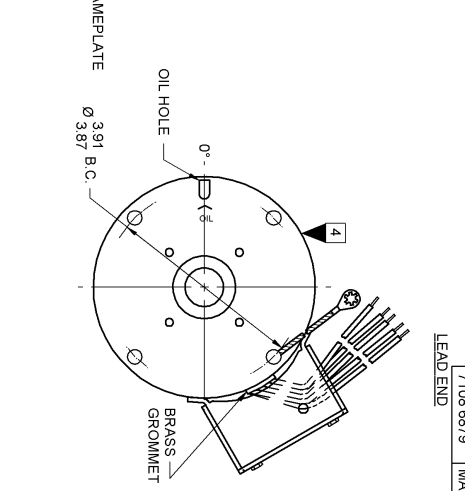
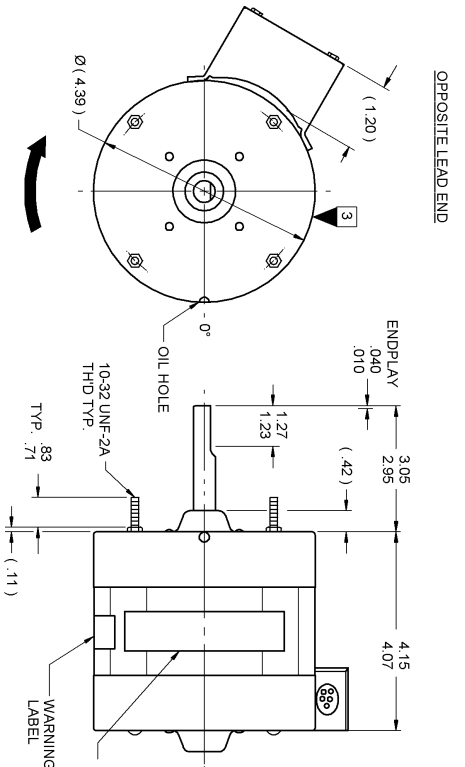
71xx xxxxC		71xx xxxx,M	
LOADED	1 PH	1/12 HP	BREAK
AMP	WATT	AMP	OZ/IN
1.98	1.62	104.5	85.5
.99	.81	104.5	85.5

PRODUCTION TEST AT IDLE		MOTOR VOLTAGE		PERFORMANCE TEST		115/230 VOLTS		90 HZ		1 PH		1/12 HP		LOADED		LOCKED		BREAK	
AMP	WATT	RPM	AMP	WATT	OZ/IN	RPM	AMP	WATT	OZ/IN	AMP	WATT	OZ/IN	AMP	WATT	OZ/IN	AMP	WATT	OZ/IN	
1.98	1.62	104.5	85.5	115 V	1768	1.8	95	57	1550	2.4	166	20	3.3	198	60				
.99	.81	104.5	85.5	230 V	1768	.9	95	57	1550	1.2	166	20	1.7	198	60				

HI-POT TEST 2000 VOLTS

MOTORS MUST START WITH 180 VOLTS APPLIED TO LOWEST SPEED.

MAX LEAKAGE CURRENT 5 mA



**SAFETY WARNING**  
THE MOTOR MUST BE GROUND-ED TO PREVENT POSSIBLE FULFURY TO PERSONS OR DAMAGE TO EQUIPMENT.  
SEE THE INSTRUCTION MANUAL FOR THE CORRECT GROUNDING METHOD.

LEAD DATA: 18 GA. 2/64" INS. 105° C THERMO WHITE, BLACK, BLUE, RED AND PURPLE LINE LEADS 28 007/26 007 LONG WITH .58/744 STRIPS LEADS MEASURED FROM PERIPHERY OF COVER

GROUND DATA: 18 GA. 2/64" INS. 105° C THERMO GRN/YEL 7 007/6 007 LONG WITH #10 SERRATED RING TERMINAL.

0046 4072

0046 4533

SPECIAL INSTRUCTIONS: SHAFT IS BONDZERIZED. PAMPHLET PACKED WITH MOTOR.

**FASCO** Fasco Industries, Inc. Motor Division

Assembled in Mexico  
No. 71086879  
115/230 V  
2.5/1.3 A  
Model D114  
Thermally Protected

TYPE UB  
80 Hz  
1550 RPM  
Max Amp: 40°C

TEAO PH 1  
1/12 HP

Connection Diagram  
115 V Line WH- 230 V Line  
WH- 230 V Line  
Blk- Not Used  
Blk- Not Used  
Red- Not Used  
Red- Not Used  
Blk- Line  
Blk- Line

LOCATE ☉ OF NAMEPLATE ON ☉ OF STATOR TO READ RIGHT FROM LEAD END OF MOTOR CENTER AT 0°.

6129 4832

61299553

MOTORS PACKED MAX PER SKID:		PALLET PACK: 270 CARTON PACK.	
CUSTOMER: FASCO DISTRIBUTING CO.		PROPERTY: DO NOT BORROW OR DISCLOSE TO THIRD PARTIES WITHOUT WRITTEN PERMISSION OF FASCO IND. INC., ELDON MO.	
PART NUMBER: D114		FASCO INDUSTRIES, INC. MOTOR DIVISION	
APPLICATION: DIST. SALES		ELDON PLANT	
FINISH COLOR: GRAY		MOTOR TYPE: SHADED POLE	
MOTOR WEIGHT: 8.63 LBS.		MOTOR NUMBER: 7108 6879	
ENVIRONMENT: DRY		REV: 05	
INSULATION CLASS: A			