

PRODUCT INFORMATION PACKET

FASCO®

Model No: D1127

Catalog No: D1127

1/12 HP OEM Replacement Motor, 1550 RPM, 115/230 Volts, 3.3" Diameter, Semi Enclosed
HVAC/R OEM Replacement Motors



Regal and Fasco are trademarks of Regal Beloit Corporation or one of its affiliated companies.
©2020 Regal Beloit Corporation, All Rights Reserved. MC017097E

REGAL



Nameplate Specifications

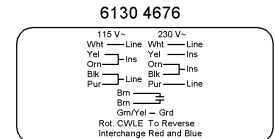
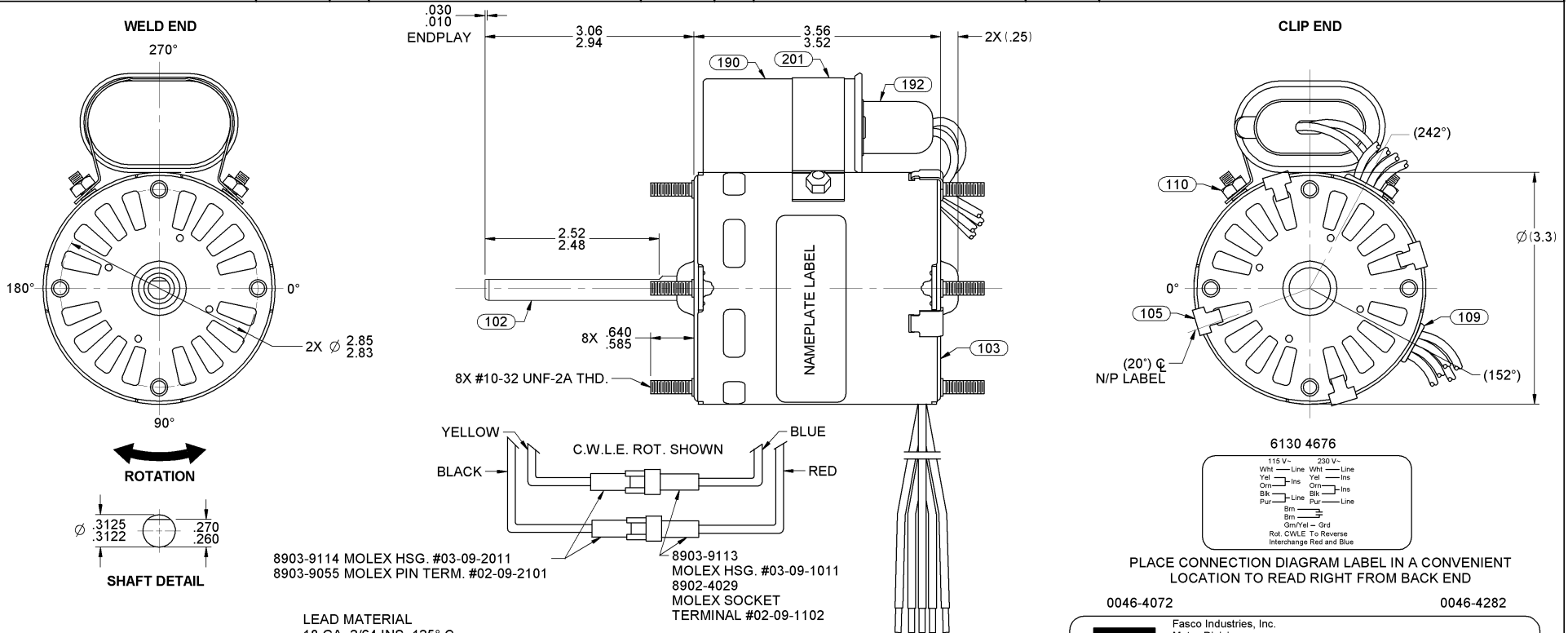
Output HP	1/12 Hp	Output KW	0.06 kW
Frequency	60 Hz	Voltage	115/230 V
Current	1.10/0.60 A	Speed	1550 rpm
Service Factor	1	Phase	1
Duty	Air Over	Insulation Class	B
Frame	3.3	Enclosure	Open Air Over
Thermal Protection	Thermally Protected	Ambient Temperature	40 °C
UL	Recognized	CSA	Y
CE	N		

Technical Specifications

Electrical Type	Permanent Split Capacitor	Starting Method	Across The Line
Poles	4	Rotation	Reversible
Mounting	Extended Studs	Drive End Bearing	Sleeve
Opp Drive End Bearing	Sleeve	Frame Material	Steel
Shaft Type	Flat	Overall Length	6.87 in
Frame Length	3.32 in	Shaft Diameter	0.313 in
Shaft Extension	3.06 in		
Connection Drawing	00464282	Outline Drawing	7190302608_S001

This is an uncontrolled document once printed or downloaded and is subject to change without notice. Date Created:22/09/2020

06	ADDED CARTON LABEL NOTES	4002577 MLM 7/7/11	07	REVISED REVERSING LEAD COLORS AND LEAD LENGTH	4003241 SD 9-20-11	08	ADDED GROUND LEAD DATA	0062180 SD 11/7/2014	STANDARD TOLERANCES: ANGULAR +/- 1 DEGREE 2 PLACE DECIMAL +/- .01 3 PLACE DECIMAL +/- .005
----	--------------------------	-----------------------	----	---	-----------------------	----	------------------------	-------------------------	---



PLACE CONNECTION DIAGRAM LABEL IN A CONVENIENT LOCATION TO READ RIGHT FROM BACK END

0046-4072

0046-4282

Fasco Industries, Inc.
Motor Division

Assembled in Mexico
No. 71903026
115/230 V
1.1/0.6 A
Model D1127
LR6319

TYPE U9081
60 Hz
1550 RPM

T.P. AO
Class B
1/12 HP
Max Amb: 40° C

SAFETY WARNING
This Motor Must Be Grounded in Accordance With Local Or National Electrical Codes To Prevent Possible Injury Due To Electrical Shock

7.5 MFD/370 VAC

FRONT SHAFT POSITION		TYPICAL PERFORMANCE AT 115/230 VOLTS 60 Hz.										CAP: 7.5 MFD 370 VAC				CUSTOMER: FASCO DIST.	
HORIZONTAL	MOTOR SPEED	IDLE			LOADED			LOCKED			BREAK	PART NUMBER: D1127		APPLICATION: REFRIGERATION			
		R.P.M.	AMP.	WATT	IN.OZ.	R.P.M.	AMP.	WATT	IN.OZ.	AMP.		WATT	IN.OZ.	MOTOR WEIGHT: 3.6 LBS.			
UP DOWN	115 V~	1790	.61	66	52.6	1550	1.04	119	21.5	1.49	168	53.2	ENVIRONMENT: DRY		CONFIDENTIAL: DO NOT DUPLICATE OR DISCLOSE TO THIRD PARTIES WITHOUT WRITTEN PERMISSION OF FASCO MOTORS GROUP, AC MOTOR/BLOWER DIVISION.		
	230 V~	1790	.34	74	49.3	1550	.50	115	19.7	.76	170	51.3	FINISH COLOR: BLACK		MOTOR TYPE: P.S.C. DRAWING NUMBER: 7190 3026		
CUSTOMER APPROVAL: SIGNED: DATE:												DRAWN BY: S. M. MAGGARD		DATE DRAWN: 11-28-2005		REV. 08	

If Printed, this is an Uncontrolled Document.