

PRODUCT INFORMATION PACKET

FASCO®

Model No: D1092

Catalog No: D1092

1/3 HP OEM Replacement Motor, 1675/1080 RPM, 2 Speed, 115 Volts, 42 Frame, OAO
HVAC/R OEM Replacement Motors



Regal and Fasco are trademarks of Regal Beloit Corporation or one of its affiliated companies.
©2020 Regal Beloit Corporation, All Rights Reserved. MC017097E

REGAL



Nameplate Specifications

Output HP	1/3 Hp	Output KW	0.25 kW
Frequency	60 Hz	Voltage	115 V
Current	3.4 A	Speed	1675/1080 rpm
Service Factor	1	Phase	1
Duty	Continuous	Insulation Class	B
Frame	42	Enclosure	Open Air Over
Thermal Protection	Automatic	Ambient Temperature	40 °C
UL	Recognized	CSA	Y
CE	N		

Technical Specifications

Electrical Type	Permanent Split Capacitor	Starting Method	Across The Line
Poles	4	Rotation	Counterclockwise Shaft End
Mounting	Extended Studs	Drive End Bearing	Sleeve
Opp Drive End Bearing	Sleeve	Frame Material	Na
Shaft Type	Flat	Overall Length	15.02 in
Shaft Diameter	0.500 in	Shaft Extension	7.92 in
Outline Drawing	7184043200_S001	Connection Drawing	SEE OUTLINE

This is an uncontrolled document once printed or downloaded and is subject to change without notice. Date Created:22/09/2020

NOTES

1. THRU AIR SPACING BETWEEN WIRE AND METAL .094 MIN.
2. TIE BOLT TOLERANCE 7 - .12 IN. LBS.
3. FOR WASHER SET-UP, SEE CHART 0600 0279, DETAIL "A".
4. SALES TO SPECIFY ON P.O. WHICH PACK TO USE.

ECO	REV.	DATE	SPEC/CHECK
640992	0	1-21-10	MKR/MKR

71xx xxxx,R

A. SEE PACKAGING MANUAL PAGE 2 FOR PACKAGING PROCEDURES

1 MOTOR/CARTON;
16 MOTORS/LAYER;
6 LAYERS/PALLET;
96 MOTORS/PALLET.

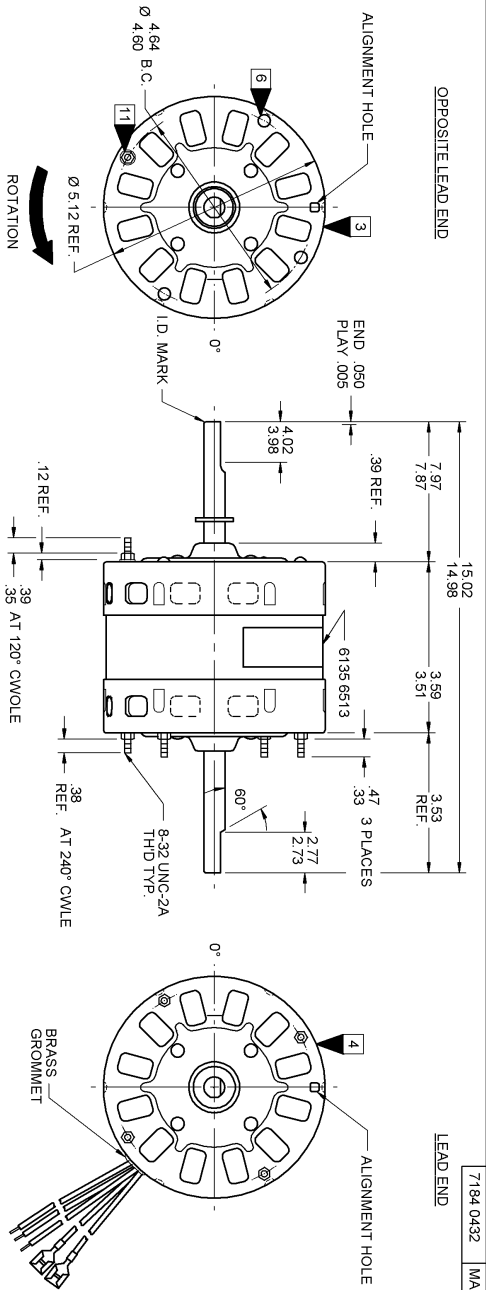
B. SEE DRAWING 8786 6079 SH. 1 FOR PALLET LAYOUT.
C. CENTER LABEL, 6120 7039, ON END OF CARTON.
D. PLACE PAMPHLET, 6122 4579, IN CARTON WITH MOTOR.

71xx xxxxC

71xx xxxxZ

PRODUCTION TEST AT 115 VOLTS 60 HZ		PERFORMANCE TEST 115 VOLTS 60 HZ 1 PH 1/3 HP CAP. 7.5 MFD 370 VAC						BREAK
AMP	WATT	IDLE		LOADED		LOCKED		
		AMP	WATT	AMP	WATT	AMP	OZ/IN	
1.80	1.46	1.64	1.29	209.5	1625	3.69	409	
							86.0	
							7.78	
							763	
							280.5	
.72	.52	81.0	60.0	132.0	1080*	3.76	385	
							48.0	
							4.46	
							431	
							142.7	

HI-POT TEST 2000 VOLTS
MAX LEAKAGE CURRENT 5 mA
BELOW BREAK *



LEAD DATA: 18 GA. 2/64" INS. 105° C THERMO. WHITE, BLACK AND RED LINE LEADS WITH .567" 44" STRIPS. BROWN AND BRN/WHIT CAP. LEADS WITH 1/4" IN-LINE TERMINALS. ALL LEADS ARE 25.00/23.00" LONG AND RATED VW-1.

SPECIAL INSTRUCTIONS: FLATS TO BE PARALLEL WITHIN ± 20°. SHAFT IS BONDERIZED. ROTOR IS RUSTPROOFED. ALL BOLTS TO HAVE LOCKING WINGS TO RESIST ROTATION. PAMPHLET PACKED WITH MOTOR.

MOTORS PACKED MAX. PER SKID: PALLET PACK 96 CARTON PACK TRAY PACK

CUSTOMER: FASCO DISTRIBUTING CO.

PROPERTY: DO NOT SHIP/LOST OR DISCLOSE TO THIRD PARTIES WITHOUT WRITTEN PERMISSION OF FASCO IND. INC., ELSON MO.

FINISH COLOR:	GRAY	MOTOR TYPE	P.S.C.	MOTOR NUMBER	REV.					
B	LA	FR	A	S	C	E	B	A	7184 0432	0
00	94	10	V	05	AE	6	7	0		

7184 0432 = MADE IN U.S.A.
7184 0432R = ASSEMBLED IN MEXICO

FASCO INDUSTRIES, INC.
MOTOR DIVISION

Part 1 40° C AMB AD 80T →
HP 1/3 AMP 3.4 INS CL. B CAP 7.5 MFD 370 VAC
RPM 1675/1060 TYPE UT18481 NO. 7184-0432
DATE/FABR CODE AREA VER. 8882 6003

SAFETY WARNING
THERMALLY PROTECTED
BRN/WHIT CAP. LEADS WITH 1/4" IN-LINE TERMINALS. ALL LEADS ARE 25.00/23.00" LONG AND RATED VW-1.
DUE TO ELECTRICAL SHOCK

LOCATE & OF NAMEPLATE ON & OF STATOR TO READ RIGHT FROM
LEAD END OF MOTOR CENTER AT 80° CWOLE.
SIZE 4.00 X .75