

# PRODUCT INFORMATION PACKET

FASCO®

Model No: D109  
Catalog No: D109  
1/15 HP Fan & Blower Motor, 1600 RPM, 120 Volts, 3.3" Diameter, Semi Enclosed  
Self Cooled Motors



Regal and Fasco are trademarks of Regal Beloit Corporation or one of its affiliated companies.  
©2019 Regal Beloit Corporation, All Rights Reserved. MC017097E

REGAL



**Nameplate Specifications**

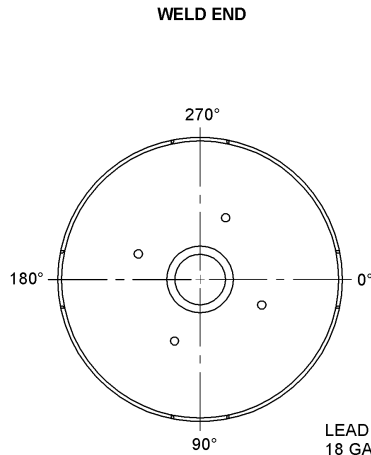
Output HP	1/15 Hp	Output KW	0.05 kW
Frequency	60 Hz	Voltage	120 V
Current	2.0 A	Speed	1600 rpm
Service Factor	1	Phase	1
Duty	Air Over	Insulation Class	B
Frame	3.3	Enclosure	Open Air Over
Thermal Protection	Thermally Protected	Ambient Temperature	40 °C
UL	Recognized	CSA	Y
CE	N		

**Technical Specifications**

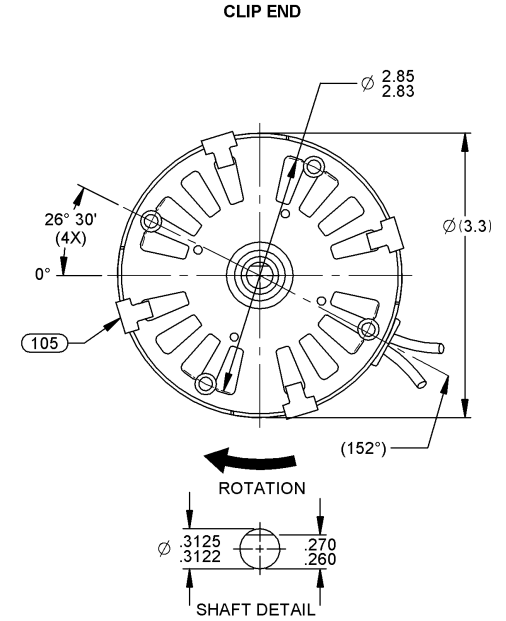
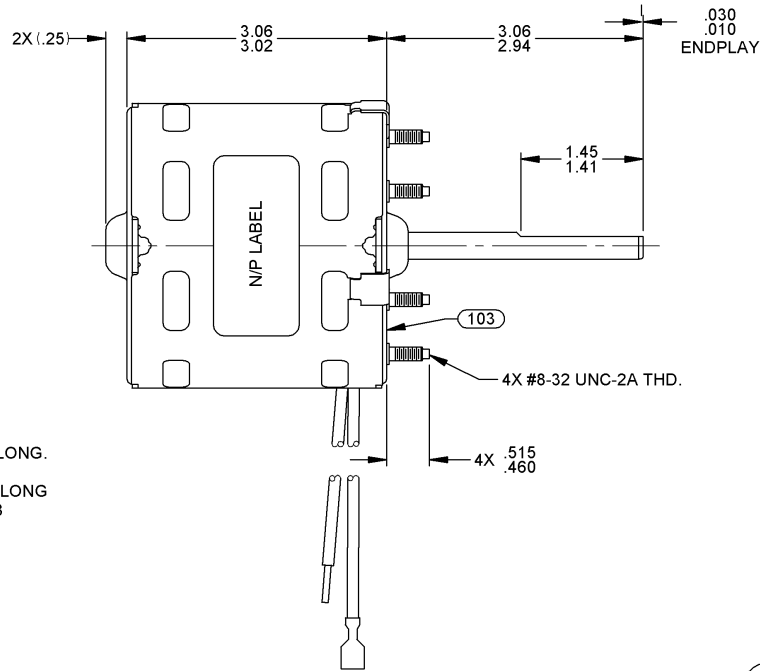
Electrical Type	Shaded Pole	Starting Method	Across The Line
Poles	12	Rotation	Clockwise Shaft End
Mounting	Extended Studs	Drive End Bearing	Sleeve
Opp Drive End Bearing	Sleeve	Frame Material	Steel
Shaft Type	Flat	Overall Length	6.91 in
Frame Length	2.82 in	Shaft Diameter	0.313 in
Shaft Extension	3.00 in		

This is an uncontrolled document once printed or downloaded and is subject to change without notice. Date Created:29/10/2019

12	REVISED N/P FORMAT, UPDATED STANDARDS PLA 11/28/07	13	REMOVED BARCODE FROM LABEL, ADDED CARTON LABEL NOTE TO PACKING	MLM 6/9/10	14	ADDED PACKING NOTES TO SH. 01 & SH. 02, ADDED 416 S.S. SHAFTING NOTE	4005182 BP 4/05/2012	STANDARD TOLERANCES: ANGULAR +/- 1 DEGREE 2 PLACE DECIMAL +/- .01 3 PLACE DECIMAL +/- .005
----	---	----	--	------------	----	--	-------------------------	---



**LEAD MATERIAL**  
18 GA. 125°C 2/64 INSUL.  
X-LINKED POLY.  
(1) BLACK, 14.00/12.00 IN LONG.  
.44/.32 IN STRIP (TINNED)  
(1) BLACK, 18.00/16.00 IN LONG  
MSPADE TERM. 8903-9148  
AMP #2-520102-2



- NOTES:
1. MOTOR HAS 416 S.S. SHAFTING.
  2. NO PACKAGING TAPE OVER CARTON LABEL.

0046-4072

0046-4282

<b>FASCO</b> Assembled in Mexico No. 71730295 120 V 2.0 A Model D109 Thermally Protected	Fasco Industries, Inc. Motor Division TYPE U73B1 60 Hz 1600 RPM	<b>UL</b> AO LR6319 Class B 1/15 HP	<b>SAFETY WARNING</b>  This Motor Must Be Grounded in Accordance With Local Or National Electrical Codes To Prevent Possible Injury Due To Electrical Shock
--	---	--	---

61299553

FRONT SHAFT POSITION		* TYPICAL PERFORMANCE AT 120 VOLTS 60 Hz.											CUSTOMER: FASCO DIST.		<b>FASCO</b> FASCO MOTORS GROUP AC MOTOR/BLOWER DIVISION									
HORIZONTAL	MOTOR SPEED	IDLE			LOADED			LOCKED			BREAK	PART NUMBER: D109		CONFIDENTIAL; DO NOT DUPLICATE OR DISCLOSE TO THIRD PARTIES WITHOUT WRITTEN PERMISSION OF FASCO MOTORS GROUP, AC MOTOR/BLOWER DIVISION.										
		R.P.M.	AMP.	WATT	IN.OZ.	R.P.M.	AMP.	WATT	IN.OZ.	AMP.	WATT	IN.OZ.	APPLICATION: HUMIDIFIER		MOTOR TYPE		DRAWING NUMBER							
		1761	1.84	105	41.4	1600	2.09	157	19.2	3.26	242	54.4	MOTOR WEIGHT: 3.75 LBS.		SHADED POLE									
CUSTOMER APPROVAL:													ENVIRONMENT: DAMP		7173 0295									
SIGNED:													FINISH COLOR: BLACK		B	LA	FR	A	S	C	E	B	A	REV.
DATE:													DRAWN BY: RM		00	73	30	V	06	OA	5	3	0	14
													DATE DRAWN: 3-19-2001											