

PRODUCT INFORMATION PACKET



Model No: D1076
Catalog No: D1076
3/4 HP Fan & Blower Motor, 1075 RPM, 3 Speed, 208-230 Volts, 48 Frame, OAO
Direct Drive Motors



Regal and Century are trademarks of Regal Beloit Corporation or one of its affiliated companies.
©2020 Regal Beloit Corporation, All Rights Reserved. MC017097E





Nameplate Specifications

| | | | |
|--------------------|-------------------|---------------------|----------------------|
| Output HP | 3/4 Hp | Output KW | 0.56 kW |
| Frequency | 60 Hz | Voltage | 208-230 V |
| Current | 5.5 A | Speed | 1075 rpm |
| Service Factor | 1 | Phase | 1 |
| Duty | Air Over | Insulation Class | B |
| Frame | 48 | Enclosure | Open Enclosed |
| Thermal Protection | Automatic | Ambient Temperature | 40 °C |
| UL | Recognized | CSA | Y |
| CE | N | | |

Technical Specifications

| | | | |
|-------------------|----------------------------------|-----------------------|------------------------|
| Electrical Type | Permanent Split Capacitor | Starting Method | Across The Line |
| Poles | 6 | Rotation | Reversible |
| Mounting | Resilient Rings | Motor Orientation | Horizontal |
| Drive End Bearing | Sleeve | Opp Drive End Bearing | Sleeve |
| Frame Material | Rolled Steel | Shaft Type | Flat |
| Overall Length | 10.61 in | Frame Length | 5.00 in |
| Shaft Diameter | 0.500 in | Shaft Extension | 4.5 in |
| Outline Drawing | D1076-S01 | Connection Drawing | 614131-151 |

This is an uncontrolled document once printed or downloaded and is subject to change without notice. Date Created:10/09/2020

GENERAL INFORMATION:

SHAFT RUNOUT: .001[.025] T.I.R. PER INCH LENGTH OF EXTENSION

END PLAY: .010 TO .063[.254 TO 1.600]

BEARINGS: SLEEVE

MOUNTING POSITION: HORIZONTAL

ELECTRICAL DATA:

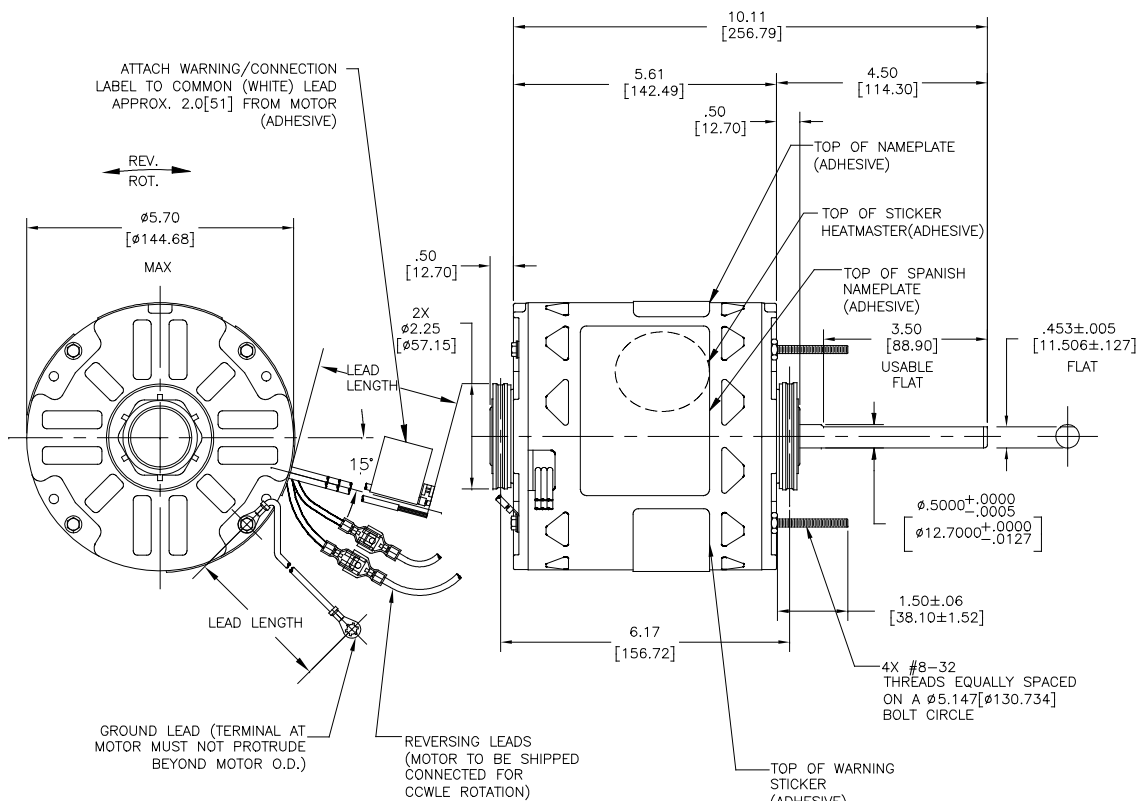
OVERLOAD PROTECTOR: AUTOMATIC RESET (SENSATA 7AM 036)

LEADS: NO. 18 GA., .03[.76] THICK 125°C INSUL.

GROUND LEAD: NO. 18., .03[.76] THICK (GREEN) INSUL.

NOTES:

1. THE SYMBOL OF CTQ: ▲ (NO CTQ ON THIS DRAWING).
2. RoHS & REACH REQUIREMENT SEE EP000014_5.1.



| LEAD DATA | | |
|--------------|--------------------|---------------------------------|
| COLOR | LENGTH | TERMINAL OR STRIP LENGTH |
| BROWN (REV) | 4.5/5.5[114/140] | .25[6.4] PRE-INSUL FEMALE SPADE |
| ORANGE (REV) | 4.5/5.5[114/140] | .25[6.4] PRE-INSUL MALE TAB |
| PURPLE (REV) | 4.5/5.5[114/140] | .25[6.4] PRE-INSUL FEMALE SPADE |
| WHITE (REV) | 4.5/5.5[114/140] | .25[6.4] PRE-INSUL MALE TAB |
| RED | 26.0/28.0[660/711] | SKIN .50[12.70] |
| BLUE | 26.0/28.0[660/711] | SKIN .50[12.70] |
| BLACK | 26.0/28.0[660/711] | SKIN .50[12.70] |
| WHITE | 26.0/28.0[660/711] | SKIN .50[12.70] |
| BROWN/WHITE | 26.0/28.0[660/711] | .25[6.35] FLAG |
| BROWN | 26.0/28.0[660/711] | .25[6.35] FLAG |
| GREEN(GRD) | 12.0/13.0[305/330] | #10 EYELET |

REGAL-BELOIT CORPORATION (RBC) PROVIDES TECHNICAL ASSISTANCE TO OUR CUSTOMERS IN SEVERAL AREAS. SINCE RBC DOES NOT RECEIVE ALL DATA CONCERNING THE USE AND APPLICATION OF THE MOTOR, THE SUITABILITY OF THE MOTOR FOR THE APPLICATION MUST BE DETERMINED BY THE CUSTOMER.

DIMENSIONS WITHOUT TOLERANCES ARE FOR REFERENCE ONLY.

| ENCLOSURE | |
|------------------|------|
| END FRAME - LE | OPEN |
| MAIN FRAME - LE | OPEN |
| END FRAME - OLE | OPEN |
| MAIN FRAME - OLE | OPEN |

| | |
|----------|----------------------|
| CUSTOMER | DISTRIBUTION SERVICE |
|----------|----------------------|

| NAMEPLATE DATA: | EXTERNAL CONNECTION DIAGRAM |
|--|-----------------------------|
| MODEL NO.: F48SQ6L73 CUST. P/N: D1076 HP: 3/4 ROT.: REVERSIBLE RPM: 1075/3 SPD. TYPE: UF FRAME: 48 VOLTS: 208-230 PH: 1 AMPS: 5.5 HZ: 60 INS.: B AMB.: 40° C DUTY: AIR OVER CAP.: 10 MDF/370 V ENCL: OPEN UL LOGO CSA LOGO THERMALLY PROTECTED | |
| D0000607-001 | |

| PERFORMANCE CURVE NO. | TORQUE @ 1075 RPM (25°C) | APPROVED SAMPLE | UL COMPONENT | | CSA | |
|-----------------------|--------------------------|-----------------|--------------|-------|---------|---------|
| | | | FILE # | CCN # | FILE # | CLASS # |
| C22946 | 68.4 OZ. FT. | EX11221 | E46412 | PRGY2 | LR43341 | 4211-01 |

| | | |
|---|-------------------------|------------------|
| DRAWING REVISION BY: J. WILLIAMS | REVISION BY: ANNASUN | DATE: 03-05-2020 |
| ECCO-0182192 | APPROVED BY: KEVIN GONG | DATE: 03-05-2020 |
| ECO DESCRIPTION: @ZONE C2 ADD SPANISH NAMEPLATE | | |
| <small>COPYRIGHT REGAL-BELOIT AMERICA, INC. ALL RIGHTS RESERVED. PROPRIETARY AND CONFIDENTIAL INFORMATION - THIS DOCUMENT IS THE PROPERTY OF REGAL-BELOIT AMERICA, INC. (OWNER) AND CONTAINS OWNER'S PROPRIETARY INFORMATION. ANY REPRODUCTION, COPIATION OR OTHER USE WITHOUT THE WRITTEN PERMISSION OF REGAL-BELOIT AMERICA, INC. IS STRICTLY PROHIBITED. BY RECEIVING IT, YOU AGREE THAT IT, AND/OR ANY PART OF IT, SHALL NOT BE DISCLOSED TO ANY PERSON, CORPORATION OR OTHER ENTITY, EMPLOYEE, AND/OR USER, SOLELY AS EXPRESSLY APPROVED IN WRITING ADVANCE BY OWNER. THIS DOCUMENT SHALL BE RETURNED TO OWNER UPON REQUEST. IT MAY BE SUBJECT TO CERTAIN RESTRICTIONS UNDER APPLICABLE EXPORT CONTROL LAWS AND REGULATIONS.</small> | | |

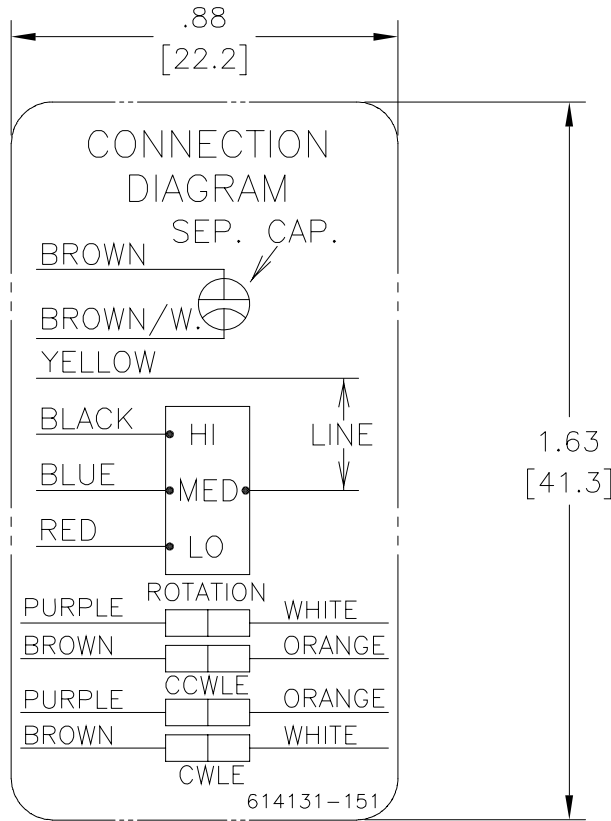
| | | |
|------------------------|------------------|--------------------------------------|
| DRAWN BY: J. WILLIAMS | DATE: 02-08-1991 | DESCRIPTION: MODEL-RFHP-48FR OUTLINE |
| APPROVED BY: M. FRENCH | DATE: 02-11-1991 | MATERIAL: - |
| PROCESS/FINISH: - | SIZE: C | DWG NO: D1076 |
| THIRD ANGLE PROJECTION | SIZE: C | SHEET: 1 |

Uncontrolled Copy

| | | | | | |
|-----|---------|-----------|------------|--------------|------------|
| REV | ECO | REV BY | DATE | APPD | DATE |
| C | 0016999 | A. NAJERA | 03-17-2011 | M. ARGUELLES | 03-17-2011 |

NOTES:

1. FOR USE WITH 614129 NAMEPLATE BLANK
2. - - - - - INDICATES DIMENSIONAL LIMITS.
3. DIE TO BE MADE FROM MASTER SUPPLIED BY A.O. SMITH CORP.
4. DIE MUST PRODUCE A LEGIBLE IMPRESSION.



GEOMETRIC CHARACTERISTICS & SYMBOLS

- FLATNESS
- STRAIGHTNESS
- ANGULARITY
- PERPENDICULARITY (SQUARENESS)
- PARALLELISM
- ROUNDNESS (CIRCULARITY)
- CYLINDRICITY
- PROFILE OF ANY SURFACE
- PROFILE OF ANY LINE
- RUNOUT
- TRUE POSITION
- CONCENTRICITY
- SYMMETRY

UNLESS OTHERWISE SPECIFIED DIM. TOLERANCES ARE AS FOLLOWS:

| | | | | |
|------|------|-------|--------|--------|
| | X | XX | XXX | XXXX |
| INCH | ±.1 | ±.02 | ±.005 | ±.0005 |
| mm | ±0.5 | ±0.13 | ±0.013 | |

ANG. ±.50 DEG
 REMOVE BURRS & BREAK SHARP EDGES:
 INCH .003-.015 mm 0.1-0.4
 CORNER FILLETS TO:
 INCH .020 mm 0.5
 MACHINE SURFACES:
 INCH 125 mm 3.2
 METRIC DIMS. SHOWN IN [BRACKETS]

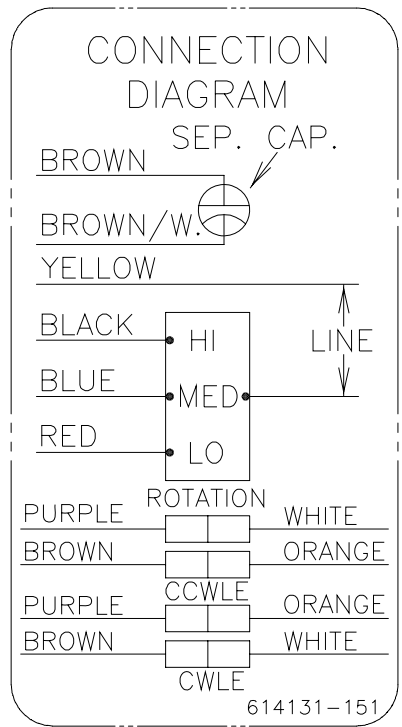
| | | |
|---|-----|-------------------------------------|
| DR BY: | JMW | 09-29-89 |
| APPD: | | |
| THIRD ANGLE PROJECTION | | EDS DATE 02-22-2008 FORMAT REV F |
| CONFIDENTIAL: THIS DRAWING AND ITS INFORMATION ARE THE EXCLUSIVE AND CONFIDENTIAL PROPERTY OF A.O. SMITH CORP. AND ARE NOT TO BE DISCLOSED, DUPLICATED, DISTRIBUTED OR OTHERWISE USED WITHOUT THE WRITTEN CONSENT OF A.O. SMITH CORP. -ALL RIGHTS RESERVED. ASME Y14.5M 1994 | | |

| | | |
|---------------------------------------|----------------------|---|
| | | ELECTRICAL PRODUCTS COMPANY <small>A DIVISION OF A.O. SMITH CORPORATION</small> |
| DESCRIPTION CONN DIAGRAM NAMEPLATE | | |
| SIZE A | DWG NO 614131-151 | |
| SCALE NONE | | SHEET 1 |

| | | | | | |
|-----------|---------|---------------|------------|---------------|------------|
| REVISION: | ECO | REVISADO POR: | FECHA: | APROBADO POR: | FECHA: |
| C | 0016999 | A. NAJERA | 03-17-2011 | M. ARGUELLES | 03-17-2011 |

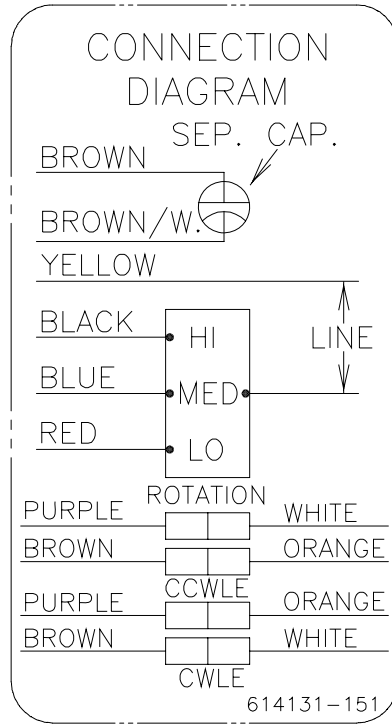
NOTAS:

1. PARA USAR CON LA PLACA DE DATOS BLANCA 614129
2. — — — — INDICA LOS LIMITES DIMENSIONALES.
3. EL DADO ES HECHO A PARTIR DEL ABASTECIMIENTO MAESTRO POR A.O. SMITH CORP.
4. EL DADO TIENE QUE SER FABRICADO CON UNA IMPRESION LEGIBLE.



| | | | | |
|---|--|---|---|--|
| CARACTERISTICAS DE GEOMETRIA Y SIMBOLOS Z PLANICIDAD — RECTITUD ∠ ANGULARIDAD ⊥ PERPENDICULARIDAD (A ESCUADRA) // PARALELISMO ○ REDONDEZ (CIRCULARIDAD) ∅ CILINDRICIDAD △ PERFIL DE CUALQUIER SUPERFICIE ∩ PERFIL DE CUALQUIER LINEA / VARIACION ⊕ POSICION REAL ⊙ CONCENTRICIDAD = SIMETRIA | A MENOS QUE SE ESPECIFIQUE DE OTRA MANERA, LAS TOLERANCIAS DE LAS DIMS; SON LAS SIGUIENTES: PULG ±.1 ±.02 ±.005 ±.0005 mm ±0.5 ±0.13 ±0.013 ANG. ±.50 GRADOS ELIMINAR REBABAS Y ORILLAS FILOSAS DEL BORDE. PULG .003-.015 mm 0.1-0.4 FILETEAR ESQUINA: PULG .020 mm 0.5 MAQUINAR SUPERFICIES PULG 125 mm 3.2 DIMS METRICAS MOSTRADAS [PARENTESIS] | DIBUJADO POR: JMW 09-29-89 | <p>ELECTRICAL PRODUCTS COMPANY A DIVISION OF A. O. SMITH CORPORATION</p> | |
| | APROBADO POR: | FECHA EDS: 02-22-2008 REV. FORMATO: F | | DESCRIPCION: CONN DIAGRAM NAMEPLATE |
| | TERCER ANGULO DE PROYECCION | TAMAÑO: A NUMERO DE DIBUJO: 614131-151 | | ESCALA: NONE HOJA: 1 |
| | CONFIDENCIAL: ESTE DIBUJO Y SU INFORMACION SON PROPIEDAD DE USO EXCLUSIVO Y CONFIDENCIAL DE A.O.SMITH CORP. Y NO DEBERAN SER REVELADOS, DUPLICADOS, DISTRIBUIDOS O USARSE DE OTRA MANERA SIN EL CONSENTIMIENTO ESCRITO DE A.O. SMITH CORP. -TODOS LOS DERECHOS RESERVADOS.ASME Y14.5M 1994 | | | |

| | | | | | |
|----|---------|-----------|------------|--------------|------------|
| 版本 | ECO | 编制 | 日期 | 批准 | 日期 |
| C | 0016999 | A. NAJERA | 03-17-2011 | M. ARGUELLES | 03-17-2011 |



- 形位公差
- 平面度
- 直线度
- ∠ 倾斜度
- ⊥ 垂直度
- ∥ 平行度
- 圆度
- ⊘ 圆柱度
- ⊖ 面轮廓度
- ⊖ 线轮廓度
- ⊖ 圆跳动
- ⊖ 位置度
- ⊖ 同轴度
- ⊖ 对称度

除另有注明
尺寸公差如下:

英寸 X XX XXX XXXX
 毫米 ±.1 ±.02 ±.005 ±.0005
 毫米 ±0.5 ±0.13 ±0.013

角度 ±.50 度
 清理毛刺和尖棱
 英寸 .003-.015 毫米 0.1-0.4

内圆角
 英寸 .020 毫米 0.5
 表面粗糙度
 英制 125 米制 3.2

米制尺寸显示在 []

| | | |
|---|-----|---------------------------------|
| 绘图: | JMW | 09-29-89 |
| 批准: | | |
| 第三角投影 | | 图纸格式发布日期 02-22-2008 图纸格式版本 F |
| 机密: 本图纸及相关信息所有权归A. O. SMITH公司所有。未经A. O. SMITH公司书面授权, 不得泄露、复制、传播或作其他用途。一版权所有 | | |
| ASME Y14.5M 1994 | | |

| | |
|--|------------------|
| ELECTRICAL PRODUCTS COMPANY <small>A DIVISION OF A. O. SMITH CORPORATION</small> | |
| 名称 CONN DIAGRAM NAMEPLATE | |
| 图幅 A | 图号 614131-151 |
| 比例 NONE | 页号 1 |