

PRODUCT INFORMATION PACKET

FASCO®

Model No: D1074
Catalog No: D1074
1/20 HP OEM Replacement Motor, 1075 RPM, 3 Speed, 115 Volts, 42 Frame, OAO
HVAC/R OEM Replacement Motors



Regal and Fasco are trademarks of Regal Beloit Corporation or one of its affiliated companies.
©2020 Regal Beloit Corporation, All Rights Reserved. MC017097E

REGAL



Nameplate Specifications

Output HP	1/20 Hp	Output KW	0.04 kW
Frequency	60 Hz	Voltage	115 V
Current	1.25 A	Speed	1075 rpm
Service Factor	1	Phase	1
Duty	Continuous	Insulation Class	B
Frame	42	Enclosure	Totally Enclosed
Thermal Protection	Automatic	Ambient Temperature	40 °C
UL	Recognized	CSA	Y
CE	N		

Technical Specifications

Electrical Type	Permanent Split Capacitor	Starting Method	Across The Line
Poles	6	Rotation	Counterclockwise Lead End
Mounting	Bracket	Drive End Bearing	Sleeve
Opp Drive End Bearing	Sleeve	Frame Material	Rolled Steel
Shaft Type	Flat	Overall Length	10.87 in
Frame Length	3.38 in	Shaft Diameter	0.500 in
Shaft Extension	7 in		
Outline Drawing	7187037500_S001	Connection Drawing	SEE OUTLINE

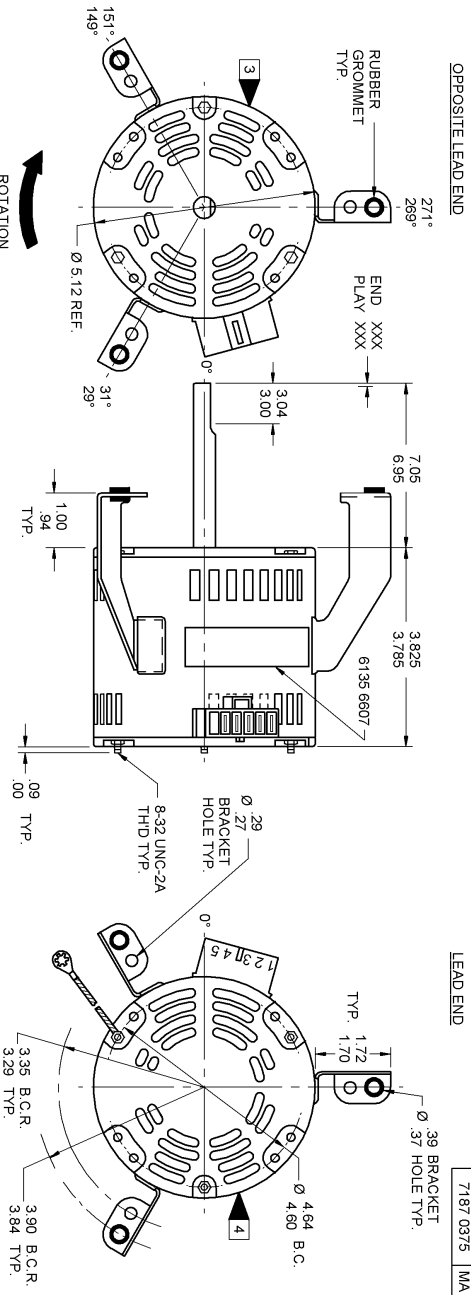
This is an uncontrolled document once printed or downloaded and is subject to change without notice. Date Created:22/09/2020

- NOTES:
1. STATOR LOCATION DIMENSION IS FROM SLEEVE EDGE (OPPOSITE LEAD END) TO STATOR STEEL 1.041.02
 2. STATOR STACK 1.14".
 3. THRU AIR SPACING BETWEEN WIRE AND METAL .094 MIN.
 4. THE BOLT TORQUE TOLERANCE 13 - 17 IN. LBS.
 5. PRESS STATOR SO THAT MODULAR CONNECTOR LEADS EXT 65° COMLE FROM LEAD NOTCH IN SLEEVE AND WELD SEAM IS LINED UP APPROXIMATELY AS SHOWN.
 6. TWIST THE MODULAR CONNECTOR PRIOR TO INSERTING INTO THE LEAD NOTCH WITH LABELED SIDE TOWARD LEAD END SHIELD AND PLACE EXCESS LEAD MATERIAL BETWEEN COILS AND SLEEVE. THE TWISTED BUNDLE WILL GATHER LEADS TOGETHER LOOSELY AND HELP KEEP THE LEADS OUT OF THE STATOR I.D.
 7. SALES TO SPECIFY ON P.O. WHICH PACK TO USE.
 8. ASSEMBLE SPRING .0051 1620, IN OPP. L.E. END SHIELD. ASSEMBLE BEARING SPACER. 0006 1226, IN OPPOSITE END SHIELD.

PRODUCTION TEST AT IDLE		PERFORMANCE TEST		115 VOLTS 60 HZ		1 PH 1/20 HP		CAP. 7.5 MFD 320 VAC				
115 VOLTS 60 HZ	MOTOR SPEED	IDLE RPM	LOADED RPM	LOADED AMP	LOCKED AMP	BREAK OZ/IN						
AMP	WATT	AMP	WATT	WATT	WATT	WATT	WATT	WATT	WATT			
66 — .54	70.4 — 57.6	1188	.6	64	74.0	1075	1.0	113	47.0	1.9	204	100.0
33 — .27	36.2 — 28.8	1183	.3	32	32.0	1075	.5	52	20.0	.9	92	43.0
22 — .18	26.3 — 20.7	1177	.2	23	19.0	1075	.3	32	11.0	.6	56	26.0

HI-POT TEST 2000 VOLTS

MAX LEAKAGE CURRENT 5 mA



GROUND LEAD DATA: 18 GA. 2/64" INS. 105° C THERMO. GRN/VEL. 13.00"/12.00" LONG WITH A #10 SERRATED RING TERMINAL.

SPECIAL INSTRUCTIONS: SHAFT IS BONDERIZED. ROTOR IS RUSTPROOFED. EYELETS PACKED IN CARTON WITH MOTOR. PAMPHLET PACKED WITH MOTOR.

MOTORS PACKED MAX. PER SKID: PALLET PACK, 32 CARTON PACK, TRAY PACK

CUSTOMER: FASCO DISTRIBUTING CO.

PART NUMBER: D1074

APPLICATION: DIST. SALES

FINISH COLOR: GRAY

MOTOR WEIGHT: LBS.

ENVIRONMENT: WET

INSULATION CLASS: B

FINISH COLOR	MOTOR WEIGHT	ENVIRONMENT	INSULATION CLASS	MOTOR TYPE	P.S.C.	MOTOR NUMBER	REV.
B	LA FR A S C E B A R	WET	B	00 87 33 V 05 AK 7 0 1 0	P.S.C.	7187 0375	0

TERMINALLY PROTECTED CONNECTION DIAGRAM CAPACITOR

1 - HI

2 - MED

3 - LO

4 - LINE

5 - 10

FASCO INDUSTRIES, INC. MOTOR DIVISION ASSEMBLED IN MEXICO

V-115 HZ 60 PH 1

INS CL. B 7.5 HP 32 TAP

AMP 1.25 40°C AFB TYPE U8281 NP 7187-0375

RPM 1075 (3 SPD) SHIELDED BALL BEARING

MODEL DATE BAR CODE AREA PER 8882 6003

6135 6607 R REV. 0

LOCATE C OF NAMEPLATE ON C OF SLEEVE TO READ RIGHT FROM LEAD END OF MOTOR CENTER AT 30° CWL. SIZE 3.50 X 1.00