

PRODUCT INFORMATION PACKET

FASCO®

Model No: D1071
Catalog No: D1071
1/6 HP OEM Replacement Motor, 1100 RPM, 208/230 Volts, 42 Frame, TEAO
HVAC/R OEM Replacement Motors



Regal and Fasco are trademarks of Regal Beloit Corporation or one of its affiliated companies.
©2020 Regal Beloit Corporation, All Rights Reserved. MC017097E

REGAL



Nameplate Specifications

Output HP	1/6 Hp	Output KW	0.13 kW
Frequency	60 Hz	Voltage	208/230 V
Current	0.99 A	Speed	1100 rpm
Service Factor	1	Phase	1
Duty	Continuous	Insulation Class	B
Frame	42	Enclosure	Open Air Over
Thermal Protection	Automatic	Ambient Temperature	40 °C
UL	Recognized	CSA	Y
CE	N		

Technical Specifications

Electrical Type	Permanent Split Capacitor	Starting Method	Across The Line
Poles	6	Rotation	Reversible
Mounting	Bracket	Drive End Bearing	Ball
Opp Drive End Bearing	Ball	Frame Material	Rolled Steel
Shaft Type	Flat	Overall Length	6.02 in
Frame Length	3.38 in	Shaft Diameter	0.500 in
Shaft Extension	2.2 in		
Outline Drawing	7187001007_S001	Connection Drawing	SEE OUTLINE

This is an uncontrolled document once printed or downloaded and is subject to change without notice. Date Created:22/09/2020

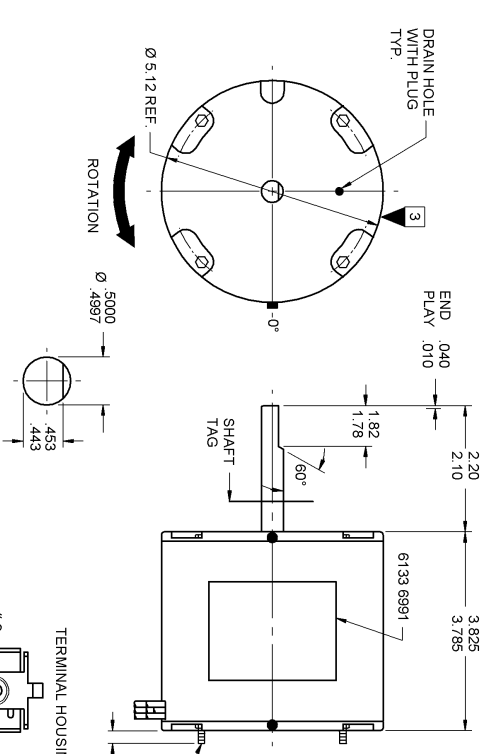
- NOTES**
1. STATOR LOCATION DIMENSION IS FROM SLEEVE EDGE (OPPOSITE LEAD END) TO STATOR STEEL 1.0391.01.
 2. STATOR STACK 1.18".
 3. THRU AIR SPACING BETWEEN WIRE AND METAL .094 MIN.
 4. THE BOLT TORQUE TOLERANCE IS 13 - 17 IN. LBS.
 5. FOR WASHER SET-UP, SEE CHART C600 0279, DETAIL "A".
 6. REMOVE PAPER TUBE FROM BROWN LEAD TERMINAL BEFORE ASSEMBLING TERMINAL HOUSING, 8803 4021, AS FOLLOWS: BROWN LEAD IN #2.
 7. CONNECT THE TWO YELLOW REV. LEADS TOGETHER AND THE TWO PURPLE REV. LEADS TOGETHER. THIS WILL GIVE CW/LE ROTATION.
 8. ASSEMBLE SHAFT TAG, 6121 6024, ON SHAFT LAST WITH PRINTED SIDE AWAY FROM FACE OF MOTOR.
 9. SALES TO SPECIFY ON P.O. WHICH PACK TO USE.

ECO	REV.	DATE	SPEC/CHECK
631580	4	8-7-03	LDO/LDC
638205	5	05-28-08	GAE/GAE
639162	6	3-6-09	MKRAMKR
641613	7	10-1-10	LDO/LDC

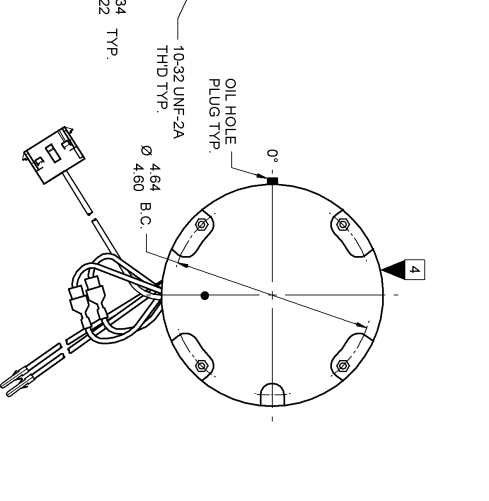
71xx xxxxZ	71xx xxxxC	71xx xxxx,R
		<p>A. SEE PACKAGING MANUAL PAGE 2 FOR PACKAGING PROCEDURE.</p> <p>1 MOTOR/CARTON: 32 MOTOR/LAYER: 6 LAYERS/PALLET: 192 MOTOR\$/ PALLET.</p> <p>B. SEE DRAWING 8785 6079 SH. 1 FOR PALLET LAYOUT.</p> <p>C. PLACE INSTRUCTION SHEET, 6121 6012, IN CARTON.</p> <p>D. CENTER LABEL, 6119 8944, ON END OF CARTON.</p> <p>E. PLACE PAMPHLET, 6122 4579, IN CARTON WITH MOTOR.</p>

PRODUCTION TEST AT IDLE				PERFORMANCE TEST				LOADED				LOCKED			
230 VOLTS 60 HZ				230 VOLTS 60 HZ				1 PH 1/6 HP				CAP. 5 MFD 370 VAC			
AMP	WATT	MOTOR SPEED	HP	IDLE AMP	WATT	LOADING RPM	HP	LOADING AMP	WATT	LOADING RPM	HP	LOADING AMP	WATT	BREAK OZ/IN	
.50	.42	106.0	—	90.0	90	150	1100	.87	199	69	1.71	359	197		
TYPICAL PERFORMANCE SHOWN FOR CW/LE ROTATION															
HI-POT TEST 2000 VOLTS															
MAX LEAKAGE CURRENT 5 mA															

OPPOSITE LEAD END



LEAD END



LEAD DATA: 18 GA. 2/64" INS. 105° C THERMO. BROWN CAP. LEAD. RED AND BLACK LINE LEADS 44.00"±.02" LONG TO END OF 084 PIN TERMINALS. 2 YELLOW AND 2 PURPLE REVERSING LEADS 8.00"±.02" LONG WITH 1/4" PRE-INSULATED Q.C. TERMINALS.

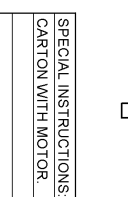
7187 0010 = MADE IN U.S.A.
 7187 0010R = ASSEMBLED IN MEXICO

TERNALLY PROTECTED
 MODEL D1071

FASCO FASCO INDUSTRIES, INC.
 MOTOR DIVISION

V. 208/230 HP 1/6 AMP .99 RPM 1100
 HZ 60 TEAO INS CL. B
 PH 1 CAP 5 MFD 370 VAC
 ROT 370 VAC
 40° C AMB
 NO. 7187-0010

CONNECTION DIAGRAM
 RED WIRE ——— CAP. LINE
 BLACK ——— LINE



SPECIAL INSTRUCTIONS: SHAFT IS BONDZERED. INSTRUCTION SHEET TO BE PACKED IN CARTON WITH MOTOR. PAMPHLET PACKED WITH MOTOR.

MOTORS PACKED MAX. PER SKID. PALLET PACK. 192 CARTON PACK. TRAY PACK

CUSTOMER: FASCO DISTRIBUTING CO. WANTED PERMISSION OF FASCO IND. INC., ELDON MO. FASCO INDUSTRIES, INC.

PART NUMBER: D1071 MOTOR DIVISION ELDON PLANT

APPLICATION: DIST. SALES MOTOR TYPE P.S.C.

FINISH COLOR: GRAY MOTOR WEIGHT: LBS.

ENVIRONMENT: DAMP

INSULATION CLASS: B

MOTOR NUMBER	REV.
7187 0010	7

SAFETY WARNING
 THIS MOTOR MUST BE REWOUND IN ACCORDANCE WITH THE REWINDING INSTRUCTIONS ON THE REWINDING MANUAL DUE TO ELECTRICAL SHOCK.

DATE BAR CODE AREA PER 8882 6003

LOCATE C OF NAMEPLATE ON C OF SLEEVE TO READ RIGHT FROM LEAD END OF MOTOR CENTER AT 0°.

SIZE 3.50 X 2.00