

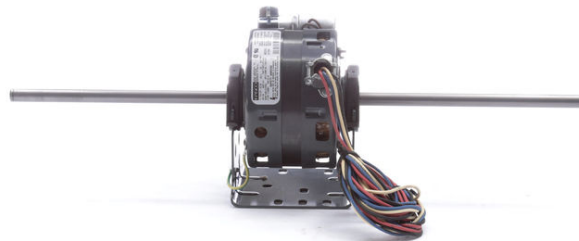
PRODUCT INFORMATION PACKET

FASCO[®]

Model No: D1059

Catalog No: D1059

1/6 HP OEM Replacement Motor, 1450 RPM, 3 Speed, 115-127 Volts, 42 Frame, OAO
HVAC/R OEM Replacement Motors



Regal and Fasco are trademarks of Regal Beloit Corporation or one of its affiliated companies.
©2020 Regal Beloit Corporation, All Rights Reserved. MC017097E

REGAL



Nameplate Specifications

Output HP	1/6 Hp	Output KW	0.13 kW
Frequency	60 Hz	Voltage	115-127 V
Current	2.3 A	Speed	1450 rpm
Service Factor	1	Phase	1
Duty	Continuous	Insulation Class	B
Frame	42	Enclosure	Open Air Over
Thermal Protection	Automatic	Ambient Temperature	40 °C
UL	Recognized	CSA	Y
CE	N		

Technical Specifications

Electrical Type	Permanent Split Capacitor	Starting Method	Across The Line
Poles	4	Rotation	Clockwise Shaft End
Mounting	Resilient Base	Drive End Bearing	Sleeve
Opp Drive End Bearing	Sleeve	Frame Material	Na
Shaft Type	Flat	Overall Length	21.02 in
Shaft Diameter	0.500 in	Shaft Extension	8.75 in
Outline Drawing	7184037604_S001	Connection Drawing	SEE OUTLINE

This is an uncontrolled document once printed or downloaded and is subject to change without notice. Date Created:22/09/2020

Uncontrolled Copy

NOTES

- THRU AIR SPACING BETWEEN WIRE AND METAL .024 MIN.
- TIE BOLT TOLERANCE 7 - 12 IN. LBS.
- FOR WASHER SET-UP, SEE CHART C600 0279, DETAIL "A".
- SALES TO SPECIFY ON P.O. WHICH PACK TO USE.

ECO	REV.	DATE	SPEC/CHK
642614	4	11-29-11	GA/E/GE
633295	1	7-27-04	JAK/RWS
638845	2	11-19-08	MK/RMKR
639331	3	03-31-09	GA/E/GE

A. SEE PACKAGING MANUAL PAGE 2 FOR PACKAGING PROCEDURE.

1 MOTOR/CARTON;
10 MOTORS/LAYER;
5 LAYERS/PALLET;
50 MOTORS/PALLET.

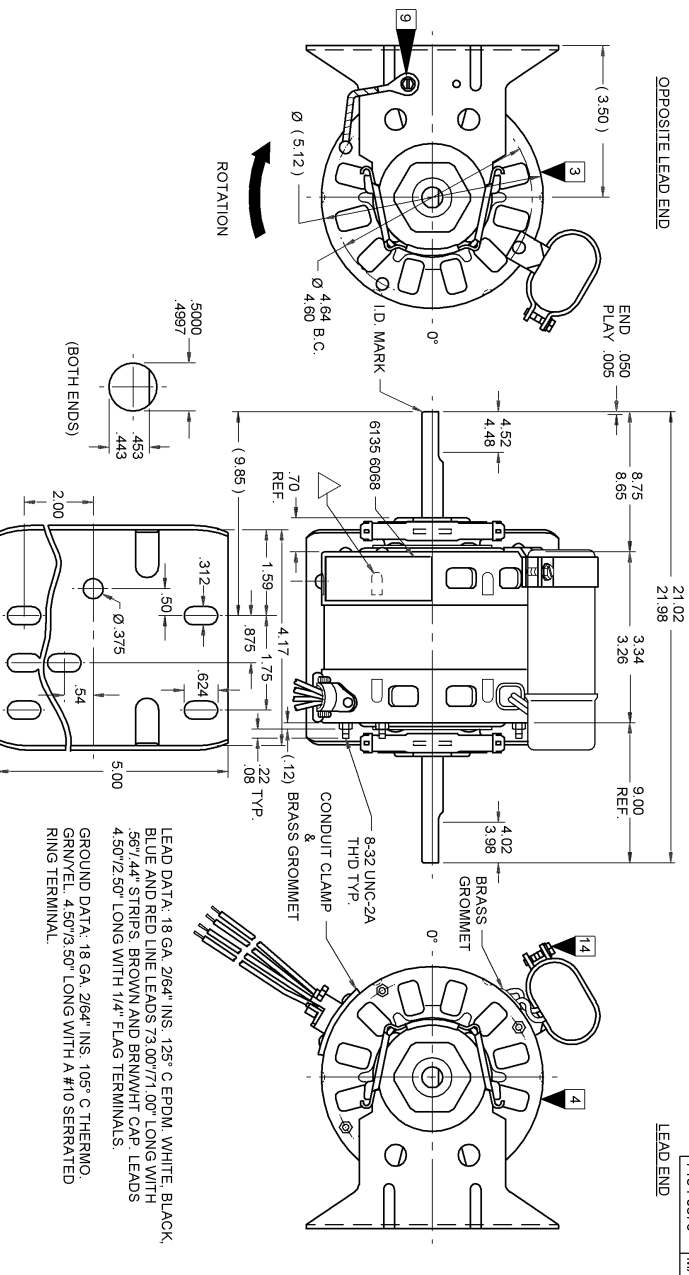
- B. SEE DRAWING 8786 6079 SH. 2 FOR PALLET LAYOUT.
- C. CENTER LABEL 6120 6689, ON END OF CARTON.
- D. PLACE PAMPHLET, 6122 4579, IN CARTON WITH MOTOR.

71xx xxxxZ	71xx xxxxC	71xx xxxx,R
------------	------------	-------------

PRODUCTION TEST AT IDE 115 VOLTS 60 HZ		PERFORMANCE TEST 115 VOLTS 60 HZ 1 PH 1/6 HP CAP. 5 MFD 370 VAC											
AMP	WATT	IDLE		LOADED			LOCKED						
		AMP	WATT	OZ/IN	RPM	AMP	WATT	AMP	OZ/IN				
1.12	.92	101.2	82.8	1.02	92	114	1450	2.37	260	60	3.87	411	125
.59	.49	66.0	54.0	.54	60	59	1450	1.35	146	29	2.13	219	61
.24	.20	27.5	22.5	.22	25	16	1450	.46	48	8	.73	72	18

HI-POT TEST 2000 VOLTS

MAX LEAKAGE CURRENT 5 mA



FASCO MOTOR DIVISION
ASSEMBLED IN MEXICO

ROTATION

THIS MOTOR MUST BE GROUNDED IN ACCORDANCE WITH THE NATIONAL ELECTRICAL CODE (NEC) ARTICLE 250-180. CHECK THE TERMINAL BOX FOR THE GROUNDED TERMINAL.

SAFETY WARNING
THIS MOTOR MUST BE GROUNDED IN ACCORDANCE WITH THE NATIONAL ELECTRICAL CODE (NEC) ARTICLE 250-180. CHECK THE TERMINAL BOX FOR THE GROUNDED TERMINAL.

DATE/BA. CODE AREA PER 8892 6003

6135 6068 R REV. 2

THERMALLY PROTECTED

CONNECTION DIAGRAM
RESISTOR
CAPACITOR
LINE
REPLACEMENT PARTS LIST

MODEL D1059
REPL. BLK-HI
REPL. BLK-MED
REPL. BLK-LO

INS. OL. B
INS. OL. B
INS. OL. B

TYPE UT18481
RPM 1450 (3 SPD)
HZ 60
AMP 2.40
NO. 7184-0376

YD 145-127
N/A
PH 1
ROT
N/A

LOCATE NAMEPLATE .05 FROM EDGE OF OPP. LEAD END COVER TO READ
RIGHT FROM LEAD END OF MOTOR CENTER AT 40° CW/LE
SIZE 3.50 X 1.00

SPECIAL INSTRUCTIONS: FLATS TO BE PARALLEL WITHIN ±20°		SHAFT IS BONDERIZED, ROTOR IS RUSTPROOFED. LANCE MUST BE COMPLETELY COVERED BY NAMEPLATE, PAMPHLET PACKED WITH MOTOR.																												
MOTORS PACKED MAX. PER SKID:		PALLET PACK: 50 CARTON PACK, TRAY PACK																												
CUSTOMER: FASCO DISTRIBUTING CO.		FASCO INDUSTRIES, INC.																												
PART NUMBER: D1059		MOTOR DIVISION ELDON PLANT																												
APPLICATION: DIST. SALES		MOTOR TYPE: P.S.C.																												
FINISH COLOR: GRAY		MOTOR WEIGHT: 9.5 LBS.																												
ENVIRONMENT: WET		INSULATION CLASS: B																												
<table border="1"> <tr> <th>MOTOR TYPE</th> <th>A</th> <th>B</th> <th>C</th> <th>D</th> <th>E</th> <th>F</th> </tr> <tr> <td>LA</td> <td>FR</td> <td>AS</td> <td>CS</td> <td>EE</td> <td>BB</td> <td>AA</td> </tr> <tr> <td>00</td> <td>84</td> <td>12</td> <td>V</td> <td>04</td> <td>AS</td> <td>7 8 10</td> </tr> </table>		MOTOR TYPE	A	B	C	D	E	F	LA	FR	AS	CS	EE	BB	AA	00	84	12	V	04	AS	7 8 10	<table border="1"> <tr> <th>MOTOR NUMBER</th> <th>REV.</th> </tr> <tr> <td>7184 0376</td> <td>R</td> </tr> <tr> <td></td> <td>4</td> </tr> </table>		MOTOR NUMBER	REV.	7184 0376	R		4
MOTOR TYPE	A	B	C	D	E	F																								
LA	FR	AS	CS	EE	BB	AA																								
00	84	12	V	04	AS	7 8 10																								
MOTOR NUMBER	REV.																													
7184 0376	R																													
	4																													

If Printed, this is an Uncontrolled Document.