

# PRODUCT INFORMATION PACKET

FASCO®

Model No: D1055

Catalog No: D1055

1/12 HP OEM Replacement Motor, 1375 RPM, 3 Speed, 115-127 Volts, 42 Frame, OAO  
HVAC/R OEM Replacement Motors



Regal and Fasco are trademarks of Regal Beloit Corporation or one of its affiliated companies.  
©2020 Regal Beloit Corporation, All Rights Reserved. MC017097E

REGAL



**Nameplate Specifications**

Output HP	1/12 Hp	Output KW	0.06 kW
Frequency	60 Hz	Voltage	115-127 V
Current	1.4 A	Speed	1375 rpm
Service Factor	1	Phase	1
Duty	Continuous	Insulation Class	B
Frame	42	Enclosure	Open Air Over
Thermal Protection	Automatic	Ambient Temperature	40 °C
UL	Recognized	CSA	Y
CE	N		

**Technical Specifications**

Electrical Type	Permanent Split Capacitor	Starting Method	Across The Line
Poles	4	Rotation	Clockwise Shaft End
Mounting	Resilient Base	Drive End Bearing	Sleeve
Opp Drive End Bearing	Sleeve	Frame Material	Na
Shaft Type	Flat	Overall Length	21.77 in
Shaft Diameter	0.500 in	Shaft Extension	9.125 in
Connection Drawing	SEE OUTLINE	Outline Drawing	7184037504_S001

This is an uncontrolled document once printed or downloaded and is subject to change without notice. Date Created:22/09/2020

NOTES

1. THRU AIR SPACING BETWEEN WIRE AND METAL .094 MIN.
2. THE BOLT TOLERANCE 7 - 12 IN. LBS.
3. FOR WASHER SET-UP SEE CHART C600 0279, DETAIL "A".
4. SALES TO SPECIFY ON P.O. WHICH PACK TO USE.

Uncontrolled Copy

ECO	REV.	DATE	SPEC/CHK
640679	4	10-20-09	MKR/MKR
633293	1	7-27-04	JAK/RWS
638629	2	09-17-08	GAE/GAE
639203	3	3-12-09	MKR/MKR

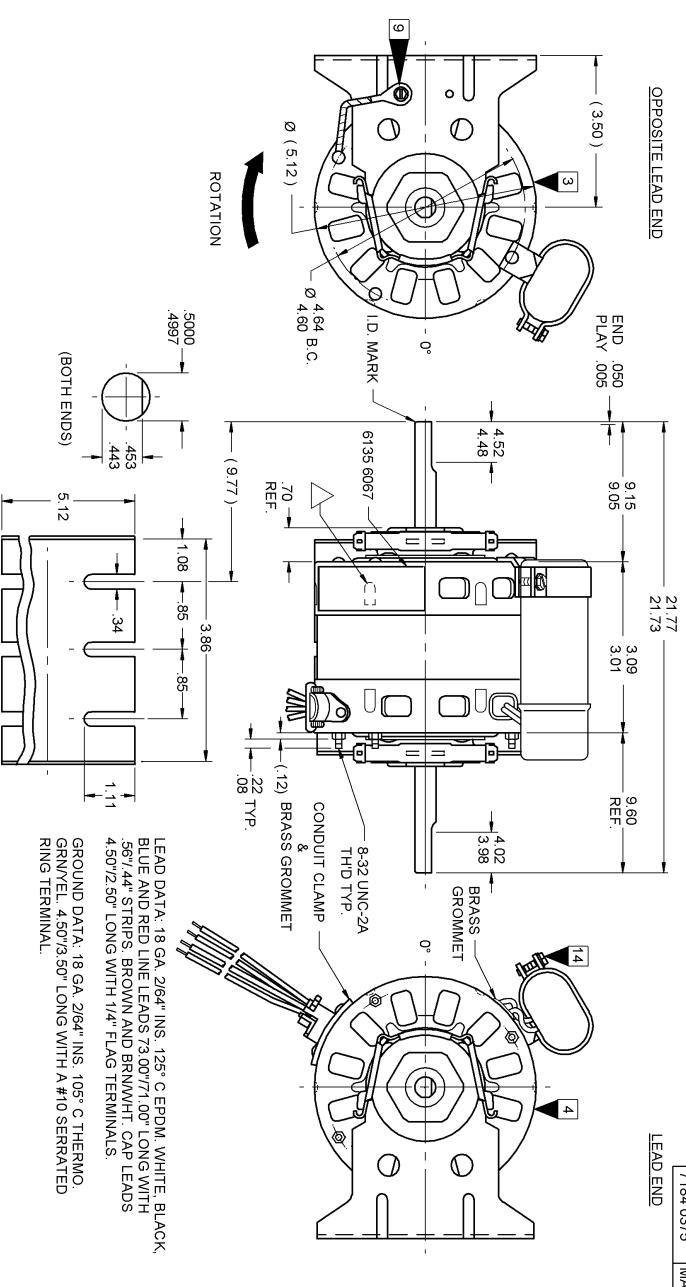
A. SEE PACKAGING MANUAL PAGE 2 FOR PACKAGING PROCEDURE.

- 1 MOTOR/CARTON;
- 10 MOTORS/LAYER;
- 5 LAYERS/PALLET;
- 50 MOTORS/PALLET.

- B. SEE DRAWING 8786 6079 SH. 2 FOR PALLET LAYOUT.
- C. CENTER LABEL, 6120 6640, ON END OF CARTON.
- D. PLACE PAMPHLET, 6122 4579, IN CARTON WITH MOTOR.

PRODUCTION TEST AT IDLE 115 VOLTS 60 HZ	MOTOR SPEED	PERFORMANCE TEST 115 VOLTS 60 HZ 1 PH 1/12 HP				CAP. 5 MFD 320 VAC	BREAK				
		IDLE	LOADED	LOCKED	BREAK						
AMP	WATT	AMP	WATT	OZ/IN	RPM	AMP	WATT	OZ/IN			
1.27 — 1.04	88.0 — 72.0	1.15	80	74	1375	1.62	174	46	2.38	262	81.0
.36 — .30	40.7 — 33.3	.33	28	28	1375	.65	68	17	1.04	110	32
.29 — .23	17.6 — 14.4	.19	16	12	1375	.35	36	9	.57	57	15

HI-POT TEST 2000 VOLTS MAX LEAKAGE CURRENT 5 MA	MOTOR SPEED	LOADED				BREAK					
		AMP	WATT	OZ/IN	RPM						
	HIGH	1.15	80	74	1375	1.62	174	46	2.38	262	81.0
	MED.	.33	28	28	1375	.65	68	17	1.04	110	32
	LOW	.19	16	12	1375	.35	36	9	.57	57	15



7184 0375 - MADE IN U.S.A.  
7184 0375R - ASSEMBLED IN MEXICO

**FASCO** FASCO INDUSTRIES, INC. THERMALLY PROTECTED MOTOR DIVISION

VS 145-127 HZ 60 PH 1 ROT  
 HP 1.1275 (3 SPD) 40° C AMP 40  
 RPM 1375 (3 SPD) 40° C AMP NO. 7184-0375  
 TYPE U18481 INS. CL. B  
 MODEL D1055  
 RECD. LINE

**SAFETY WARNING**  
 THIS MOTOR MUST BE GROUNDED IN ACCORDANCE WITH THE NATIONAL ELECTRICAL CODE (NEC) AND THE LOCAL ELECTRICAL CODES.  
 DATE/FAB. CODE AREA PER 8892 6003

6135 6067 R REV. 1

LOCATE EDGE OF NAMEPLATE .05 FROM EDGE OF OPP. LEAD END COVER TO READ RIGHT FROM LEAD END OF MOTOR CENTER AT 40° CW/LE.

SIZE 3.50 X 1.00

**SPECIAL INSTRUCTIONS:** FLATS TO BE PARALLEL WITHIN ±20°  
 SHAFT IS BONDZERIZED, ROTOR IS RUSTPROOFED. △ LANCE MUST BE COMPLETELY COVERED BY NAMEPLATE. PAMPHLET PACKED WITH MOTOR.

**MOTORS PACKED MAX. PER SKID:** PALLET PACK, 50 CARTON PACK, TRAY PACK  
 CUSTOMER: FASCO DISTRIBUTING CO. FASCO INDUSTRIES, INC.  
 PART NUMBER: D1055 MOTOR DIVISION  
 APPLICATION: DIST. SALES ELDON PLANT  
 FINISH COLOR: GRAY P.S.C.  
 MOTOR WEIGHT: LBS.  
 ENVIRONMENT: WET  
 INSULATION CLASS: B

MOTOR TYPE	MOTOR NUMBER	REV.
B LA FR A S C E B A A R	7184 0375	4