

# PRODUCT INFORMATION PACKET

FASCO®

Model No: D1049  
Catalog No: D1049  
1/20 HP OEM Replacement Motor, 1075 RPM, 3 Speed, 265 Volts, 42 Frame, OAO  
HVAC/R OEM Replacement Motors



Regal and Fasco are trademarks of Regal Beloit Corporation or one of its affiliated companies.  
©2020 Regal Beloit Corporation, All Rights Reserved. MC017097E

REGAL



**Nameplate Specifications**

Output HP	1/20 Hp	Output KW	0.04 kW
Frequency	60 Hz	Voltage	265 V
Current	0.40 A	Speed	1075 rpm
Service Factor	1	Phase	1
Duty	Continuous	Insulation Class	B
Frame	42	Enclosure	Open Air Over
Thermal Protection	Automatic	Ambient Temperature	40 °C
UL	Recognized	CSA	Y
CE	N		

**Technical Specifications**

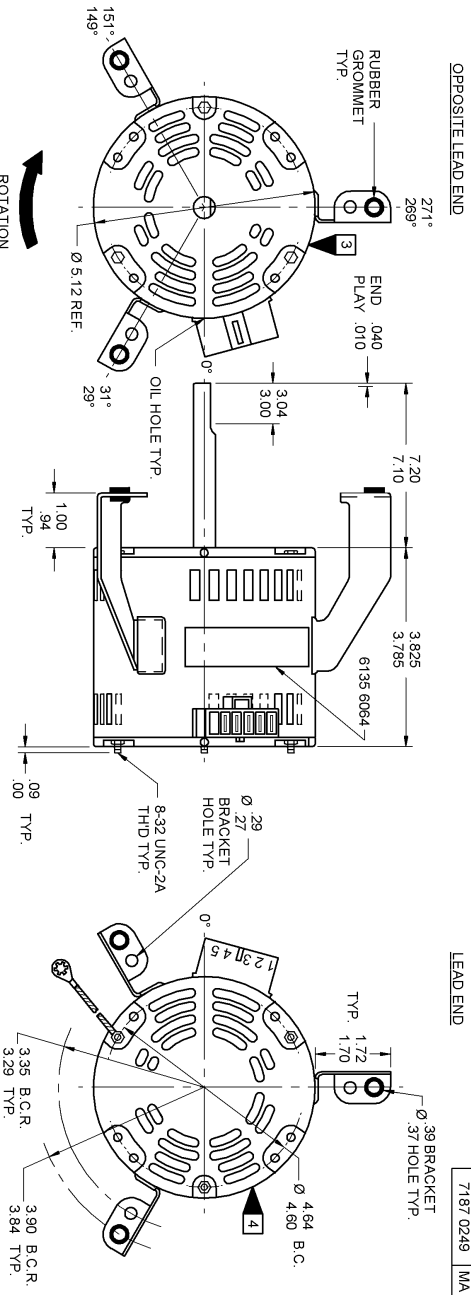
Electrical Type	Permanent Split Capacitor	Starting Method	Across The Line
Poles	6	Rotation	Clockwise Shaft End
Mounting	Lug	Drive End Bearing	Sleeve
Opp Drive End Bearing	Sleeve	Frame Material	Rolled Steel
Shaft Type	Flat	Overall Length	11.02 in
Frame Length	3.83 in	Shaft Diameter	0.500 in
Shaft Extension	7.15 in		
Outline Drawing	7187024903_S001	Connection Drawing	SEE OUTLINE

This is an uncontrolled document once printed or downloaded and is subject to change without notice. Date Created:22/09/2020

- NOTES:
1. STATOR LOCATION DIMENSION IS FROM SLEEVE EDGE (OPPOSITE LEAD END) TO STATOR STEEL 1.091/01.
  2. STATOR STACK 1.14".
  3. THRU AIR SPACING BETWEEN WIRE AND METAL .094 MIN.
  4. THE BOLT TORQUE TOLERANCE .13 - .17 IN. LBS.
  5. FOR WASHER SET-UP, SEE CHART 0800 0279, DETAIL "A".
  6. PRESS STATOR SO THAT MODULAR CONNECTOR LEADS EXIT 65° COWLE FROM LEAD NOTCH IN SLEEVE AND WELD SEAM IS LINED UP APPROXIMATELY AS SHOWN.
  7. TWIST THE MODULAR CONNECTOR PRIOR TO INSERTING INTO THE LEAD NOTCH WITH LABELED SIDE TOWARD LEAD END SHIELD AND PLACE EXCESS LEAD MATERIAL BETWEEN COILS AND SLEEVE. THE TWISTED BUNDLE SHOULD GATHER LEADS TOGETHER LOOSELY AND HELP KEEP THE LEADS OUT OF THE STATOR I.D.
  8. SALES TO SPECIFY ON P.O. WHICH PACK TO USE.

PRODUCTION TEST AT IDLE		PERFORMANCE TEST		285 VOLTS 60 HZ		1 PH 1/20 HP		CAP. 3 MFD 320 VAC							
AMP	WATT	RPM	AMP	WATT	AMP	WATT	AMP	WATT	BREAK						
25	— 21	64.9	— 53.1	HIGH	1184	23	59	54.0	1075	.36	94	43.0	67	179	82.0
.12	— .10	29.7	— 24.3	MED.	1177	.11	27	22.0	1075	.17	43	19.0	33	85	36.0
.08	— .06	18.7	— 15.3	LOW	1164	.07	17	10.0	1075	.09	24	10.0	19	47	19.0

HI-POT TEST 2000 VOLTS  
MAX LEAKAGE CURRENT 5 mA



GROUND DATA: 18 GA. 2164" INS. 105° C THERMO GRINVEL 7.00'6.00" LONG WITH A # 10 SERATED RING TERMINAL.

SPECIAL INSTRUCTIONS: SHAFT IS BONDERIZED. ROTOR IS RUSTPROOFED.  
EYELETS PACKED WITH MOTOR. PAMPHLET PACKED WITH MOTOR.

**FASCO INDUSTRIES, INC.**  
MOTOR DIVISION  
ASSEMBLED IN MEXICO

**SAFETY WARNING**  
THIS MOTOR MUST BE SERVICED ACCORDING TO THE INSTRUCTIONS ON THE NAMEPLATE AND THE RECENT MODEL NUMBER TO ELECTRICAL SHOCK.

DATE/BAR CODE AREA PER 8882 6003

**FASCO** THERMALLY PROTECTED

CONNECTION DIAGRAM  
1. HI CAPACITOR  
2. HI CONNECTION LINE  
3. HI LINE

MODEL **D1049**

DATE/BAR CODE AREA PER 8882 6003

LOCATE **C** OF NAMEPLATE ON **C** OF SLEEVE TO READ RIGHT FROM LEAD END OF MOTOR CENTER AT 30° CWLIE.  
SIZE 3.50 X 1.00

MOTORS PACKED MAX. PER SKID:	PALETT PACK, 32 CARTON PACK	TRAY PACK
CUSTOMER:	FASCO DISTRIBUTING CO.	
PART NUMBER:	D1049	
APPLICATION:	DIST. SALES	MOTOR TYPE
FINISH COLOR:	GRAY	P.S.C.
MOTOR WEIGHT:	8.75 LBS.	B LA FR A S C E B A R
ENVIRONMENT:	WET	00 87 33 V 05 AF 7 7 0
INSULATION CLASS:	B	MOTOR NUMBER
		7187 0249
		REV. 3

ECO	REV.	DATE	SPEC/CHECK
632777	0	4-1-04	LDC/LDC
638376	1	7-10-08	MKR/MKR
639305	2	3-27-09	MKR/MKR
642849	3	12-8-11	MKR/MKR

A. SEE PACKAGING MANUAL PAGE 19 FOR PACKAGING PROCEDURES.

1 MOTOR/CARTON:  
16 MOTORS/LAYER:  
2 LAYERS/PALLET:  
32 MOTORS/PALLET.

B. SEE DRAWING 8785 6079 SH. 1 FOR PALLET LAYOUT.  
C. CENTER LABEL, 6120 6637, ON END OF CARTON.  
D. PLACE 3 EYELETS, 8654 6004, INTO CON ENVELOPE, 9782 4000. PLACE INTO CARTON WITH MOTOR.  
E. PLACE PAMPHLET, 6122 4579, IN CARTON WITH MOTOR.