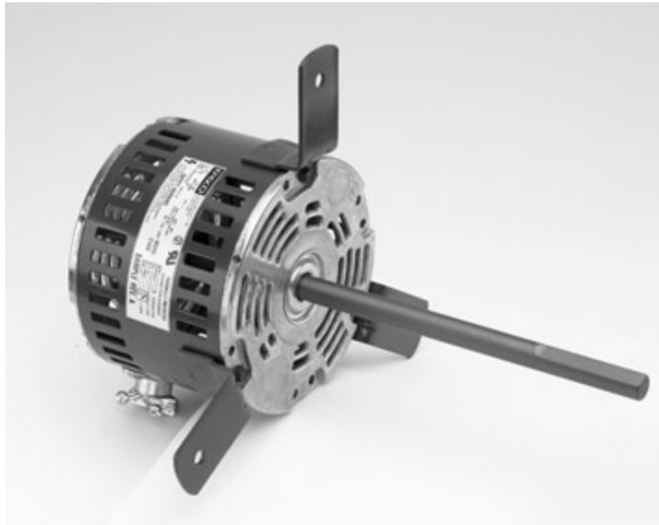


# PRODUCT INFORMATION PACKET

FASCO®

Model No: D1048  
Catalog No: D1048  
1/20 HP OEM Replacement Motor, 1075 RPM, 3 Speed, 277 Volts, 42 Frame, OAO  
HVAC/R OEM Replacement Motors



Regal and Fasco are trademarks of Regal Beloit Corporation or one of its affiliated companies.  
©2020 Regal Beloit Corporation, All Rights Reserved. MC017097E

REGAL



**Nameplate Specifications**

Output HP	1/20 Hp	Output KW	0.04 kW
Frequency	60 Hz	Voltage	277 V
Current	0.5 A	Speed	1075 rpm
Service Factor	1	Phase	1
Duty	Continuous	Insulation Class	B
Frame	42	Enclosure	Open Air Over
Thermal Protection	Automatic	Ambient Temperature	40 °C
UL	Recognized	CSA	Y
CE	N		

**Technical Specifications**

Electrical Type	Permanent Split Capacitor	Starting Method	Across The Line
Poles	6	Rotation	Clockwise Shaft End
Mounting	Lug	Drive End Bearing	Sleeve
Opp Drive End Bearing	Sleeve	Frame Material	Rolled Steel
Shaft Type	Flat	Overall Length	11.12 in
Frame Length	3.38 in	Shaft Diameter	0.500 in
Shaft Extension	7.25 in		
Outline Drawing	7187025002_S001	Connection Drawing	SEE OUTLINE

This is an uncontrolled document once printed or downloaded and is subject to change without notice. Date Created:22/09/2020

NOTES

1. STATOR LOCATION DIMENSION IS FROM SLEEVE EDGE (OPPOSITE LEAD END) TO STATOR STEEL 1.031.01.
2. STATOR STACK 1.14".
3. THRU AIR SPACING BETWEEN WIRE AND METAL .094 MIN.
4. THE BOLT TORQUE TOLERANCE 13-17 IN. LBS.
5. FOR WASHER SET-UP, SEE CHART 0600 0279 DETAIL "A".
6. SALES TO SPECIFY ON P. O. WHICH PACK TO USE.

ECO	REV.	DATE	SPEC/CHECK
632836	0	4-13-04	MKR/IMKR
639164	1	3-6-09	MKR/IMKR
642644	2	12-6-11	MKR/IMKR

- 71xx xxxx,R
- SEE PACKAGING MANUAL PAGE 19 FOR PACKAGING PROCEDURES.
    - 1 MOTOR/CARTON;
    - 16 MOTOR/LAYER;
    - 2 LAYERS/PALLET;
    - 32 MOTORS/PALLET.
  - SEE DRAWING 6785 6075 SH. 1 FOR PALLET LAYOUT.
  - CENTER LABEL 6120 6642, ON END OF CARTON.
  - PLACE PAMPHLET, 6122 4579, IN CARTON WITH MOTOR.

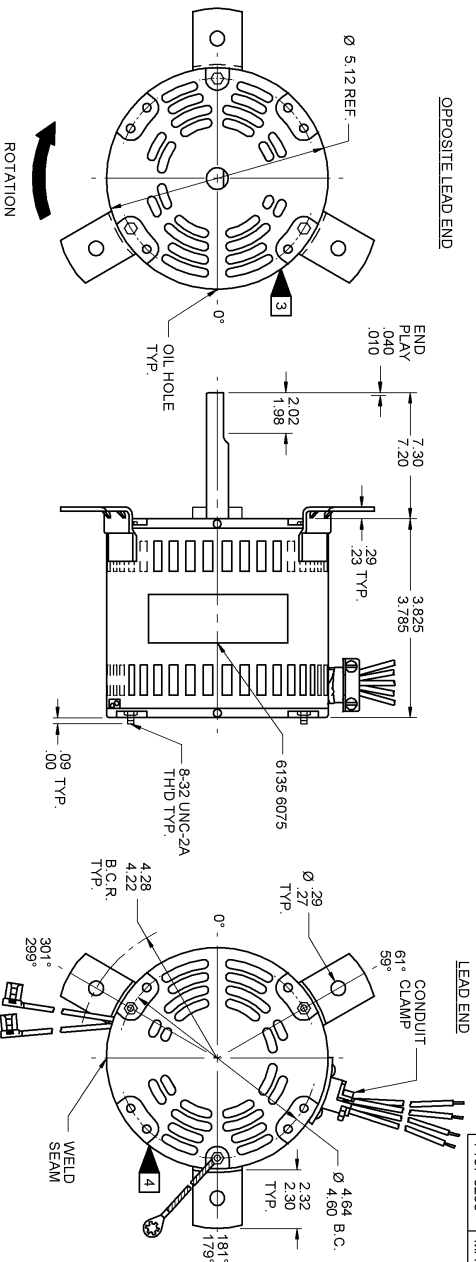
71xx xxxxC

71xx xxxxZ

PRODUCTION TEST AT IDLE		PERFORMANCE TEST		IDLE		LOADED		LOCKED		BREAK					
AMP	WATT	RPM	AMP	WATT	AMP	WATT	AMP	WATT	AMP	OZ/IN					
.35	— 29	94.6	— 77.4	HIGH	1185	.32	86	75	1075	.49	135	66	.90	252	121
.15	— .13	42.9	— 35.1	MED.	1181	.14	39	29	1075	.21	59	28	.42	113	51
.10	— .08	25.3	— 20.7	LOW	1175	.09	23	13	1075	.12	33	13	.24	61	26

227 VOLTS 60 HZ      227 VOLTS 60 HZ      1 PH      1/20 HP      CAP. 4 MFD 370 VAC

HI-POT TEST 2000 VOLTS      MAX LEAKAGE CURRENT 5 mA



LEAD DATA: 18 GA. 2/64" INS. 125° C EPDM, WHITE, BLACK, BLUE AND RED LINE LEADS 50.00"/48.00" LONG WITH .56"/.44" STRIPS, BROWN AND BRN/WH TYP. CAP. LEADS 4.00"/2.00" LONG WITH 1/4" FLAG TERMINALS.

GROUND DATA: 18 GA. 2/64" INS. 105° C THERMO GRN/VEL 7.00"/8.00" LONG WITH A #10 SERATED RING TERMINAL.

SPECIAL INSTRUCTIONS: ROTATE WELD SEAM 90° CW/LE AS SHOWN. SHAFT IS BONDENRIZED ROTOR IS RUST-PROOFED. PAMPHLET PACKED WITH MOTOR.

**FASCO** THERMALLY PROTECTED MOTOR DIVISION ASSEMBLED IN MEXICO

V.277  
 N2 60 CAP PH ED 378 ROT  
 HP 1120 TYPE UN6781 NO. 7187-0250  
 RPM 1075 (3 SPD) INS CL B 40° C AHS  
**SAFETY WARNING**  
 THIS MOTOR MUST BE GROUND IN ACCORDANCE WITH THE NATIONAL ELECTRICAL CODE (NEC) WHENEVER POSSIBLE. ALWAYS USE THE ELECTRIC SHOCK PREVENTION PROCEDURES.



BRN CONNECTION DIAGRAM  
 BRN/WH CAPACITOR  
 BRN/WH BL/WH LINE  
 RED/LO — LINE

MODEL D1048

DATE/PART CODE AREA PER 6882 6003

6135 6075 R REV. 2

LOCATE & OF NAMEPLATE ON & OF SLEEVE TO READ RIGHT FROM LEAD END OF MOTOR CENTER AT 0°.

SIZE 3.50 X 1.00

MOTORS PACKED MAX. PER SKID:	PALLET PACK 32 CARTON PACK	TRAY PACK
CUSTOMER:	FASCO DISTRIBUTING CO.	
PART NUMBER:	D1048	
APPLICATION:	DIST. SALES	MOTOR TYPE
FINISH COLOR:	GRAY	P.S.C.
MOTOR WEIGHT:	8.9 LBS.	B LA FR A S C E B A
ENVIRONMENT:	WET	00 87 33 V 05 AG 7 7 0
INSULATION CLASS:	B	R
		MOTOR NUMBER/REV.
		7187 0250 2