

PRODUCT INFORMATION PACKET

FASCO®

Model No: D1041
Catalog No: D1041
1/15 HP OEM Replacement Motor, 1075 RPM, 3 Speed, 265 Volts, 42 Frame, OAO
HVAC/R OEM Replacement Motors



Regal and Fasco are trademarks of Regal Beloit Corporation or one of its affiliated companies.
©2020 Regal Beloit Corporation, All Rights Reserved. MC017097E

REGAL



Nameplate Specifications

| | | | |
|--------------------|------------|---------------------|---------------|
| Output HP | 1/15 Hp | Output KW | 0.05 kW |
| Frequency | 60 Hz | Voltage | 265 V |
| Current | 0.60 A | Speed | 1075 rpm |
| Service Factor | 1 | Phase | 1 |
| Duty | Continuous | Insulation Class | B |
| Frame | 42 | Enclosure | Open Air Over |
| Thermal Protection | Automatic | Ambient Temperature | 40 °C |
| UL | Recognized | CSA | Y |
| CE | N | | |

Technical Specifications

| | | | |
|-----------------------|---------------------------|--------------------|---------------------|
| Electrical Type | Permanent Split Capacitor | Starting Method | Across The Line |
| Poles | 6 | Rotation | Clockwise Shaft End |
| Mounting | Lug | Drive End Bearing | Sleeve |
| Opp Drive End Bearing | Sleeve | Frame Material | Rolled Steel |
| Shaft Type | Flat | Overall Length | 11.02 in |
| Frame Length | 3.83 in | Shaft Diameter | 0.500 in |
| Shaft Extension | 7.15 in | | |
| Outline Drawing | 7187024503_S001 | Connection Drawing | SEE OUTLINE |

This is an uncontrolled document once printed or downloaded and is subject to change without notice. Date Created:22/09/2020

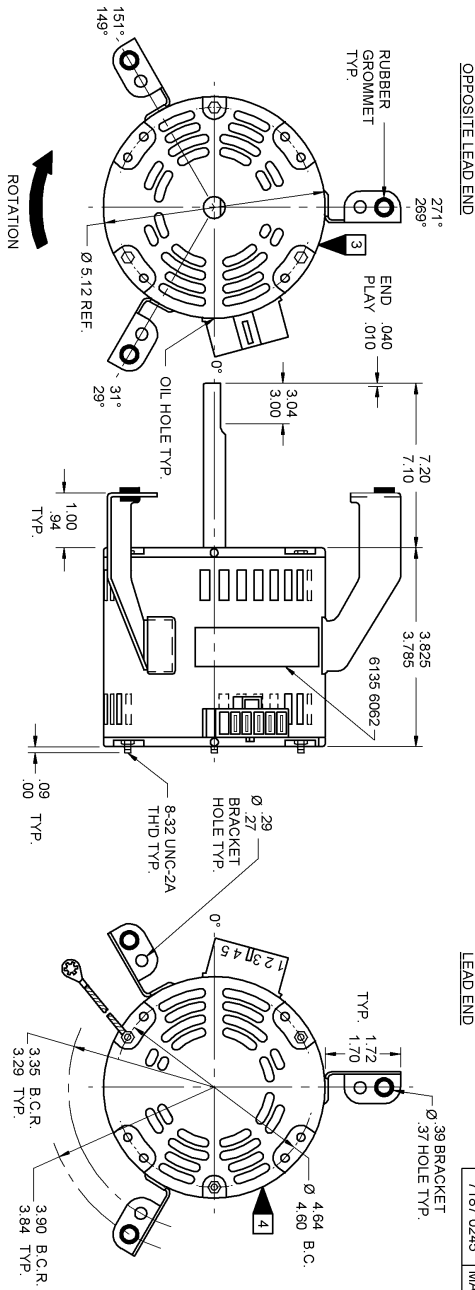
- NOTES:
- STEEL LOCATION DIMENSION IS FROM SLEEVE EDGE (OPPOSITE LEAD END) TO STATOR LEAD 1.091.01.
 - STATOR STACK 1 1/8".
 - THRU AIR SPACING BETWEEN WIRE AND METAL .094 MIN.
 - THE BOLT TORQUE TOLERANCE .13 - .17 IN. LBS.
 - FOR WASHER SET-UP, SEE CHART 0800 0279, DETAIL "A".
 - PRESS STATOR SO THAT MODULAR CONNECTOR LEADS EXIT 65° COWLE FROM LEAD NOTCH IN SLEEVE AND WELD SEAM IS LINED UP APPROXIMATELY AS SHOWN.
 - TWIST THE MODULAR CONNECTOR PRIOR TO INSERTING INTO THE LEAD NOTCH WITH LABELED SIDE TOWARD LEAD END END SHIELD AND PLACE EXCESS LEAD MATERIAL BETWEEN COILS AND SLEEVE. THE TWISTED BUNDLE WILL GATHER LEADS TOGETHER LOOSELY AND HELP KEEP THE LEADS OUT OF THE STATOR I.D.
 - SALES TO SPECIFY ON P.O. WHICH PACK TO USE.

| ECO | REV. | DATE | SPEC/CHECK |
|--------|------|---------|------------|
| 632775 | 0 | 4-1-04 | LDC/LDC |
| 638375 | 1 | 7-10-08 | MKR/MKR |
| 639183 | 2 | 3-10-09 | MKR/MKR |
| 641585 | 3 | 9-21-10 | LDC/LDC |

- A. SEE PACKAGING MANUAL PAGE 19 FOR PACKAGING PROCEDURES.
- MOTOR/CARTON:
 - MOTORS/LAYER:
 - LAYERS/PALLET:
 - MOTORS/PALLET.
- B. SEE DRAWING 8785 6079 SH. 1 FOR PALLET LAYOUT.
- C. CENTER LABEL, 6120 6635, ON END OF CARTON.
- D. PLACE 3 EYELETS, 9854 6904, INTO CON ENVELOPE, 9782 4000. PLACE INTO CARTON WITH MOTOR.
- E. PLACE PAMPHLET, 6122 4579, IN CARTON WITH MOTOR.

| PRODUCTION TEST AT IDLE 285 VOLTS 60 HZ | MOTOR SPEED | PERFORMANCE TEST 285 VOLTS 60 HZ 1 PH 1/15 HP | | | | CAP. 4 MFD 320 VAC | BREAK | | | |
|--|-------------|---|--------|--------|-------|--------------------|-------|-------|-----|-------|
| | | IDLE | LOADED | LOCKED | | | | | | |
| AMP | WATT | RPM | AMP | WATT | OZ/IN | AMP | WATT | OZ/IN | | |
| 30 | 24 | 77.0 | 27 | 70 | 87.0 | 54 | 143 | 1.04 | 268 | 115.0 |
| 19 | 15 | 49.5 | 45 | 52.0 | 1075 | 34 | 90 | 27.0 | 68 | 71.0 |
| 14 | 12 | 36.3 | 33 | 34.0 | 1075 | 24 | 62 | 17.0 | 29 | 47.0 |

| OPPOSITE LEAD END | MOTOR SPEED | PERFORMANCE TEST 285 VOLTS 60 HZ 1 PH 1/15 HP | | | | CAP. 4 MFD 320 VAC | BREAK | | | |
|-------------------|-------------|---|--------|--------|-------|--------------------|-------|-------|-----|-------|
| | | IDLE | LOADED | LOCKED | | | | | | |
| AMP | WATT | RPM | AMP | WATT | OZ/IN | AMP | WATT | OZ/IN | | |
| 30 | 24 | 77.0 | 27 | 70 | 87.0 | 54 | 143 | 1.04 | 268 | 115.0 |
| 19 | 15 | 49.5 | 45 | 52.0 | 1075 | 34 | 90 | 27.0 | 68 | 71.0 |
| 14 | 12 | 36.3 | 33 | 34.0 | 1075 | 24 | 62 | 17.0 | 29 | 47.0 |



GROUND DATA: 18 GA. 2164" INS. 105° C THERMO. GRINDVEL 7.00'6.00" LONG WITH A # 10 SERATED RING TERMINAL.

7187 0245 = MADE IN U.S.A.
7187 0245R = ASSEMBLED IN MEXICO

FASCO INDUSTRIES, INC. THERMALLY PROTECTED MOTOR DIVISION

CONNECTION DIAGRAM

1. HI CAPACITOR
2. CONNECTION DIAGRAM
3. HI CAPACITOR
4. MED CAPACITOR
5. LO CAPACITOR

DATE/BAR CODE AREA PER 8882 6003

LOCATE \odot OF NAMEPLATE ON \odot OF SLEEVE TO READ RIGHT FROM LEAD END OF MOTOR CENTER AT 30° CWL.E.

SIZE 3.50 X 1.00

SAFETY WARNING: THIS MOTOR MUST BE SERVICED IN ACCORDANCE WITH THE INSTRUCTIONS ON THE NAMEPLATE AND THE RELEVANT PORTION OF THE ELECTRICAL SHOCK PREVENTION PAMPHLET.

SPECIAL INSTRUCTIONS: SHAFT IS BONDERIZED. ROTOR IS RUSTPROOFED.
EYELETS PACKED WITH MOTOR. PAMPHLET PACKED WITH MOTOR.

MOTORS PACKED MAX. PER SKID: _____ PALLET PACK, 32 CARTON PACK, _____ TRAY PACK

CUSTOMER: FASCO DISTRIBUTING CO.

PART NUMBER: D1041

APPLICATION: DIST. SALES

FINISH COLOR: GRAY

MOTOR WEIGHT: 8.25 LBS.

ENVIRONMENT: WET

INSULATION CLASS: B

MOTOR TYPE: P.S.C.

MOTOR NUMBER: 7187 0245

REV. 3