

PRODUCT INFORMATION PACKET

FASCO®

Model No: D1031
Catalog No: D1031
1/5 HP OEM Replacement Motor, 1050 RPM, 208-230 Volts, 42 Frame, OAO
HVAC/R OEM Replacement Motors



Regal and Fasco are trademarks of Regal Beloit Corporation or one of its affiliated companies.
©2020 Regal Beloit Corporation, All Rights Reserved. MC017097E

REGAL



Nameplate Specifications

Output HP	1/5 Hp	Output KW	0.15 kW
Frequency	60 Hz	Voltage	208-230 V
Current	1.8 A	Speed	1050 rpm
Service Factor	1	Phase	1
Duty	Continuous	Insulation Class	B
Frame	42	Enclosure	Open Air Over
Thermal Protection	Automatic	Ambient Temperature	40 °C
UL	Recognized	CSA	Y
CE	N		

Technical Specifications

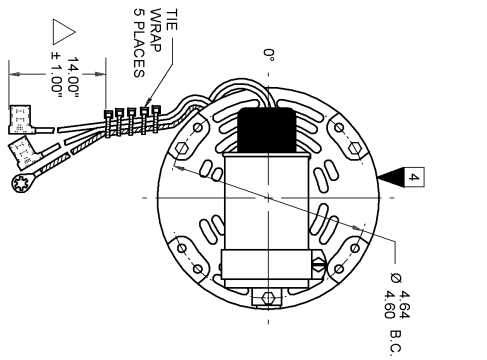
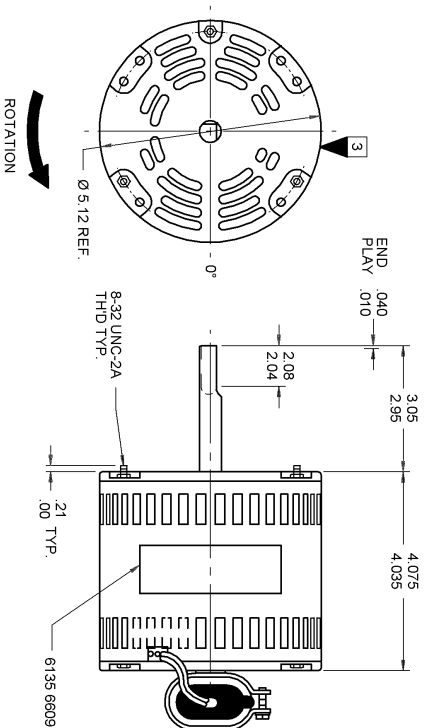
Electrical Type	Permanent Split Capacitor	Starting Method	Across The Line
Poles	6	Rotation	Counterclockwise Shaft End
Mounting	Round Belly Band	Drive End Bearing	Sleeve
Opp Drive End Bearing	Sleeve	Frame Material	Rolled Steel
Shaft Type	Flat	Overall Length	7.12 in
Frame Length	3.63 in	Shaft Diameter	0.500 in
Shaft Extension	3 in		
Connection Drawing	SEE OUTLINE	Outline Drawing	7187037700_S001

This is an uncontrolled document once printed or downloaded and is subject to change without notice. Date Created:06/11/2020

- NOTES
1. STATOR LOCATION DIMENSION IS FROM SLEEVE EDGE (OPPOSITE LEAD END) TO STATOR STEEL 1.031.01.
 2. STATOR STACK 1.112".
 3. THRU AIR SPACING BETWEEN WIRE AND METAL .094 MIN.
 4. THE BOLT TORQUE TOLERANCE 13-17 IN. LBS.
 5. FOR WASHER SET-UP, SEE CHART C600 0279, DETAIL "A".
 6. SALES TO SPECIFY ON P.O. WHICH PACK TO USE.
 7. ASSEMBLE 5 TIE WRAPS, 6S41 6000. FIRST TIE WRAP TO BE 15.00°/13.00° FROM END OF LINE LEAD TERMS. REMAINING 4 TIE WRAPS TO BE EVENLY SPACED APPROX. 8.00° APART AT 8.00°, 16.00°, 24.00° AND 32.00° FROM THE FIRST TIE WRAP.
 8. ASSEMBLE SPACER, 8867 0153, BETWEEN CAPACITOR MOUNTING CLAMP AND END SHIELD, 8463 0033, ON LEAD END OF MOTOR.

ECO	REV.	DATE	SPEC/CHECK
642456	0	10-03-11	GAE/GAE
<p>A. SEE PACKAGING MANUAL PAGE 2 FOR PACKAGING PROCEDURES.</p> <p>1 MOTOR/CARTON: 24 MOTORS/LAYER: 6 LAYERS/PALLET: 144 MOTORS/PALLET.</p> <p>B. SEE DRAWING 8785 6079 SH. 1 FOR PALLET LAYOUT.</p> <p>C. CENTER LABEL, 6120 7076, ON END OF CARTON.</p> <p>D. PLACE PAMPHLET, 6122 4579, IN CARTON WITH MOTOR.</p>			
71xx xxxxZ		71xx xxxxC	

PRODUCTION TEST AT IDLE		PERFORMANCE TEST		230 VOLTS 60 HZ		1 PH 1/5 HP		CAP. 3 MFD 370 VAC		BREAK	
AMP	WATT	RPM	AMP	WATT	OZ/IN	RPM	AMP	WATT	OZ/IN		
74	84.7	1192	67	77	224	1050	1.55	313	56	520	238
HIGH		HIGH		HIGH		HIGH		HIGH		HIGH	
HI-POT TEST 2000 VOLTS											
MAX LEAKAGE CURRENT 5 mA											



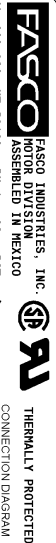
LEAD DATA: 18 GA. 4/64" INS. 125° C EPDM. WHITE AND BLACK LINE LEADS 57.00°/55.00" LONG WITH 1/4" PRE-INSULATED FLAG TERMINALS. BROWN AND BRN/WH CAP LEADS 6.00°/4.00" LONG WITH 1/4" FLAG TERMINALS. ALL LEADS ARE MEASURED FROM MOTOR PERIPHERY.

GROUND DATA: 18 GA. 2/64" INS. 125° C EPDM. GRN/YEL. 57.00°/55.00" LONG WITH A #10 SERRATED RING TERMINAL, MEASURED FROM MOTOR PERIPHERY.

NOTE: FIRST TIE WRAP TO BE 15.00°/13.00° FROM END OF LINE LEAD TERMINALS. THE REMAINING 4 TIE WRAPS TO BE EVENLY SPACED APPROX. 8.00° APART AT 8.00°, 16.00°, 24.00° AND 32.00° FROM FIRST TIE WRAP

SPECIAL INSTRUCTIONS: SHAFT IS BONDERIZED. ROTOR IS RUSTPROOFED.

△ CRITICAL DIMENSION. PAMPHLET PACKED WITH MOTOR.



VP 208-230 HZ 50/60 PH 1 MD 180 VAC
 AMP 1.8 RPM 1050 CAP 3.3 MFD 370 VAC
 INS CL B 40° C AMB NO. 7187-0377
 TYPE U18181

SAFETY WARNING: THIS MOTOR MUST BE DERATED IN ACCORDANCE WITH LOCAL OR NATIONAL ELECTRICAL CODES TO PREVENT OVERHEATING. ALWAYS REFER TO ELECTRICAL SPECIFICATION BAR CODE AREA PER 8882 6003

6135 6609 R REV. 0

LOCATE & OF NAMEPLATE ON & OF SLEEVE TO READ RIGHT FROM LEAD END OF MOTOR CENTER AT 0°.

SIZE 3.50 X 1.00

MOTORS PACKED MAX. PER SKID:	PALLET PACK, 144 CARTON PACK	
CUSTOMER:	FASCO DISTRIBUTING CO.	
PART NUMBER:	D1031	
APPLICATION: DIST. SALES	MOTOR TYPE P.S.C.	
FINISH COLOR: GRAY	LBS.	
MOTOR WEIGHT: 10.63	ENVIRONMENT: WET	
INSULATION CLASS: B	00 87 30 V 06 AK 5 7 0	
PROPERTY: DO NOT DUPLICATE OR DISCLOSE TO THIRD PARTIES WITHOUT WRITTEN PERMISSION OF FASCO IND. INC., ELDON MO.	FASCO INDUSTRIES, INC. MOTOR DIVISION ELDON PLANT	
MOTOR NUMBER	REV.	
7187 0377	0	