

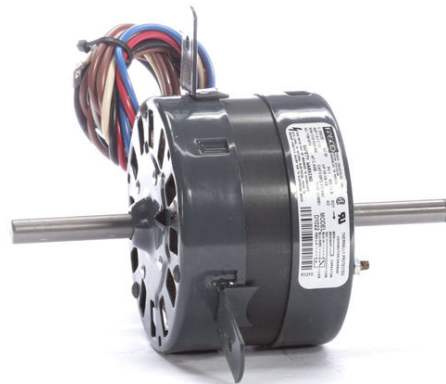
PRODUCT INFORMATION PACKET

FASCO®

Model No: D1022

Catalog No: D1022

1/5-1/6-1/8 HP OEM Replacement Motor, 1110-1020-940 RPM, 3 Speed, 208/230 Volts, 42 Frame, OAO
HVAC/R OEM Replacement Motors



Regal and Fasco are trademarks of Regal Beloit Corporation or one of its affiliated companies.
©2020 Regal Beloit Corporation, All Rights Reserved. MC017097E

REGAL



Nameplate Specifications

Output HP	1/5-1/6-1/8 Hp	Output KW	0.15 kW
Frequency	60 Hz	Voltage	208/230 V
Current	1.6-1.1-1.0 A	Speed	1110-1020-940 rpm
Service Factor	1	Phase	1
Duty	Continuous	Insulation Class	B
Frame	42	Enclosure	Open Air Over
Thermal Protection	Automatic	Ambient Temperature	40 °C
UL	Recognized	CSA	Y
CE	N		

Technical Specifications

Electrical Type	Permanent Split Capacitor	Starting Method	Across The Line
Poles	6	Rotation	Counterclockwise Shaft End
Mounting	Lug	Drive End Bearing	Sleeve
Opp Drive End Bearing	Sleeve	Frame Material	Na
Shaft Type	Flat	Overall Length	9.02 in
Shaft Diameter	0.500 in	Shaft Extension	2.375 in
Outline Drawing	7186001408_S001	Connection Drawing	SEE OUTLINE

This is an uncontrolled document once printed or downloaded and is subject to change without notice. Date Created:06/11/2020

- NOTES
1. THRU AIR SPACING BETWEEN WIRE AND METAL .094 MIN.
 2. THE BOLT TORQUE TOLERANCE 7.12 IN. LBS.
 3. FOR WASHER SET-UP, SEE CHART 0800 0279, DETAIL "A".
 4. SALES TO SPECIFY ON P. O. WHICH PACK TO USE.

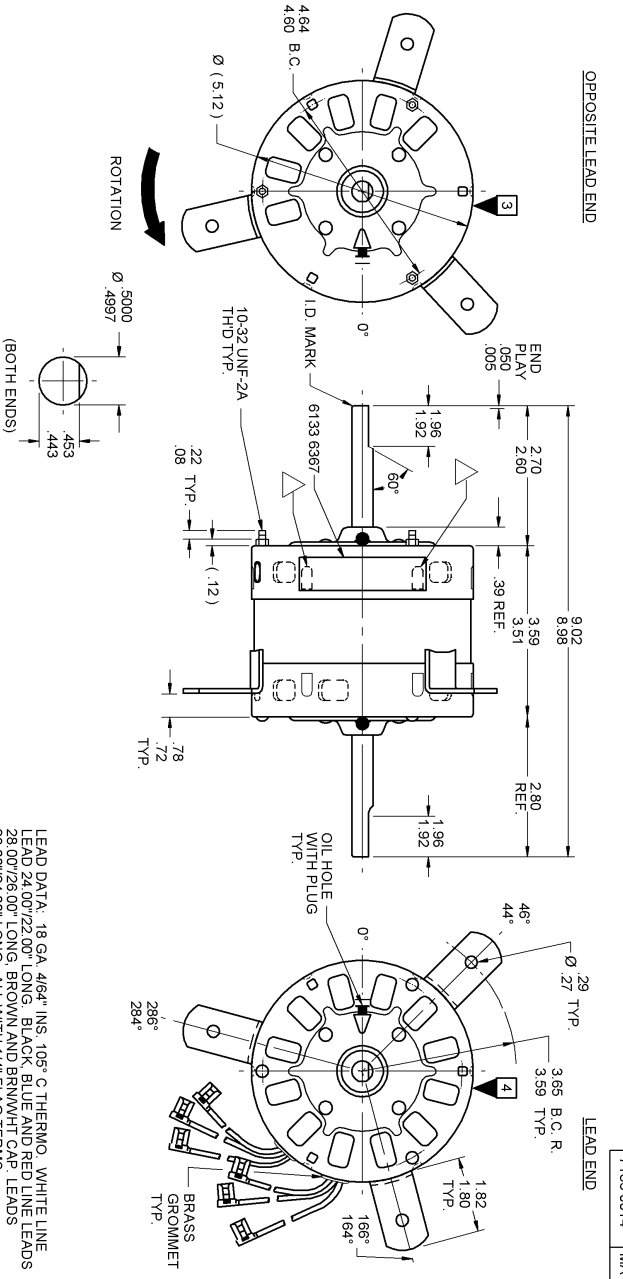
ECO	REV.	DATE	SPEC/CHECK
632346	5	1-20-04	MKR/MKR
632981	6	5-10-04	GAE/RWS
638758	7	10-27-08	GAE/GAE
640253	8	08-05-09	GAE/GAE

ECO	REV.	DATE	SPEC/CHECK
632346	5	1-20-04	MKR/MKR
632981	6	5-10-04	GAE/RWS
638758	7	10-27-08	GAE/GAE
640253	8	08-05-09	GAE/GAE

ECO	REV.	DATE	SPEC/CHECK
632346	5	1-20-04	MKR/MKR
632981	6	5-10-04	GAE/RWS
638758	7	10-27-08	GAE/GAE
640253	8	08-05-09	GAE/GAE

PRODUCTION TEST AT IDLE		PERFORMANCE TEST		230 VOLTS 60 HZ		1 PH 1/5 HP		CAP. 5 MFD 370 VAC							
AMP	WATT	RPM	AMP	WATT	RPM	AMP	WATT	OZ/IN	BREAK						
96	77	137.5	112.5	HIGH	1195	.86	125	195	1110	1.28	275	81	2.57	548	288
39	32	66.0	54.0	MED.	1193	.35	60	149	1020	1.00	210	45	1.62	314	154
28	23	48.4	39.6	LOW	1192	.25	44	114	940	.88	178	32	1.23	226	114

MAX LEAKAGE CURRENT 5 mA HI-POT TEST 2000 VOLTS



LEAD DATA: 18 GA. 4/64" INS. 105° C THERMO. WHITE LINE LEAD 24.00"/22.00" LONG. BLACK BLUE AND RED LINE LEADS 28.00"/26.00" LONG. BROWN AND BROWN/WHITE CAP LEADS 28.00"/24.00" LONG. ALL WITH 1/4" FLAG TERMS.

7186 0014 - MADE IN U.S.A.
 7186 0014R - ASSEMBLED IN MEXICO

FASCO FASCO INDUSTRIES, INC. THERMALLY PROTECTED MOTOR DIVISION

208/230 VZ 60 PH 1, 5, 6, 8, 9, 10, 12, 15, 18, 20, 25, 30, 35, 40, 45, 50, 60, 75, 90, 100, 125, 150, 175, 200, 225, 250, 275, 300, 325, 350, 375, 400, 450, 500, 550, 600, 650, 700, 750, 800, 850, 900, 950, 1000, 1100, 1200, 1300, 1400, 1500, 1600, 1700, 1800, 1900, 2000, 2200, 2400, 2600, 2800, 3000, 3200, 3400, 3600, 3800, 4000, 4200, 4400, 4600, 4800, 5000, 5200, 5400, 5600, 5800, 6000, 6200, 6400, 6600, 6800, 7000, 7200, 7400, 7600, 7800, 8000, 8200, 8400, 8600, 8800, 9000, 9200, 9400, 9600, 9800, 10000

NO. 7186-0014 40° C AMB. TYPE UT8881 SAFETY WARNING

THIS MOTOR MUST BE GROUNDED IN ACCORDANCE WITH THE NATIONAL ELECTRICAL CODE (NEC) AND THE NATIONAL FIRE PROTECTION ASSOCIATION (NFPA) 70B. FAILURE TO GROUND THIS MOTOR MAY BE DANGEROUS TO PERSONS AND PROPERTY.

DATE/FAB. CODE AREA PER 8882 6003

6133 6367 R REV. 3

LOCATE NAMEPLATE .05 FROM EDGE OF OPPOSITE LEAD END COVER TO READ RIGHT FROM LEAD END OF MOTOR CENTER AT 0°.

SIZE 3.50 X 1.00

SPECIAL INSTRUCTIONS: SHAFT IS BONDERIZED. ROTOR IS RUSTPROOFED. FLATS TO BE PARALLEL WITHIN ±20°. LANCES MUST BE COMPLETELY COVERED BY NAMEPLATE. PAMPHLET PACKED WITH MOTOR.

MOTORS PACKED MAX. PER SKID: PALLET PACK 48 CARTON PACK. TRAY PACK

CUSTOMER: FASCO DISTRIBUTING CO.

PART NUMBER: D1022

APPLICATION: DIST. SALES

FINISH COLOR: GRAY

MOTOR WEIGHT: 9.25 LBS.

ENVIRONMENT: WET

INSULATION CLASS: B

MOTOR TYPE: P.S.C.

MOTOR NUMBER: 7186 0014

REV: 8