

# PRODUCT INFORMATION PACKET

FASCO®

Model No: D1011

Catalog No: D1011

1/6-1/12-1/15 HP OEM Replacement Motor, 1050 RPM, 3 Speed, 208/230 Volts, 42 Frame, OAO  
HVAC/R OEM Replacement Motors



Regal and Fasco are trademarks of Regal Beloit Corporation or one of its affiliated companies.  
©2019 Regal Beloit Corporation, All Rights Reserved. MC017097E

REGAL



**Nameplate Specifications**

Output HP	1/16-1/12-1/15 Hp	Output KW	0.04 kW
Frequency	60 Hz	Voltage	208/230 V
Current	2.51-1.6-1.2 A	Speed	1050 rpm
Service Factor	1	Phase	1
Duty	Air Over	Insulation Class	B
Frame	42	Enclosure	Open Air Over
Thermal Protection	Thermally Protected	Ambient Temperature	40 °C
UL	Recognized	CSA	Y
CE	N		

**Technical Specifications**

Electrical Type	Shaded Pole	Starting Method	Across The Line
Poles	6	Rotation	Clockwise Shaft End
Mounting	Extended Studs	Drive End Bearing	Sleeve
Opp Drive End Bearing	Sleeve	Frame Material	Na
Shaft Type	Flat	Overall Length	9.38 in
Shaft Diameter	0.500 in	Shaft Extension	3.33 in

This is an uncontrolled document once printed or downloaded and is subject to change without notice. Date Created:29/10/2019

NOTES

1. THRU AIR SPACING BETWEEN WIRE AND METAL .10 MIN.
2. THE BOLT TOLERANCE 7 - 12 IN. LBS.
3. FOR WASHER SET-UP: SEE CHART C600 0279. DETAIL "A".
4. SALES TO SPECIFY ON P.O. WHICH DIRECTION TOWARD THE OPEN END OF THE PALLET. SEE P.S. 8889 4408.
5. CARTON LABELS MUST ALL FACE ONE DIRECTION TOWARD THE OPEN END OF THE PALLET. SEE P.S. 8889 4408.

ECO	REV.	DATE	SPEC/CHECK
629748	28	5-16-02	MKR/RWS
633191	29	7-13-04	JAK/RWS
640576	30	10-1-09	LDC/LDC
C439224	31	06-16-2010	BGP/RPT

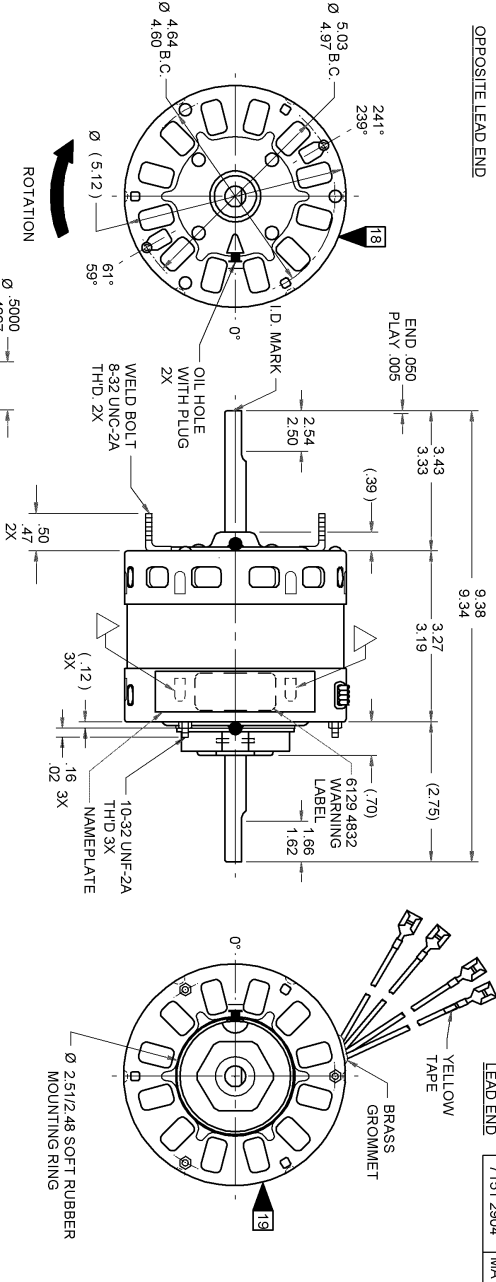
A. SEE PACKAGING MANUAL PAGE 2 FOR PACKAGING PROCEDURE.

1 MOTOR/CARTON:  
32 MOTORS/LAYER:  
6 LAYERS/PALLET:  
192 MOTORS/PALLET.

B. SEE DRAWING 8785 6079 SH. 1 FOR PALLET LAYOUT.  
C. CENTER LABEL, 6122 8937, ON END OF CARTON.  
D. PLACE PAMPHLET, 6122 4579, IN CARTON WITH MOTOR.

71xx xxxxC	71xx xxxx,M	71xx xxxxZ
A. SEE DRAWING 8785 6079 SH. 1 FOR PALLET LAYOUT. C. CENTER LABEL, 6122 8937, ON END OF CARTON. D. PLACE PAMPHLET, 6122 4579, IN CARTON WITH MOTOR.		

PRODUCTION TEST AT IDLE 230 VOLTS 60 HZ	MOTOR SPEED	PERFORMANCE TEST 230 VOLTS 60 HZ 1 PH 1/6 HP				BREAK
		IDLE	LOADED	LOCKED		
AMP	RPM	AMP	AMP	AMP	AMP	OZ/IN
2.42 — 1.98	272.8 — 223.2	2.2	2.4	63	3.2	454
1.54 — 1.26	181.5 — 148.5	1.4	1.6	45	2.1	292
1.10 — .90	129.8 — 106.2	1.0	1.3	34	1.5	208
HI-POT TEST 2000 VOLTS						
MAX LEAKAGE CURRENT 5 mA						



LEAD DATA: 18 GA. 4/64" INS. 125° C EPDM. ORANGE  
BLANK BLUE AND RED LEADS 2800/2400 LBS. 1/6 HP  
YELLOW AND GREEN LEADS 8893/980 LBS. 1/6 HP  
(NOTE: RED LEAD HAS YELLOW TAPE APPROXIMATELY 3/4"  
FROM END OF TERMINAL.)

**6129 4832**

**SAFETY WARNING**

The Motor Must Be Grounded  
to Prevent Possible Injury  
Due to Electrical Shock

0046-4072 0047-0356

**FASCO** Motor Division, Inc.

Assembled in Mexico  
No. 71512904  
209230 V

TYPE US1B1  
Class B  
1000 RPM  
Model D1011  
1/6-1/2-1/15 HP  
Thermally Protected

PH 1  
Max Amb. 40° C  
2.5-1.6-1.2 A

CONNECTION DIAGRAM  
ORANGE  
BLUE-MED  
RED-LOW  
LINE

SPECIAL INSTRUCTIONS: FLATS TO BE PARALLEL WITHIN ± 20°. SHAFT IS BONDERIZED.  
LANCES MUST BE COMPLETELY COVERED BY NAMEPLATE. PAMPHLET PACKED WITH MOTOR.

MOTORS PACKED MAX. PER SKID: PALLET PACK 192 CARTON PACK TRAY PACK

CUSTOMER: FASCO DISTRIBUTING CO.

PART NUMBER: D1011

APPLICATION: DIST. SALES

FINISH COLOR: GRAY

MOTOR WEIGHT: 7.44 LBS.

ENVIRONMENT: DAMP

INSULATION CLASS: B

MOTOR TYPE	SHADED POLE	MOTOR NUMBER	REV
B LA FR A S C E B A		7151 2904	31

PROHIBITARY: DO NOT BORROW OR DISCLOSE TO THIRD PARTIES WITHOUT  
WRITTEN PERMISSION OF FASCO IND. INC., ELDON MO.

FASCO INDUSTRIES, INC.  
MOTOR DIVISION  
ELDON PLANT