

PRODUCT INFORMATION PACKET

FASCO®

Model No: D1010

Catalog No: D1010

1/8-1/12-1/15 HP OEM Replacement Motor, 1050 RPM, 3 Speed, 115 Volts, 42 Frame, OAO
HVAC/R OEM Replacement Motors



Regal and Fasco are trademarks of Regal Beloit Corporation or one of its affiliated companies.
©2019 Regal Beloit Corporation, All Rights Reserved. MC017097E

REGAL



Nameplate Specifications

Output HP	1/8-1/12-1/15 Hp	Output KW	0.10 kW
Frequency	60 Hz	Voltage	115 V
Current	4.4-3.0-2.3 A	Speed	1050 rpm
Service Factor	1	Phase	1
Duty	Air Over	Insulation Class	A
Frame	42	Enclosure	Open Air Over
Thermal Protection	Thermally Protected	Ambient Temperature	40 °C
UL	Recognized	CSA	Y
CE	N		

Technical Specifications

Electrical Type	Shaded Pole	Starting Method	Across The Line
Poles	6	Rotation	Clockwise Shaft End
Mounting	Extended Studs	Drive End Bearing	Sleeve
Opp Drive End Bearing	Sleeve	Frame Material	Na
Shaft Type	Flat	Overall Length	9.48 in
Shaft Diameter	0.500 in	Shaft Extension	3.33 in

This is an uncontrolled document once printed or downloaded and is subject to change without notice. Date Created:29/10/2019

NOTES

1. THRU AIR SPACING BETWEEN WIRE AND METAL .10 MIN.
2. THE BOLT TOLERANCE 7 - 12 IN. LBS.
3. FOR WASHER SET-UP, SEE CHART C600 0279, DETAIL "A".
4. SALES TO SPECIFY ON P.O. WHICH PACK TO USE.
5. CARTON LABELS MUST ALL FACE ONE DIRECTION TOWARD THE OPEN END OF THE PALLET. SEE P. S. 8893 4408.

Uncontrolled Copy

ECO	REV.	DATE	SPEC/CHECK
631197	21	5-16-03	LDC/LDC
638597	22	9-5-08	LDC/LDC
639414	23	04-08-09	GAE/GAE
C439213	24	06-15-2010	BGR/RPT

A. SEE PACKAGING MANUAL PAGE 2 FOR PACKAGING PROCEDURE.

1 MOTOR/CARTON:
32 MOTOR/LAYER:
6 LAYERS/PALLET:
192 MOTOR/PALLET.

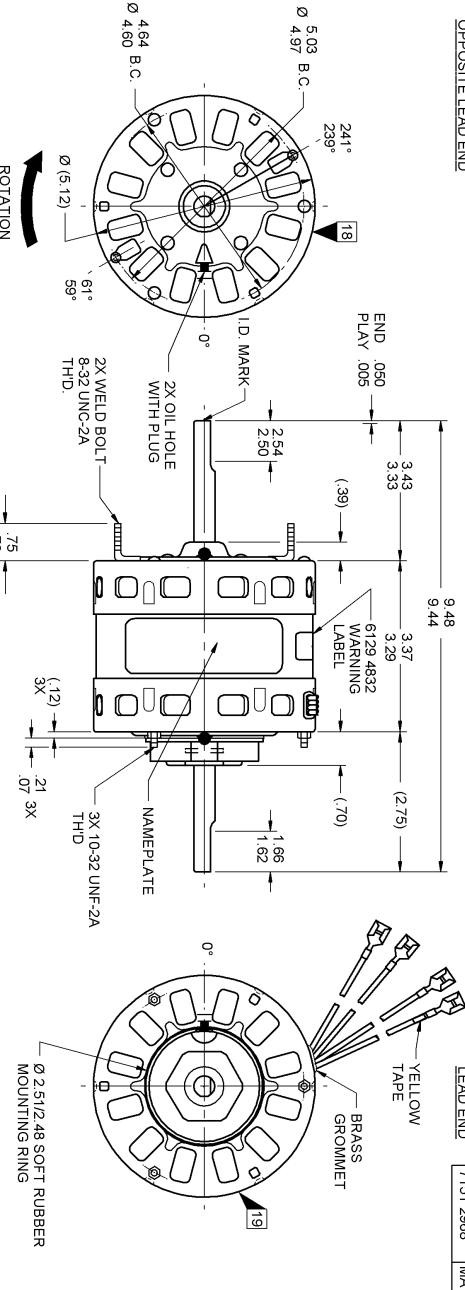
- B. SEE DRAWING 8785 6079 SH. 1 FOR PALLET LAYOUT.
- C. CENTER LABEL, 6122 5936, ON END OF CARTON.
- D. PLACE PAMPHLET, 6122 4579, IN CARTON WITH MOTOR.

PRODUCTION TEST AT IDLE		PERFORMANCE TEST		115 VOLTS 60 HZ		1 PH		1/8 HP	
AMP	WATT	RPM	IDLE AMP	WATT	OZ/IN	RPM	LOADED AMP	WATT	BREAK OZ/IN
4.29	3.51	253.0	3.9	230	140	1050	4.5	330	156
2.97	2.43	172.7	2.7	157	95	1050	3.1	222	108
2.20	1.80	123.2	2.0	112	76	975	2.5	178	81

HI-POT TEST 2000 VOLTS		LOADED		LOCKED	
AMP	WATT	AMP	WATT	AMP	WATT
2.20	1.80	2.0	112	2.5	178
2.97	2.43	2.7	157	3.1	222
4.29	3.51	3.9	230	4.5	330

MAX LEAKAGE CURRENT 5 mA

LEAD END 7151 2968 MA



6129 4832

SAFETY WARNING
 This motor is designed and constructed in accordance with local electrical codes. Do not use for applications not intended. Refer to Electrical Symbols.

0046-4072

0047-0386

FASCO Motor Division, Inc.
 Associated in Mexico No. 71512968
 115 V 60 Hz 1050 RPM
 Model D1010 1/8 HP Thermally Protected

PH 1
 Max Amb. 40° C
 4.43 0.23 A

CONNECTION DIAGRAM:
 ORANGE - BLACK - BLUE - RED - LINE
 BLUE - HI - RED - LOW - LINE

61299853

LEAD DATA: 18 GA. 4/64" INS. 125° C EPDM, ORANGE, BLACK, BLUE AND RED LEADS 26.00"/24.00" LONG WITH 1/4" IN-LINE Q. C. TERMINALS. 3903-9169, AMP # 42692-2. (NOTE: RED LEAD HAS YELLOW TAPE APPROXIMATELY 3/4" FROM END OF TERMINAL.)

SPECIAL INSTRUCTIONS: FLATS TO BE PARALLEL WITHIN ± 20°. SHAFT IS BONDERIZED.
 PAMPHLET PACKED WITH MOTOR.

MOTORS PACKED MAX. PER SKID. PALLET PACK. 192 CARTON PACK. TRAY PACK.
 CUSTOMER: FASCO DISTRIBUTING CO. FINISH COLOR: GRAY MOTOR TYPE: SHADED POLE
 FASCO INDUSTRIES, INC. MOTOR DIVISION ELDON PLANT

APPLICATION:	DIST. SALES	MOTOR TYPE	MOTOR NUMBER	REV.
FINISH COLOR:	GRAY	SHADED POLE	7151 2968	24
MOTOR WEIGHT:	8.56 LBS.			
ENVIRONMENT:	DAMP			
INSULATION CLASS:	A			

LOCATE Ⓢ OF NAMEPLATE ON Ⓢ OF STATOR TO READ RIGHT FROM LEAD END OF MOTOR CENTER AT 0°.