

PRODUCT INFORMATION PACKET

FASCO®

Model No: D1006
Catalog No: D1006
1/4 HP OEM Replacement Motor, 1600 RPM, 115 Volts, 4.4" Diameter, OAO
HVAC/R OEM Replacement Motors



Regal and Fasco are trademarks of Regal Beloit Corporation or one of its affiliated companies.
©2019 Regal Beloit Corporation, All Rights Reserved. MC017097E

REGAL



Nameplate Specifications

Output HP	1/4 Hp	Output KW	0.19 kW
Frequency	60 Hz	Voltage	115 V
Current	7.2 A	Speed	1600 rpm
Service Factor	1	Phase	1
Duty	Air Over	Insulation Class	B
Frame	4.4	Enclosure	Open Air Over
Thermal Protection	Thermally Protected	Ambient Temperature	40 °C
UL	Recognized	CSA	Y
CE	N		

Technical Specifications

Electrical Type	Shaded Pole	Starting Method	Across The Line
Poles	4	Rotation	Clockwise Shaft End
Mounting	Rigid Base	Drive End Bearing	Sleeve
Opp Drive End Bearing	Sleeve	Frame Material	Na
Shaft Type	Flat	Overall Length	7.37 in
Shaft Diameter	0.500 in	Shaft Extension	2.75 in

This is an uncontrolled document once printed or downloaded and is subject to change without notice. Date Created:29/10/2019

NOTES

1. THRU AIR SPACING BETWEEN WIRE AND METAL .063 MIN.
2. THE BOLT TORQUE TOLERANCE 7 - 10 IN. LBS.
3. ROTOR FREENESS TO BE WITHIN 1 OZ. IN.
4. FOR WASHER SET-UP, SEE CHART CG00 0279, DETAIL "H".
5. ASSEMBLE BASE TO MOTOR O.D. PER P. S. 8893 6445.
6. MAXIMUM 0.1 Ω RESISTANCE BETWEEN GROUND TERMINAL AND MOTOR FRAME.
7. SALES TO SPECIFY ON P.O. WHICH PACK TO USE.

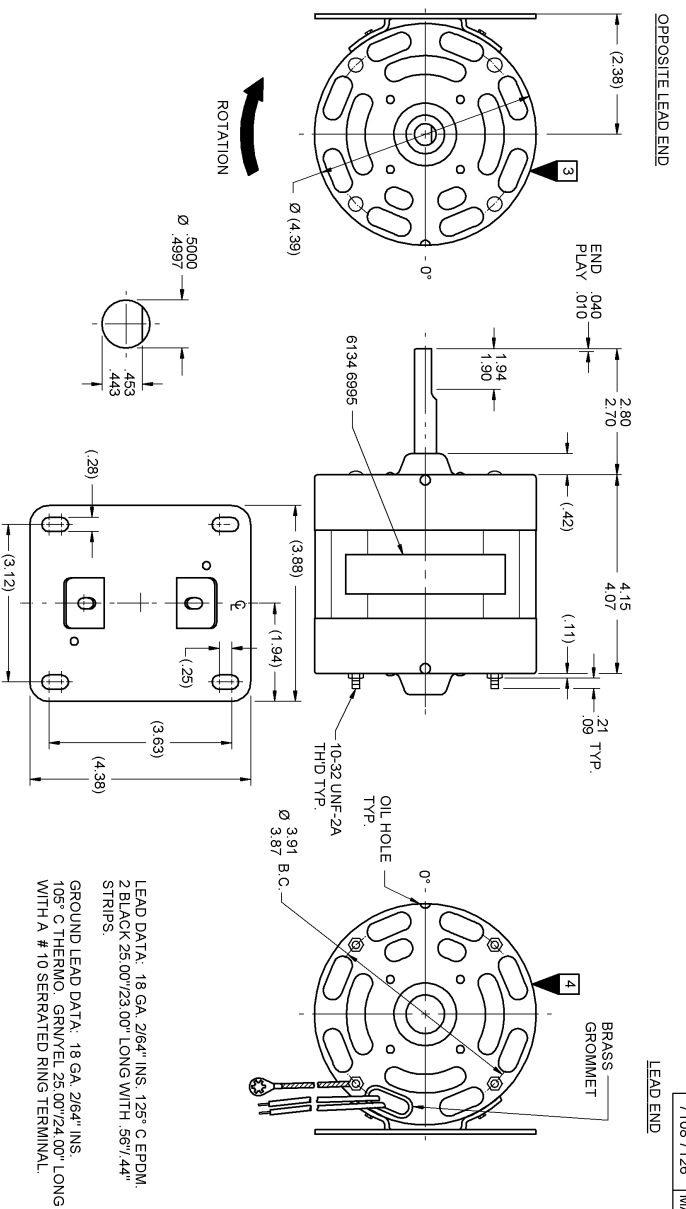
ECO	REV.	DATE	SPEC/CHECK
632082	0	11-20-03	LDC/LDC
632280	1	1-8-04	LDC/XXX
638798	2	11-11-08	GA/E/GAE
639627	3	5-7-09	M/R/M/R

A. SEE PACKAGING MANUAL PAGE 2 FOR PACKAGING PROCEDURES.

- 1 MOTOR/CARTON;
 - 24 MOTOR/LAYER;
 - 6 LAYERS/PALLET;
 - 144 MOTOR/PALLET.
- B. SEE DRAWING 8785 6079 SH. 1 FOR PALLET LAYOUT.
 C. CENTER LABEL, 6120 6611, ON END OF CARTON.
 D. PLACE PAMPHLET, 6122 4579, IN CARTON WITH MOTOR.

71xx xxxxC	71xx xxxx,M
------------	-------------

PRODUCTION TEST AT IDLE		PERFORMANCE TEST		115 VOLTS 60 HZ		1 PH		1/4 HP		LOADED		LOCKED		BREAK	
AMP	WATT	RPM	AMP	WATT	OZ/IN	RPM	AMP	WATT	OZ/IN	AMP	WATT	AMP	WATT	OZ/IN	OZ/IN
6.75	5.53	309.1	252.9	HIGH	1778	6.14	281	159	1600	7.16	483	54	10.57	687	190
HI-POT TEST 2000 VOLTS															
MAX LEAKAGE CURRENT 5 mA															



LEAD DATA: 18 GA. 2164" INS. 125" C EPDM.
 2 BLACK 25.00"/23.00" LONG WITH .56"/.44"
 STRIPS.

GROUND LEAD DATA: 18 GA. 2164" INS.
 105" C THERMO. GRN/VEL 25.00"/24.00" LONG
 WITH A # 10 SERATED RING TERMINAL.

7108 7126 = MADE IN U.S.A.
 7108 7126M = ASSEMBLED IN MEXICO

FASCO FASCO INDUSTRIES, INC. MOTOR DIVISION
 THERMALLY PROTECTED

V. 115 HZ 60 PH 1 AO ROT →
 HP 1/4 AMP 7.2 NO. 7108-7126
 TYPE UB81 INS CL B 40° C AMB RPM 1600
 DATE/BAR CODE AREA PER 8882 6003
 6134 6995 M REV. 1

SAFETY WARNING
 THIS MOTOR MUST BE OPERATED IN ACCORDANCE WITH THE RATED ELECTRICAL CODES TO PREVENT OVERHEATING AND ELECTRICAL SHOCK

LOCATE Ⓞ OF NAMEPLATE ON Ⓞ OF STATOR TO READ RIGHT FROM
 LEAD END OF MOTOR CENTER AT 0°.
 SIZE 3.50 X 1.00

SPECIAL INSTRUCTIONS: SHAFT IS BONDERIZED. PAMPHLET PACKED WITH MOTOR.

MOTORS PACKED MAX. PER SKID:	PALLET PACK: 144 CARTON PACK
CUSTOMER:	FASCO DISTRIBUTING CO.
PART NUMBER:	D1006
APPLICATION:	DIST. SALES
FINISH COLOR:	GRAY
MOTOR WEIGHT:	8.5 LBS.
ENVIRONMENT:	DRY
INSULATION CLASS:	B
MOTOR TYPE:	SHADED POLE
MOTOR NUMBER:	7108 7126
REV.	3