

Project Name: \_\_\_\_\_  
 Location: \_\_\_\_\_  
 Engineer: \_\_\_\_\_  
 Submitted to: \_\_\_\_\_  
 Submitted by: \_\_\_\_\_  
 Reference: \_\_\_\_\_

Approval: \_\_\_\_\_  
 Date: \_\_\_\_\_  
 Construction: \_\_\_\_\_  
 Unit #: \_\_\_\_\_  
 Drawing #: \_\_\_\_\_

## Performance

Indoor Unit Model No: CDXS24LVJU  
 Outdoor Unit Model No: \_\_\_\_\_  
 Rated Cooling Capacity (Btu/hr): 21000  
 Sensible Capacity (Btu/hr): N/A  
 Max/Min Cooling Capacity (Btu/hr / kW): databook/databook  
 Cooling Input Power (kW): 0.164  
 SEER: data book  
 Rated Heating Capacity (Btu/hr): 25400  
 Max/Min Heating Capacity (Btu/hr / kW): databook/databook  
 Heating Input Power (kW): 0.164  
 Heating COP (Btu/hr / Btu/hr): data book  
 HSPF: data book

Indoor Unit Type: Concealed Ceiling (Low Static) (Used on)  
 Condensing Unit Type: \_\_\_\_\_

Rated Cooling Conditions Indoor: 80°F DB/67°F WB  
 Outdoor: 95°F DB/75°F WB

Rated Heating Conditions Indoor: 70°F DB/60°F WB  
 Outdoor: 47°F DB/43°F WB

Rated Piping Length(ft) \_\_\_\_\_  
 Rated Height Separation(ft) \_\_\_\_\_

## Indoor Unit Details

Power Supply (V/Hz/Ph): 208-230/60/1ph  
 Power Supply Connections: L1, L2, Ground  
 Min Circuit Amps MCA (A): \_\_\_\_\_  
 Max Overcurrent Amps MFA (A): \_\_\_\_\_  
 Dimensions (HxWxD): 7-7/8x35-7/16x24-7/16  
 Panel (HxWxD): N/A  
 Net Weight (lbs): 60  
 Weight with Panel (lbs): \_\_\_\_\_

Airflow Rate (CFM wet coil) 565/523/477/395  
 Moisture Removal (pt/h): 2.9  
 Gas Pipe Connection (inch): 5/8  
 Liquid Pipe Connection (inch): 1/4  
 Condensate Connection (inch): 25/32  
 Sound Pressure Level (dBA): 38/36  
 Sound Power Level (dBA): -  
 Static Pressure Rated/Max (inWg) 0.16 / 0.16/0.16

## Condensing Unit Details

Power Supply (V/Hz/Ph): \_\_\_\_\_  
 Power Supply Connections: L1, L2, Ground  
 Min. Circuit Amps MCA (A): \_\_\_\_\_  
 Max. Overcurrent Amps MFA (A): \_\_\_\_\_  
 Max. Starting Current MSC(A): \_\_\_\_\_  
 Rated Load Amps RLA (A): \_\_\_\_\_  
 Dimensions (HxWxD): N/A  
 Net Weight (lbs): \_\_\_\_\_

Compressor Type: Inverter  
 Capacity Control Range (%): \_\_\_\_\_  
 Airflow Rate (CFM): N/A  
 Gas Pipe Connection (inch): \_\_\_\_\_  
 Liquid Pipe Connection (inch): \_\_\_\_\_  
 Sound Pressure Level (dBA): \_\_\_\_\_  
 Sound Power Level (dBA): \_\_\_\_\_

## System Details

Refrigerant Type: R-410A  
 Holding Refrigerant Charge (lbs): -  
 Additional Charge (oz/ft): -  
 Pre-charge Piping (Length ft): -  
 Max. Pipe Length (Total ft): data book

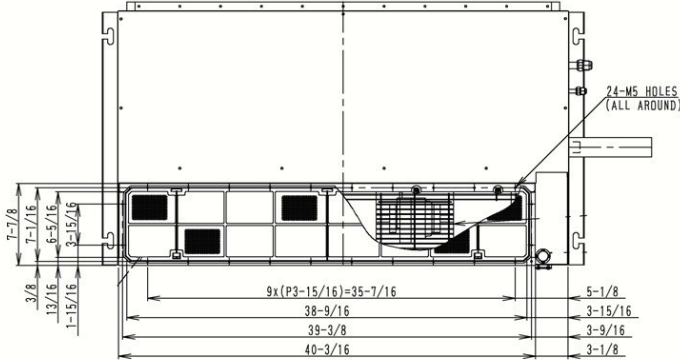
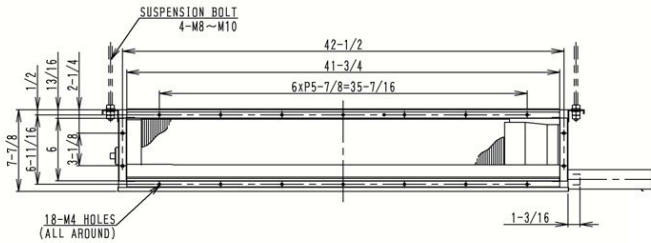
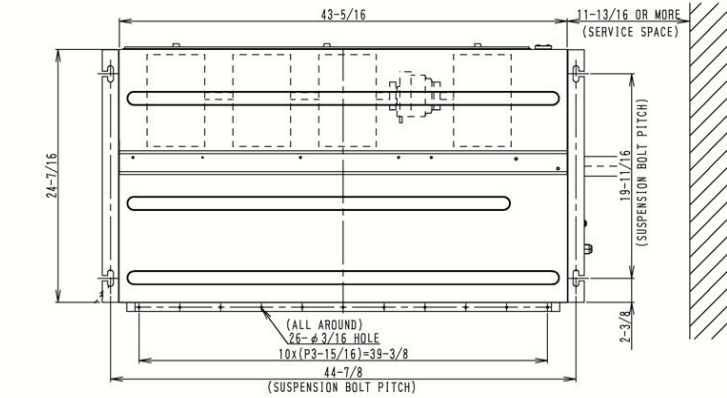
Max. Pipe Length (Vertical ft): data book  
 Cooling Operation Range (°F): 14 - 115  
 Cooling Range w/Baffle (°F): \_\_\_\_\_  
 Heating Operation Range (°F): 5 - 64  
 Heating Range w/Baffle (°F): \_\_\_\_\_

Project Name: \_\_\_\_\_  
 Location: \_\_\_\_\_  
 Engineer: \_\_\_\_\_  
 Submitted to: \_\_\_\_\_  
 Submitted by: \_\_\_\_\_  
 Reference: \_\_\_\_\_

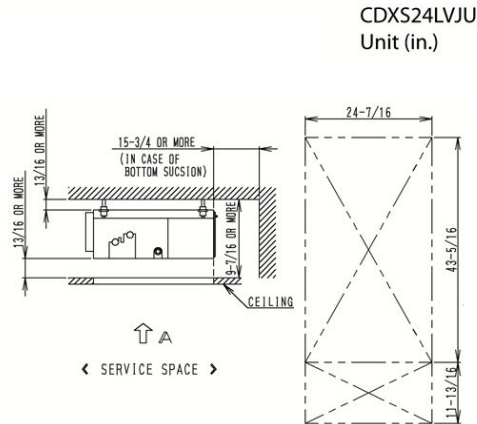
Approval: \_\_\_\_\_  
 Date: \_\_\_\_\_  
 Construction: \_\_\_\_\_  
 Unit #: \_\_\_\_\_  
 Drawing #: \_\_\_\_\_

## Dimensional Drawing - Indoor Unit

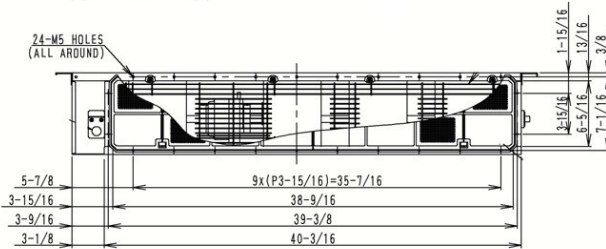
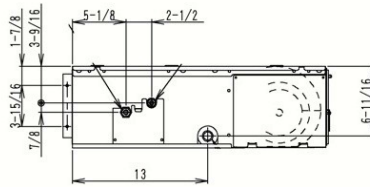
CDXS24LVJU



< IN CASE OF BOTTOM-SUCTION >



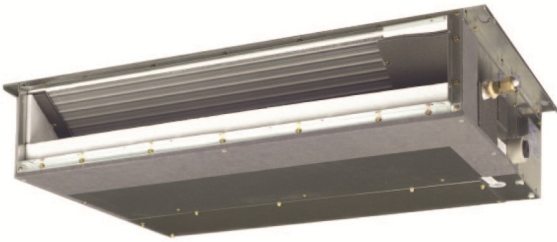
ALLOW VIEW A  
 INSPECTION DOOR  
 (CEILING OPENING)



Project Name: \_\_\_\_\_  
Location: \_\_\_\_\_  
Engineer: \_\_\_\_\_  
Submitted to: \_\_\_\_\_  
Submitted by: \_\_\_\_\_  
Reference: \_\_\_\_\_

Approval: \_\_\_\_\_  
Date: \_\_\_\_\_  
Construction: \_\_\_\_\_  
Unit #: \_\_\_\_\_  
Drawing #: \_\_\_\_\_

**CDXS24LVJU**



**CDXS24LVJU**

Std U.S. Warranty: 7yrs Compressor, 1yrs Parts

Std U.S. Warranty: 7yrs Compressor, 1yrs Parts