

# PRODUCT INFORMATION PACKET



Model No: BDH1106  
Catalog No: BDH1106  
1 HP Fan & Blower Motor, 1100 RPM, 3 Speed, 460 Volts, 48 Frame, OAO  
Direct Drive Motors



Regal and Century are trademarks of Regal Beloit Corporation or one of its affiliated companies.  
©2020 Regal Beloit Corporation, All Rights Reserved. MC017097E

The REGAL logo is a grey rectangular box with the word 'REGAL' in white, slanted capital letters. It is positioned on a blue and black halftone background that runs vertically down the right side of the page.

REGAL



**Nameplate Specifications**

Output HP	<b>1 Hp</b>	Output KW	<b>0.75 kW</b>
Frequency	<b>60 Hz</b>	Voltage	<b>460 V</b>
Current	<b>3.2 A</b>	Speed	<b>1100 rpm</b>
Service Factor	<b>1</b>	Phase	<b>1</b>
Duty	<b>Air Over</b>	Insulation Class	<b>B</b>
Frame	<b>48Y</b>	Enclosure	<b>Open Enclosed</b>
Thermal Protection	<b>Automatic</b>	Ambient Temperature	<b>40 °C</b>
UL	<b>Recognized</b>	CSA	<b>Y</b>
CE	<b>N</b>		

**Technical Specifications**

Electrical Type	<b>Permanent Split Capacitor</b>	Starting Method	<b>Across The Line</b>
Poles	<b>6</b>	Rotation	<b>Reversible</b>
Mounting	<b>Belly Band</b>	Motor Orientation	<b>Horizontal</b>
Drive End Bearing	<b>Ball</b>	Opp Drive End Bearing	<b>Ball</b>
Frame Material	<b>Rolled Steel</b>	Shaft Type	<b>Flat</b>
Overall Length	<b>11.09 in</b>	Frame Length	<b>5.50 in</b>
Shaft Diameter	<b>0.500 in</b>	Shaft Extension	<b>4.5 in</b>
Connection Drawing	<b>614131-270</b>	Outline Drawing	<b>BDH1106-S01</b>

This is an uncontrolled document once printed or downloaded and is subject to change without notice. Date Created:08/09/2020

**GENERAL INFORMATION:**

SHAFT RUNOUT: .001[.03] T.I.R. PER INCH LENGTH OF EXTENSION.

BEARINGS: BALL

MOUNTING POSITION: HORIZONTAL

**ELECTRICAL DATA:**

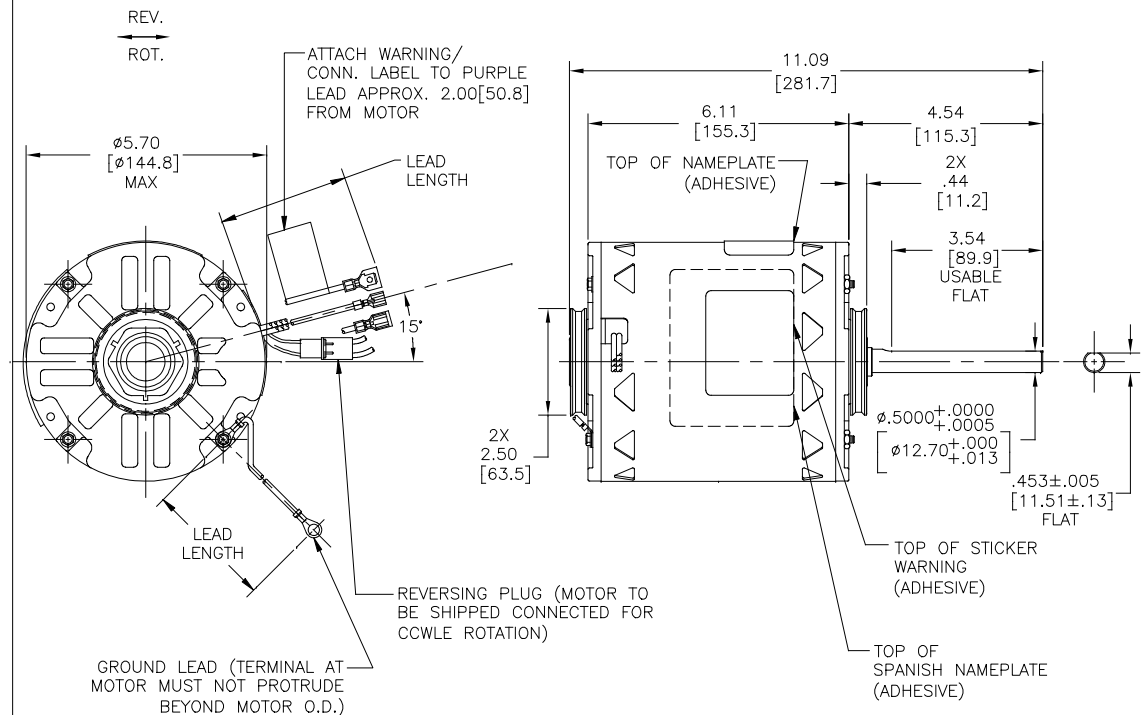
OVERLOAD PROTECTOR: AUTOMATIC RESET (T.I. 7AM 036)

LEADS: No. 18 GA .03[.8] THK XLP 125 °C INSUL

GROUND LEAD: No. 18 GA .03[.8] THK (GREEN) INSUL

**NOTES:**

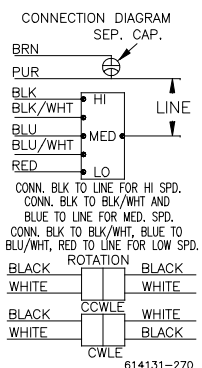
1. THE SYMBOL OF CTQ: ▲ (NO CTQ ON THIS DRAWING).
2. RoHS & REACH REQUIREMENT SEE EP000014\_5.1.



**NAMEPLATE DATA:**

MODEL: F48K47A01  
 CUST: P/N BDH1106  
 HP: 1  
 ROT: REVERSIBLE  
 RPM: 1100/3 SPD  
 TYPE: UF  
 FRAME: 48Y  
 VOLTS: 460  
 PH: 1  
 AMPS: 3.2  
 HZ: 60  
 INS: B  
 AMB: 40 °C  
 DUTY: AIR OVER  
 CAP: 15 MFD/370V  
 ENCL: OPEN  
 UL LOGO  
 CSA LOGO  
 THERMALLY PROTECTED

**EXTERNAL CONNECTION DIAGRAM**



GREEN (GRD)	12.0/14.0 [308/356]	.25[6.4] EYELET
BLACK & WHITE	3.0/5.0 [76/127]	REVERSING PLUG
BROWN	12.0/14.0 [308/356]	.25[6.4] FEMALE SPADE
PURPLE	12.0/14.0 [308/356]	.25[6.4] FEMALE SPADE
BLACK	36.0/39.0 [914/991]	.25[6.4] PRE-INSUL. FEMALE SPADE
BLACK/ WHITE	36.0/39.0 [914/991]	.25[6.4] PRE-INSUL. MALE TAB
BLUE	36.0/39.0 [914/991]	.25[6.4] PRE-INSUL. FEMALE SPADE
BLUE/WHITE	36.0/39.0 [914/991]	.25[6.4] PRE-INSUL. MALE TAB
RED	36.0/39.0 [914/991]	.25[6.4] PRE-INSUL. FEMALE SPADE
COLOR	LENGTH	TERMINAL OR STRIP LENGTH

REGAL-BELOIT CORPORATION (RBC) PROVIDES TECHNICAL ASSISTANCE TO OUR CUSTOMERS IN SEVERAL AREAS. SINCE RBC DOES NOT RECEIVE ALL DATA CONCERNING THE USE AND APPLICATION OF THE MOTOR, THE SUITABILITY OF THE MOTOR FOR THE APPLICATION MUST BE DETERMINED BY THE CUSTOMER.

DIMENSIONS WITHOUT TOLERANCES ARE FOR REFERENCE ONLY.

MAIN FR.-OLE	OPEN
END FR.-OLE	OPEN
MAIN FR.-LE	OPEN
END FR.-LE	OPEN

CUSTOMER	DISTRIBUTION SERVICE
----------	----------------------

PERFORMANCE CURVE NO.	TORQUE @ 1100 RPM (25°C)	APPROVED SAMPLE	UL COMPONENT	CSA
C31341	85.2 OZ. FT.	97AC501A	E46412 PRGY2	LR43341 4211-01

LEAD DATA		ENCLOSURE	
DRAWING REVISION BY E ANNASUN	REVISION BY E ANNASUN	DATE 03-05-2020	DRAWN BY: CARLOS CARRILLO
ECCO-0182192	APPROVED BY KEYUN.GONG	DATE 03-05-2020	DATE: 08-05-2010
ECCO DESCRIPTION @ZONE C2: ADD SPANISH NAMEPLATE	COPYRIGHT REGAL-BELOIT AMERICA, INC. ALL RIGHTS RESERVED. PROPRIETARY AND CONFIDENTIAL INFORMATION - THIS DOCUMENT IS THE PROPERTY OF REGAL-BELOIT AMERICA, INC. (OWNER) AND CONTAINS OWNER'S PROPRIETARY INFORMATION. ANY REPRODUCTION OR OTHER USE WITHOUT THE WRITTEN PERMISSION OF REGAL-BELOIT AMERICA, INC. IS STRICTLY PROHIBITED. BY RECEIVING IT, YOU AGREE THAT IT AND/OR ANY PART OF IT SHALL NOT BE DISCLOSED TO ANY PERSON, CORPORATION OR OTHER ENTITY, SUPPLIER, AND/OR USER, SOLELY AS EXPRESSLY APPROVED IN WRITING BY ADVANCE BY OWNER. THIS DOCUMENT SHALL BE RETURNED TO OWNER UPON REQUEST. IT MAY BE SUBJECT TO CERTAIN RESTRICTIONS UNDER APPLICABLE EXPORT CONTROL LAWS AND REGULATIONS.		DESCRIPTION MODEL-RFHP-48FR OUTLINE
THIRD ANGLE PROJECTION	SIZE DWG NO C	MATERIAL	PROCESS/FINISH
		BDH1106	SHEET 1