

PRODUCT INFORMATION PACKET

Model No: 056C17D2072
Catalog No: B317
1/2,1725,DP,56,1/60/115/208-230
Open Drip Proof (ODP)



Regal and Marathon are trademarks of Regal Beloit Corporation or one of its affiliated companies.
©2018 Regal Beloit Corporation, All Rights Reserved. MC017097E





Nameplate Specifications

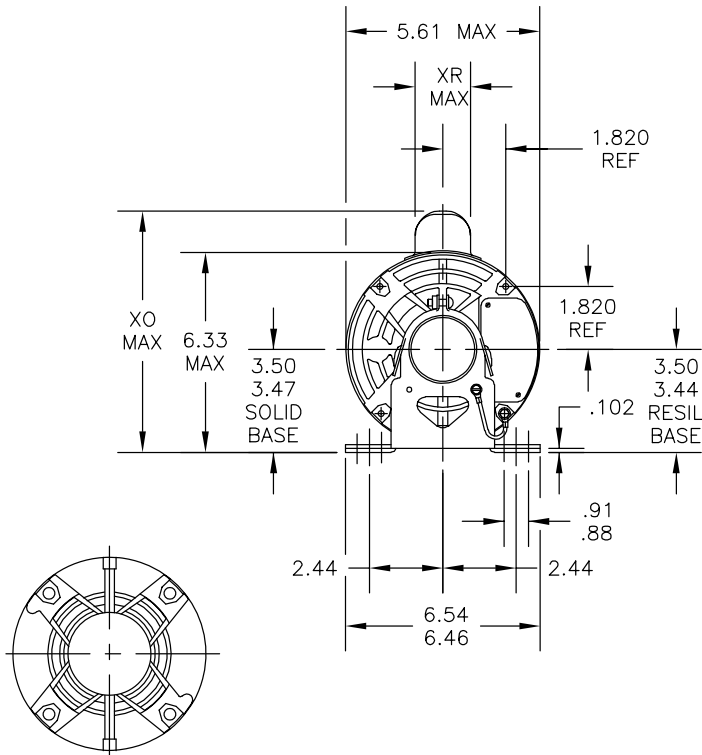
Output HP	0.50 Hp	Output KW	0.37 kW
Frequency	60 Hz	Voltage	115/208-230 V
Current	8.0/4.1-4.0 A	Speed	1725 rpm
Service Factor	1.25	Phase	1
Efficiency	66 %	Duty	Continuous
Insulation Class	B	Design Code	NO DESIGN CODE
KVA Code	H	Frame	56
Enclosure	Drip Proof	Overload Protector	Automatic
Ambient Temperature	40 °C	Drive End Bearing Size	6203
Opp Drive End Bearing Size	6203	UL	Recognized
CSA	Y	CE	N
IP Code	22		

Technical Specifications

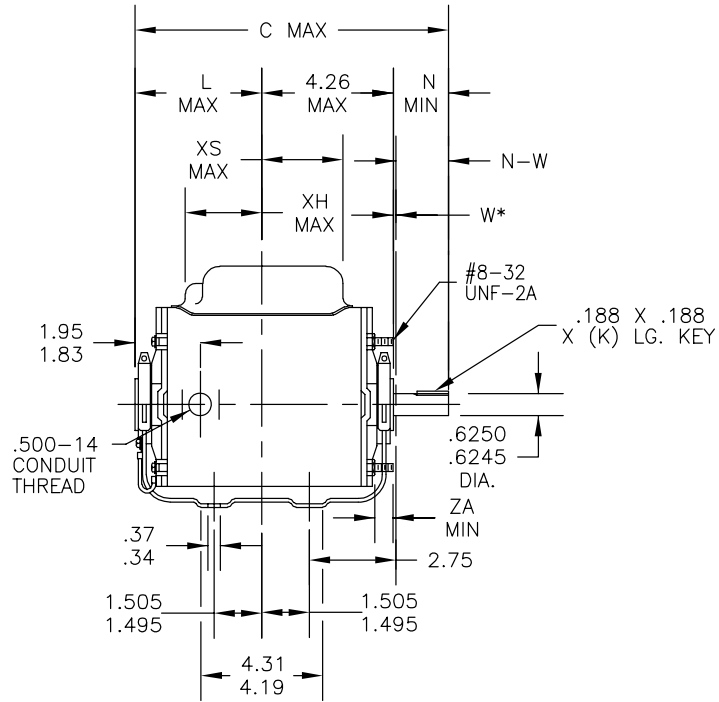
Electrical Type	Capacitor Start Induction Run	Starting Method	Across The Line
Poles	4	Rotation	Selective Counterclockwise
Mounting	Resilient Base - Extended Studs	Motor Orientation	Horizontal
Drive End Bearing	Ball	Opp Drive End Bearing	Ball
Frame Material	Rolled Steel	Shaft Type	T
Overall Length	10.32 in	Shaft Diameter	0.625 in
Shaft Extension	1.88 in	Assembly/Box Mounting	F1 Only
Outline Drawing	52A111270P1	Connection Diagram	52A105383AA

This is an uncontrolled document once printed or downloaded and is subject to change without notice. Date Created: 06/29/2018

52A111270



VIEW SHOWING
PE VENTILATION
OPENINGS

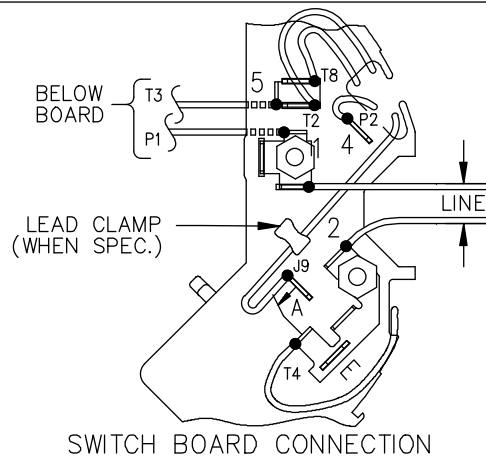
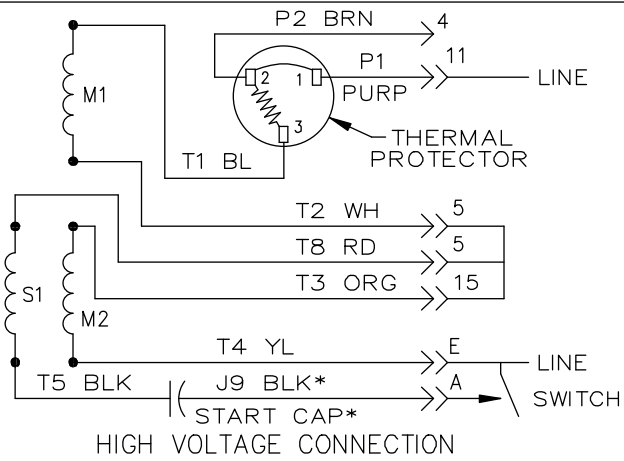
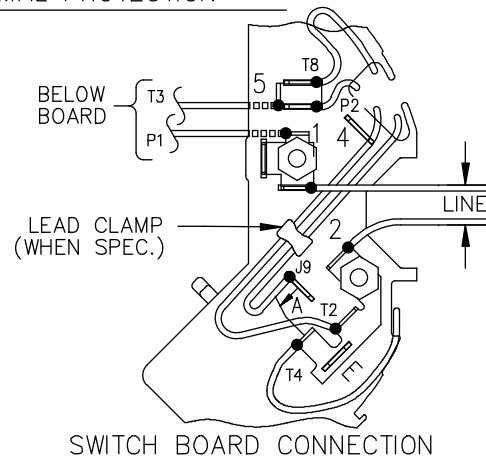
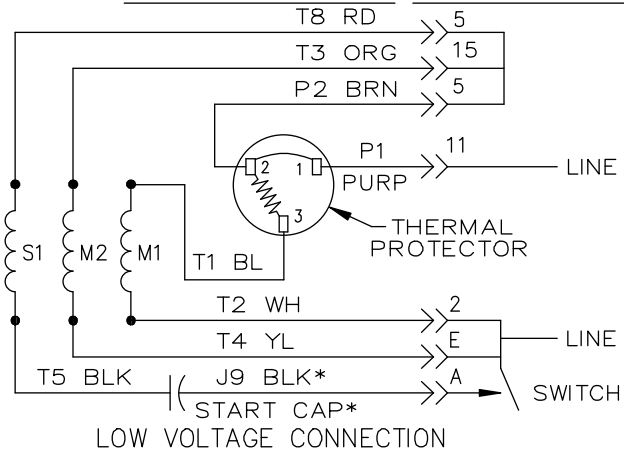


*W IS A CLEARANCE DUE TO VARIATION IN PARTS & ASSEMBLY.

2	KC	37	56	10.72	1.38	4.63	1.88	2.01/1.79	3.07	7.85	1.60	2.70	.69	6.62
1	KC	36	56	10.32	1.38	4.23	1.88	2.01/1.79	3.10	8.20	2.10	2.64	.72	6.22
PT	TYPE	RBC SIZE	NEMA FR	C	K	L	N	N-W	XH	XO	XR	XS	ZA	MIN. SHELL

F	ECS DIMENSIONS ADDED PER ECO-0059212	PVN	9/5/14	DS	TOLERANCES UNLESS SPECIFIED									DRAWN DR 12/16/04	
5	REDRAWN IN DRAFT SIGHT - NO CHANGES	UD	11/06/12	PKG	DEC.	INCHES								CHK	
4	CHANGED 'ZA' DIMENSION PER IS12-5156	UD	11/06/12	DS	.X	±0.1	APPD DR 12/16/04								
3	CHG TO RBC FORMAT PER IS05-1777	PKG	04/28/06		.XX	±0.02	SCALE 1=1								
2	CHG CLAMP BOLT TO #8-32 PER IS05-0952	RK	04/15/05		.XXX	±0.005	REF								
1	ADDED P2	DS	12/21/04		.XXXX	±0.0005	FMF								
NO.	REVISION	BY & DATE	CHK	ANG	±1.0	FINISH	PREV								
THIS DRAWING IN DESIGN AND DETAIL IS OUR PROPERTY AND MUST NOT BE USED EXCEPT IN CONNECTION WITH OUR WORK ALL RIGHTS OF DESIGN AND INVENTION ARE RESERVED THIS IS AN ELECTRONICALLY GENERATED DOCUMENT - DO NOT SCALE THIS PRINT				RFP	CAD FILE	52A111270	SIZE	DRAWING NO.	REV.						
				DIST			A	52A111270	F						

EITHER ROTATION, DUAL VOLTAGE, TYPE KC OR KH, WITH THERMAL PROTECTION



NOTE #1 - START CAP & J9 WHEN SPECIFIED (*). IF NO CAPACITOR (KH), CONNECT T5 DIRECTLY TO SWITCH (A). WHEN MORE THAN ONE CAPACITOR IS USED, CONNECT IN PARALLEL.

NOTE #2 - TO REVERSE ROTATION, INTER CHANGE RD(T8) AND BLK(J9-KC OR T5-KH) LEADS.

SWITCH REF. - 115D958AB	CONNECTION LABEL	CCW ROTATION: NP52X332051AA
		CW ROTATION: NP52X332051AC

NO.	REVISION	BY & DATE	CHK	TOLERANCES UNLESS SPECIFIED		FINISH	DRAWN M.D.P 06/29/87					
				DEC.	INCHES			DRAWING NO.				
				.X	±0.1	REGAL-BELOIT CORPORATION TITLE CONNECTION DIAGRAM 30 FRAME SWITCH REDESIGN	CHK					
				.XX	±0.02		SCALE 1=1					
5	ADDED CONNECTION LABEL PER ECO-0030779	UD 02/06/13	PKG	.XXX	±0.005	MAT'L.	APPD M.D.P 03/26/96					
4	UPDATED PER ISO7-0150	MD 01/23/07		.XXXX	±0.0005		REF					
				ANG	±1.0	PREV						
THIS DRAWING IN DESIGN AND DETAIL IS OUR PROPERTY AND MUST NOT BE USED EXCEPT IN CONNECTION WITH OUR WORK. ALL RIGHTS OF DESIGN AND INVENTION ARE RESERVED. THIS IS AN ELECTRONICALLY GENERATED DOCUMENT - DO NOT SCALE THIS PRINT				RFP	CAD FILE	52A105383AA	SIZE	A	DRAWING NO.	52A105383AA	REV.	5
				DIST								