

# PRODUCT INFORMATION PACKET



Model No: 9616  
Catalog No: 9616  
1/6 HP Fan & Blower Motor, 1550 RPM, 115 Volts, 42 Frame, OAO  
Direct Drive Motors



Regal and Century are trademarks of Regal Beloit Corporation or one of its affiliated companies.  
©2020 Regal Beloit Corporation, All Rights Reserved. MC017097E

REGAL





### Nameplate Specifications

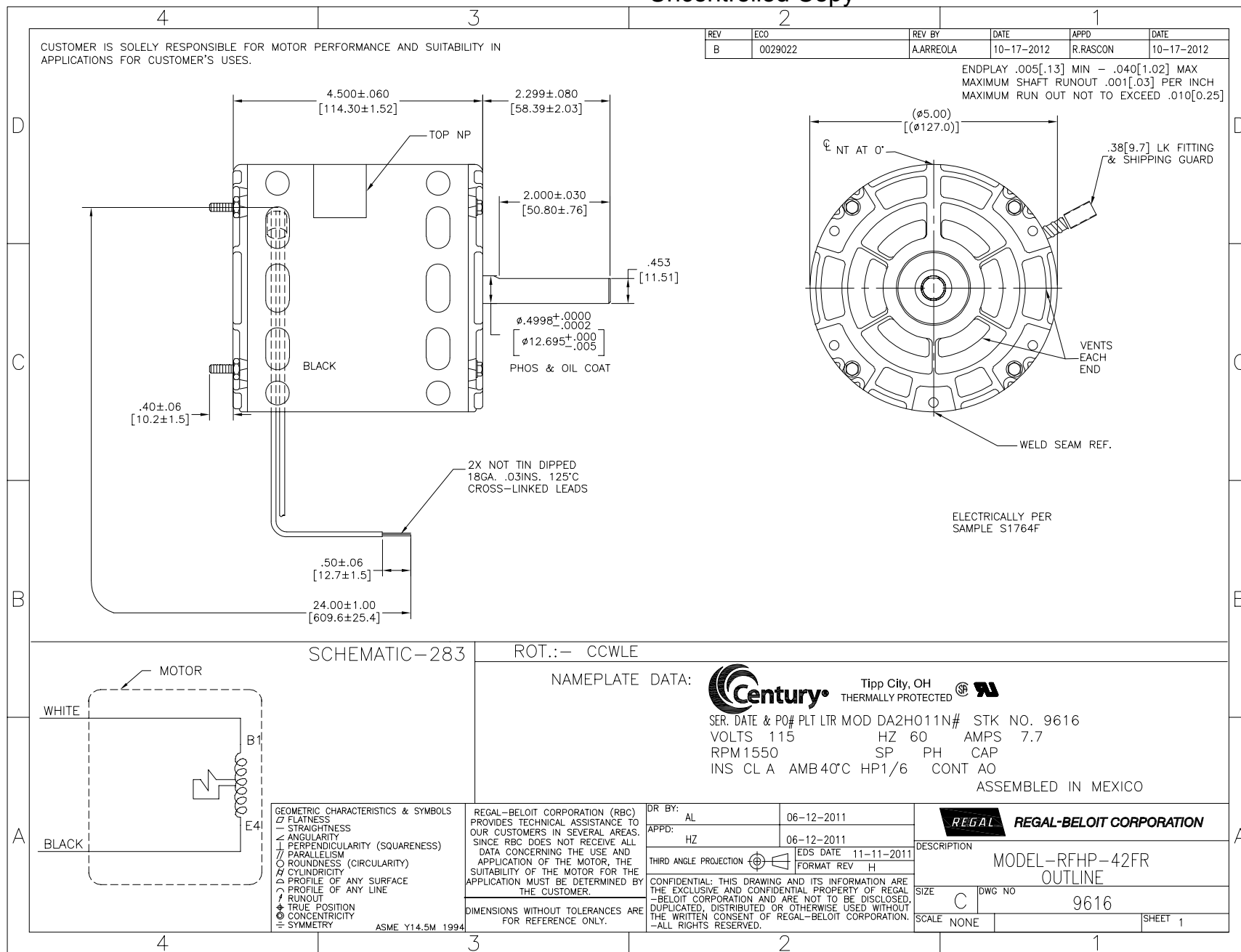
Output HP	1/6 Hp	Output KW	0.13 kW
Frequency	60 Hz	Voltage	115 V
Current	7.7 A	Speed	1550 rpm
Service Factor	1	Phase	1
Duty	Continuous Air Over	Insulation Class	A
Frame	42Y	Enclosure	Open Enclosed
Thermal Protection	Automatic	Ambient Temperature	40 °C
UL	Recognized	CSA	Y
CE	N		

### Technical Specifications

Electrical Type	Shaded Pole	Starting Method	Across The Line
Poles	4	Rotation	Counterclockwise Lead End
Mounting	Extended Studs	Motor Orientation	Horizontal
Drive End Bearing	Sleeve	Opp Drive End Bearing	Sleeve
Frame Material	Steel	Shaft Type	Flat
Overall Length	6.80 in	Frame Length	3.92 in
Shaft Diameter	0.500 in	Shaft Extension	2.3 in
Outline Drawing	9616-S01		

This is an uncontrolled document once printed or downloaded and is subject to change without notice. Date Created:27/05/2020





GEOMETRIC CHARACTERISTICS & SYMBOLS

- FLATNESS
- STRAIGHTNESS
- ∠ ANGULARITY
- ⊥ PERPENDICULARITY (SQUARENESS)
- ∥ PARALLELISM
- ROUNDNESS (CIRCULARITY)
- ⌀ CYLINDRICITY
- △ PROFILE OF ANY SURFACE
- △ PROFILE OF ANY LINE
- ↑ RUNOUT
- ⊕ TRUE POSITION
- ⊙ CONCENTRICITY
- ⊖ SYMMETRY

ASME Y14.5M 1994

REGAL-BELOIT CORPORATION (RBC)  
PROVIDES TECHNICAL ASSISTANCE TO  
OUR CUSTOMERS IN SEVERAL AREAS.  
SINCE RBC DOES NOT RECEIVE ALL  
DATA CONCERNING THE USE AND  
APPLICATION OF THE MOTOR, THE  
SUITABILITY OF THE MOTOR FOR THE  
APPLICATION MUST BE DETERMINED BY  
THE CUSTOMER.

DIMENSIONS WITHOUT TOLERANCES ARE  
FOR REFERENCE ONLY.

**REGAL** REGAL-BELOIT CORPORATION

DESCRIPTION

MODEL-RFHP-42FR  
OUTLINE

SIZE C DWG NO 9616

SCALE NONE SHEET 1



