

# PRODUCT INFORMATION PACKET



Model No: 6905

Catalog No: 6905

1/2 HP Condenser Fan Motor, 1100/850 RPM, 2 Speed/PWM, 460 Volts, 48 Frame, TEAO  
Condenser Fans Motors



Regal and Genteq are trademarks of Regal Beloit Corporation or one of its affiliated companies.  
©2020 Regal Beloit Corporation, All Rights Reserved. MC017097E





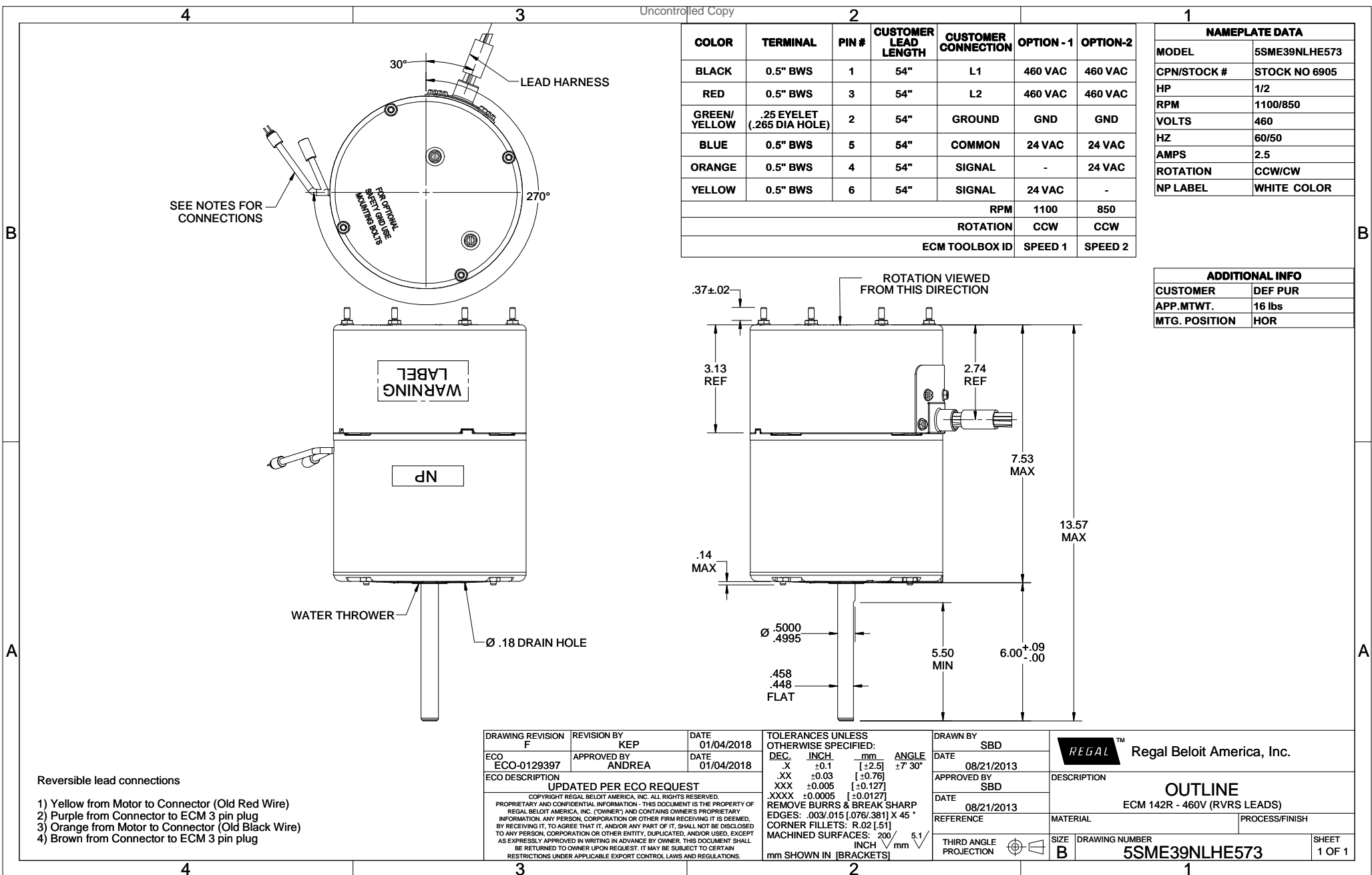
**Nameplate Specifications**

Output HP	1/2 Hp	Output KW	0.37 kW
Frequency	60 Hz	Voltage	460 V
Current	2.5 A	Speed	1100/850 rpm
Service Factor	1	Phase	1
Duty	Continuous Air Over	Insulation Class	B
Frame	48	Enclosure	Totally Enclosed Air Over
Thermal Protection	No	Ambient Temperature	60 °C
UL	Recognized	CSA	N
CE	N		

**Technical Specifications**

Electrical Type	Electronically Commutated Motor	Poles	12
Rotation	Reversible	Mounting	Extended Studs
Motor Orientation	Horizontal	Drive End Bearing	Ball
Opp Drive End Bearing	Ball	Frame Material	Rolled Steel
Shaft Type	Flat	Overall Length	13.57 in
Frame Length	3.82 in	Shaft Diameter	0.500 in
Shaft Extension	6.00 in	Thru-bolts Extension	0.14 in
Connection Drawing	N/R	Outline Drawing	5SME39NLHE573

This is an uncontrolled document once printed or downloaded and is subject to change without notice. Date Created:06/11/2020



COLOR	TERMINAL	PIN #	CUSTOMER LEAD LENGTH	CUSTOMER CONNECTION	OPTION - 1	OPTION-2
BLACK	0.5" BWS	1	54"	L1	460 VAC	460 VAC
RED	0.5" BWS	3	54"	L2	460 VAC	460 VAC
GREEN/YELLOW	.25 EYELET (.265 DIA HOLE)	2	54"	GROUND	GND	GND
BLUE	0.5" BWS	5	54"	COMMON	24 VAC	24 VAC
ORANGE	0.5" BWS	4	54"	SIGNAL	-	24 VAC
YELLOW	0.5" BWS	6	54"	SIGNAL	24 VAC	-
					RPM	1100 850
					ROTATION	CCW CCW
					ECM TOOLBOX ID	SPEED 1 SPEED 2

NAMEPLATE DATA	
MODEL	5SME39NLHE573
CPN/STOCK #	STOCK NO 6905
HP	1/2
RPM	1100/850
VOLTS	460
HZ	60/50
AMPS	2.5
ROTATION	CCW/CW
NP LABEL	WHITE COLOR

ADDITIONAL INFO	
CUSTOMER	DEF PUR
APP.MTWT.	16 lbs
MTG. POSITION	HOR

Reversible lead connections

- 1) Yellow from Motor to Connector (Old Red Wire)
- 2) Purple from Connector to ECM 3 pin plug
- 3) Orange from Motor to Connector (Old Black Wire)
- 4) Brown from Connector to ECM 3 pin plug

DRAWING REVISION F	REVISION BY KEP	DATE 01/04/2018
ECO ECO-0129397	APPROVED BY ANDREA	DATE 01/04/2018
ECO DESCRIPTION UPDATED PER ECO REQUEST		
<small>COPYRIGHT REGAL BELOIT AMERICA, INC. ALL RIGHTS RESERVED.                  PROPRIETARY AND CONFIDENTIAL INFORMATION - THIS DOCUMENT IS THE PROPERTY OF                  REGAL BELOIT AMERICA, INC. ("OWNER") AND CONTAINS OWNER'S PROPRIETARY                  INFORMATION. ANY PERSON, CORPORATION OR OTHER FIRM RECEIVING IT IS DEEMED,                  BY RECEIVING IT, TO AGREE THAT IT, AND/OR ANY PART OF IT, SHALL NOT BE DISCLOSED                  TO ANY PERSON, CORPORATION OR OTHER ENTITY, DUPLICATED, AND/OR USED, EXCEPT                  AS EXPRESSLY APPROVED IN WRITING IN ADVANCE BY OWNER. THIS DOCUMENT SHALL                  BE RETURNED TO OWNER UPON REQUEST. IT MAY BE SUBJECT TO CERTAIN                  RESTRICTIONS UNDER APPLICABLE EXPORT CONTROL LAWS AND REGULATIONS.</small>		

TOLERANCES UNLESS OTHERWISE SPECIFIED:		
DEC.	INCH	mm
.X	+0.1	[+2.5]
.XX	+0.03	[+0.76]
.XXX	+0.005	[+0.127]
.XXXX	+0.0005	[+0.0127]
REMOVE BURRS & BREAK SHARP		
EDGES: .003/.015 [.076/.381] X 45 °		
CORNER FILLETS: R.02 [.51]		
MACHINED SURFACES: 200 / 5.1		
mm SHOWN IN [BRACKETS]		

DRAWN BY SBD	DATE 08/21/2013
APPROVED BY SBD	DATE 08/21/2013
REFERENCE	
THIRD ANGLE PROJECTION	

Regal Beloit America, Inc.	
DESCRIPTION <b>OUTLINE</b> ECM 142R - 460V (RVRS LEADS)	
MATERIAL	PROCESS/FINISH
SIZE <b>B</b>	DRAWING NUMBER <b>5SME39NLHE573</b>
	SHEET 1 OF 1