

PRODUCT INFORMATION PACKET



Model No: 6505V
Catalog No: 6505V
1/2 HP Fan & Blower Motor, 1050 RPM, 120/240 Volts, 48 Frame, OAO
Direct Drive Motors



Regal and Genteq are trademarks of Regal Beloit Corporation or one of its affiliated companies.
©2020 Regal Beloit Corporation, All Rights Reserved. MC017097E





Nameplate Specifications

Output HP	1/2 Hp	Output KW	0.37 kW
Frequency	60 Hz	Voltage	120/240 V
Current	7.7/4.3 A	Speed	1050 rpm
Service Factor	1	Phase	1
Duty	Continuous Air Over	Insulation Class	B
Frame	48	Enclosure	Open Air Over
Thermal Protection	No	Ambient Temperature	40 °C
UL	No	CSA	N
CE	N		

Technical Specifications

Electrical Type	Electronically Commutated Motor	Poles	12
Rotation	Counterclockwise/Clockwise	Mounting	Round
Motor Orientation	Vsd	Drive End Bearing	Ball
Opp Drive End Bearing	Ball	Frame Material	Rolled Steel
Shaft Type	Flat	Overall Length	11.21 in
Frame Length	4.07 in	Shaft Diameter	0.500 in
Shaft Extension	5.00 in	Thru-bolts Extension	0 in
Connection Drawing	N/R	Outline Drawing	5SME39HXL3224

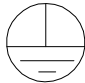
This is an uncontrolled document once printed or downloaded and is subject to change without notice. Date Created:06/11/2020

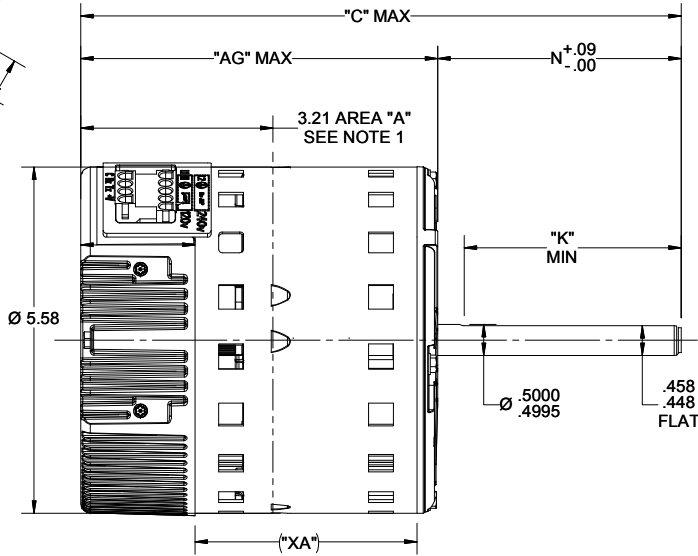
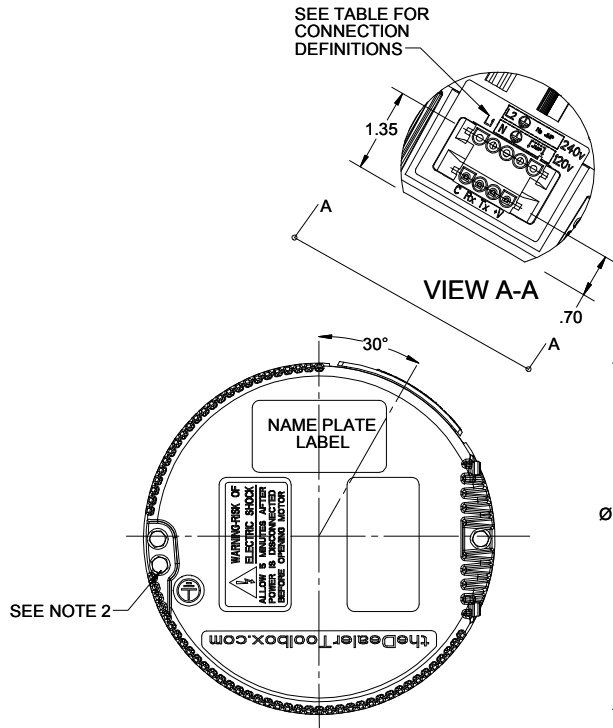
4

3

2

1

CONNECTOR ID	DESCRIPTION
+V	12V INPUT
Tx	SERIAL DATA OUTPUT
Rx	SERIAL DATA INPUT
C	COMMON
JMP	JUMPER APPLICATION FOR 120VAC LINE INPUT ONLY SEE NOTE 4
	GROUND
N	AC LINE
L1	AC LINE



NOTES:

- BELLY BAND MUST BE PLACED WITHIN AREA "A" ONLY
- OPTIONAL EXTERNAL #8 SELF TAPPING GROUND SCREW AND TERMINAL MAY BE PROVIDED BY CUSTOMER AT LOCATION SHOWN.
- SUGGESTED MATING CONNECTORS:
5 PIN CONNECTOR - TYCO 350809-1
4 PIN CONNECTOR - TYCO 350779-1
SOCKET (TIN) - FOR .060-.130 WIRE INS. DIA RANGE - TYCO 350536-1
FOR .130-.200 WIRE INS. DIA RANGE - TYCO 350537-1
- WARNING: APPLYING 240VAC LINE INPUT WITH JUMPER APPLIED WILL PERMANENTLY DAMAGE UNIT.

NAMEPLATE DATA	
MODEL	5SME39HXL3224
CPN/STOCK NO	6505V
HP	1/2
RPM	1050
VOLTS	120/240
HZ	60/50
AMPS	7.7/4.3
ROTATION	CCW/CW
MTG. POSITION	VSD


VENTILATION SYSTEM	
SHELL VENTS	OPEN
ENDSHIELD (LE)	NA
ENDSHIELD (OLE)	CLOSED

11.21	5.00	4.50	4.07	6.21
"C"	"N"	"K"	"XA"	"AG"

DRAWING REVISION C	REVISION BY NV	REV DATE/© DATE 05/31/2019
ECO ECO-0168087	APPROVED BY VB	DATE 05/31/2019
ECO DESCRIPTION ADDED CPN # AS PER NMR/ECO-0168087		
<small>COPYRIGHT (PER REVISION DATE) REGAL BELOIT AMERICA, INC. ALL RIGHTS RESERVED. PROPRIETARY AND CONFIDENTIAL INFORMATION - THIS DOCUMENT IS THE PROPERTY OF REGAL BELOIT AMERICA, INC. (OWNER) AND CONTAINS OWNERS PROPRIETARY INFORMATION. ANY PERSON, CORPORATION OR OTHER FIRM RECEIVING IT IS DEEMED, BY RECEIVING IT, TO AGREE THAT IT, AND/OR ANY PART OF IT, SHALL NOT BE DISCLOSED TO ANY PERSON, CORPORATION OR OTHER ENTITY, DUPLICATED, AND/OR USED, EXCEPT AS EXPRESSLY APPROVED IN WRITING IN ADVANCE BY OWNER. THIS DOCUMENT SHALL BE RETURNED TO OWNER UPON REQUEST. IT MAY BE SUBJECT TO CERTAIN RESTRICTIONS UNDER APPLICABLE EXPORT CONTROL LAWS AND REGULATIONS.</small>		

PRIMARY DIMENSIONS ARE INCH
DIMENSIONS IN [BRACKETS]
ARE FOR REFERENCE ONLY

DRAWN BY KEP
DATE 11/22/2017
APPROVED BY ANDREA
DATE 11/22/2017
REFERENCE -
THIRD ANGLE PROJECTION

 Regal Beloit America, Inc.	
DESCRIPTION OUTLINE ECM EVERGREEN (3.0) 1/2 HP, 120/240V	
MATERIAL	PROCESS/FINISH
SIZE B	DRAWING NUMBER 5SME39HXL3224
SHEET 1 OF 1	

4

3

2

1