

❖ **Part 4: Comprehension Multiple Choice**

Choose the best answer for each question below.

- Which of the following does not occur in the story?
  - Lina gets a job working for the mayor.
  - Lina and Clary talk to Sadge, while Sadge is panicking.
  - Lina finds a mysterious paper that was in a locked safe.
  - Lina gets scolded by a guard at the mayor's office.
- Choose the best word to describe Doon at the end of the story.
  - Worried
  - Insecure
  - Content
  - Timid
- Choose the best words to describe Lina.
  - Loving and loyal.
  - Talkative and trusting.
  - Foolish and thoughtless.
  - Over-confident and stiff.
- How does Doon react upon seeing the general?
  - He is encouraged.
  - He is horrified.
  - He understands it immediately.
  - He is happy.
- How does Mrs. Murdo help Lina and her father?
  - She brings them dinner each night.
  - She gives them a lot of money.
  - She works at Granny's shop.
  - She keeps an eye on Granny when Lina is away.
- What are some effects of the longest blizzard?
 

all that apply.

  - People start talking about moving to other cities.
  - People question the mayor's authority.
  - The mayor calls a town meeting.
  - The streets become quieter.

❖ **Part 5: Comprehension & Analysis Short Answer**

Answer the following questions in complete sentences.

- Describe one of the characters using at least three adjectives. Explain your choices.

\_\_\_\_\_

\_\_\_\_\_

\_\_\_\_\_

THE CITY OF EMBER  
Assessment #1: Chapters 1-8

Name \_\_\_\_\_ Date \_\_\_\_\_

❖ **Part 1: Vocabulary Matching**

Match the words with their definitions by writing the correct letters on the lines.

- |                    |   |
|--------------------|---|
| 1. prosper _____   | A. sharp, biting, and aromatic                      |
| 2. pungent _____   | B. gesturing, making a movement to signal something |
| 3. summon _____    | C. flourish, thrive                                 |
| 4. beckoning _____ | D. maze, labyrinth                                  |
| 5. antics _____    | E. peeks and frowns                                 |
| 6. labyrinth _____ | F. kindle, awaken                                   |

❖ **Part 2: Vocabulary Fill-in-the-Blank**

Choose the word that best completes each sentence below.

- The old man looked \_\_\_\_\_ but he was actually our kindest neighbor.
  - wry
  - disgraceful
  - gruff
  - aged
- The ancient tree's branches were \_\_\_\_\_ and rough, but we loved looking at its uniqueness.
  - beckoning
  - muddled
  - defiant
  - gnarled

❖ **Part 3: Vocabulary**

Write two sentences below.

- weary      belligerent
- \_\_\_\_\_
  - \_\_\_\_\_



\_\_\_\_\_ from the story. Write about at least two \_\_\_\_\_ and more muddled. \_\_\_\_\_ paper from a safe in the closet.



\_\_\_\_\_ do you feel a strong emotion? (The emotion \_\_\_\_\_ empathy, etc.) Explain what emotion it was, and \_\_\_\_\_

\_\_\_\_\_ less that you believe Doon has. Explain your \_\_\_\_\_

**ASSESSMENTS included:**

- 2 Comprehension and Vocabulary Tests
  - Test #1: Chapters 1-8
  - Test #2: Chapters 9-20
- Mix of question types

## Vocabulary Words and Definitions: THE CITY OF EMBER

CHAPTER(S)	PAGE #	WORD	DEFINITION
Prologue: The Instructions 1: Assignment Day	1	weary	worn out and exhausted
	11	labyrinth	maze or web
	13	prosper	flourish, thrive
	13	disgraceful	shameful and dishonorable
2: A Message to the Mayor	20	fuming	seething, furious
	27	reverberating	echoing and vibrating
	35	serene	peaceful
	38	antics	pranks and foolery
3: Under Ember	40	anticipation	excitement and suspense
	42	turbulent	stormy and chaotic
	44	immense	huge
	48	wry	ironic and mocking
4: Something Lost, Nothing Found	59	pungent	sharp, biting, and aromatic
	60	gruff	grouchy and abrupt
	66	singed	scorched
	66	enterprise	endeavor or plan
5: On Night Street 6: The Box in the Closet	70	muddled	confused and jumbled up
	77	defiant	feisty and disobedient
	79	summon	kindle or awaken
	87	incomprehensible	unclear and impossible to understand
7: A Message Full of Holes 8: Explorations	96	painstakingly	very carefully and meticulously
	100	disorderly	disorganized, messy
	104	beckoning	gesturing, making a movement toward something
	117	gnarled	twisted, bent, and misshapen
9: The Door in the Roped-Off Tunnel 10: Blue Sky and Goodbye	129	astonished	amazed and surprised
	130	glumly	grimly, unhappily
	131	ambled	straggled
	132	lurking	hiding and lying in wait
11: Lizzie's Groceries 12: A Dreadful Discovery	145	misfortune	problems, tragedies
	151	gleamed	glittered
	152	delectable	delicious and mouthwatering
	159	shrill	high-pitched and piercing

## Vocabulary Words and Definitions: THE CITY OF EMBER

CHAPTER(S)	PAGE #	WORD	DEFINITION
Prologue: The Instructions 1: Assignment Day	1	weary	
	11	labyrinth	
	13	prosper	
	13	disgraceful	
2: A Message to the Mayor	20	fuming	
	27	reverberating	
	35	serene	
	38	antics	
3: Under Ember	40	anticipation	
	42	turbulent	
	44	immense	
	48	wry	
4: Something Lost, Nothing Found	59	pungent	
	60	gruff	
	66	singed	
	66	enterprise	
5: On Night Street 6: The Box in the Closet	70	muddled	
	77	defiant	
	79	summon	
	87	incomprehensible	
7: A Message Full of Holes 8: Explorations	96	painstakingly	
	100	disorderly	
	104	beckoning	
	117	gnarled	
9: The Door in the Roped-Off Tunnel 10: Blue Sky and Goodbye	129	astonished	
	130	glumly	
	131	ambled	
	132	lurking	
11: Lizzie's Groceries 12: A Dreadful Discovery	145	misfortunes	
	151	gleamed	
	152	delectable	
	159	shrill	

NOTHING  
but  
CLASS

ONLY

PREVIEW

### Vocabulary Focus:

- Four challenge words chosen for every 1-2 chapters
- Complete Vocabulary List comes with and without definitions

ASSESSMENT PACKET

THE CITY OF EMBER

By Jeanne DuPrau



Name \_\_\_\_\_

TABLE OF CONTENTS:  
Assessment Packet

Resource	Pages
Vocabulary List with definitions	3-4
Vocabulary List with definitions (NO page numbers)	5-6
Vocabulary List without definitions	7-8
Vocabulary List without definitions (NO page numbers)	9-10
Assessment Packet Cover	11
Assessment #1 Chapters 1-4	12-14
Assessment #2 Chapters 5-8	15-17
Answer Key	18-23
Instructions for Digital Version/Google Drive File	24-25
Terms of Use, You May Like, and Artist Credit	26-28



Follow Me FOR MORE RESOURCES LIKE THIS!

Don't forget to leave a rating for TpT credits!

<https://www.teacherspayteachers.com/Store/Nothing-but-Class>

Easy Planning & Low Prep:

- Table of Contents
- Student Cover Page
- All answer keys

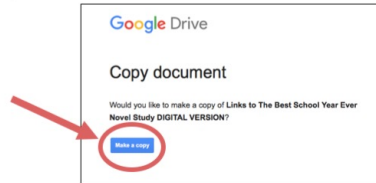
# Instructions

## for Digital Version/Google™ Drive File

1. You will need Internet access and a Google™ account (which is free).
2. Click on the link below. You will be prompted to make a copy of a Google™ document called "Digital Version: The City of Ember Assessments." Click on the blue button that says "Make a Copy." That copy will be saved to your Google™ Drive. (All of the screenshots below are examples only. The text may differ, but it will look otherwise the same.)

[Digital Version: The City of Ember Assessments](#)

Click here first!

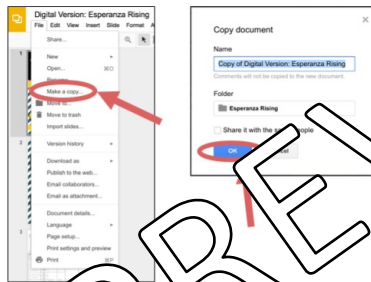


Note: If you have Google™ Drive accounts with multiple email addresses, make sure you take note which email address is selected in the top right corner of the screen, so you can easily find the document in the future.

3. If you completed Step 2 correctly, the document called "Digital Version: The City of Ember Assessments," just transferred to your Google account. It will contain the product in its entirety. This includes the table of contents, tests, answer keys, and everything else. You will notice that the resource has blue text boxes already placed everywhere that students will need to type.

MAKE ANOTHER COPY of this document "Digital Version: The City of Ember Assessments," by going to File>Make a copy. A window will pop up that says "Copy document." Rename it as you wish, and then click OK.

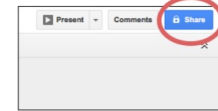
You will customize this additional copy in whatever ways you want, according to your students' needs.



NOTHING  
but  
Class

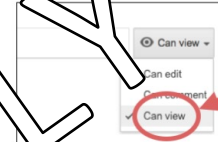
4. Think through how you want to roll it out to your students. Decide who you want your students to have access to. Obviously, you won't want to share answer keys. Do you want them to only have access to one test at a time? Do you want the vocabulary pages to be inaccessible when they're taking the quizzes? Once you decide, DELETE everything you don't want your students to have access to.
5. If you need to, make additional copies (as outlined in Step 3). For example, maybe you want to separate all of the vocabulary from the tests, or you want to separate the tests from each other. Make as many customized copies as you need to. Just be sure to name all of your customized copies according to what they are, so it is not confusing when it comes time to share the documents with your students.

6. Once you're ready, share the documents with your students as needed. Students will need their own Google™ accounts. To share, open the document you want to share in your Google™ Drive. Then, click on the blue button in the upper right corner that says "Share."

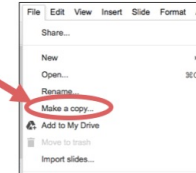


\*Note: Sharing with students could also be done through Google™ Classroom.\*

7. Next, you will be prompted to enter the students' email addresses. Be sure to mark your shared document as "Can View," which is a drop down menu on the right-hand side of where you type the e-mail addresses. "Can Edit" will likely be the default selection, so you will need to change it.



8. Students will need to make their own copies since they can't edit your documents. Their own copies will then get saved into their own Google™ files. In order to make their own copies, students will need to click the links in their e-mails, which will open the relevant document you shared with them in Google™ Drive. Students will need to click on "File," and then "Make a copy" in the upper left corner.



A box will pop up like the one below. Students can change the name of their copied documents to something of your choosing, so that it is not confusing when they share their document back with you. After they hit OK, the document will be saved into their own Google™ Drives.



9. Students will be able to access the e-mail links that you send them to their files will be saved into their own Google™ Drive.
10. Students may share their completed work with you.
11. Don't forget that you do have a printer-friendly version, printed on a separate page.

Your purchase includes both the PAPER version and the GOOGLE™ version of this novel study.

**BONUS Paperless Version included!**

- Compatible with Google™ Drive & Google™ Classroom
- Upon purchasing, you will receive instructions for how to get started right away!

# Why do it digital?

- ✓ No paper or pencil
- ✓ No wasting ink
- ✓ Students work directly in the file
- ✓ Incorporate technology
- ✓ Improve student writing
- ✓ High student engagement
- ✓ Renewed student interest
- ✓ Access anywhere
- ✓ College readiness
- ✓ Also printable
- ✓ Full color

PREVIEW ONLY

3

NOTHING  
class

**MORE about the GOOGLE™ version...**

- Resource pages are available in "Google™ Slides" with text boxes, for students to type into.
- Please note that the text within the resource itself is not editable. This version simply offers students the opportunity to access the resource via Google Drive™, so they may type and draw directly onto the pages on their computers or tablets.
- Though the text is not editable, you may delete or reorganize the pages as needed.
- See sample screenshots on the right for a clear idea of what this looks like.

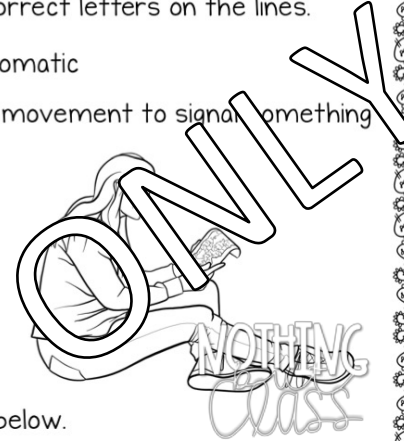
# THE CITY OF EMBER

## Assessment #1: Chapters 1-8

### ❖ Part 1: Vocabulary Matching

Match the words with their definitions by writing the correct letters on the lines.

- |                   |   |
|-------------------|---|
| 1. prosper ____   | A. sharp, biting, and aromatic                      |
| 2. pungent ____   | B. gesturing; making a movement to signal something |
| 3. summon ____    | C. flourish, thrive                                 |
| 4. beckoning ____ | D. maze or web                                      |
| 5. antics ____    | E. pranks and foolery                               |
| 6. labyrinth ____ | F. kindle or awaken                                 |



### ❖ Part 2: Vocabulary Fill-in-the-Blank

Choose the word that best completes each sentence below.

7. The old man looked \_\_\_\_\_ but he was actually our kindest neighbor.
- wry
  - disgraceful
  - gruff
  - sing
8. The ancient tree's branches were \_\_\_\_\_ and rough, but we loved looking at its uniqueness.
- mean
  - muddled
  - defiant
  - gnarled

### ❖ Part 3: Vocabulary Sentences

Write two sentences below, each containing one or more of the following words.

weary    belligerent    prosper    disgraceful    fuming    turbulent    enterprise

9. \_\_\_\_\_
10. \_\_\_\_\_

## ❖ Part 4: Comprehension Multiple Choice

Choose the best answer for each question below.

11. Which of the following does not occur in the story?
  - a. Lina gets a job working for the mayor.
  - b. Lina and Clary talk to Sadge, while Sadge is panicking.
  - c. Lina finds a mysterious paper that was in a locked safe.
  - d. Lina gets scolded by a guard at the mayor's office.
  
12. Choose the best word to describe Doon at the beginning of the story.
  - a. Worried
  - b. Insecure
  - c. Content
  - d. Timid
  
13. Choose the best words to describe Lina.
  - a. Loving and loyal.
  - b. Talkative and trusting.
  - c. Foolish and thoughtless.
  - d. Over-confident and stiff.
  
14. How does Doon react upon seeing the generator in the Pipeworks?
  - a. He is encouraged.
  - b. He is horrified.
  - c. He understands it immediately.
  - d. He is happy.
  
15. How does Mrs. Wu help Lina and her family?
  - a. She brings them dinner each night.
  - b. She gives them a lot of money.
  - c. She works at Granny's shop.
  - d. She keeps an eye on Granny when Lina isn't home.
  
16. What are some effects of the longest blackout to ever occur in Ember? Circle all that apply.
  - a. People start talking about moving underground.
  - b. People question the mayor at the town meeting.
  - c. The mayor calls a town meeting.
  - d. The streets become quieter.

## ❖ Part 5: Comprehension & Analysis Short Answer

Answer the following questions in complete sentences.

17. Describe one of the characters using at least three adjectives. Explain your choices.

---

---

---

---

18. Choose one of the following events from the story. Write about at least two effects that this event has on Lina.

- a. Lina's granny becomes more and more muddled.
- b. Assignment Day occurs.
- c. Poppy finds an old piece of paper from safe in the closet.

---

---

---

---



19. What part of this story so far made you feel a strong emotion? (The emotion can be happiness, sadness, anger, empathy, etc.) Explain what emotion it was, and why you felt that way.

---

---

---

---

20. Name one strength and one weakness that you believe Doon has. Explain your answers.

---

---

---

---