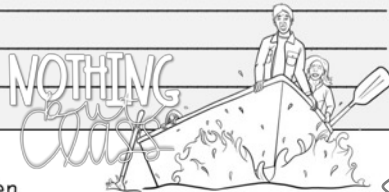


Chapters 17-18

* AWAY * WHERE THE RIVER GOES *

❖ **Quickwrite:** Have you ever done something risky, like ride a rollercoaster, go white water rafting, or ride a motorcycle? What was this experience like? How did it make you feel?



❖ **Vocabulary:** Fill in the blanks.

1. It was obvious that the old house had been _____ for a very long time; it was very filthy and broken down.
2. I was _____ when I realized that I had accidentally spilled the big secret.
3. After falling off my bike, I _____ home to nurse my wounds.
4. I _____ in horror and shrank away, when I saw the giant, hairy tarantula.

❖ **True or False:** Mark T for True and F for False.

1. Lina decides to bring both Poppy and Mr. Murphy with her down the river. _____
2. Riding on the river is a very calm and slow experience. _____
3. Doon leaves his father a note. _____
4. Lina realizes that she forgot to deliver the note to Clary. _____
5. Poppy discovers a very old book near the river. _____

❖ **Setting Analysis:** Describe the river. Write at least two quotes from the text that help you to picture the river.

❖ **Comprehension and Analysis:** Answer the questions in complete sentences.

1. Summarize what happens in these chapters.

2. Explain why Lina decides to bring Poppy with them on their journey down the river. Use textual evidence to support your answer.

3. What terrible mistake does Lina discover she made at the end of Chapter 18? What consequences do you think this mistake will have?

❖ **Beyond:** Re-read the description of Poppy's discovery. Write about it below. Include a guess of what it might be or mean. Illustrate it.

Features student work for every 1-2 chapters:

- Quickwrite-Writing prompt related to the text.
- Vocabulary-Focus on 4 challenge words.
- True/False, Sequencing, & Multiple Choice questions.
- Standards Focus Question.
- Three Short Answer Questions.
- Beyond-Creative activities.

STUDENT CHAPTER PACKET

THE CITY OF EMBER

By Jeanne DuPrau



Name _____

VOCABULARY PACKET

THE CITY OF EMBER

By Jeanne DuPrau



Name _____

TABLE OF CONTENTS: Student Chapter Packet

Reference	Pages
About the Student Chapter Packet	14
Student Chapter Packet Cover	15
Prologue: The Instructions	16-17
Chapter 1: Assignment Day	18-19
Chapter 2: A Message to the Mayor	20-21
Chapter 3: Under Ember	22-23
Chapter 4: Something Lost, Nothing Found	24-25
Chapter 5: On Night Street	26-27
Chapter 6: The Box in the Closet	28-29
Chapter 7: A Message Full of Holes	30-31
Chapter 8: Explorations	32-33
Chapter 9: The Door in the Rope-off Tunnel	34-35
Chapter 10: Blue Sky and Goodbye	36-37
Chapter 11: Lizzie's Groceries	38-39
Chapter 12: A Dreadful Discovery	40-41
Chapter 13: Deciphering the Message	42-43
Chapter 14: The Way Out	44-45
Chapter 15: A Desperate Run	46-47
Chapter 16: The Singing	48-49
Chapter 17: Away	50-51
Chapter 18: Where the River Goes	52-53
Chapter 19: A World of Light	54-55
Chapter 20: The Last Message	56-57
Student Chapter Packet Answer Key	58-60

Follow Me FOR MORE RESOURCES LIKE THIS!
Don't forget to leave a rating for TpT credits!
<https://www.teacherspayteachers.com/Store/Nothing-but-Class>

TABLE OF CONTENTS: Vocabulary Packet

Reference	Pages
Vocabulary Packet Cover	53
Vocabulary Review #1: Prologue + Chapters 1-8	54-56
Vocabulary Review #2: Chapters 9-20	57-59
Vocabulary Review Answer Key	60-65
Vocabulary Word Wall Cards	66-71
Vocabulary Flashcards	72-83



Follow Me FOR MORE RESOURCES LIKE THIS!
Don't forget to leave a rating for TpT credits!
<https://www.teacherspayteachers.com/Store/Nothing-but-Class>

STUDENT CHAPTER PACKET ANSWER KEY

Prologue and Chapter 1
◆ THE INSTRUCTIONS ◆ ASSIGNMENT DAY ◆

(page 1)
Background: Answers will vary.
Vocabulary:
1. disgraceful
2. idyllic
3. weary
4. prosper
True or False:
1. F
2. T
3. F
4. F
5. T
Character Analysis: Lina is 12 years old and has just graduated from school into a job. She is optimistic. She has long, dark hair. She loves her grandma and her little sister. Her best friend is named Lizzie. She is excited to trade jobs with Doon to be a messenger because she loves running.

(page 2)
Comprehension and Analysis:
1. The City of Ember is always dark. Everything there is very old and worn, and supplies are getting shorter and shorter. In Ember, students start working their assigned jobs at age twelve. It is different from my city because we have the sun and the moon to give us light. We don't have power shortages often, and we also usually go to school through at least high school. (Answers to the second question may vary.)
2. Students in the City of Ember go through something on the last day of their final year called Assignment Day. On that day, they randomly choose jobs, like greenhouse helper, timekeeper's assistant, or messenger. I disagree with this method, because this does not seem to take into account anybody's gifts or talents, because it is so random. (Answers to the second question may vary.)
3. Doon asks Lina to trade jobs with him, so that she would be messenger and she would be a pipeworker. Lina reacts very happily because she wants to be messenger. On page 16, "...whether it was important or not, the job of messenger just happened to be perfect for her. She loved to run. She could run forever."

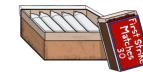
Beyond: Answers will vary.

PREVIEW

ABOUT THE STUDENT CHAPTER PACKET

The student work for every chapter of reading contains both comprehension and vocabulary. Each part includes the following sections:

- Quickwrite:** A great idea is to have the students free-write here BEFORE reading the chapter. This gets their minds warmed up and thinking in the direction that the chapters will take them. This also helps them to connect the concepts in the story to themselves.
- Vocabulary:** The students practice with four new words that are chosen for you from every chapter. Synonyms, antonyms, and context clues are among the skills included.
- True/False, Multiple Choice, or Sequencing:** One set of these types of questions are included for each section.
- Standards Focus:** One question or activity is included. These focus on Reading Literature standards like main idea, character analysis, and figurative language.
- Comprehension and Analysis:** Three short answer questions are provided per section. You will find that these questions are at all levels of Bloom's Taxonomy, so are optimal for differentiation if needed. Use them all or choose just some for your students to complete.
- Beyond:** The Beyond activities are a mix of fun activities, including art, graphic organizers, and text-to-self connections. They require the students to use their imaginations, and some upper-level thinking. You might even choose to use these as an option for early finishers.



Easy Planning & Low Prep:

- Tables of Contents
- Teacher instructions
- Student Cover Pages
- Student reference bookmarks
- All answer keys

NOTHING BUT CLASS



TABLE OF CONTENTS

Resource	Pages
Student Reference Bookmarks (two-sided)	3-4
Vocabulary List with definitions	5-6
Vocabulary List with definitions (NO page numbers)	7-8
Vocabulary List without definitions	9-10
Vocabulary List without definitions (NO page numbers)	11-12
<i>Table of Contents: Student Chapter Packet</i>	
Student Chapter Packet with answer key	14-33
<i>Table of Contents: Vocabulary Packet</i>	
Vocabulary Packet with answer key	35-83
Instructions for Digital Version/Google Drive File	84-86
Terms of Use, You May Like, & Artist Credit	87-89

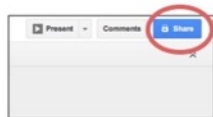


Follow Me FOR MORE RESOURCES LIKE THIS!

Don't forget to leave a rating for TpT credits!

<https://www.teacherspayteachers.com/Store/Nothing-but-Class>

6. Once you're ready, share the documents with your students as needed. Students will need their own Google™ accounts. To share, open the document you want to share in your Google™ Drive. Then, click on the blue button in the upper right corner that says "Share."

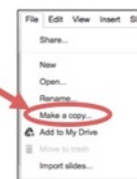


Note: Sharing with students could also be done through Google™ Classroom.

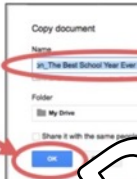
7. Next, you will be prompted to enter the students' e-mail addresses. Be sure to mark your shared document as "Can View," which is a drop down menu on the right-hand side of where you type the e-mail addresses. "Can Edit" will likely be the default selection, so you will need to change it.



8. Students will need to make their own copies since they can't into their own Google™ Drives. In order to make their own copies, click on the blue button that says "Make a Copy," which will open whatever document you shared with them in a new window. "Make a copy," in the upper left corner.



A box will pop up like the one below. Students can change the name of the copy, so that it is not confusing when they share their documents. The copy will be saved into their own Google™ Drives.



9. Students will be able to access the content of the documents they share. The content of the documents they share with students make to their files will be automatically updated.
 10. Students may share their works in progress with their parents or other students.
 11. Don't forget that you do have the option to print whatever you want. Printing is definitely most handy if they are printed. However, for the digital version (in this PDF).

12. Other Notes and Suggestions:

- The following resources are MOST handy when printed out. As mentioned previously, you have the option to print from Google Drive in full color, or from this PDF in mostly b/w.
 - ✓ Student Bookmarks (pages 4-5)
 - ✓ Vocabulary Word Wall Cards (pages 58-62)
 - ✓ Vocabulary Flash Cards (pages 63-71)
 - ✓ Questions and Answers: Writing Sheet and Gluing Sheet (pages 74-75)
- Try having the students complete the writing portion of the Character Cards (pages 82-85) on Google Drive. Then, you can print the cards when all of the writing is complete.

Instructions for Digital Version/Google™ Drive File

- You will need Internet access and a Google™ account (which is free).
- Click on the link below. You will be prompted to make a copy of a Google™ document called "Digital Version: Ramona Quimby, Age 8." Click on the blue button that says "Make a Copy." That copy will be saved to your Google™ Drive. (All of the screenshots below are examples only. The text may differ, but it will look like the one.)

[Digital Version: Ramona Quimby, Age 8](#)

Click here first!

Note: If you have Google™ Drive accounts with multiple email addresses, make sure you take note which email address is selected in the top right corner of the screen, so you can easily find the document in the future.

- If you completed Step 2, you will have a document called "Digital Version: Ramona Quimby, Age 8," just transferred to your Google account. It will contain the novel study in its entirety. This includes the unit map, tables of contents, student pages, answer keys, and everything else. You will notice that the novel study has blue text boxes already placed everywhere that students will need to type.

Now, to make a copy of this document "Digital Version: Ramona Quimby, Age 8," by going to File>Make a copy. A window will pop up that will allow you to name the document. Rename it as you wish, and then click OK.

NOTHING but Class

PREVIEW ONLY

Your purchase includes both the PAPER version and the GOOGLE™ version of this novel study.

BONUS Paperless Version included!

- Compatible with Google™ Drive & Google™ Classroom
- Within this product are easy instructions for how to get started right away!

Why do it digital?

- ✓ No paper or pencil
- ✓ No wasting ink
- ✓ Students work directly in the file
- ✓ Incorporate technology
- ✓ Improve student writing
- ✓ High student engagement
- ✓ Renewed student interest
- ✓ Access anywhere
- ✓ College readiness
- ✓ Also printable
- ✓ Full color

PREVIEW ONLY

20

21

22

24

6

Comprehension and Analysis: Answer the questions in complete sentences.

1. Summarize Doon's first day of work. How is it different from Lina's first day of work?
[Text Here](#)
2. Describe and explain Doon's reaction to the generator. Support your answer with textual evidence.
[Text Here](#)
3. What do you learn about Doon's family in this chapter?
[Text Here](#)

Beyond: Doon is very fascinated by bugs, and even writes down his observations of them. Below, draw and write about something that fascinates you

[Text Here](#)

MORE about the GOOGLE™ version...

- All pages are available in "Google™ Slides" with text boxes, for students to type into.
- Please note that the text within the resource itself is not editable. This version simply offers students the opportunity to access the pages via Google Drive™, so they may type and draw directly onto the pages on their computers or tablets.
- Though the text is not editable, you may delete or reorganize the pages as needed.
- See sample screenshots on the right for a clear idea of what this looks like.

NOTHING
but
class

Prologue & Chapter 1

* THE INSTRUCTIONS * ASSIGNMENT DAY *

❖ **Quickwrite:** If you could have any job in the world when you grow up, what job would it be? Explain why.

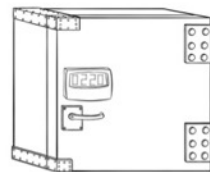
NOTHING
but
CLASS

PREVIEW ONLY

❖ **Vocabulary:** Fill in the blanks.

1. In a very disappointed voice, _____ the teacher told _____ that the way we had behaved for _____ the substitute teacher was _____.
2. The old house was full of dark, narrow passageways and doors that led to nowhere, and we were very much like a _____ in _____ people unfamiliar with it.
3. It had been a long day of travel for our family, and we were _____ as we finally climbed into bed.
4. My parents later told me that I would not _____ in life unless I worked harder in school.

weary
labyrinth
prosper
disgraceful



❖ **True or False:** Mark T for True and F for False.

1. Lina is sixteen years old. _____
2. The secret box with a timed lock becomes lost and forgotten. _____
3. In the City of Ember, the sky is always bright. _____
4. Doon wishes to be a Supply Depot clerk. _____
5. Doon and Lina trade their jobs. _____

❖ **Character Analysis:** What do you know about Lina so far?

❖ **Comprehension and Analysis:** Answer the questions in complete sentences.

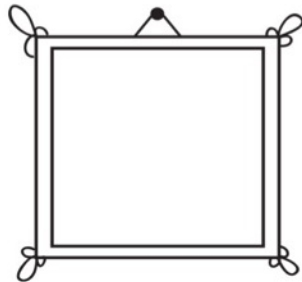
1. What do you know so far about the City of Ember? How is it different from your city?

NOTHING
but
CLASS

2. How do students in the City of Ember get their jobs? Do you like or dislike this method? Explain.

3. What does Doon ask Lina at the end of Chapter 1? How does Lina react? Use textual evidence to support your answer.

beyond What do you think the secret locked box contains? Illustrate and write about your guess below.



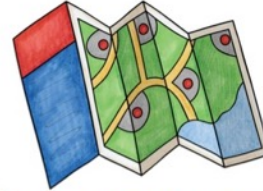


weary

(adjective)
worn out and exhausted

labyrinth

(noun) maze or web



prosper

(verb) flourish, thrive



disgraceful

(adjective)
shameful and dishonorable



fuming

(adjective or verb)
seething furious



reverberating

(verb or adjective)
echoing and vibrating



serene

(adjective) peaceful



antics

(noun)
pranks and foolery



PREVIEW ONLY

NOTHING BUT CLASS

Word:

pungent

Definition:

sharp, biting,
and aromatic

Word:

gruff

Definition:

grouchy and abrupt

Word:

scorched

Definition:

scorched

Word:

enterprise

Definition:

endeavor or plan

PREVIEW ONLY