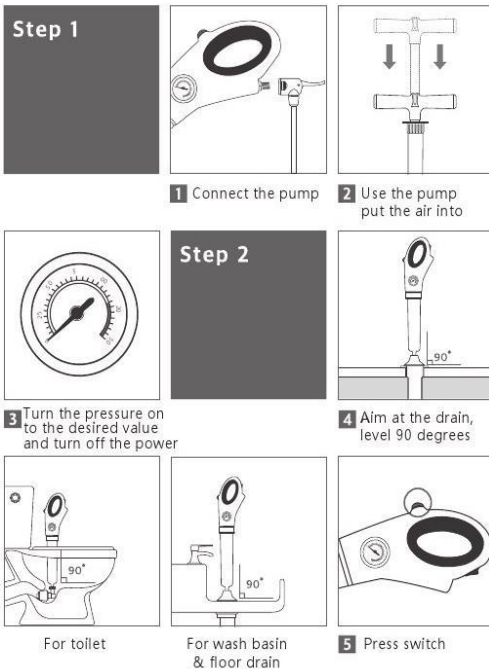


BEST PLUNGER INSTRUCTIONS

Simple instructions for use



STEP 1 – ATTACH TO THE PUMP WITH STANDARD BICYCLE PUMP OR AIR COMPRESSOR.

STEP 2 – PUMP UNTIL THE DESIRED PSI HAS BEEN REACHED.

STEP 3 - FOR THE TOILET PRESSURE SHOULD NOT EXCEED 60 PSI
FOR THE SINK DRAIN PRESSURE SHOULD NOT EXCEED 30 PSI
FOR THE SHOWER DRAIN PRESSURE SHOULD NOT EXCEED 30 PSI

STEP 4 - AIM AT THE DRAIN WITH A 90 DEGREE ANGLE

STEP 5 - PRESS THE RED SWITCH TO RELEASE AIR PRESSURE INTO THE DRAIN.
(PLEASE NOTE, NEVER PUT HARD OBJECTS INTO THE END OF THIS UNIT TO SHOOT AT OTHERS)

NOTES:

FOR TOILET – MAKE SURE THE INFLATABLE TOILET HEAD IS PUT FULLY INTO THE TOILET DRAIN AND HOLD STEADY BEFORE PUSHING THE RED BUTTON.

FOR SINK– MAKE SURE THE DRAIN HEAD PROPERLY COVERS THE DRAIN AND HOLD STEADY BEFORE PUSHING THE RED BUTTON.

FOR SHOWER – MAKE SURE THE DRAIN HEAD PROPERLY COVERS THE DRAIN AND HOLD STEADY BEFORE PUSHING THE RED BUTTON.



Sink Drain Head



Shower Drain Head



Inflatable Toilet Head

WARNINGS:

THIS PLUNGER IS NOT A TOY! DO NOT ALLOW CHILDREN TO PLAY WITH OR BE NEAR THIS PRODUCT WHEN IS USE. THIS PRODUCT IS FOR ADULT USE ONLY.

DO NOT USE WHEN USING DRAIN CLEANER OR CLEANER IS IN SINK OR BASIN.

DO NOT USE NEAR ELECTRICAL CONNECTORS.

DO NOT PUT MIGHTY PLUNGER AIR EXIT NOZZLE BY ANY PART OF YOUR BODY.

DO NOT PUT HARD OBJECTS INTO THE END OF THIS UNIT.

DO NOT USE THIS UNIT FOR MORE THAN MORE THAN 5 TIMES WITHIN 30 MINUTES.