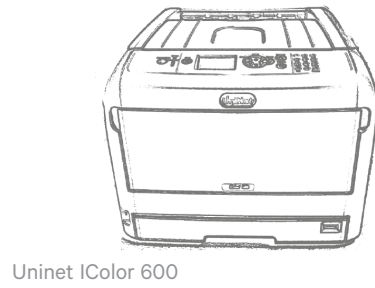


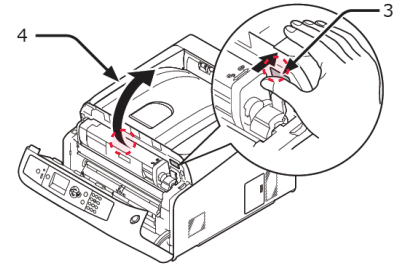
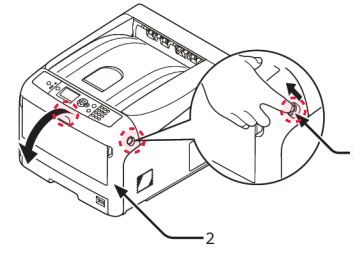
For detailed instructions, please refer to the Uninet iColor 600 Printer User Manual and the Uninet iColor ProRIP User Manual

1. Remove the packing materials and check the components

Uninet iColor ProRIP dongle

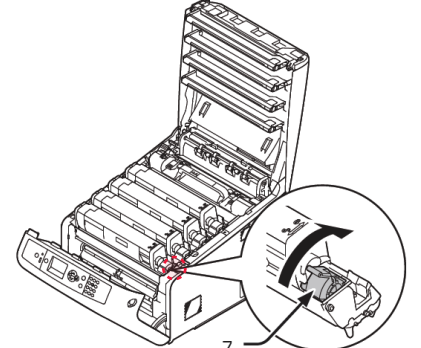
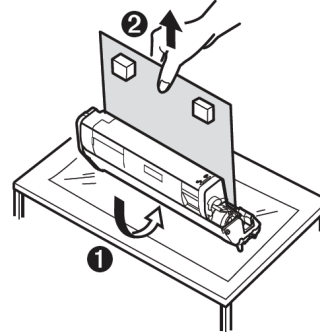
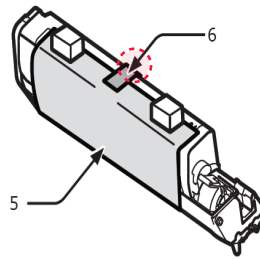
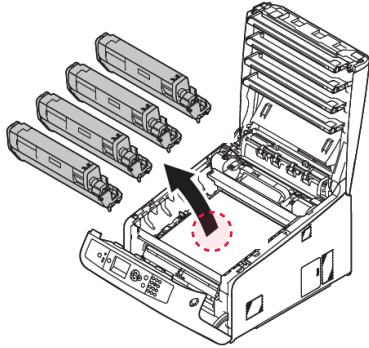


2. Open the front door and top lid of the printer



3. Uninstall the cartridges to remove the protective orange film from each.

- Lock the blue lever forward.
- Reinstall the cartridges.



* Please note the blue handle on the white cartridge is already in the locked position *

4. Using the provided USB drive, install the driver.

- Only connect the Printer to the PC when prompted to by the software.
- Connect the power cord and USB cable to the printer. Power on the printer.

5. The Uninet iColor 600 Digital Color + White Transfer Media Printer has THREE configurations to suit any printing project

These coincide with the 'Print Queues' in the iColor ProRIP (Step 14)

A. Standard CMYK



Slot Order (Front to Back)

B. Spot Color Underprinting. (Typically used for right side reading applications.)



Slot Order (Front to Back)

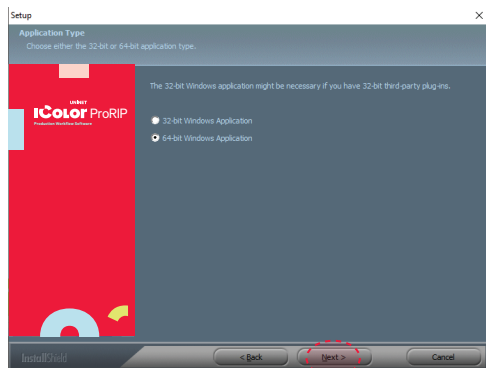
C. Spot Color Overprinting (Typically used for reverse printing applications.)



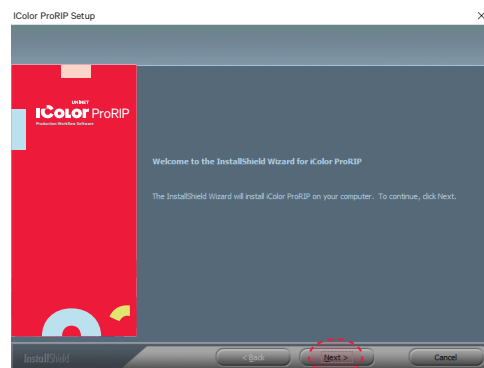
Slot Order (Front to Back)

6. Install the Uninet iColor ProRIP (stored on the provided dongle)

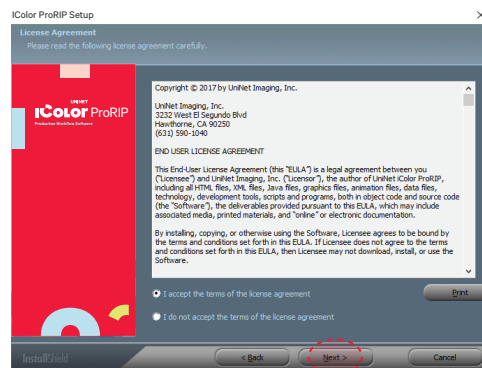
- Choose your language and follow the install steps



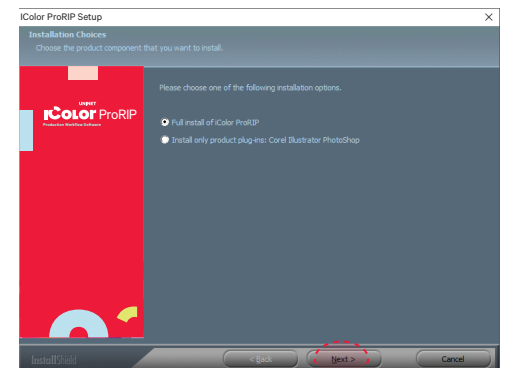
Setup
Application Type. Choose either 32-bit or 64-bit application type. To Continue, select Next.



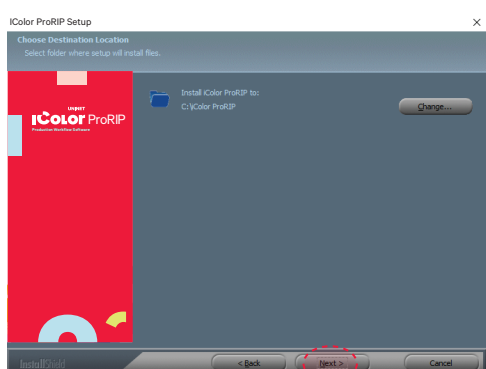
iColor ProRIP Setup
InstallShield Wizard for iColor ProRIP
The InstallShield Wizard will install iColor ProRIP on your computer. To Continue, select Next.



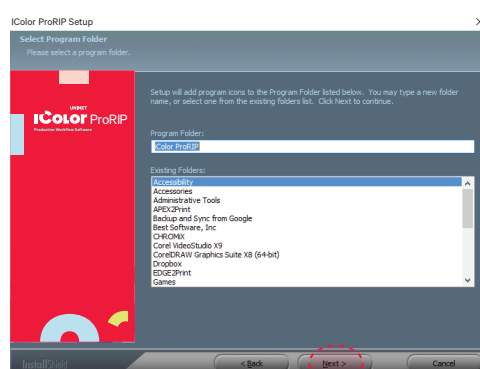
iColor ProRIP Setup
License Agreement
Please read the following license agreement carefully. If you agree, Accept and select Next.



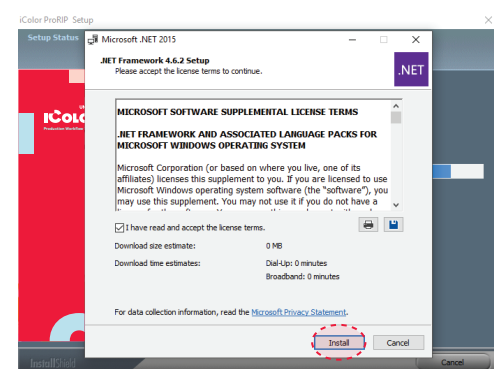
iColor ProRIP Setup
Installation Choices
Choose 'Full install of iColor ProRIP' and select Next.



iColor ProRIP Setup
Choose Destination Location. Select folder where setup will install files. To Continue, select Next.



iColor ProRIP Setup
Select Program Folder. Please select a program folder. Setup will add program icons to the Program Folder listed below. You may type a new folder name, or select one from the existing folders list. Select Next to continue.

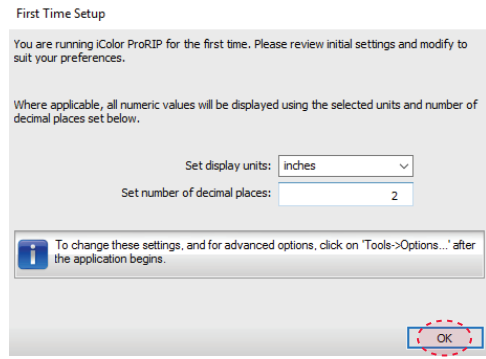


iColor ProRIP Setup
Agree to license terms and select Install.

7. Uninet IColor ProRIP software

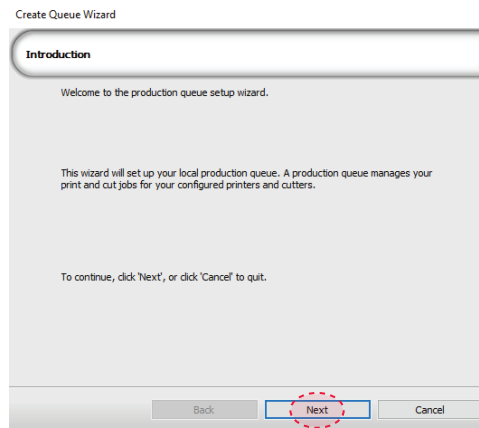
First time Setup

- Ensure the ProRIP dongle is inserted and you are connected to the internet (required)
- Launch the software
- Set unit of measure and decimal places, then select OK.

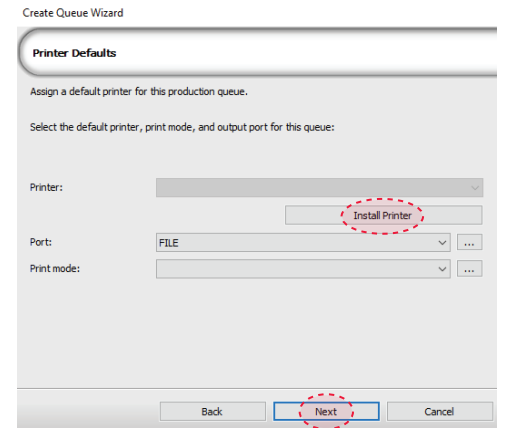


8. ProRIP opens, the Queue Wizard will begin the installation of the support files for your IColor 600 printer

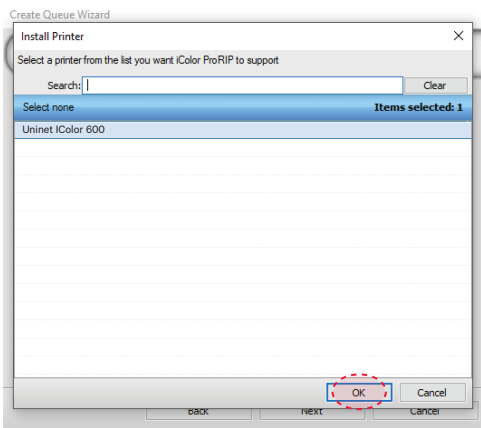
- Select Next



- Select Install Printer

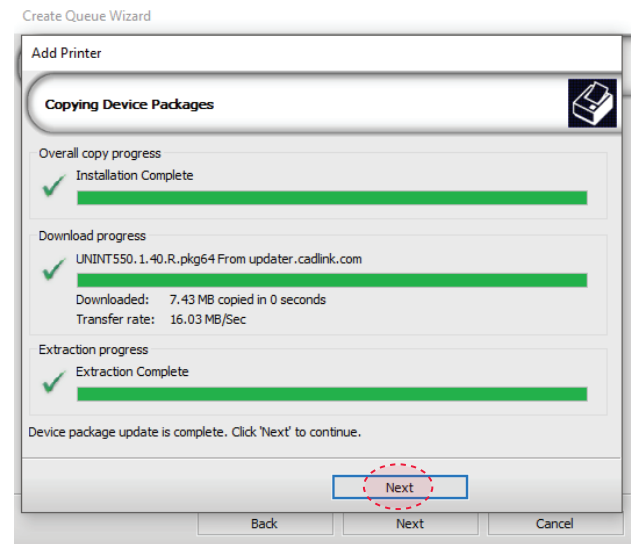
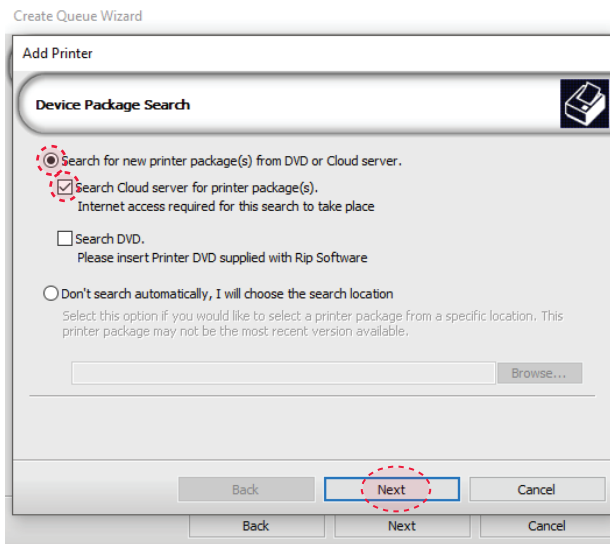


9. Select the IColor 600 printer from the support menu and select 'OK'



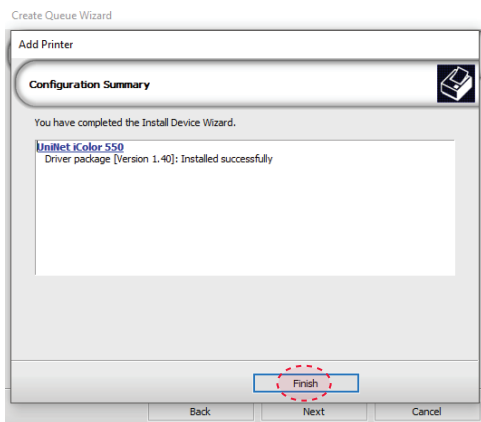
10. Device package Search

- Select 'Search' for new printer package
- Select 'Next' to continue the installation



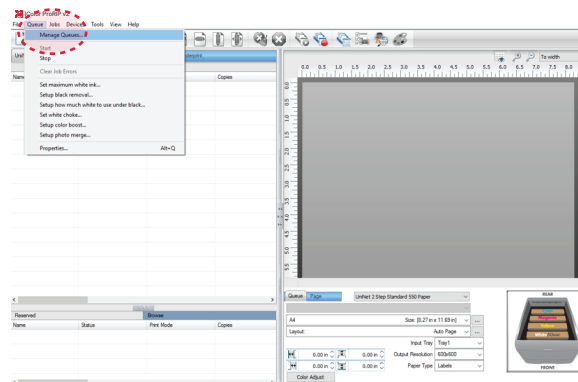
11. Select 'Finish' to complete the installation

- Please continue for software configuration

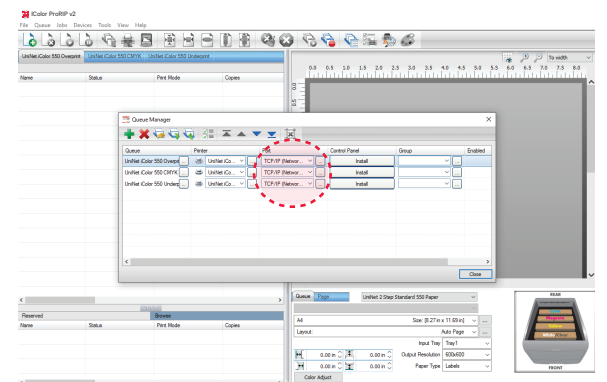


12. Uninet IColor ProRIP Printer Queue Setup

- Open the IColor ProRIP
- Select Queue/Manage Queues
- Select the proper port from the 'Port' drop down menu.
 - If connected via network (recommended), choose TCP/IP.



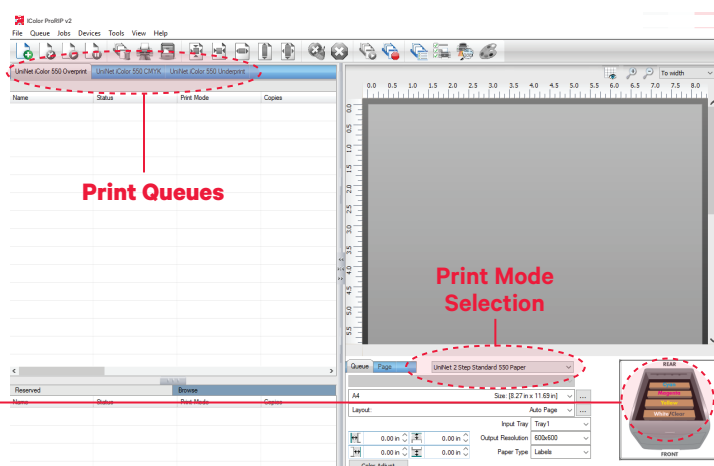
- If connected by USB, choose the printer as identified in the drop down
- * All other ports will update automatically, it is only necessary to do this for one queue
- Select 'Close'



13. Select the proper Print Queue for your project

- A. Select your 'Print Que' and 'Print Mode'
 - The 'Print Modes' have preset values for white coverage, choke, paper size, paper tray and mirror settings
- These can be modified as needed

Note: Preview icon should match the physical cartridge configuration of the printer.



14. Import + Print Graphic

- A. Three ways to import graphics
 - 1. Select the 'green plus' icon and navigating to the proper folder.
 - 2. Select File > Import File
 - 3. Simply dragging and dropping your file into the queue
- B. Select the desired file
- C. Select 'Print' icon in the menu bar.

