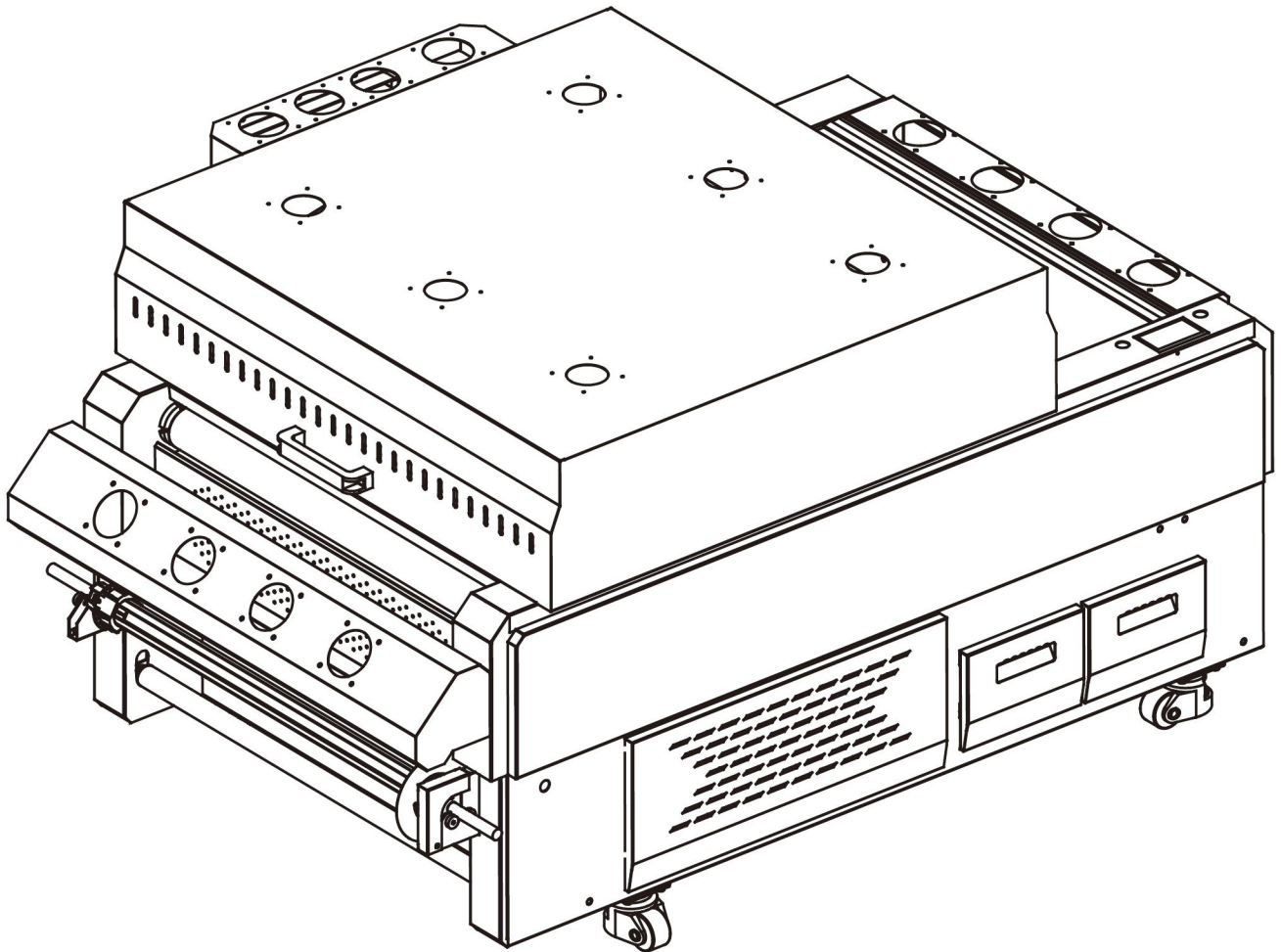


Operation Manual

For Powder Shaker V16



Garment Printer Ink

375 Oser Ave

Hauppauge, NY 11788

(631) 858-0114

Content

Introduction	III
Caution	III
Requests	III
FCC statement (USA)	III
TV and radio interference	III
Product Appearance	III
Safety Precautions	IV
Symbols	IV-VI
Working Environment	VII
Place of installation	VII
Temperature of working environment	VII
Chapter 1 - Before use	
Part Names and Functions	1-1
Fronts	1-2
Rear side	1-3
Operating panel	1-4,5
Front sensor	1-6
Powder box	1-6
Powder shaking blade	1-6
Lamp	1-6
Tension sensor	1-6
Powder configuration requirements	1-7
Chapter 2 - Basic Operations	
Workflow	2-2
Turning the Power On/OFF	2-3
Turning the power on	2-3
Turning the power off	2-3
Loading Media	2-4
Adjusting Sensor height	2-4
Loading roll media	2-4
Pouring power	2-5
Pouring power	2-5
Auto mode	2-5
Switch to auto mode	2-5
Conditions of AM	2-6
Stick the media	2-6
Link mode	2-7

Chapter 3 - Maintenance Guidelines

Routine Maintenance	3-1
Before use.....	3-2
After use	3-2
Oven cleaning	3-2
filter box	3-2
Regularly replace the filter.....	3-3
How to replace filter box	3-3
Replacement cycle	3-3
Kind tips	3-3

Introduction

Thank you for purchasing the 60cm (V16) powder shaker.

The 60cm (V16) powder shaker(hereafter, "the machine")stands out for its superior performance with low power consumption, environmental friendliness, and user-friendly operation that feed with 800mm max size ,enhancing the adhesion of ink onto various surfaces during the printing process, making it an ideal choice in printing technology.

Unauthorized reproduction of any portion of this document is strictly prohibited.

© AIIFAR Electronics Co.,Ltd.

All Rights Reserved. Copyright

Caution

AIIFAR Electronic Co., Ltd. is in no way liable for any damages whatsoever (including but not limited to lost profit, indirect damage, special damage, or other monetary damage) arising from using or inability to use the machine, except as provided in AIIFAR warranty provisions.

This applies even if AIIFAR has been informed of the possibility of such damages.

For example, we cannot be held liable for any loss of media or other materials from using the machine, nor are we liable for any indirect loss caused by printed materials.

Please note that we are not liable for any financial damage or lost profits resulting from the use of the machine, or for any claims from third parties.

Requests

- This manual describes the operations and maintenance of the machine.
- Illustrations in the manual may be different from the appearance of some models.
- Read this manual carefully and make sure you understand it before use.
- Although every effort has been made to ensure the accuracy of the information in this manual, if you find any issues, contact your dealer, our service office, or our call center.
- This manual is subject to change without notice for improvement.
- You can also download the latest manual from our website.

FCC statement (USA)

The machine has been tested and found to comply with the limits for a Class A digital device, pursuant to Part 15 of the FCC Rules. These limits are designed to provide reasonable protection against harmful interference when the machine is operated in a commercial environment.

The machine generates, uses, and can radiate radio frequency energy and, if not installed and used in accordance with the operation manual, may cause harmful interference to radio communications.

TV and radio interference

In use, the machine emits high-frequency electromagnetic radiation. If installed or used incorrectly, this may result in TV or radio interference. Accordingly, there is no assurance that the machine will not affect special radio or TV equipment.

If you believe the machine is interfering with radio/TV reception, turn it off to confirm. If interference is alleviated when the machine is off, the machine is likely to be causing the interference.

Try any of the following solutions or combinations of solutions:

- Change the orientation of the TV or radio antenna to find a position where interference does not occur.
- Place TVs or radios away from the machine.
- Plug TVs or radios into outlets on a different power supply path than the machine.

Product Appearance

Please note that the descriptions of the product appearance in the operating manual are primarily based on the product you actually receive.

While ensuring the main functionality of the product remains unaffected, we continuously make subtle adjustments to the product appearance to achieve optimal design. These adjustments aim to enhance the overall look and feel of the product, providing you with an improved user experience.

In the case of significant changes, we will promptly notify you through the appropriate channels, ensuring that you stay informed about the latest product information.



Introduction

Thank you for purchasing the 60cm (V16) powder shaker.

The 60cm (V16) powder shaker(hereafter, "the machine")stands out for its superior performance with low power consumption, environmental friendliness, and user-friendly operation that feed with 800mm max size ,enhancing the adhesion of ink onto various surfaces during the printing process, making it an ideal choice in printing technology.

Unauthorized reproduction of any portion of this document is strictly prohibited.

© AIIFAR Electronics Co.,Ltd.

All Rights Reserved. Copyright

Caution

AIIFAR Electronic Co., Ltd. is in no way liable for any damages whatsoever (including but not limited to lost profit, indirect damage, special damage, or other monetary damage) arising from using or inability to use the machine, except as provided in AIIFAR warranty provisions.

This applies even if AIIFAR has been informed of the possibility of such damages.

For example, we cannot be held liable for any loss of media or other materials from using the machine, nor are we liable for any indirect loss caused by printed materials.

Please note that we are not liable for any financial damage or lost profits resulting from the use of the machine, or for any claims from third parties.

Requests

- This manual describes the operations and maintenance of the machine.
- Illustrations in the manual may be different from the appearance of some models.
- Read this manual carefully and make sure you understand it before use.
- Although every effort has been made to ensure the accuracy of the information in this manual, if you find any issues, contact your dealer, our service office, or our call center.
- This manual is subject to change without notice for improvement.
- You can also download the latest manual from our website.

FCC statement (USA)

The machine has been tested and found to comply with the limits for a Class A digital device, pursuant to Part 15 of the FCC Rules. These limits are designed to provide reasonable protection against harmful interference when the machine is operated in a commercial environment.

The machine generates, uses, and can radiate radio frequency energy and, if not installed and used in accordance with the operation manual, may cause harmful interference to radio communications.

TV and radio interference

In use, the machine emits high-frequency electromagnetic radiation. If installed or used incorrectly, this may result in TV or radio interference. Accordingly, there is no assurance that the machine will not affect special radio or TV equipment.

If you believe the machine is interfering with radio/TV reception, turn it off to confirm. If interference is alleviated when the machine is off, the machine is likely to be causing the interference.

Try any of the following solutions or combinations of solutions:

- Change the orientation of the TV or radio antenna to find a position where interference does not occur.
- Place TVs or radios away from the machine.
- Plug TVs or radios into outlets on a different power supply path than the machine.

Product Appearance

Please note that the descriptions of the product appearance in the operating manual are primarily based on the product you actually receive.

While ensuring the main functionality of the product remains unaffected, we continuously make subtle adjustments to the product appearance to achieve optimal design. These adjustments aim to enhance the overall look and feel of the product, providing you with an improved user experience.

In the case of significant changes, we will promptly notify you through the appropriate channels, ensuring that you stay informed about the latest product information.



Precautions in use

CAUTION

Handling of the power cable



- Plug into a polarized electrical outlet.
- Always plug the power cable into an outlet near the machine, and make sure the power cable can be easily unplugged.
- Regularly (at least once a year) unplug the cable and remove any dust on or near the power plug. Failure to remove dust may result in fire.
- Do not use a voltage other than the indicated voltage.
- Before plugging in the machine, check the outlet supply voltage and circuit breaker capacity. Plug each cable into a power source with an independent breaker. If you plug more than one power cable into outlets that share the same circuit breaker, it may trip the breaker.

Power supply



- Leave the breaker in the ON position.
- Do not turn off the main power switch on the side of the machine.

Notes on maintenance



- Pay close attention to ventilation and be sure to wear safety glasses, gloves, and a mask. When dealing with unused hot melt powder, airborne particles may enter the eyes or mouth. Please take precautions.



- Gloves are consumables. After you have worn out the included gloves, purchase and use commercially available gloves.



Moving part precaution



- Keep fingers and other body parts away from hazardous moving parts.
- Do not touch the dusting roller when it is rolling. Failure to observe these instructions may result in finger injury such as torn skin or fingernails.
- Keep your head and hands away from moving parts during operation. Failure to observe these instructions may result in injury such as your hair becoming caught in the machine.
- Wear suitable clothes. (Do not wear loose-fitting clothes or accessories.) Keep long hair bound.

CAUTION

Pres-Heater



- Do not pour liquid on the media transport surface. Failure to observe these instructions may result in heater failure or sparks.
- Do not touch the media transport surface with bare hands while the heater is hot. Failure to observe these instructions may result in burns.

Precautions and notes

WARNING

Consumable Items



- Machine consumables, including hot melt powder and transfer film.
- The machine's safety level is based on the use of AIIFAR recommended transfer film. To ensure operational safety, please use the transfer film recommended by AIIFAR.
- If hot melt powder is brought from a cold place to a warm place, please let it sit at room temperature for at least three hours before use.
- Do not leave consumables exposed to the air for an extended period; if left open for a long time, they may not transfer properly. If not in use, seal and store them.
- Store consumables in a cool, dark place.
- Keep consumables out of reach of children.
- Once consumable packaging is opened, please use it within half a month. After a certain period of time, the transfer quality may decline.
- Please hand over unused consumables to your dealer or service representative. If handling them yourself, comply with the requirements of industrial waste disposal facilities and local regulations.

Components requiring periodic replacement



- Some parts of the machine require regular replacement. For long-term use of the machine, be sure to apply for an annual maintenance contract.

Machine disposal



- Contact your dealer or service representative for assistance when disposing of the machine. If you will dispose it by yourself, request assistance from an industrial waste disposer.

! WARNING

Notes on maintenance

- Machine consumables, including hot melt powder and transfer film.
- The machine's safety level is based on the use of AIIFAR recommended transfer film. To ensure operational safety, please use the transfer film recommended by AIIFAR.
- If hot melt powder is brought from a cold place to a warm place, please let it sit at room temperature for at least three hours before use.
- Do not leave consumables exposed to the air for an extended period; if left open for a long time, they may not transfer properly. If not in use, seal and store them.
- Store consumables in a cool, dark place.
- Keep consumables out of reach of children.
- Once consumable packaging is opened, please use it within half a month. After a certain period of time, the transfer quality may decline.
- Please hand over unused consumables to your dealer or service representative. If handling them yourself, comply with the requirements of industrial waste disposal facilities and local regulations.

Components requiring periodic replacement

- Some parts of the machine require regular replacement. For long-term use of the machine, be sure to apply for an annual maintenance contract.

Machine disposal

- Contact your dealer or service representative for assistance when disposing of the machine. If you will dispose it by yourself, request assistance from an industrial waste disposer.

Notes on maintenance

- Use in a room with as little dust as possible.
- Use in a room with as much ventilation as possible.
- Regularly wipe the oil tank to keep it clean and prevent oil accumulation.
- Store transfer film in a bag. Wiping off dust accumulated on the media will adversely affect the media due to static electricity.
- When leaving the workshop after working hours, do not leave any media on the roll hanger. Dust will adhere to the media.

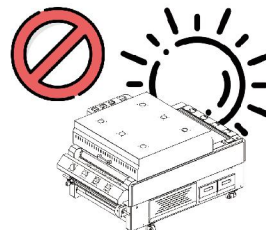
! WARNING

Handling of media

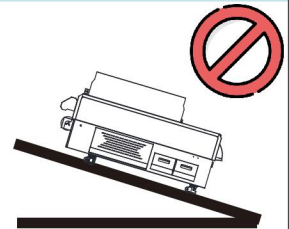
- Use recommended media. Please use the media recommended by AIIFAR to ensure reliable, high-quality transfers.
- Be aware of media expansion and contraction. Do not use media that has just been opened. The media may expand or contract depending on the room temperature and humidity. Open the package and allow it to adjust to the place of use for at least 30 minutes before loading it in the machine.
- Do not use curled media. Not only does this cause media jamming, but it also affects transfer quality. Straighten any media that is significantly curled before use. When rolling up regular-sized coated media for storage, make sure the coated side is facing outward.
- Set the heater temperature to suit media characteristics.
- Do not leave media loaded over extended periods with the heater on.
- With some types of media, under high temperature and humidity, it may affect the transfer effect. Be careful about where media is stored.
- With some types of media, if the media is left exposed to air, the ink-receiving layer may change, causing image defects such as blurred colors and bleeding.

Installation precautions

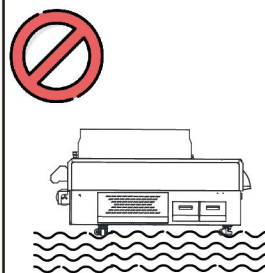
Places exposed to direct sunlight



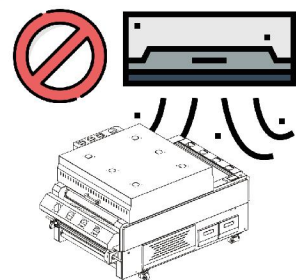
Places with uneven surfaces



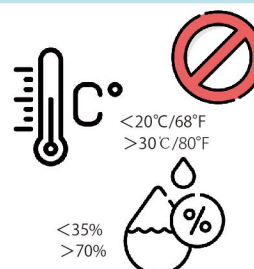
Places where vibration is generated



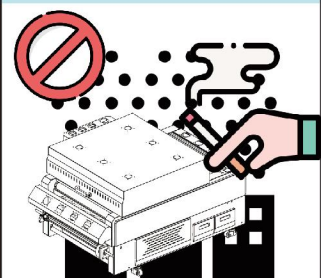
Places directly exposed to air conditioning



Places subject to significant changes in temperature or humidity



Places where open flames are present



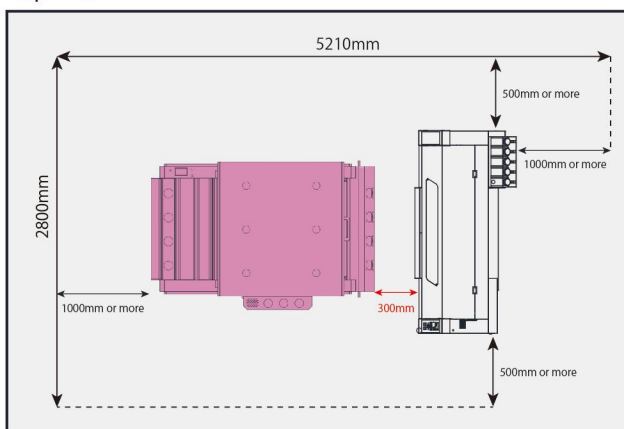
Working Environment

Place of installation

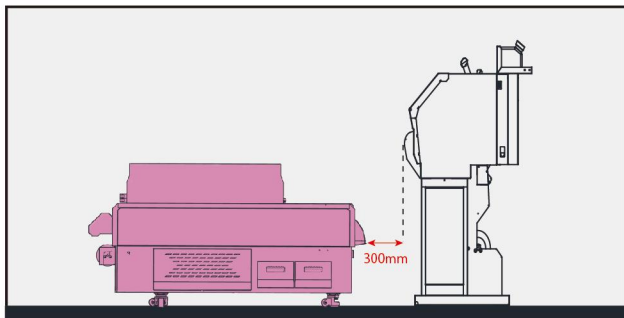
Before installing the machine, ensure that the required amount of space is available in the place under consideration. The place of installation must have enough space for the machine as well as transferring tasks.

Model	Width	Depth	Height	Total Weight
60cm-V16	1930mm	1140mm	1200mm	350kg

Top View



Side View



Temperature of working environment

To ensure reliable transferring, use the machine in an environment of 20–28°C.

Chapter 1

Before Use



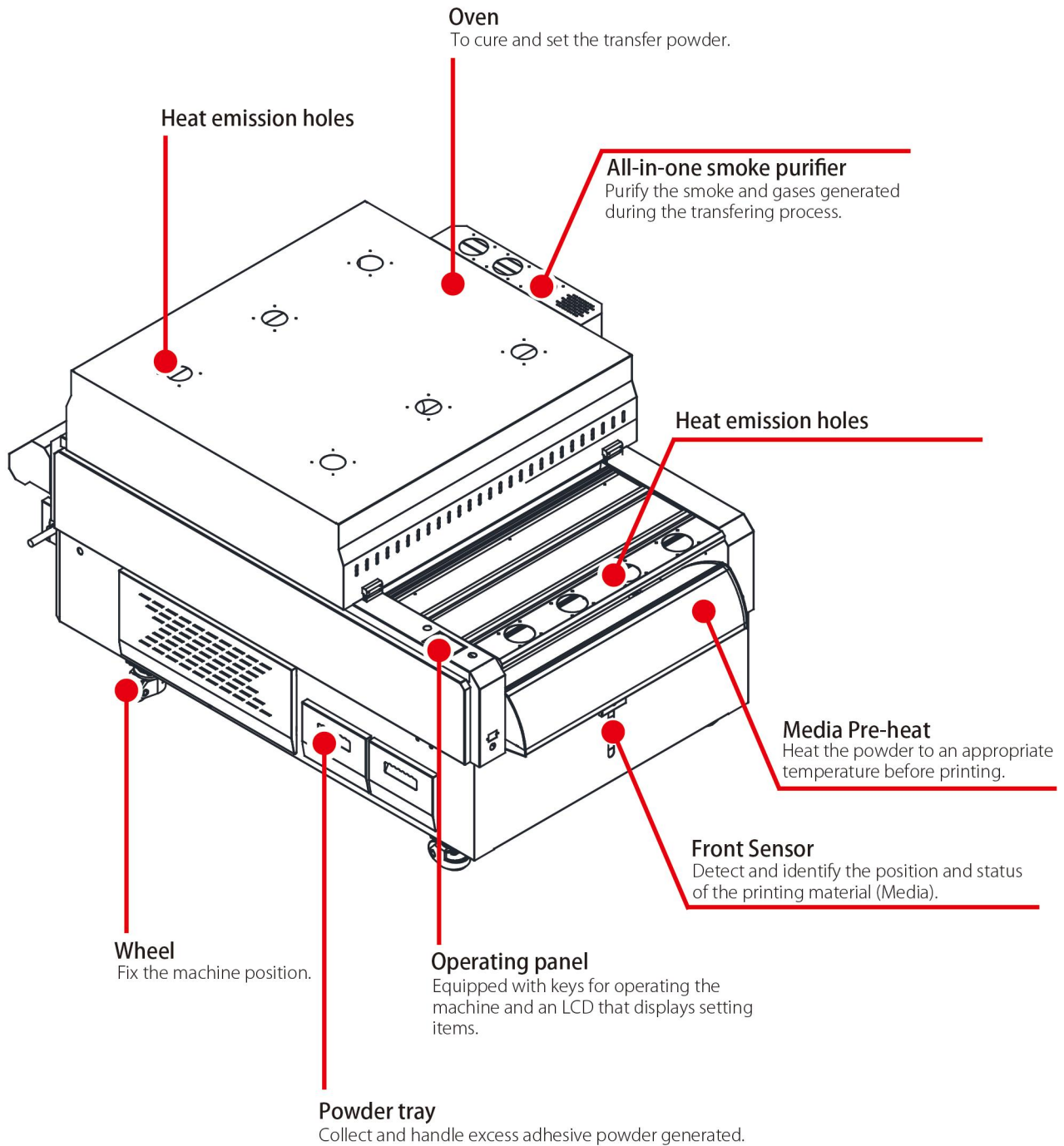
About this chapter

This chapter describes information to know before use, such as part names and installation instructions.

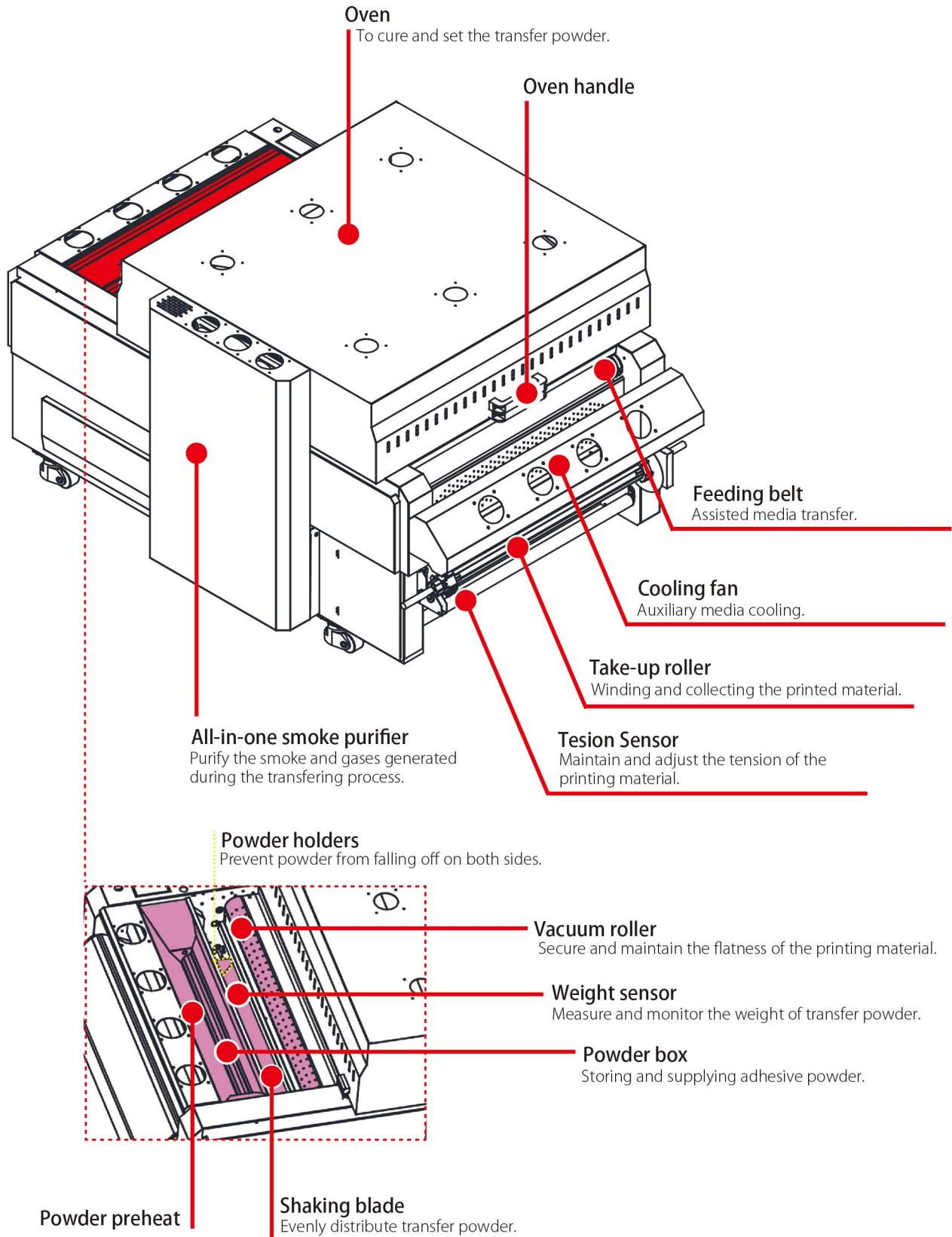
Part Names and Functions	1-1
Fronts	1-2
Rear side	1-3
Operating panel	1-4,5
Front sensor	1-6
Powder box	1-6
Powder shaking blade	1-6
Lamp	1-6
Tension sensor	1-6
Powder configuration requirements	1-7

Part Names and Functions

Front

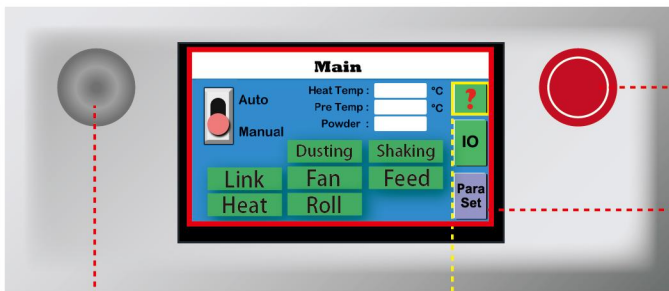


Rear Side



Operating Panel

Use the operating panel to specify print settings or operate the machine.



Main Power
Press to turn on / turn off the machine

Information
The detailed introduction of each interface

Emergency Stop
Press to quickly and immediately halt the operation of the machine in case of an emergency or potential hazard

Intelligent touch display
Shows the following items:
1) Seven setting functions
2) Auto/manual mode
3) Heat temperature
4) Pre temperature
5) Powder sensor
6) Input/Output setting
7) Para setting
8) Main menu

* 1.Function introduction

Icon	Details
	Means for "LINK mode", can only be activated in the machine's automatic mode . After completing a printing job and stopping the transfer operation, cut off the transfer film from the printer and initiate the machine's Link mode. Then the machine will automatically complete the remaining transfer process.
	To activate the machine's heating function.
	To initiate the powder box to dust powder.
	To start the operation of the Vacuum roller.
	To initiate the tension system.
	To activate the powder shaking function.
	To start the Net belt, initiating the paper feeding movement of the machine.

 Not on working status	 Is on working status
---------------------------	--------------------------

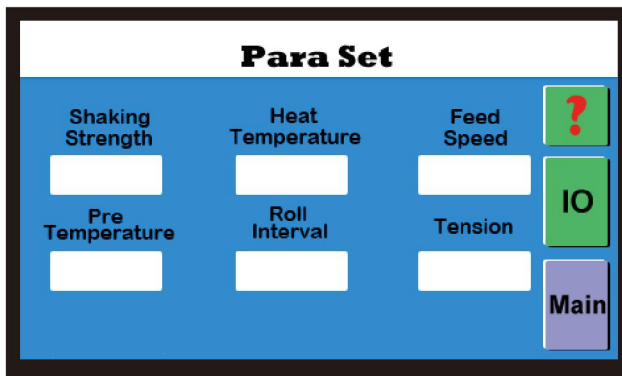
* 2. Temperature

Icon	Details
Heat Temp	Show the current temperature of oven.
Pre Temp	Show the current temperature of pre-heater.
Powder	Show the current capacity of powder in the weight sensor, display showing a minimum value of 0 and a maximum value of 100 (0-100).

* 3. Para Set



The parameters for this function have already been adjusted to their optimal working state before leaving the factory. Please do not modify the parameters privately. If you need to make changes, please contact our sales representative. We will assist you in adjusting the parameters according to your requirements.



1) Shaking Strength

Frequency of the powder blade intensity apart from work.

2) Heat Temperature

Operating temperature of the oven

3) Feed Speed

The speed of media feeding

4) Pre Temperature

Operating temperature of the oven

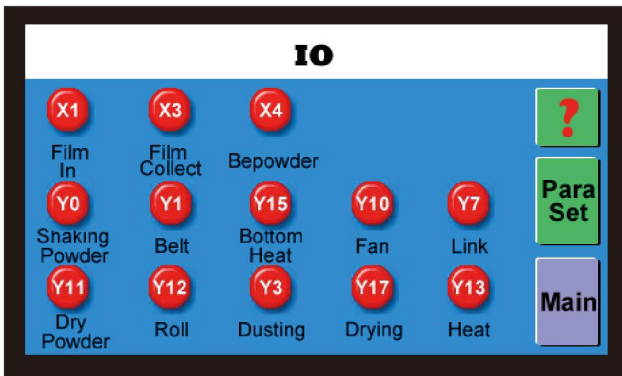
5) Roll Interval

Media interval time in LINK mode

6) Tension

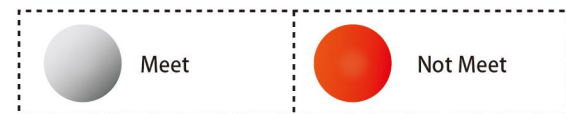
This function does not work on this machine, no need to pay attention.

* 4 . Input/Output setting



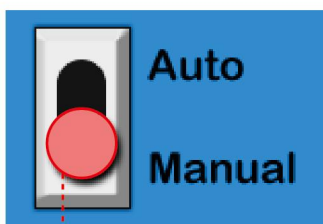
· The displayed parameters here correspond to the working status of their respective names and do not support manual adjustment.

· Icon color varies depending on the function working status.
Red: Working status can not meets the standard
Grey: Working status meets the standard



To determine the specific working status, please contact your sales to get details, or press the "?" button to know more.

* 5. Auto/ Manual mode



Switch to choose Auto mode or Manual mode of the machine.



Auto mode:

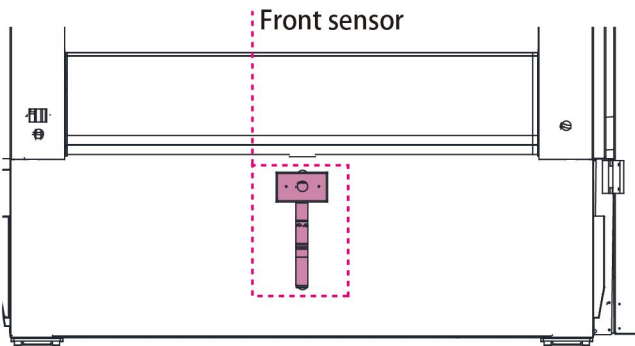
When the powder capacity value reaches 80 and the oven temperature conditions are reached specified temperature, and the Front sensor has sensed the film, the machine can initiate the automatic transfer mode, allowing one person to operate three machines simultaneously.

Manual mode:

In manual mode, the machine allows adjustment of various parameters, enabling real-time monitoring and adjustment of machine operations.

Front Sensor

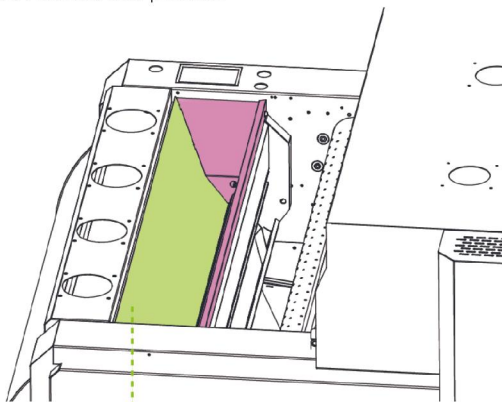
The front sensor is used to detect whether the machine has fed in media. The machine is equipped with one front sensor, located beneath the media pre-heat.



The front sensor has unlimited adjustable height levels, allowing users to adjust it to the appropriate position based on their needs.

Powder box

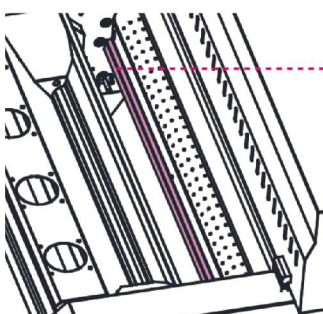
The powder box's main functions include Powder Storage, Powder Supply and Convenient Replacement, ensuring a continuous supply of powder and high-quality printing results during the digital heat transfer process.



Powder preheat

Its purpose is to maintain a high level of dryness for the hot-melt powder inside the box, preventing it from absorbing moisture.

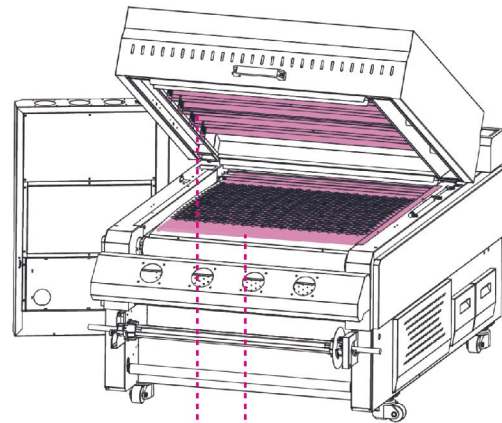
Powder shaking blade



Powder shaking blade

Contributing to the uniform distribution of transfer powder through vibrational motion, thereby ensuring high-quality and consistent printing results, located beneath the vacuum roller.

Lamp

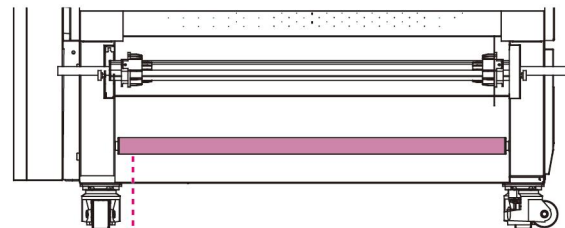


The upper and lower double rows of high-efficiency heating lamps (lower row is under the feeding belt)

Combined with our unique intelligent heating solution, which can save a minimum of 5kw compared to shakers from other brands.

Tension sensor

Tension sensor is used to maintain and adjust the tension of the printing material, besides It helps maintain print quality, facilitate powder transfer, and ensure accurate printing positioning by adjusting the tension of the printing material.



Tension sensor

Located beneath the take-up roller.

Powder configuration requirements

* 1. Powder Supply



It is important to confirm whether the voltage of the power supply at the location where you are using the machine is compatible with the machine's power requirements.

- If the machine is designed for 110V, please connect it to a 110V power outlet;
- If it is designed for 220V, then connect it to a 220V power outlet.

* 2. Wiring requirements



The machine does not come with an electrical outlet; instead, it can only be powered by wiring directly to the electrical supply.

Must follow:

- 1) The width of the power cord must be greater than 6 square millimeters
- 2) Professional electrician technicians are required for wiring
- 3) Due to the high voltage, there is a risk of electric shock for non-professionals; professional handling is recommended.

Chapter 2

Basic Operation



About this chapter

This chapter describes information about basic operation, such as how to load printing media, how to use auto mode and link mode correctly.

Workflow	2-2	Auto mode	2-5
Turning the Power On/OFF.....	2-3	Switch to auto mode.....	2-5
Turning the power on.....	2-3	Conditions of AM.....	2-5,6
Turning the power off.....	2-3	Stick the media.....	2-6
Emergency stop.....	2-3	Link mode	2-7
Loading Media	2-4		
Adjusting Sensor height.....	2-4		
Loading roll media.....	2-4		
Pouring power.....	2-5		
Pouring power.....	2-5		

Workflow

1

Turning the power on/off

See [turning the power on/ off]
Page 2-3.

2

Loading media

See [Loading power] Page 2-4.

3

Pouring powder

See [Loading power] Page 2-5.

4

Auto mode

See [Auto mode] Page 2-5,2-6.

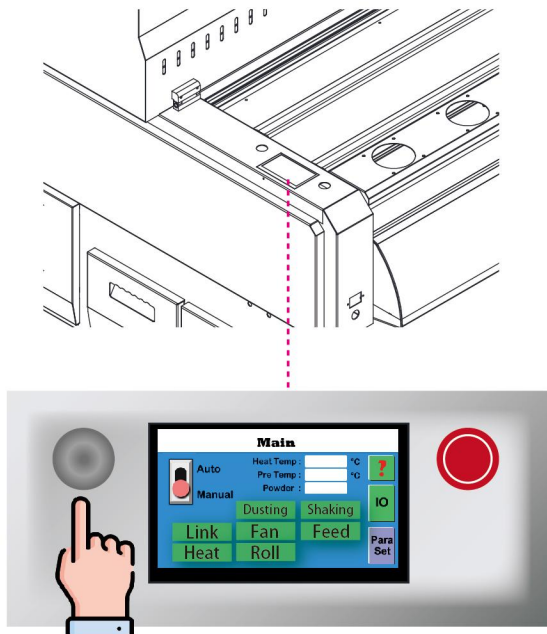
5

Link mode

See [Auto mode] Page 2-7.

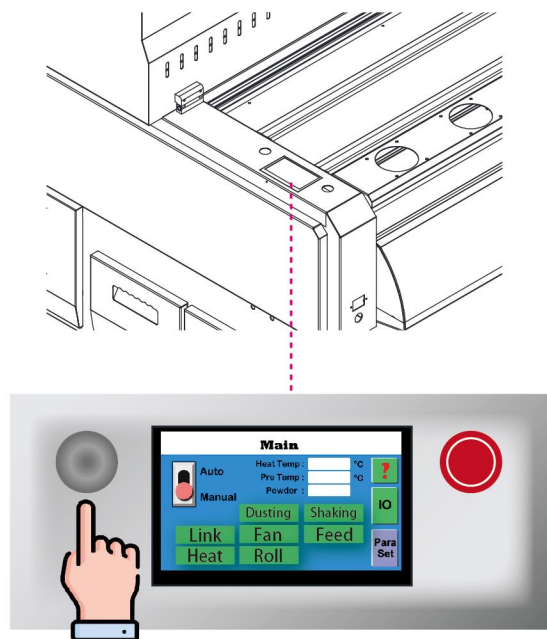
Turning the power on/off

Turning the power on



Press to turn on the machine

Turning the power off

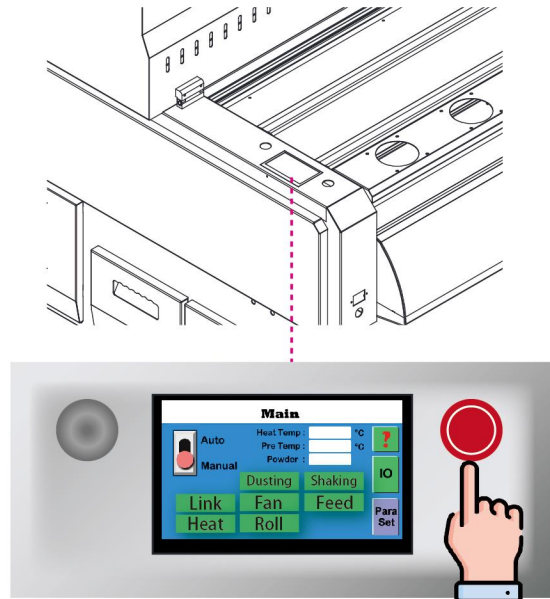


Press to turn off the machine



Please ensure that the machine completes the transfer operation before turning off the power

Emergency Stop



- 1) Press to activate
- 2) Rotate the button to the right to exit the emergency stop state

WARNING

Emergency Stop



CAUTION

Emergency stop can be activated only in the following situations:

- **Emergency Scenarios:** In case of emergencies or potential hazards, the emergency stop button or switch is used to quickly initiate the emergency stop. This rapidly halts all movements of the machine to prevent injuries or equipment damage.
- **Loss of Control:** If the operator loses control of the machine and is unable to handle unforeseen circumstances, the emergency stop is employed to swiftly halt machine operations.
- **Equipment Malfunction:** When there is a malfunction or abnormal operation of the equipment, the emergency stop helps prevent further damage and protects both operators and the equipment.
- **Safety Checks:** During maintenance or safety checks, it may be necessary to activate the emergency stop to ensure the safety of personnel.

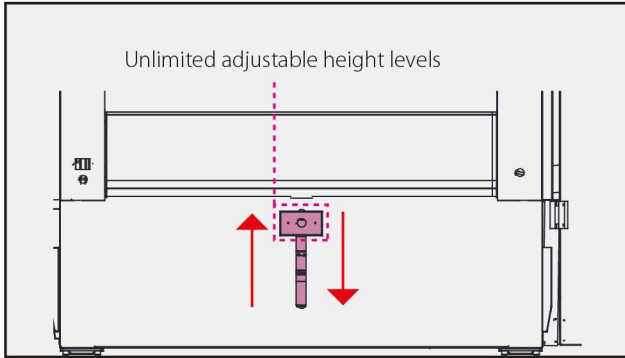


It's important to note that the emergency stop is intended for responding to urgent situations or ensuring safety, **so it should be used sparingly under normal circumstances.** After activating the emergency stop, a proper inspection and maintenance of the machine are usually required to ensure its safety and normal operation.

Loading Media

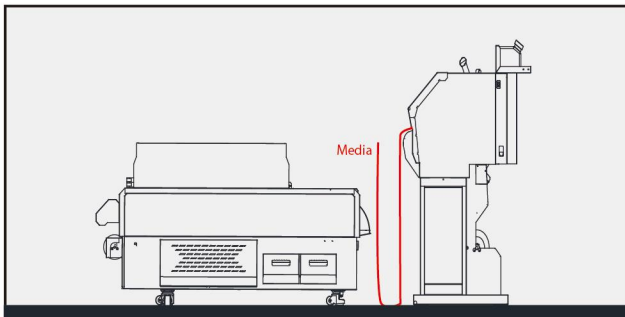
Adjusting Sensor Height

- 1 Adjust the sensor height.

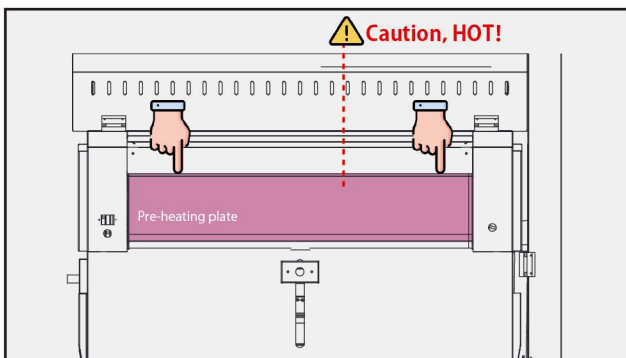


Loading roll media

- 1 Wait till the media long enough. The media length should generally reach the ground, also higher than the machine.

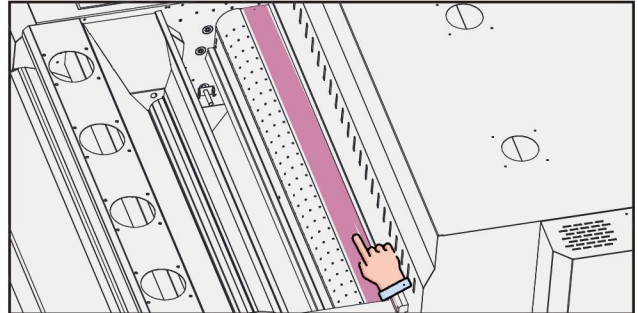


- 2 Put the media into the shaker. The entrance is as shown in the diagram, above the preheating plate.



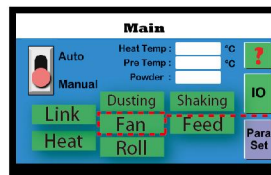
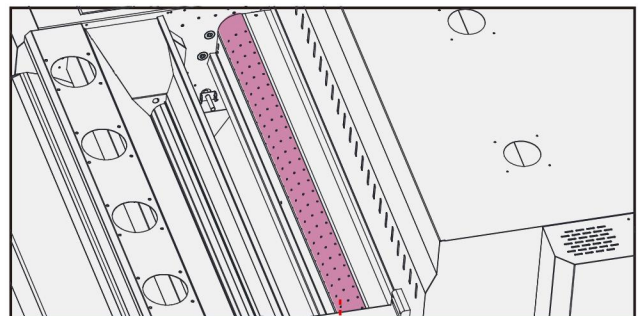
Loading roll media

- 3 Put the media into the oven. Ensure that the media is placed in the correct position for entry into the oven.

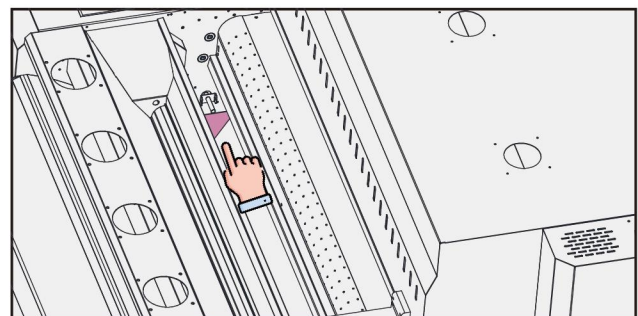


! After the media enters the shaker, as the shaker operates, the media will automatically bypass the weight sensor output. When the media has reached a sufficient length, it is necessary to manually place the media into the oven. The entrance of the oven is as shown in the diagram.

- 4 Turn on the "FAN" function. Activate the vacuum roller to hold the film and avoid it fall out before being fed into oven.

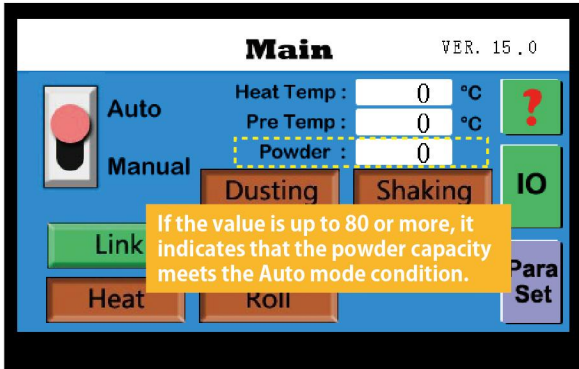


- 5 Adjust the position of powder holders. Ensure it adheres closely to the media on both sides.

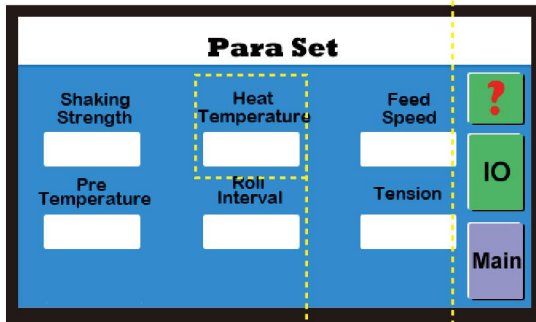
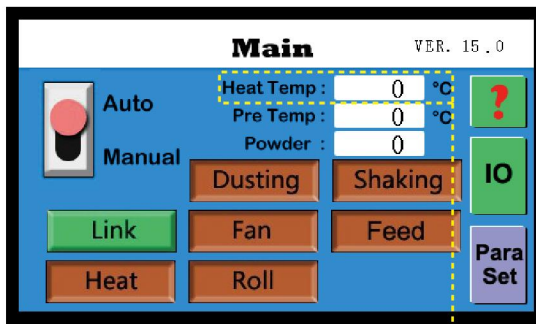


Conditions of Auto mode

- 2 Verify the 'Powder Capacity' in the Main Menu.



- 3 Verify the 'Heat Temp' in the Main Menu.



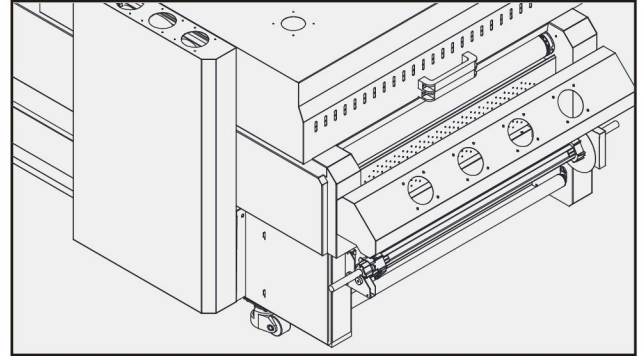
The temperature displayed in the main menu's 'Heat temp' must match the 'Heat temperature' set in the paraset.

- 4 Semiformal mode status.

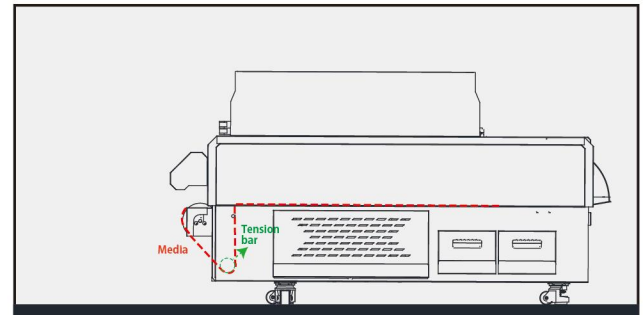
After the machine meets the above three conditions, it enters the semi-automatic mode status, allowing for the next step in the operation.

Stick the media

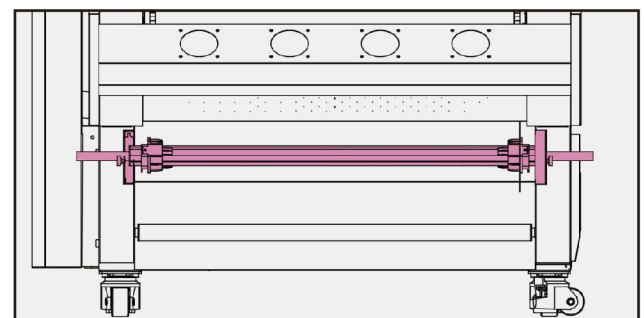
- 1 Await the media to pass through the oven



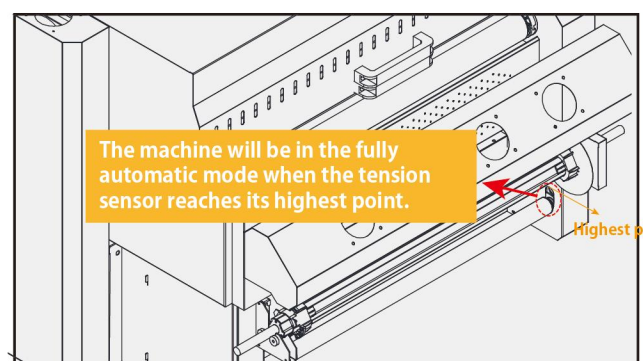
- 2 Wait till the media long enough.



- 3 Affix the media onto the take-up roller.



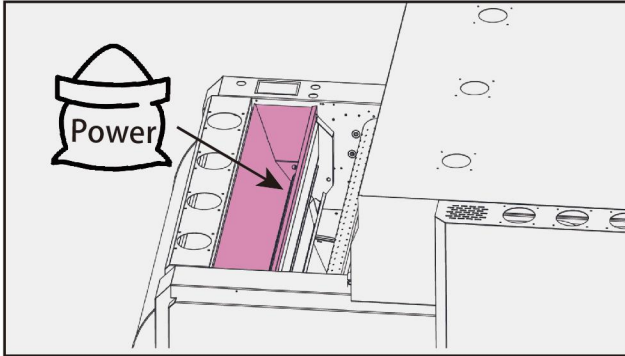
- 4 Fully automatic mode.



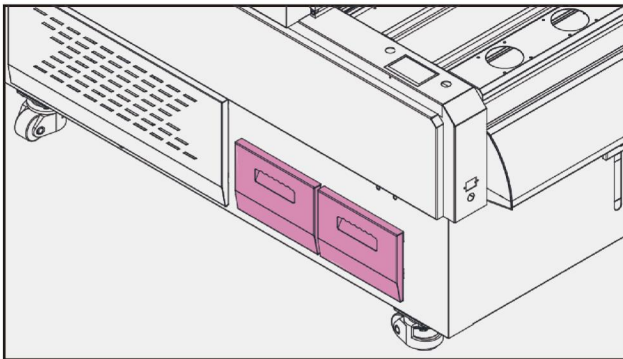
Pouring Powder

Pouring powder

- 1 Adding powder into the powder box.



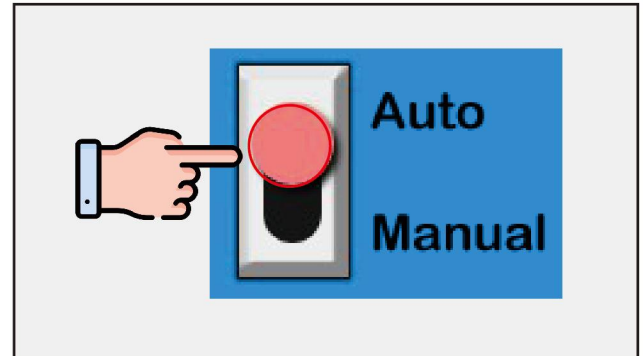
- 2 **Powder tray**
Opened adhesive powder can be stored in the powder tray to facilitate easy extraction for the next powder addition.



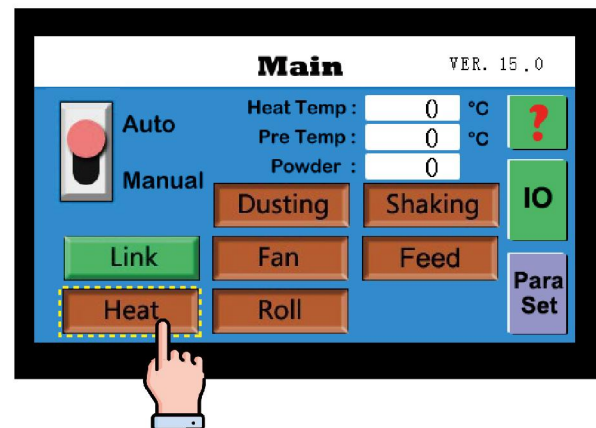
Auto Mode

Switch to Auto mode

- 1 Switch to Auto mode



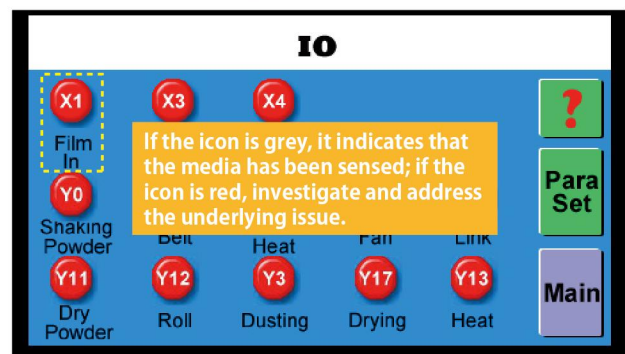
- 2 Turn on the "Heat" function.



Conditions of Auto mode

- ! To meet the working status of automatic mode, it's necessary to ensure that the machine's operational status meets the following three conditions:

- 1 Verify the 'Film in' function in the IO settings.



When machine is in fully AM



After the full automatic mode is activated, the feeding belt starts moving backward, the vacuum roller stops operating, and the tension take-up system gradually pulls and tightens the media through the oven.

Link Mode

Link mode

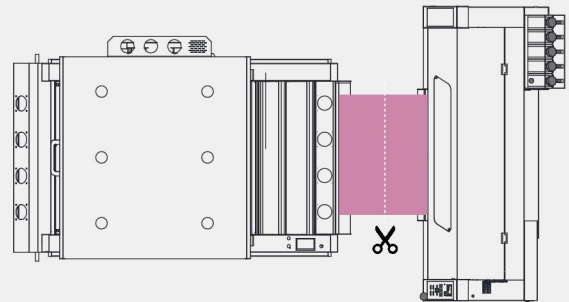


Link mode can only be activated upon completion of the transfer operation.

1

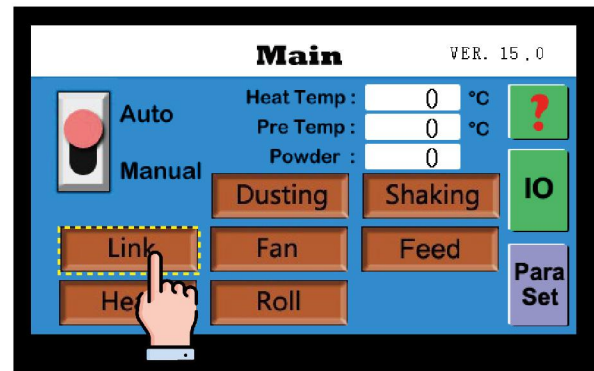
Cut off the media.

Top View



2

Turn on the Link mode.



3

Final.



After initiating the link mode, the machine will automatically complete the final heating work, ensuring the last media in the oven is fully baked until there is no media left inside.

Chapter 3

Maintenance Guidelines



About this chapter

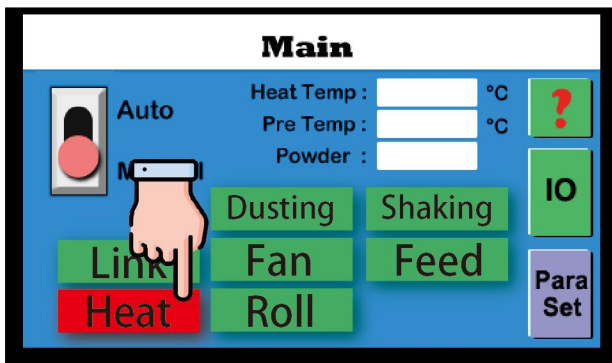
This chapter is about some daily maintenance guidelines of the machine, properly maintaining the machine can extend its lifespan.

Routine Maintenance	3-1
Before use.....	3-2
After use	3-2
Oven cleaning	3-2
Filter box.....	3-2
Replace the filter regularly.....	3-3
How to replace filter box.....	3-3
Replacement cycle	3-3
Kind tips.....	3-3



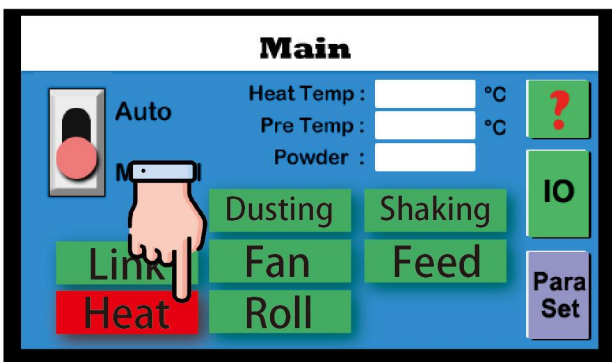
Due to the large amount of glycerin in the composition of DTF white ink, it is normal for oil and water condensation to appear on the metal surface after the machine is in operation. In order to prevent condensation from accumulating on the machine during long-term use, please follow the maintenance instructions below.

Before use



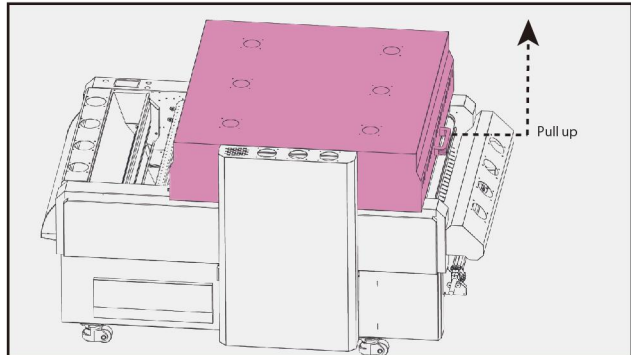
It is recommended to turn on the Heat function for 15 min before starting each work session to enhance the curing effectiveness.

After use



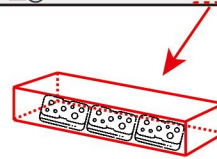
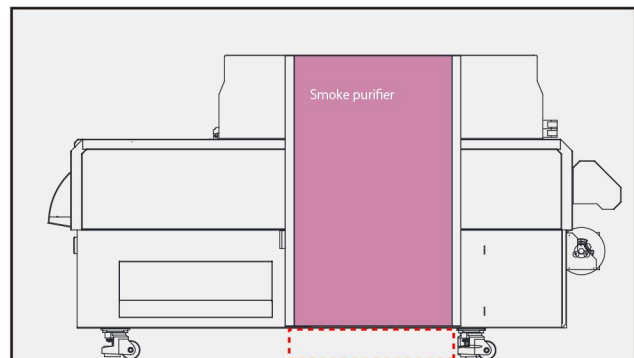
After each day's work, be sure to activate the Heat function for 15 minutes.

Oven cleaning



Open the machine oven and wipe off the oil inside the oil guide groove.

Filter box



While the machine has significantly reduced instances of oil leakage through continuous adjustments and upgrades, we recommend placing a tray filled with sponge at the bottom of the smoke purifier during machine usage to prevent any potential oil drips.

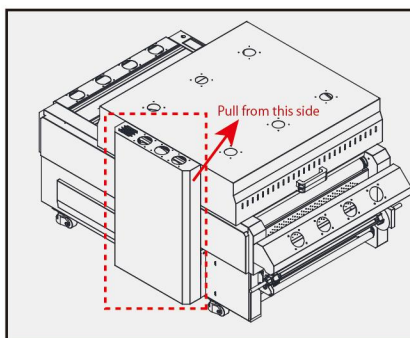
Replace the filter regularly

Replace the filter cartridge regularly according to the working condition, refer to the filter cartridge replacement guideline(as below):

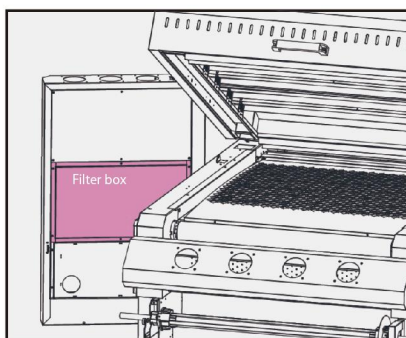
* 1. How to replace filter box



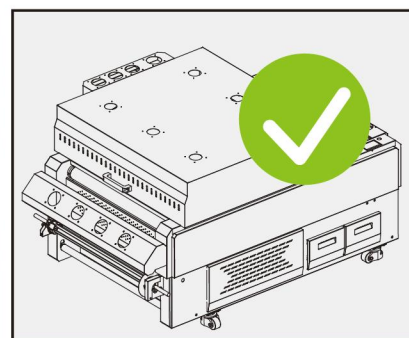
1 Open the Smoke purifier.



2 Loosen the screws securing the filter, then take it off.



3 Install the new filter.



* 2. Replacement cycle

Use status	Suggested replacement cycle
High frequency use	1.5 months
Low frequency use	3 months
If there is smoke	Replace the filter immediately



* 3. Kind tips

- 1** The filter element belongs to consumables and needs to be replaced regularly
- 2** The filter element replacement cycle is not the quality shelf life of the product.
- 3** Due to different use scenarios and frequency of use, the filter element replacement cycle varies. The specific use is based on the actual use.
- 4** Replace the filter element in a timely manner to ensure that the smoke filter reaches the best working state.