

Software

- [SSCOM Serial Debug Assistant](#)
- [RS485 TO WIFI/ETH Configuration Tool](#)

FAQ

Question: Why can't the configuration web page be opened in the computer's browser and cannot communicate with TCP?

Answer:

Set the IP of RS485 TO WIFI/ETH and computer to the same network address and different node address IP:

For example, RS485 TO WIFI/ETH IP is 10.10.100.254; computer IP is 10.10.100.253.

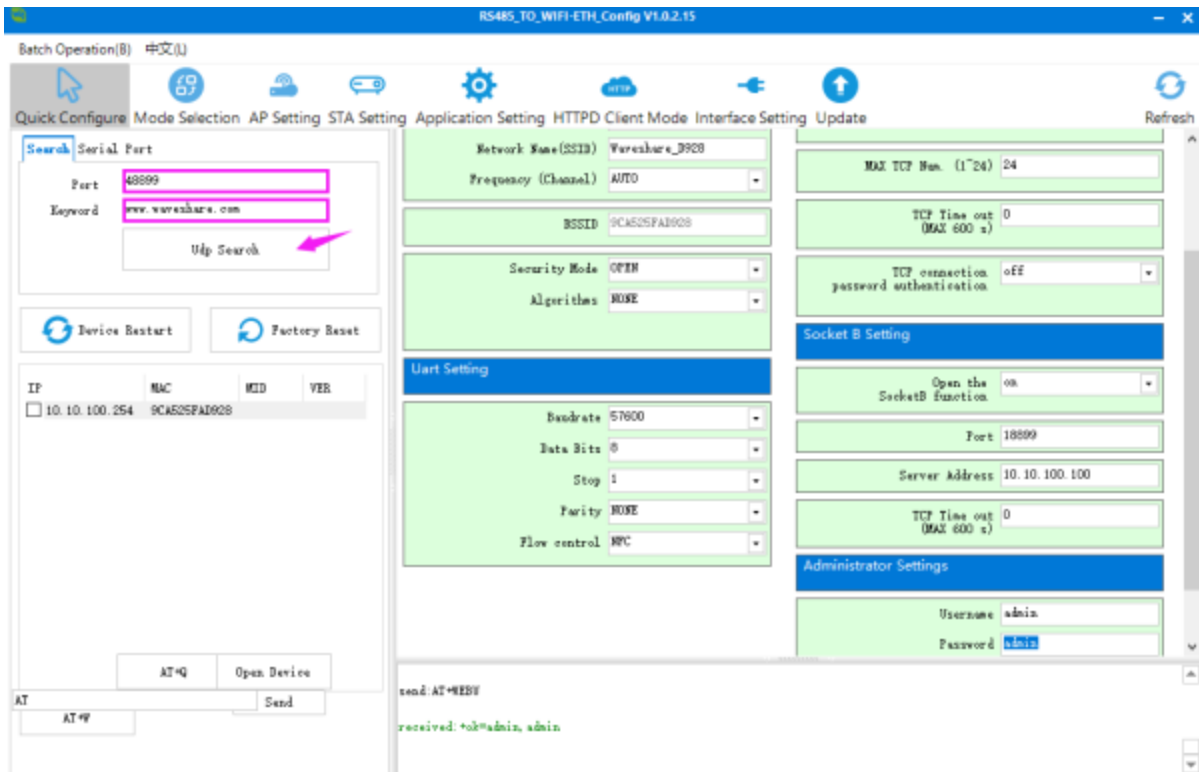
Question: I forgot my IP, what should I do?

Answer:

- If you have not changed your IP, the shipping IP defaults to 10.10.100.254;
- If you forget, you can configure the host computer tool in Windows to enter the corresponding parameters to search for the device IP, as shown in the figure below:

Port: 48899

Keyword: www.waveshare.com



Question: How to restore factory settings?

Answer:

After power on, press and hold the Reload button for more than 5 seconds to restore the factory settings:

After power on, press and hold for more than 5 seconds to restore factory settings



Question: Can RS485 be connected to more than one RS485 device?

Answer:

Yes, please use the handshake cascade method to access as below:

