

# Assembly Instruction

## KKSB Raspberry Pi 7 Inch Touch Screen Stand

Video showing the mounting is available

<https://www.youtube.com/watch?v=XmMMuvRkcTU>



### KKSB Raspberry Pi 7 inch touch screen display stand Assembly

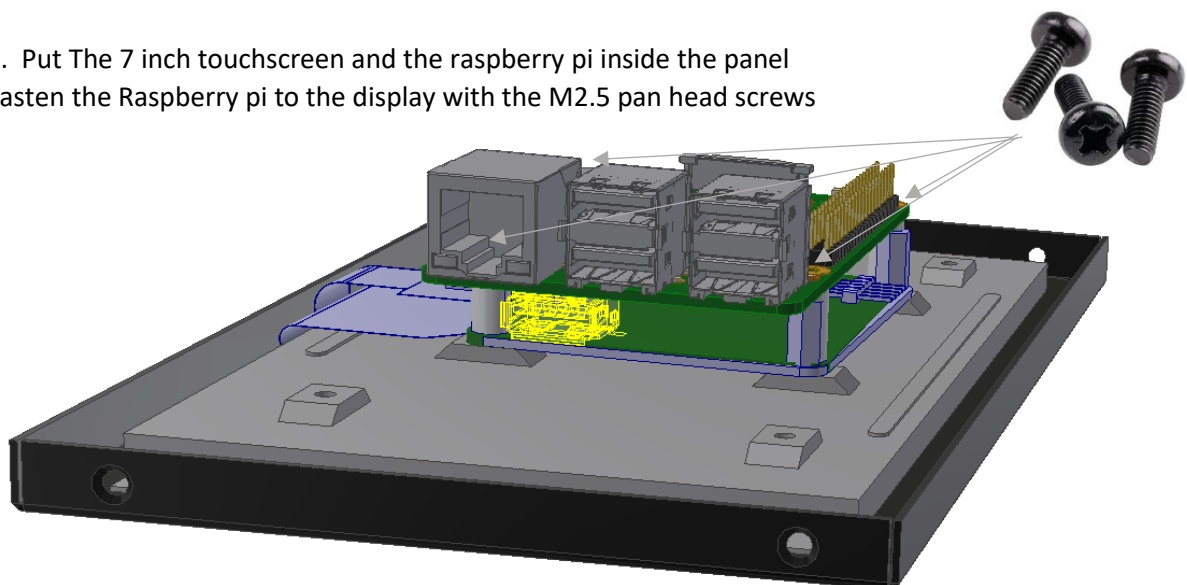
13 views · 4 days ago

Assembly instruction of KKSB Raspberry Pi 7 inch touchscreen stand. We show how to mount and dismount the product. The process is done step by step to show how to mount one of the Raspberry Pi

#### 1. Start with the front panel

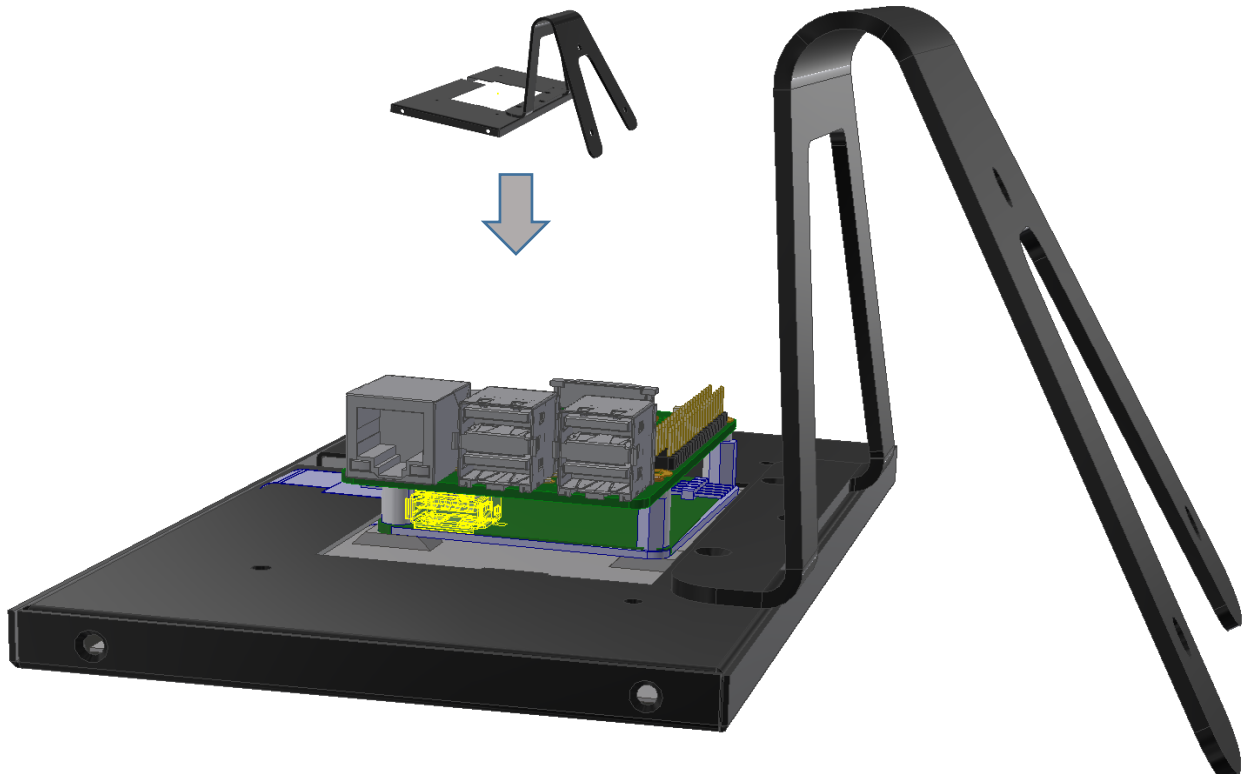


#### 2. Put The 7 inch touchscreen and the raspberry pi inside the panel Fasten the Raspberry pi to the display with the M2.5 pan head screws





3. Add the stand + back plate from the top

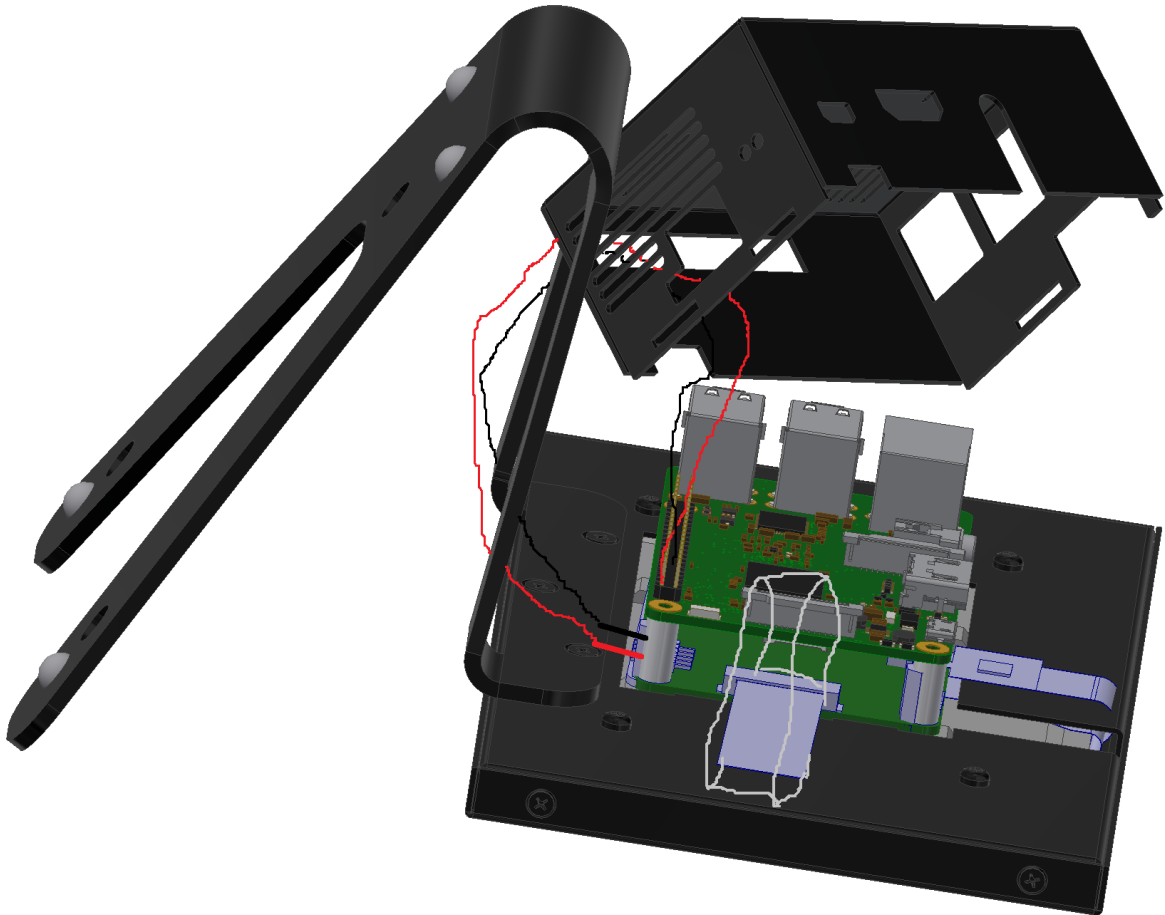


4. Mount the back plate with the M3 pan head screws. Add the self-adhesive rubber feet



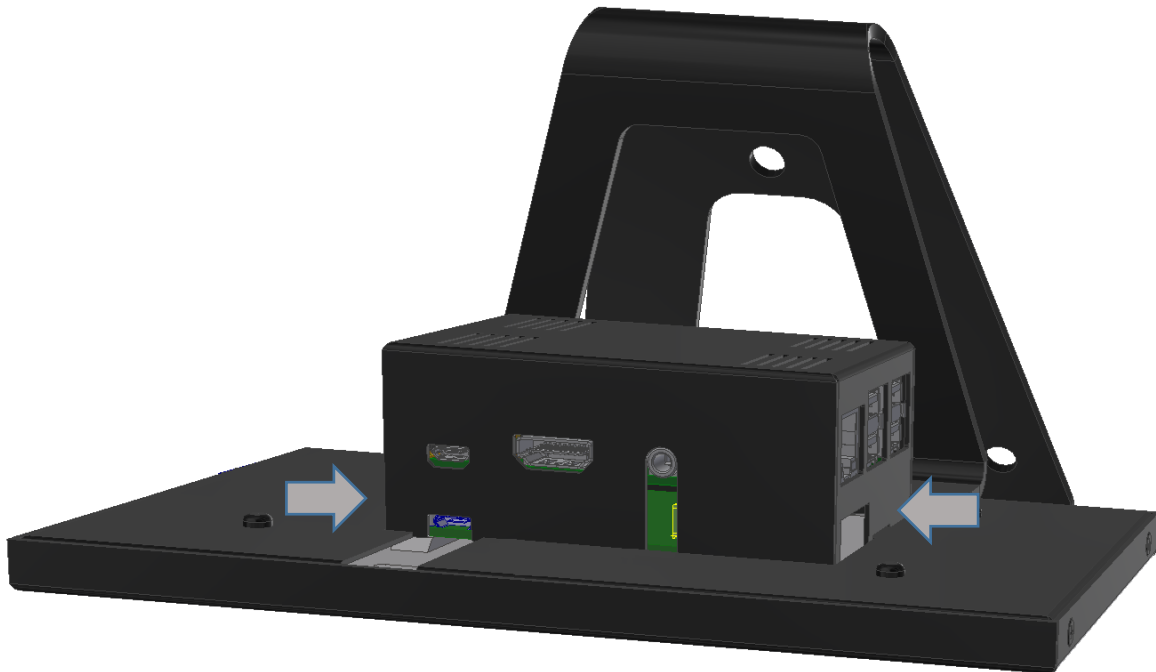


5. Connect the wires you need. Also connect the display cable and SD card



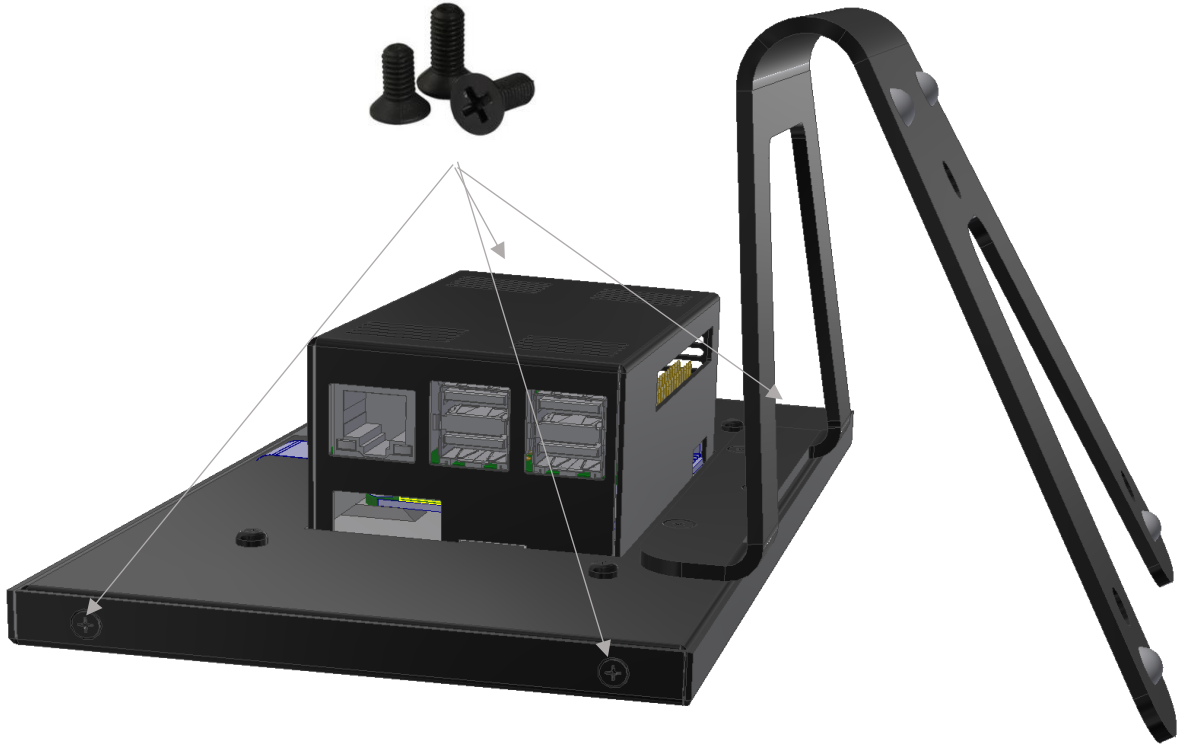


5. Push down the case and at the same time push in the short ends to snap into the back plate





6. Assemble the last screws



---

**Finished**

