

How to Set Up a Password for the Bot

The SwitchBot Bot is a Bluetooth device that does not need to be paired to a SwitchBot account to use. All we need to do is to get rid of the isolation tag, and it can be detected and accessed.

In that case, it is expected that anybody with a smartphone near this Bot can scan its Bluetooth signal and get to control it.

In order to avoid unwanted control of our Bot, we can set a password to it. After that, even those nearby who scan this Bot cannot control it without a correct password.

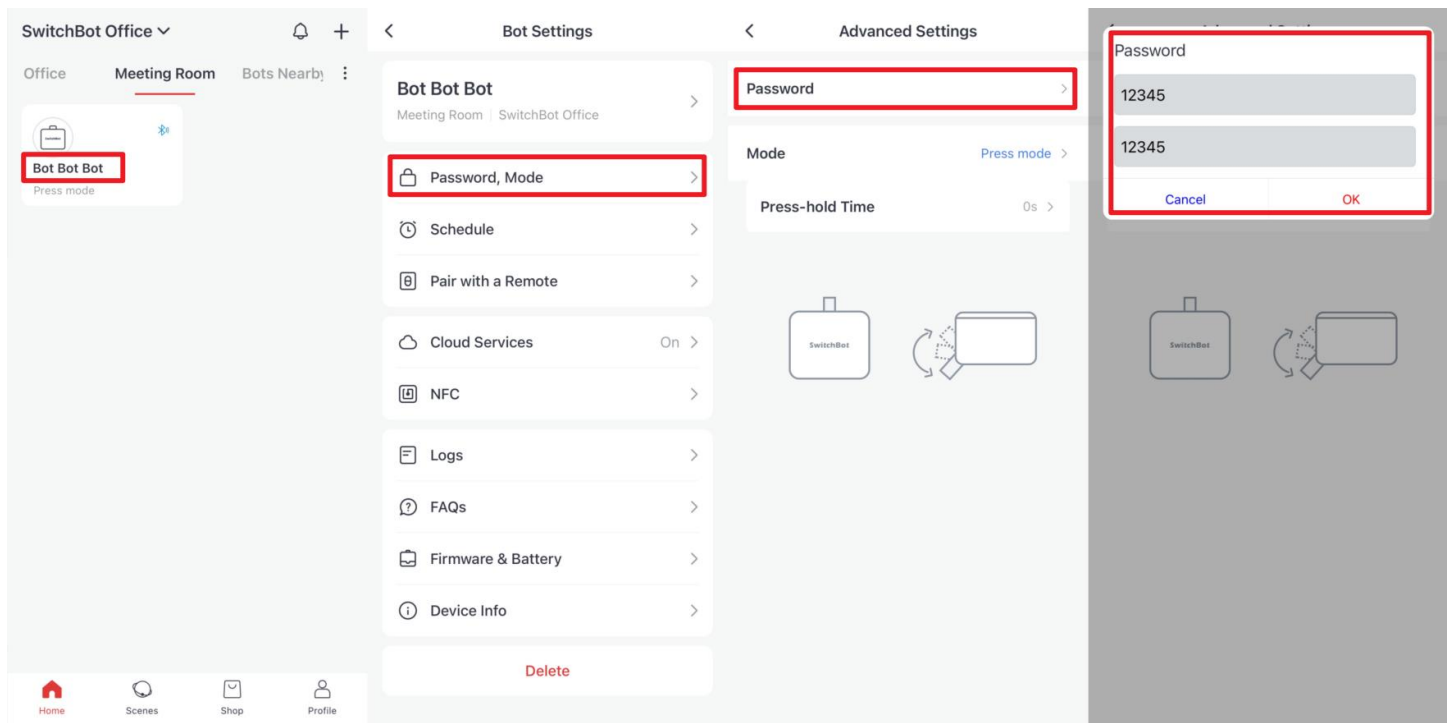
Please follow the guide to set a password for the Bot.

1. Find the Bot on the SwitchBot App.

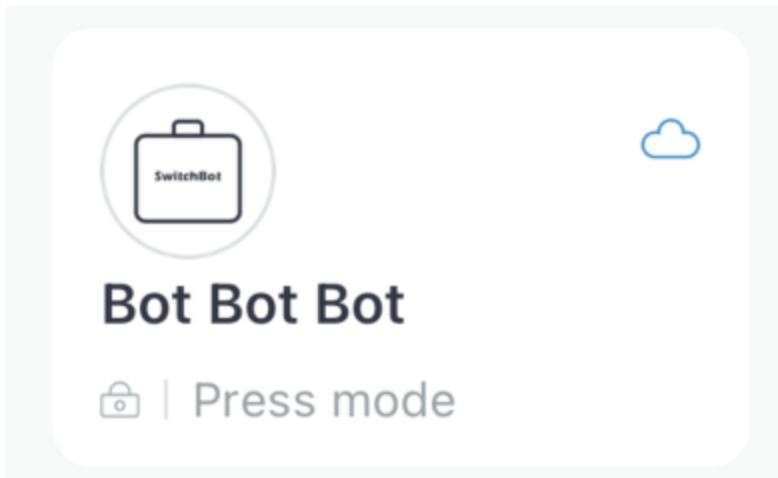
If we did not sign up for a SwitchBot account, the Bot will show up in the Bot Nearby section.

If we have added the Bot to our account, we can find the Bot on either All Devices or the relevant room section.

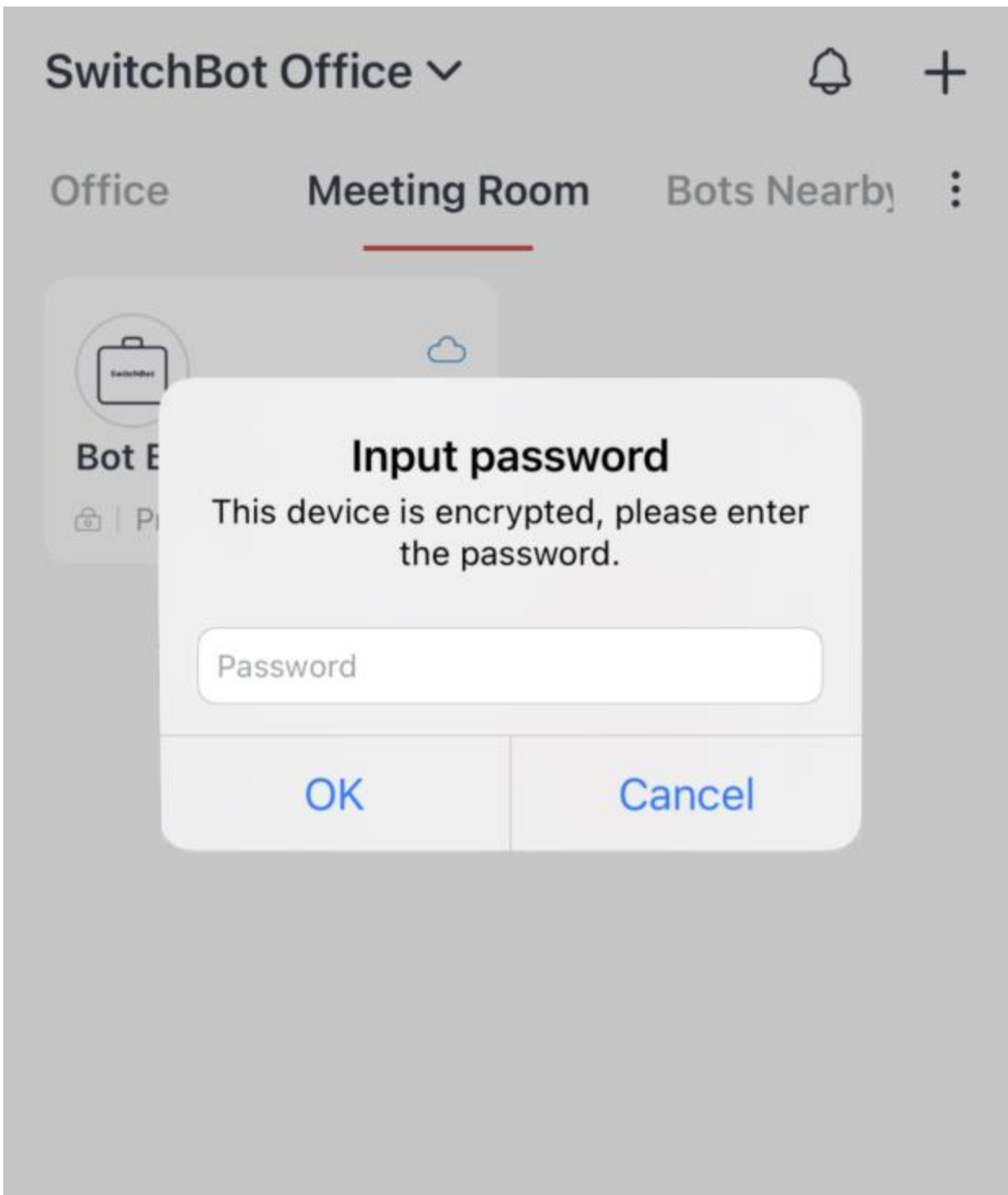
2. Go to the settings page of the Bot and we can set a password for it.



3. After setting up the password, there will be a little lock icon at the corner of the Bot on the homepage.



The first time to control this encrypted Bot, we are required to input the password.



If we want to change the password, we can go to the password settings to proceed.

If we forget the password somehow, we can reset the Bot and the password will be erased. Please follow the article below to see how to reset the Bot.

How to reset your Bot?

If you forgot your Bot's password or the Bot cannot work properly, you can try to reset it.

Please follow the below steps.

1. Open the Bot's cover.

2. Press the reset button shortly as shown in the picture attached. And the Bot will be reset. Please note: all settings will be removed, including timer, action mode, password.

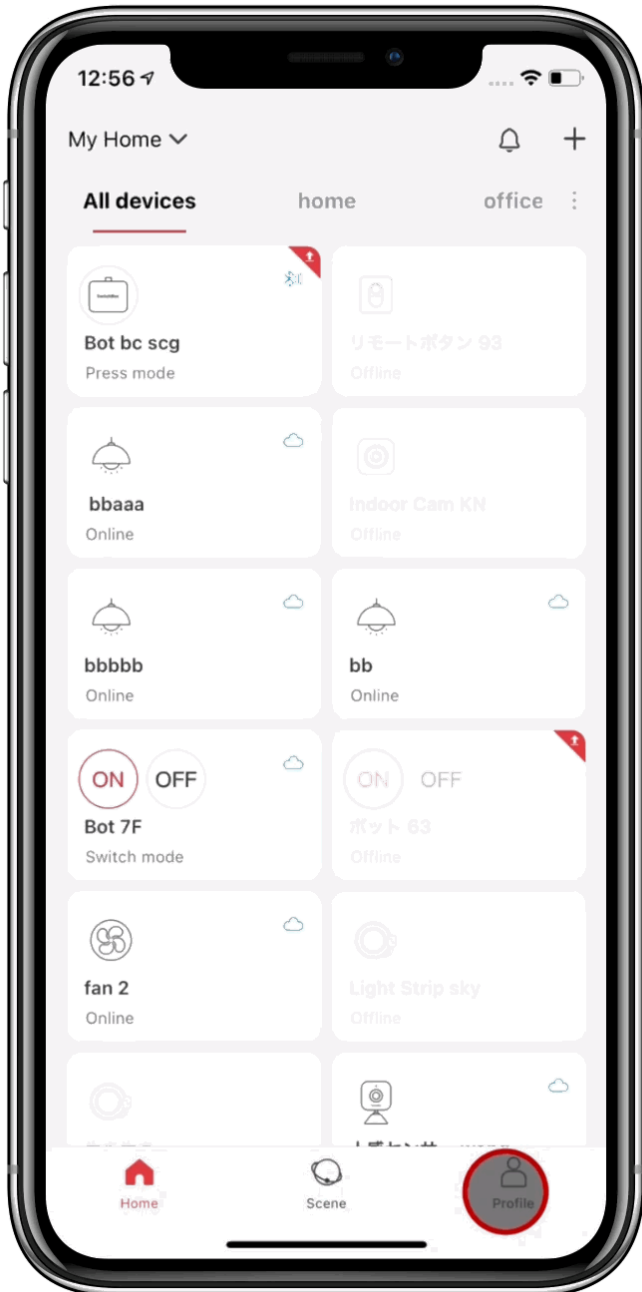


Beta Firmware for the Bot

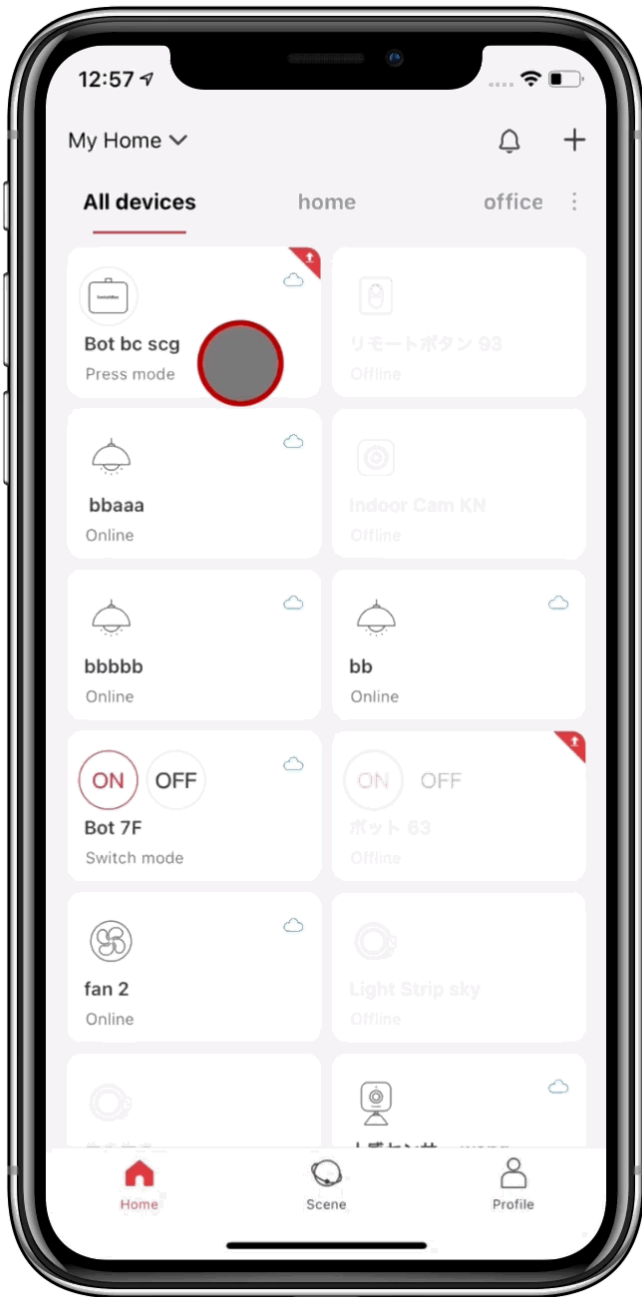
- We have a beta firmware for the Bot, which allows it to have more functions, including multiple-press, etc.
- Submit a feedback request on SwitchBot App, including [Bot beta 6.2 please.] in the content.
- Upgrade firmware to V6.2
- Set the Bot to Customized Mode.
- we can apply more commands to the Bot.
- Action treated as 'ON'
- Action treated as 'OFF'

We have a beta firmware for the Bot, which allows it to have more functions, including multiple-press, etc.

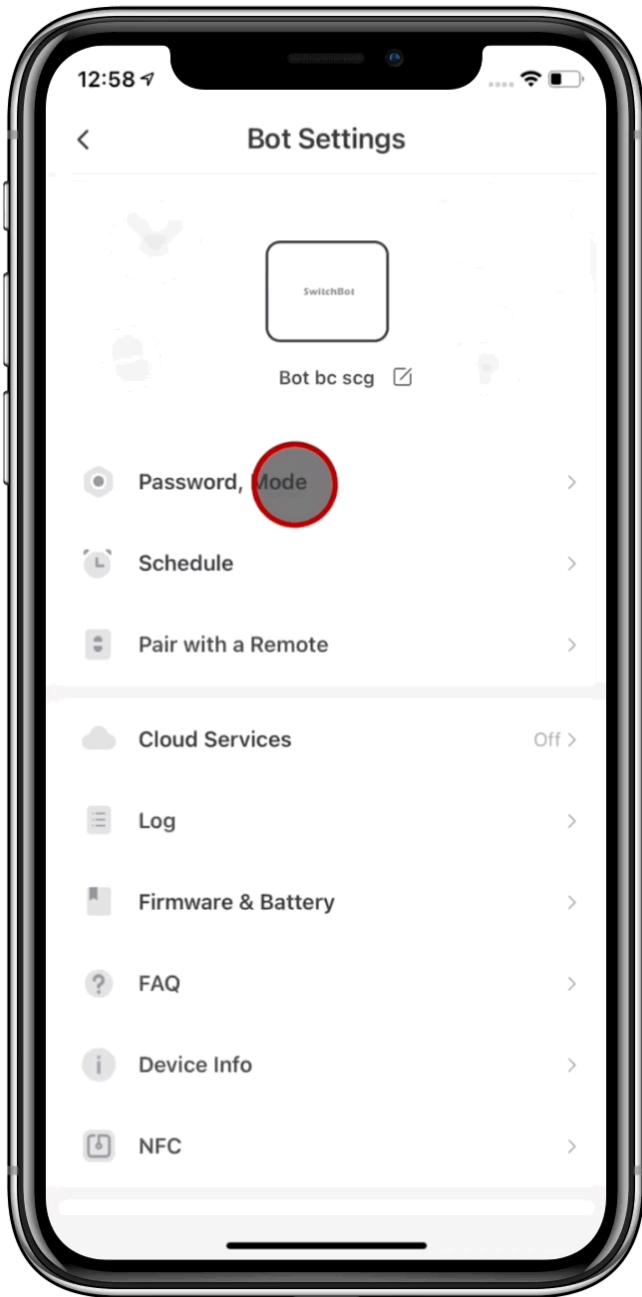
Submit a feedback request on SwitchBot App, including [Bot beta 6.2 please.] in the content.



Upgrade firmware to V6.2



Set the Bot to Customized Mode.

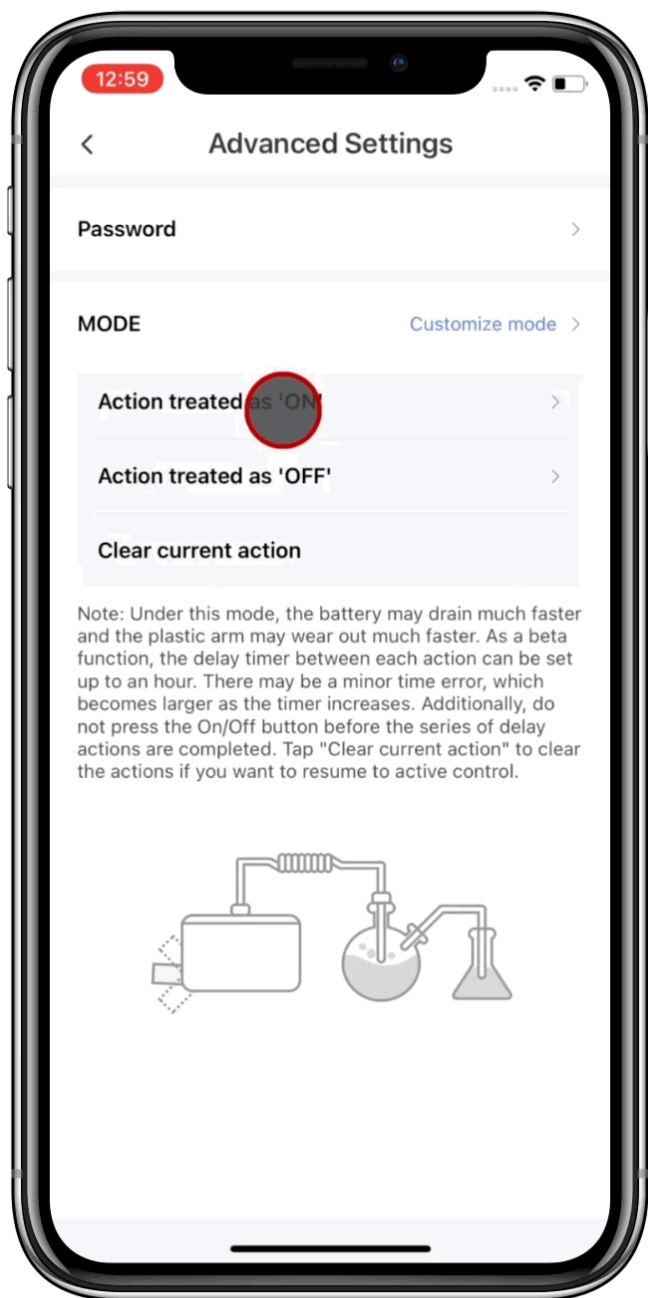


we can apply more commands to the Bot.

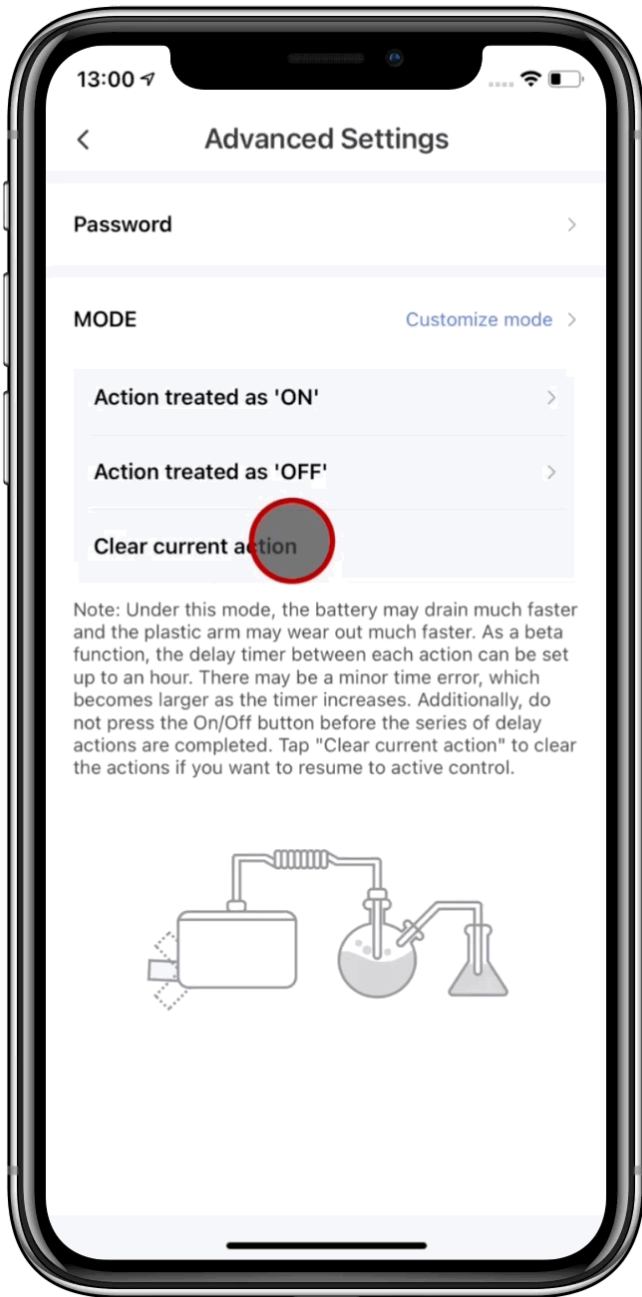
Let's look into it.

On the setting page of the Customized Mode, there are three options:

Action treated as 'ON'



Action treated as 'OFF'



Clear current action

We should consider action 'ON' and 'OFF' as two individual buttons that can be applied with different commands. Clear current action will do the job as the name says, deleting all the commands set to 'ON' and 'OFF'.

Let's set them up.



Action treated as 'ON'



Action

Step1

Delay



Step2

Delay



Press-hold Time

Repeat

Press Interval

— As shown below —

Step 1

Press-hold Time

0Second >

Repeat

Endless mode >

Press Interval

3Second >

Delay

0Second >

Add a new step

Clear current
action

Test action

On the 'ON' action, we set the Bot to do the pressing repeatedly every 3 seconds, with no holding time for each press.



Action treated as 'OFF'



Action

Step1

Delay



Step2

Delay



Press-hold Time

Repeat

Press Interval

— As shown below —

Step 1

Press-hold Time

3Second >

Repeat

4 times >

Press Interval

1Second >

Delay

0Second >

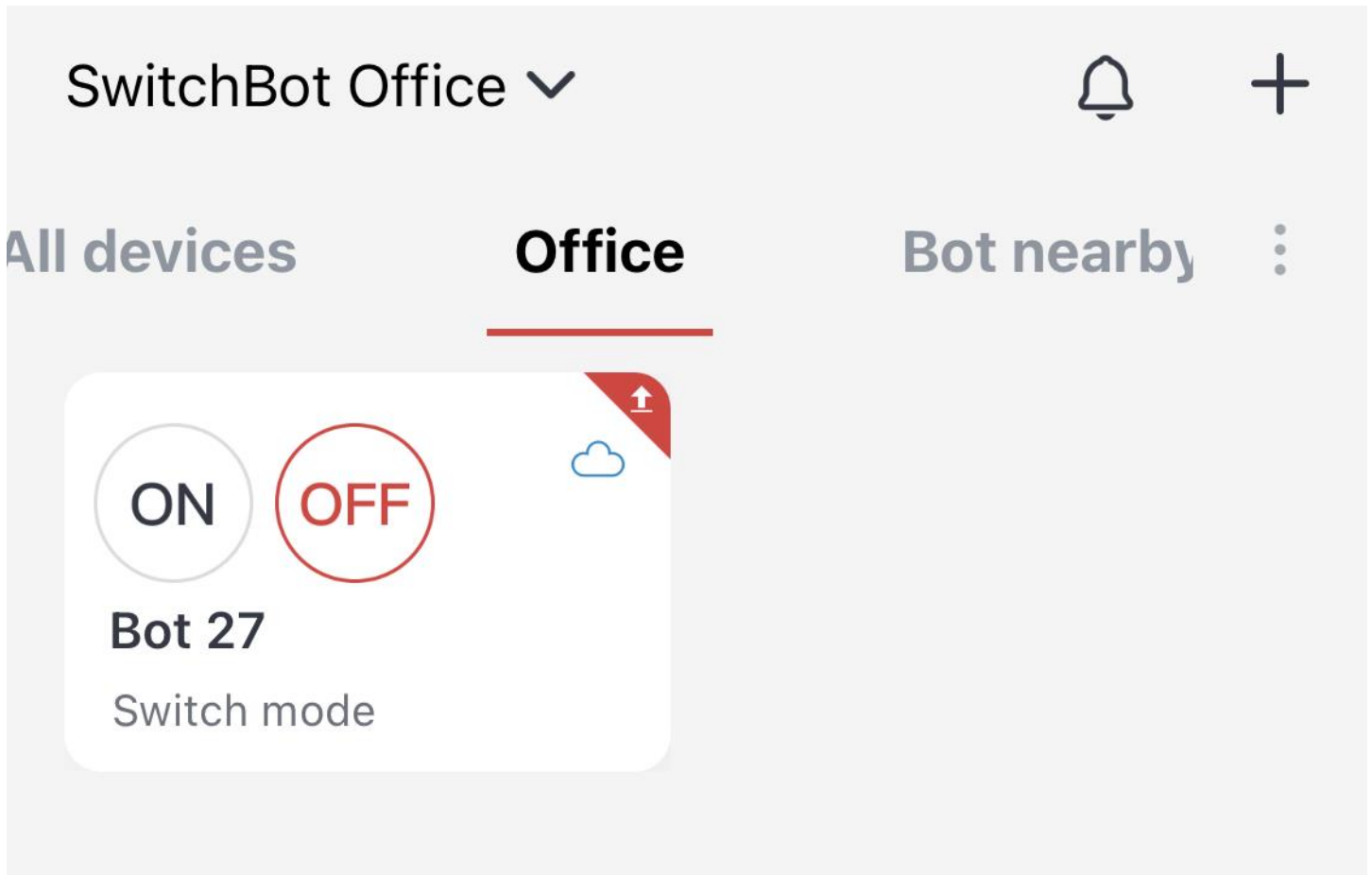
Add a new step

Clear current
action

Test action

On the 'OFF' action, we set the Bot to do the pressing 4 times. Each press will last for 3 seconds, with 1 second interval in between.

Now the action 'ON' and 'OFF' have been applied with commands. On the homepage, we will see there are two buttons for the Bot. When we tap the button 'ON', the Bot will do the pressing repeatedly every 3 seconds, with no holding time. When we tap the button 'OFF', it will do the job accordingly.



These are two simple examples in setting the commands for the Bot in the beta firmware. With this accessibility, we can create more commands for the Bot to meet our requirement in daily life.

If you are interested, please submit a feedback to get the beta firmware upgrade.

Note: Under the beta version, the battery may drain much faster and the plastic arm may wear out much faster too. As a beta function, the delay timer between each action can be set up to an hour. There may be a minor time error, which becomes larger as the timer increases. Additionally, do not press the On/Off button before the series of delay actions are completed. Tap Clear current action to clear the actions if you want to resume active control. Additionally, if you find any incorrect layout or text on the beta firmware setting page, please submit a feedback request on App. We appreciate your effort.

The Long Press Mode of the Bot

If you set a long-press time for the Bot, the Bot will press and hold for the time that you set for it no matter which method you use to control the Bot (IFTTT, Alexa, Google Assistant, Siri, or App).

Set up your SwitchBot Bot

1. Download the SwitchBot app.
2. Make sure Bluetooth and Location are enabled for the SwitchBot app.
3. Create your SwitchBot account or log in if you already have one.
4. Pull the plastic battery isolation tab
5. Click + in the upper right on the Homepage of the app to add the Bot in.
6. Attach SwitchBot near a rocker switch or button you want to control.

Optionally, use the add-on so SwitchBot Bot could push or lift up the rocker switch for ON/OFF control.