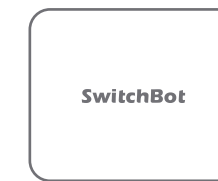
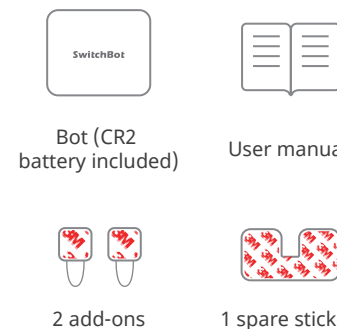


## SwitchBot Bot User Manual

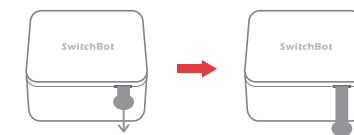


### In The Box



### Getting Started

1 Remove the plastic battery isolation tab.



2 Download the SwitchBot app.

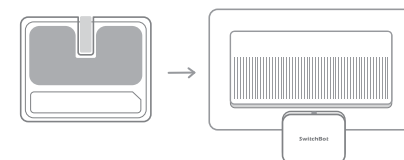


3 Enable Bluetooth on your smartphone.



4 Open the SwitchBot app and tap the Bot icon on the Home page to control it. If the Bot icon does not appear, swipe down to refresh the page.

5 Install Bot near the switch using the sticker. Note: Make sure the surface is clean and dry before applying the sticker. Then wait for at least 24 hours for the adhesiveness to take effect.



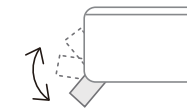
### Add to SwitchBot Account

Create a SwitchBot account and sign in from the app's Profile page. Then add Bot to your account. Learn more at, [support.switch-bot.com/hc/en-us/articles/360037695814](https://support.switch-bot.com/hc/en-us/articles/360037695814)

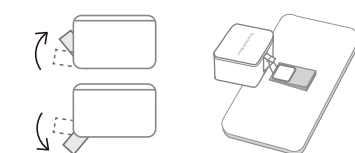


### Mode

The execution mode of Bot can be changed on the Settings page in the app.  
**Press mode:** for push button or one-way control switches



**Switch mode:** for push and pull switch (for use with add-ons)



### Voice Control

Alexa, turn on the living room light\*.

Hey Siri, make me a coffee\*\*.

OK Google, turn off the bedroom light\*.

\* Bot's alias set in the SwitchBot app.  
\*\* Personalized phrase recorded in Siri Shortcuts.

If you have a SwitchBot Hub Mini (sold separately), you can control Bot remotely using voice control services\*.  
\* Enable Cloud Service first before using voice control services.  
Learn more at, [support.switch-bot.com/hc/en-us/sections/360005960714](https://support.switch-bot.com/hc/en-us/sections/360005960714)



[www.switch-bot.com](https://www.switch-bot.com)

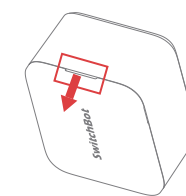
Setup and Troubleshooting: [support.switch-bot.com](https://support.switch-bot.com)  
Support Email: [support@wondertechlabs.com](mailto:support@wondertechlabs.com)

SwitchBot



### Replace the Battery

- 1 Prepare a CR2 battery.
- 2 Remove the cover from the notch on the side of the device.
- 3 Replace the battery.
- 4 Install the cover back on the device.

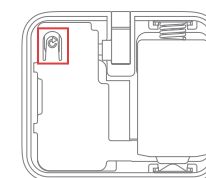


Learn more at, [support.switch-bot.com/hc/en-us/articles/360037747374](https://support.switch-bot.com/hc/en-us/articles/360037747374)



### Reset the Device

Remove the cover and press the reset button, the device's password, mode and timer will be restored to the factory state.



### Disclaimer of Warranties

- Only for use in dry rooms. Do not use your Device near sinks or other wet locations.
- Do not expose your SwitchBot to steam, extreme heat or cold. For example, do not plug in your SwitchBot near any heat sources such as space heaters, heater vents, radiators, stoves, or other things that produce heat.
- Your SwitchBot is not intended for use with medical or life support equipment.
- Do not use your SwitchBot to operate equipment where inaccurate timing or accidental on/off commands could be dangerous (e.g. saunas, sunlamps, etc.).
- Do not use your SwitchBot to operate equipment where the continuous or unsupervised operation could be dangerous (e.g. stoves, heaters, etc.).

### Return and Refund Policy

SwitchBot Bot has one year warranty (start from the purchasing day).  
The situation below do not fit the Return and Refund Policy

- Intended damage or abuse.
- Inappropriate storage (drop down or soaking in water).
- User modify or repair.
- Using loss.
- Force majeure damage (Natural disasters).

If you have any concern or problem when using our products, please kindly send feedback from the Profile > Feedback page in the SwitchBot app.

### CE Warning

1. Risk of explosion if battery is replaced by an incorrect type. Dispose of used batteries according to the instructions.  
2. The operating temperature of the EUT can't exceed 55°C and shouldn't be lower than 0°C. Hereby, Woan Technology (Shenzhen) Co., Ltd. declares that this product is in compliance with essential requirements and other relevant provisions of Directive 2014/53/EU. This product is allowed to be used in all EU member states.

### FCC Warning

This device complies with part 15 of the FCC Rules. Operation is subject to the following two conditions: (1) This device may not cause harmful interference, and (2) this device must accept any interference received, including interference that may cause undesired operation. Any Changes or modifications not expressly approved by the party responsible for compliance could void the user's authority to operate the equipment.  
This equipment has been tested and found to comply with the limits for a Class B digital device, pursuant to part 15 of the FCC Rules. These limits are designed to provide reasonable protection against harmful interference in a residential installation. This equipment generates uses and can radiate radio frequency energy and, if not installed and used in accordance

with the instructions, may cause harmful interference to radio communications. However, there is no guarantee that interference will not occur in a particular installation. If this equipment does cause harmful interference to radio or television reception, which can be determined by turning the equipment off and on, the user is encourage to try to correct the interference by one or more of the following measures:

- Reorient or relocate the receiving antenna.
- Increase the separation between the equipment and receiver.
- Connect the equipment into an outlet on a circuit different from that to which the receiver is connected.
- Consult the dealer or an experienced radio/TV technician for help. The device has been evaluated to meet general RF exposure requirement. The device can be used in portable

exposure condition without restriction.  
FCC RF Exposure statement:  
This equipment complies with FCC Radiation exposure limit set forth for uncontrolled environment. This equipment should be installed and operated with minimum distance 20cm between the radiator and your body.

### KCC Warning

인증받은자의 상호: Woan Technology (Shenzhen) Co., Ltd.  
제품명/모델명: 특정소출력 무선기기(무선데이터통신시스템용 무선기기) / SwitchBot S1  
제조사 및 제조국가: Woan Technology (Shenzhen) Co., Ltd. /China  
제조년월: 2019.10  
인증번호: R-C-24K-SwitchbotS1  
이 장치는 보안성이 없으므로 통신보안에 위배되는 사항의 통신을 금지하며 운용 중

### NCC 警語:

依據低功率電波輻射性電機管理辦法第十二條  
※經型式認證合格之低功率射頻電機，非經許可，公司、商號或使用者均不得擅自變更頻率、加大功率或變更原設計之特性及功能。  
第十四條  
※低功率射頻電機之使用不得影響飛航安全及干擾合法通信；經發現有干擾現象時，應立即停用，並改善至無干擾時方得繼續使用。  
-前項合法通信，指依電信法規定作業之無線電通信。  
-低功率射頻電機須忍受合法通信或工業、科學及醫療用電波輻射性電機設備之干擾。