

13.3inch HDMI LCD (H) (with case)

Introduction

13.3inch IPS screen, 1920x1080 high resolution. Toughened glass cover. Supports Multi mini-PCs, multi systems.

[more](#)

Features

- 13.3inch IPS screen, 1920x1080 high resolution
- Toughened glass capacitive touch panel, 6H hardness
- Supports popular mini PCs such as Raspberry Pi, BB Black, as well as general desktop computers
 - When works with Raspberry Pi, supports Raspbian, Ubuntu, WIN10 IOT, single touch, and driver free
 - When work as a computer monitor, supports Windows 10/8.1/8/7, ten-points touch, and driver free
- Multi languages OSD menu, for power management, brightness/contrast adjustment, etc.
- 3.5mm audio jack, supports HDMI audio output
- Embedded ferrite Hi-Fi speaker
- Also supports VGA input (specific cable is required and should be purchased separately)
- 75x75mm spacing mounting holes (M4 screw hole) for general wall mount
- Comes with 75° tilt angle stand

Working with PC

This product supports Windows 10/8.1/8/7 OS. :

1. Connect 12/1A power adapter to the DC interface of LCD, after connecting the back light will light.
2. Connect the TOUCH interface of LCD to the USB interface of PC . Waiting for a moment, The touch will be recognized by Windows automatically

3. If you use HDMI, you need to connect the HDMI interface of LCD to the HDMI port of PC. About 5s later, you can see that the LCD display properly. If you need the audio, you can insert a 3.5mm earphones to HP ports.

4. Use VGA,you need to connect the VGA interface of LCD to PC's VGA ports by [Mini HDMI to VGA Cable](#)

Note:

- 1) If multi screen are connected to one PC at the same time, you can only control the cursor by this LCD, so please set the LCD as main screen.
- 2) Some of PC cannot support HDMI screen Hot Plug . In this case, restart the PC can solve.
- 3) HP audio output only works while using HDMI communication
- 4) [Mini HDMI to VGA Cable](#) is necessary and need to be purchased separately if you use VGA communication.

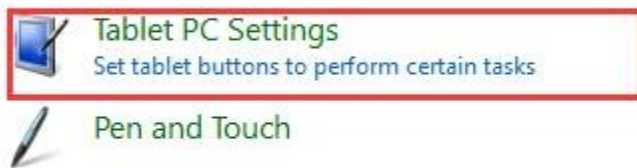
Touch Settings on Win 10 PC

Some users want to connect more than one display to their PC. Here we talk about how to setting the touch to make the touchscreen to control its screen separately.

- Connect touchscreen to PC. Here we use an standard PC monitor and connect an 7inch HDMI LCD (C) for example. We make the monitor as main screen and the touchscreen as secondary screen.
- By default,The touchscreen can only control cursor on the main screen. Here we set it to control the secondary screen
- Open Control Panel and search Tablet PC setting on the control panel and open the tool

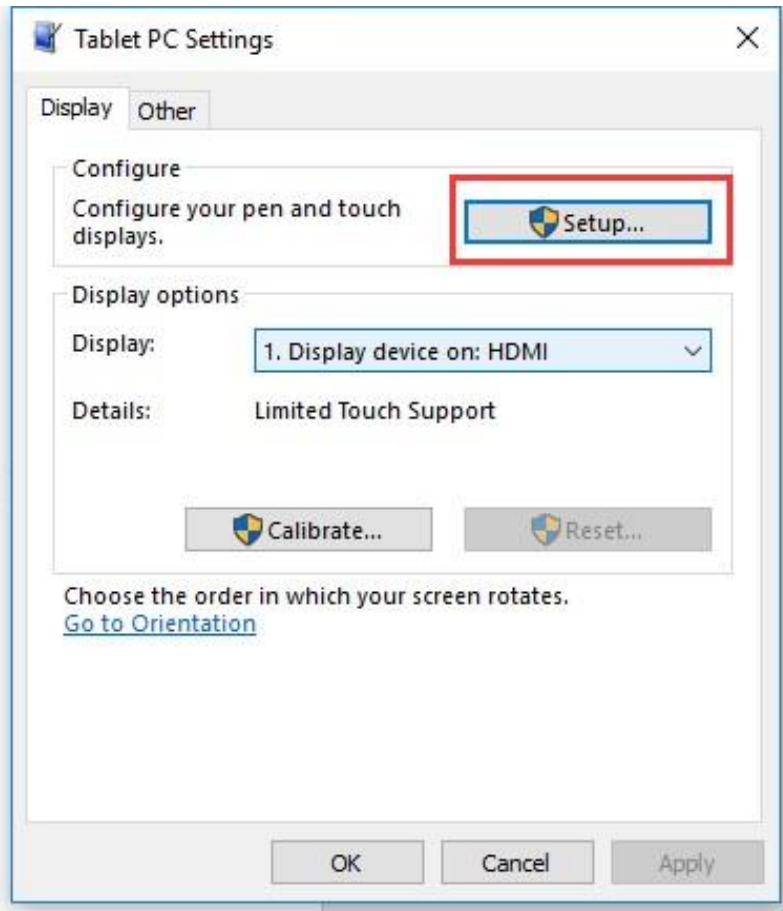
tablet - Control Panel

← → ▾ ↑  Control Panel >



 Search Windows Help and Support for "tablet"

- Click button "Setup..." to setting the touchscreen



- After click the setup you can find that there is prompt on your first screen with white color background and other screens are white.

Tap this screen with a single finger to identify it as the touchscreen.

If this is not the Tablet PC screen, press Enter to move to the next screen. To close the tool, press Esc.

- If we want the touch of the touchscreen to control the desktop of the touchscreen itself. Just press Enter key to pass the first screen. And the second screen, when you find that the black text is displayed on the touchscreen, just touch the center of the touchscreen to finish this setting.
- After this setting, the touch on the screen will just control this touchscreen even though it is not the main screen.

Note:

1 If the first screen and the second screen are touchscreen as well, you can touch them when the text is displayed on the screens. Then you can find that all the touchscreen can work.

2 This method is just tested on win 10 PC.

Working with Raspberry Pi

Supports Raspbian/Ubuntu mate/Windows 10 IoT Core

When working with Raspberry Pi, you should set the resolution of the LCD by yourself, or else the LCD screen will not work. For more detail information, please read the following section.

Download the Raspbian image from [Raspberry Pi web site](#). Write the image to a TF card and append the following lines to the config.txt file which is located in the root of your TF card:

```
max_usb_current=1  
hdmi_group=2
```

```
hdmi mode=82
hdmi_cvt 1920 1080 60 6 0 0 0
```

You must make sure that there are no spaces on either side of the equal sign.

Connect the Touch interface of LCD to USB port of Raspberry Pi

Connect HDMI interface of LCD to HDMI port of Raspberry Pi

Save and connect the TF card to your Pi then power up.

Rotation

Note: To rotate the touch, you can re-compile the kernel as well. There is an example for reference (use 7inch HDMI LCD (C).)

- [Re-Compilation Method](#)

Display Rotating

To rotating the display, you can append this statement to the config file

```
display_rotate=1 #1: 90; 2: 180; 3: 270
```

Reboot the Raspberry Pi

```
sudo reboot
```

Touch rotating

With the operation above. The screen could rotate in display. However, the touch works improperly. To rotate the touch as display, you could do as below:

1. install libinput

```
sudo apt-get install xserver-xorg-input-libinput
```

2. create an xorg.conf.d folder

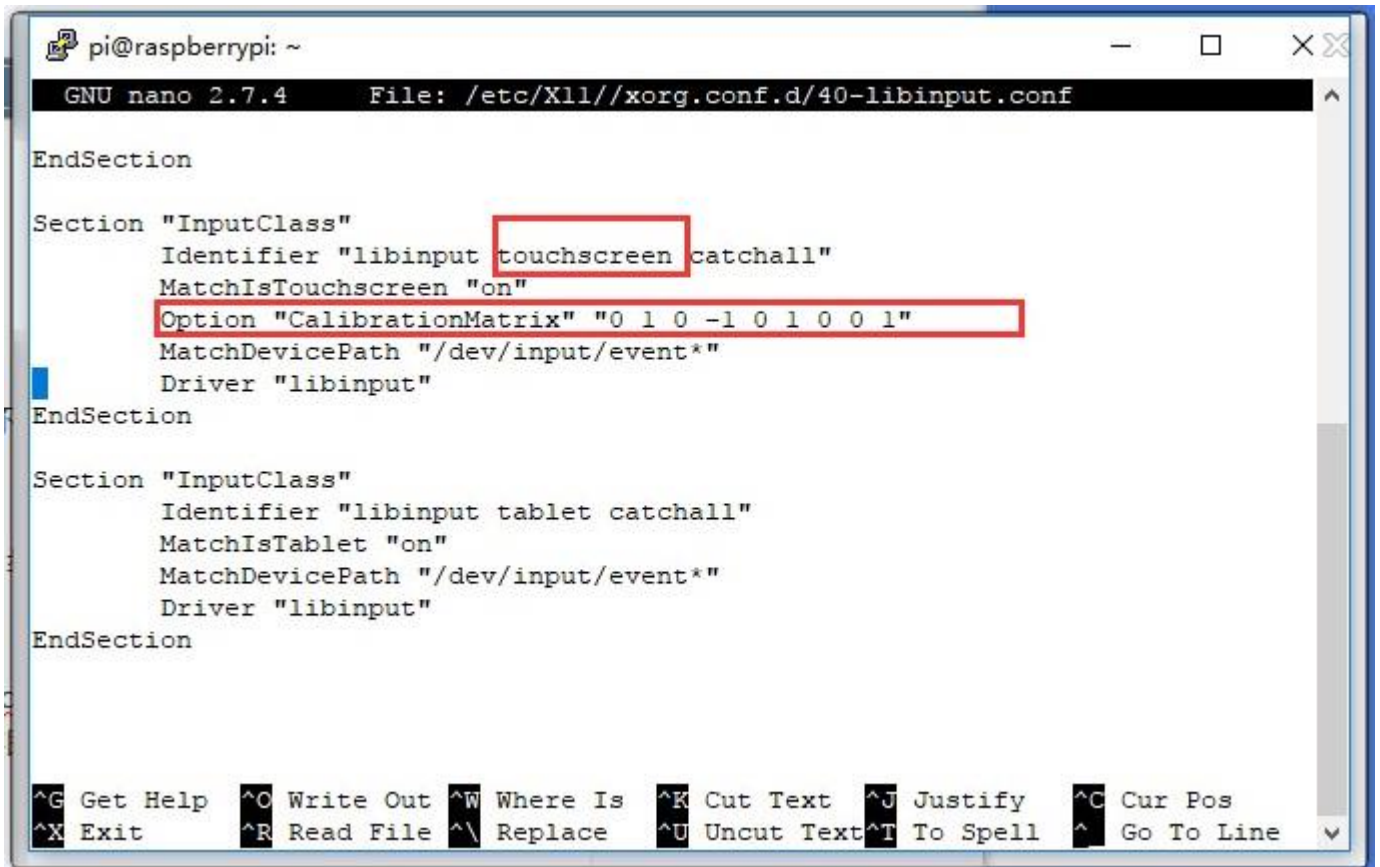
```
sudo mkdir /etc/X11/xorg.conf.d
```

3. copy file 40-libinput-conf to the folder which we created

```
sudo cp /usr/share/X11/xorg.conf.d/40-libinput.conf /etc/X11/xorg.conf.d/
```

4. Append a statement to touchscreen part of the file as below:

```
sudo nano /etc/X11/xorg.conf.d/40-libinput.conf
```



```
pi@raspberrypi: ~
GNU nano 2.7.4 File: /etc/X11//xorg.conf.d/40-libinput.conf
EndSection

Section "InputClass"
    Identifier "libinput touchscreen catchall"
    MatchIsTouchscreen "on"
    Option "CalibrationMatrix" "0 1 0 -1 0 1 0 0 1"
    MatchDevicePath "/dev/input/event*"
    Driver "libinput"
EndSection

Section "InputClass"
    Identifier "libinput tablet catchall"
    MatchIsTablet "on"
    MatchDevicePath "/dev/input/event*"
    Driver "libinput"
EndSection

^G Get Help  ^O Write Out  ^W Where Is  ^K Cut Text   ^J Justify    ^C Cur Pos
^X Exit      ^R Read File  ^\ Replace   ^U Uncut Text ^T To Spell   ^_ Go To Line
```

5. save and reboot your Pi

```
sudo reboot
```

After completing these steps. The LCD could rotate 90 degree both display and touch.

Note:

90 degree: Option "CalibrationMatrix" "0 1 0 -1 0 1 0 0 1"

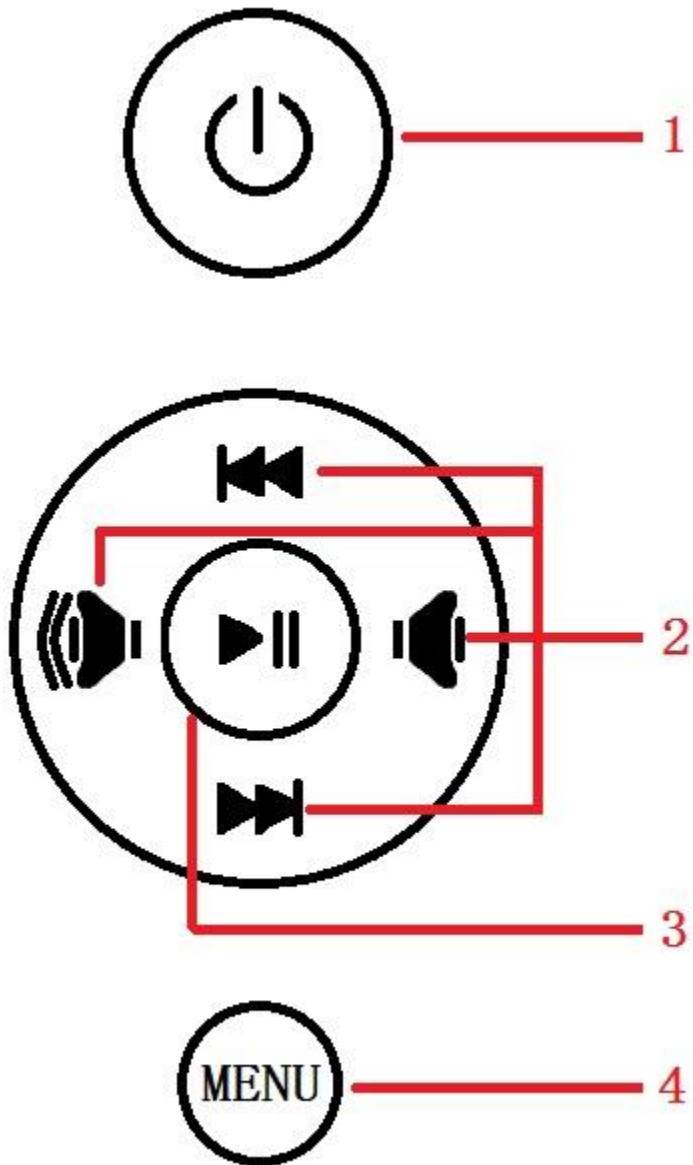
180 degree: Option "CalibrationMatrix" "-1 0 1 0 -1 1 0 0 1"

270 degree: Option "CalibrationMatrix" "0 -1 1 1 0 0 0 0 1"

Demo video about rotating

Keys description

13.3inch HDMI LCD (H) (with case)



- 1: Open or Close LCD display. If you don't need the LCD for long time, you can use this button to reduce consumption
- 2: Direction button
- 3: "OK" function
- 4: Open menu and "Return"function

13.3inch HDMI LCD (H) V2 (with case)



- Power: Turn on/off LCD
- Menu: Open OSD Menu/OK
- Up/Left: Direction buttons
- Down/Right: Direction buttons
- Exit: Return

Resource

- [13.3inch HDMI LCD \(H\) \(with case\) User Manual PDF](#)
- [13.3inch HDMI LCD \(H\) \(with case\) V2 Use Manual](#)

3D Drawing

- [13.3inch HDMI LCD \(H\) \(with case\) 3D Drawing](#)

External guides

- [Working with Volumio](#)