

## Fitting Instructions for RRP 632

### Yamaha T7 Soft Luggage Racks



**NOTE: BEFORE COMMENCING WORK ON THE CONVERSION, TAKE TIME TO READ THE INSTRUCTIONS CAREFULLY. ALL WORK CAN BE CARRIED OUT BY A COMPETENT MECHANIC, BUT IF YOU ARE UNSURE PLEASE CONTACT US OR A MECHANICAL PROFESSIONAL.**

**KEEP ALL PARTS THAT ARE REMOVED, AS IT IS POSSIBLE TO REMOVE OUR KITS AND RETURN THE BIKE TO STANDARD, IF REQUIRED**

1. Remove rear seat or OEM rear rack, then remove all four bobbins (2 on each side) using torx bit and discard all four bobbins.



2. Before fitting the racks, ensure the rubber buffers are attached as per photo.



3. Use a small amount of Loctite on M8 x 70 CSK screws and attach right panel, using long tapered spacers as shown.  
**DO NOT TIGHTEN.**





4. Remove both M8 screws attaching the footrest hangers.

If no passenger footrests are needed, discard OEM footrest hanger, and both M8 OEM screws, secure tube mount to frame using M8 x 20 CHS (supplied) apply Loctite to both screws. Re use both OEM M8 washers.

**DO NOT TIGHTEN FULLY.**



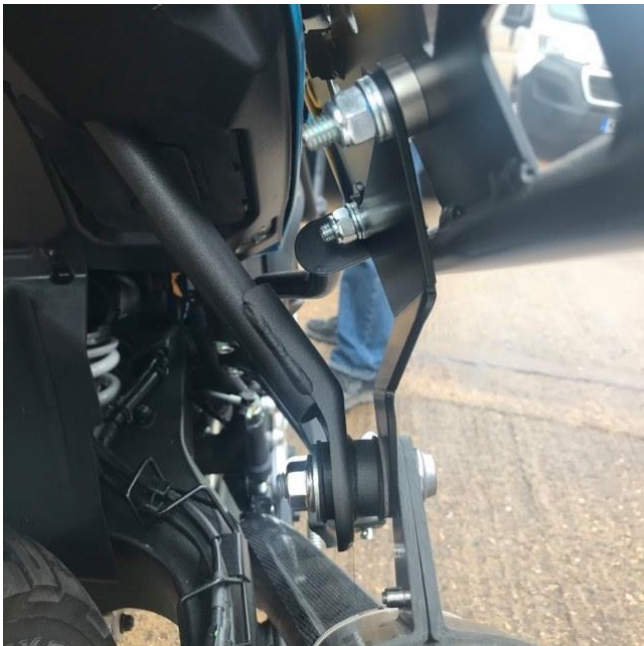
5. Apply Loctite to OEM screws and place right hand tube mount on top of the footrest hanger then attach to the frame.

**DO NOT TIGHTEN**





6. Remove M8 silencer bolt, washer and nut, then insert M8 x 35 CSK screw with form washer from outside of rack through front lower hole. Place the thick spacer, silencer support bracket, then lower rack support L bracket, fit M8 washer and nyloc nut, do not tighten.
- Fit other M8 x 35 CSK screw and form washer through side rack (as shown in pic) then the thick spacer on inside and silencer support bracket, fit M8 washer and nut, do not tighten.
- Re-fit M8 silencer bolt through silencer support bracket, silencer and frame tube, re-fit M8 washer and nut.





7. Tighten both upper M8 CSK screws (18Nm) and both lower M8 CHS (18Nm) with 5mm and 6 mm allen bits respectively.



8. Repeat Process for Opposite side



9. Replace seat.