



QUICK SETUP GUIDE

**LGX® PRO and LGX®
PRO 2.85 Extruders**

QUICK SETUP GUIDE

Read this Quick Setup Guide for proper extruder installation.



Each LGX[®] PRO extruder is supplied with:

- 1x LGX[®] PRO 1.75mm feeder;
- 1x Custom Nema17 30mm pancake stepper motor;
- 1x Bowden Interface Plug (with threaded metal push-fit);
- 1x 2mm Hex Key (recommended tool);
- 1x Product Line Information Brochure;
- 1x Powered By Bondtech sticker.

Also shipping with additional accessories:

- 4x M3x23 mm Stud with 5mm Hex with M3x4 thread;
- 30mm PTFE tube to use in the Direct Drive Interface Plug.

 M3x27 Low Head

 M3x10 Low Head

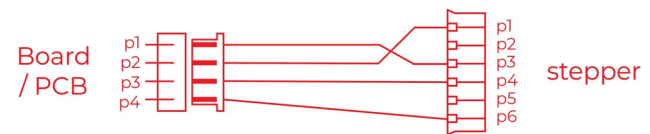
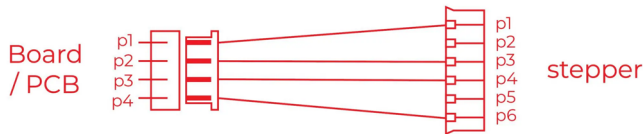
CONNECTION

Do not connect a LGX® PRO stepper motor to a printer's cable without checking the wires and pins of the connection cable.

Not all printers are ready for a direct connection with the LGX® PRO. Some use stepper drivers with no protection and this may damage them.

Before connecting a LGX® PRO Pro to any 3D printer check if the connector pins are wired as shown below:

After start of service, if the LGX® PRO is turning in the wrong direction, swap the top (or bottom) pair of wires to make a correction:



LEVER POSITIONS



Position 0

Load or unload filament without pressure from the drive gears.

Position 1

For rigid materials.

Position 2

For semi-flexible materials
Shore hardness of ~95A or when you need more grip on rigid materials.

Position 3

For flexible materials
Shore hardness between 85 and 95A.

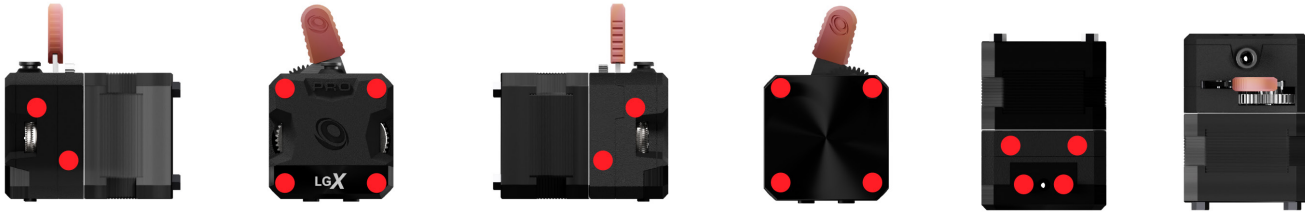
Position 4

For soft materials
Shore hardness between 75 and 85A.

Position 5

For very soft materials
Shore hardness between 60 and 75A.

ADDITIONAL MOUNTING POINTS



Use the supplied studs to replace the 4 screws of the stepper motor and use them as additional mounting points.

Be aware the stepper motor threads are made of Aluminum, and they are delicate.

Don't use too much Torque to tighten the studs. Preferably use finger force only.

You can find these studs on the accessories bag in your LGX[®] PRO package.

They have an M3 thread with 4 mm depth.

INTERFACE PLUG AND MODULARITY



Anodized aluminium interface plug, providing a rigid mount for Copperhead, Mosquito, Mosquito Magnum and Mosquito Magnum+ Air and Liquid.

The interface Plug geometry supports modules like LGX[®] ACE, LGX[®] Shortcut, LGX[®] Bowden Adapter and LGX[®] Revo Micro adapter.

You can find the geometry of the Interface Plug [HERE](#).

Mounting the LGX® PRO

Mounting the LGX® PRO 2.85



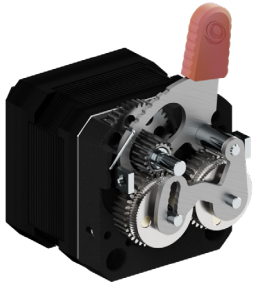
MAXIMUM WORKING TEMPERATURE



The housing parts are professionally printed with glass filled nylon for maximum strength and precision as well as higher temperature resistance.

The maximum operating temperature with the LGX® PRO is 100°C with a stepper motor current lower than the maximum recommended current of 1A RMS.

HARDENED STEEL DRIVETRAIN MAINTENANCE REQUIRED



Make sure gears are always lubricated to prevent wear and clean the gears from debris every 100 hours of print time.

RECOMMENDED SOFTWARE SETTINGS

		LGX [®] PRO	LGX PRO [®] 2.85				
Marlin	Esteps	410	435	Microstepping	1/16	Tmc current	700-1000 mA (RMS)
Klipper	Rotation Distance	7.805	7.356	#gear_ratio	0	Run current	700-1000 mA (RMS)
RRF	Esteps	410	435	Microstepping	1/16	Peak current	1-1.415 A

