



www.petlibro.com

PETLIBRO

Stainless Steel
Pet Fountain

Model: PLWF006

©Libro Corp. All Rights Reserved.

Manufacturer: Shenzhen Libro Technology Co., Ltd.

Address: 12/F, Tower B, GALAXY WORLD, Yabao Road,
Longgang District, Shenzhen, China

JP Importer: 株式会社神州

Made in China

PLWF006_V1.0

CAN ICES-3 (B)/NMB-3(B)



This device complies with Part 15 of the FCC Rules. Operation is subject to the following two conditions: (1) this device may not cause harmful interference, and (2) this device must accept any interference received, including interference that may cause undesired operation.



Model : PLWF006

USER MANUAL

Stainless Steel
Pet Fountain

Before using the product, please read this manual thoroughly and retain it for future reference.

CONTENTS

SAFETY PRECAUTIONS	01
WARRANTY	04
PRODUCT OVERVIEW	05
HOW TO USE	06
CARE INSTRUCTIONS	09
TROUBLESHOOTING	10
SPECIFICATIONS	11

SAFETY PRECAUTIONS

! WARNING

- Dispose of all packaging materials properly. Keep polybags away from children and pets as these bags could cause suffocation.
- Do NOT allow children to play with, in or around the pet water fountain.
- To avoid injury, please keep close supervision when the appliance is used near children.
- Do NOT use the water fountain with pets not able to reach the water tray or with any physical disability.
- Do NOT place any foreign object in the water tank.
- Do NOT disassemble the pet fountain other than components as instructed in this User Manual.
- Do NOT use the pet fountain for anything other than its intended use.
- Only use attachments recommended or sold by the manufacturer. The use of attachments not recommended or sold by the manufacturer may cause an unsafe condition. Do NOT modify the pet fountain.
- Do NOT operate any appliance if the unit is malfunctioning or has been damaged. Do not attempt repairs on the device yourself. Contact our customer service immediately for further instructions.
- Be sure to disconnect the power supply for safety when the appliance is not in use.
- Please disconnect the power supply before maintaining and cleaning the machine.
- Always unplug the appliance when not in use; or before putting on or taking off parts and before cleaning.
- The power adapter and wire plug must not be flooded during cleaning.
- This product is for indoor use only.

- This product is not allowed to run without water.
- Never pull the electrical power cord to remove the plug from the wall outlet.
- If the plug of this device gets wet, turn off the electricity of that wall outlet. Do NOT attempt to unplug.
- Check the device after installation. Do NOT plug in if there is water on the contact points or plug.
- To avoid tripping, always position the power cord out of the way of foot traffic.
- Do not use the appliance in the bathroom.
- Replace the filter at least once every 2 weeks when the flow rate has noticeably reduced. For two or more cats, you may need to replace the filters more regularly if it becomes blocked.

CAUTION

- Do NOT allow pets to chew on or swallow any parts. If you are concerned about the power cord, purchase a cord conduit (a hard-plastic protector) at any hardware store to protect the power cord.
- If an extension cord is necessary, one unit with a proper rating should be used.
- Do NOT install or store the pet water fountain where it will be exposed to weather or temperatures below 0°C / 40°F.
- Read and observe all important notices listed on the pet water fountain and in the packaging.

This device complies with Part 15 of the FCC Rules. Operation is subject to the following two conditions:

- (1) this device may not cause harmful interference, and
- (2) this device must accept any interference received, including interference that may cause undesired operation.

Changes or modifications to this unit not expressly approved by the party responsible for compliance could void the user's authority to operate the equipment.

NOTE:

This equipment has been tested and found to comply with the limits for a Class B digital device, pursuant to Part 15 of the FCC Rules. These limits are designed to provide reasonable protection against harmful interference in a residential installation. This equipment generates, uses and can radiate radio frequency energy and, if not installed and used in accordance with the instructions, may cause harmful interference to radio communications. However, there is no guarantee that interference will not occur in a particular installation. If this equipment does cause harmful interference to radio or television reception, which can be determined by turning the equipment off and on, the user is encouraged to try to correct the interference by one or more of the following measures:

- Reorient or relocate the receiving antenna.
- Increase the separation between the equipment and receiver.
- Connect the equipment into an outlet on a circuit different from that to which the receiver is connected.
- Consult the dealer or an experienced radio/TV technician for help.

This device and its antenna(s) must not be co-located or operation in conjunction with any other antenna or transmitter.

Radiation Exposure Statement

To maintain compliance with FCC's RF Exposure guidelines, This equipment should be installed and operated with minimum distance of 20cm from your body.

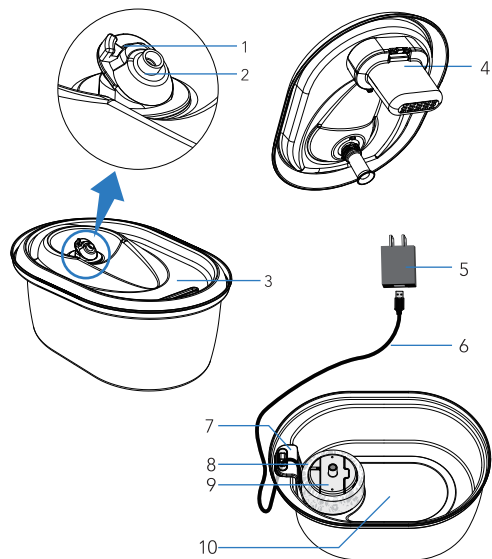
WARRANTY

- 1-year warranty
- Lifetime support

For guidance on product use and warranty extension, please contact our brand after-sales staff via email: **support@petlibro.com**

If any questions related to orders, please contact the seller through the shopping platform.

PRODUCT OVERVIEW



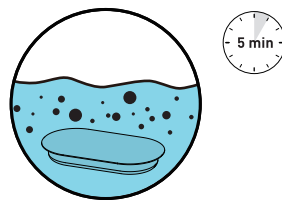
1. Water Flow Controller
2. Water Outlet
3. Drinking Basin

6. Power Cable
7. Pump Holder
8. Sponge
9. Water Pump
10. Water Tank

HOW TO USE

Step 1

Soak the filter in a clean bowl for 5 minutes.

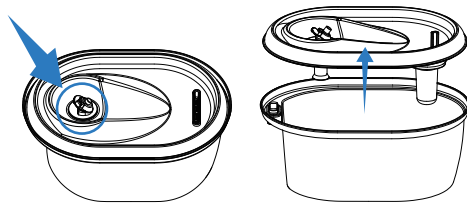


Notes:

- 1-The filter must be fully soaked before the fountain is turned on; otherwise, water may not smoothly disperse through the filter and cause spillage.
- 2-Do not soak the filter in the water tank of the fountain in case of any surface dust.

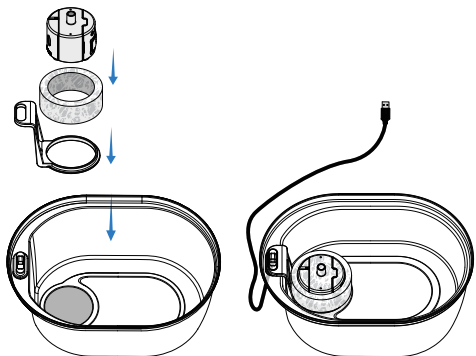
Step 2

Open the cover by lifting the handle.



Step 3

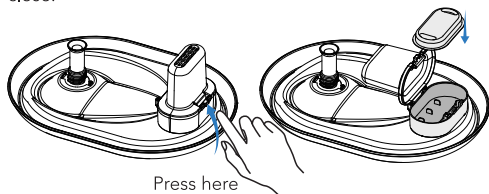
Install the pump holder first, then put the pump into the sponge. Press the pump to make the suction cup under the pump sticks tightly.



Note: Make sure the pump is fixed in place in the tank.

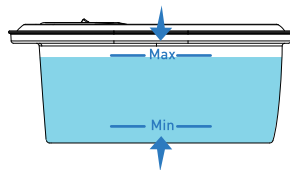
Step 4

Put the activated carbon filter in the filter housing and close.



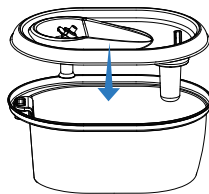
Step 5

Add some water.



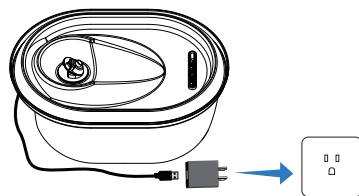
Step 6

Put back the cover to form a seal.



Step 7

Connect the power adaptor.

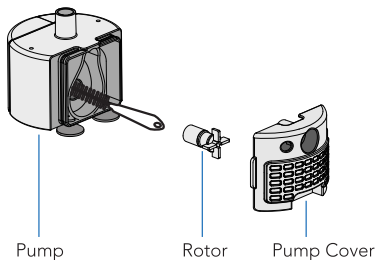


CARE INSTRUCTIONS

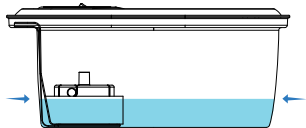
1. Replace the carbon filter and sponge at least once every 2 weeks.

2. Clean the pump and fountain at least once every 2 weeks.

Take off the pump cover and rotor. Use the brush to clean the parts with water.



3. Keep the water level above the pump, as the pump will fail if it runs without water.



TROUBLESHOOTING

Problem	Solution
Water keeps spilling out of the water tray.	The filter may not be fully soaked. Please soak the filter in a clean bowl (not in the water tank) for 5 minutes before the first use.
The pump stops working.	<ol style="list-style-type: none">1. Fill in water between MIN and MAX. The pump will fail if it runs dry.2. Clean the pump, water tank, and drinking basin.3. If the above solutions don't work, please contact us at support@petlibro.com
How often should I change the filters? Where to get them?	It's recommended to replace the filter and sponge at least once every 2 weeks. Please contact us at support@petlibro.com to purchase new filters.
Why do I need to soak the filter before first use?	The filters absorb more water (and therefore clean more water) when they're wet and expanded. Soaking the filter removes particulate matter that may have settled on the filter.
Water output speed slows down.	<ol style="list-style-type: none">1. For the first use (or reuse after long-time storage), the water pump needs to discharge air, it's normal if the water output speed slows down.2. It is dirt in the pump, please refer to "CARE INSTRUCTIONS" in the manual to clean it.

SPECIFICATIONS

Model	PLWF006
Power Adapter	Input: 100-240V 50/60Hz Output: 5V/1A
Material	SUS 304 stainless steel
Water Tank Capacity	3L
Operating Temperature	0°C-60°C / 32°F-140°F
Dimensions	27.6x20.5x12mm / 10.8x8.1x4.7in
Net Weight	717g/1.6 lbs