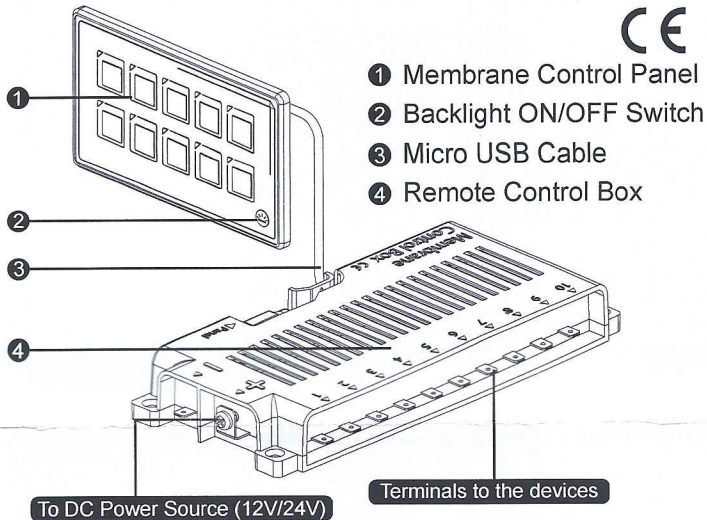
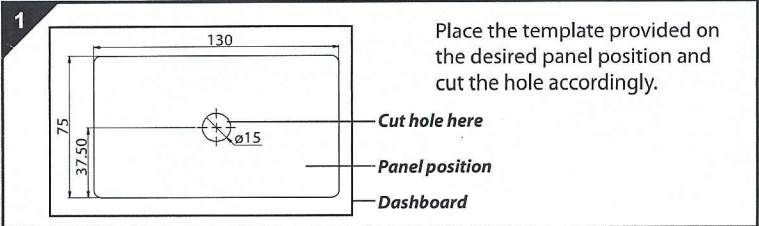


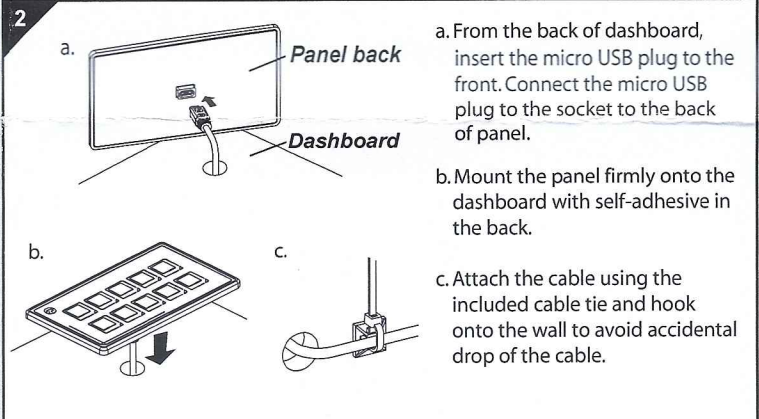
SP5110A 10P Membrane Control Panel with Backlight Module



Installation Instructions



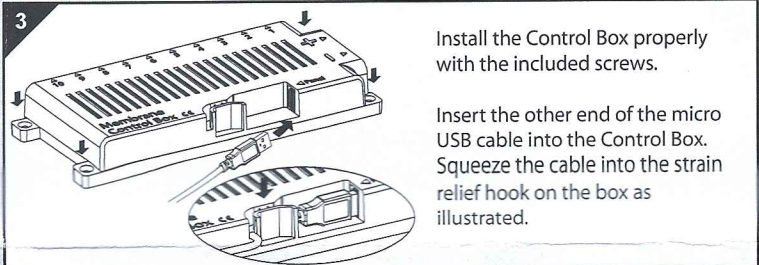
Place the template provided on the desired panel position and cut the hole accordingly.



a. From the back of dashboard, insert the micro USB plug to the front. Connect the micro USB plug to the socket to the back of panel.

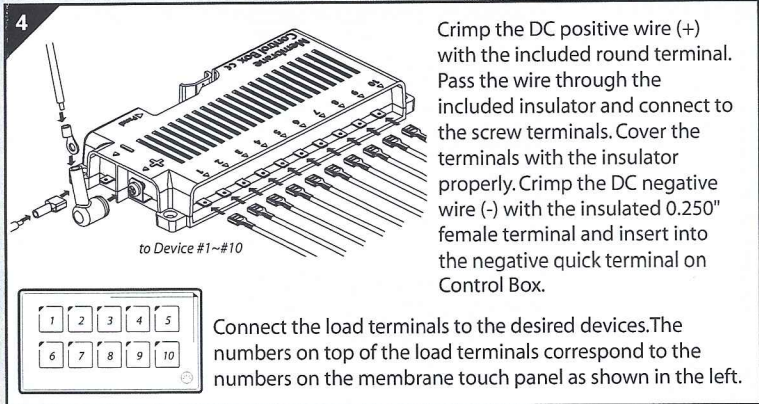
b. Mount the panel firmly onto the dashboard with self-adhesive in the back.

c. Attach the cable using the included cable tie and hook onto the wall to avoid accidental drop of the cable.



Install the Control Box properly with the included screws.

Insert the other end of the micro USB cable into the Control Box. Squeeze the cable into the strain relief hook on the box as illustrated.



Crimp the DC positive wire (+) with the included round terminal. Pass the wire through the included insulator and connect to the screw terminals. Cover the terminals with the insulator properly. Crimp the DC negative wire (-) with the insulated 0.250" female terminal and insert into the negative quick terminal on Control Box.

Connect the load terminals to the desired devices. The numbers on top of the load terminals correspond to the numbers on the membrane touch panel as shown in the left.

Features

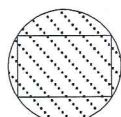
- Ultra Compact panel size (60% smaller than traditional panels)
- Easy to install – no mounting depth, minimum hole drilling
- Flexible wiring – Control Relay Box installed 1m away from the touch panel
- IP67 - Protected even under temporary water immersion (Panel only)
- ON-indication LED / 10A Self-resettable fuse for each branch
- Backlight module allowing easy operation in darkness
- Very low standby current
- Programmable momentary button – all buttons can be programmed to be momentary (ideal for horn or wiper applications)
- 60pcs Assorted Graphic and Text labels stickers set included
- App remote control on cellphone (Android / iOS)
- Customizable labels, panel styles, background in the virtual panel
- Battery Voltage Level monitor and Low Voltage Warning Alarm
- Pairs up to 4 different control boxes and easily switching between boxes
- App memorizes label and panel styles of paired boxes after switching between boxes

Specifications

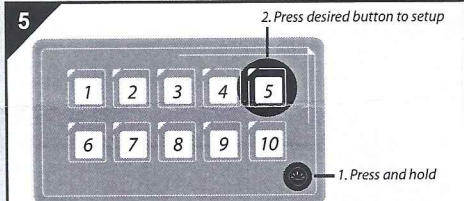
- Faceplate | PET membrane touch panel
- Circuit Protection | Built-in Resettable Fuse (PPTC)
- Switch Ratings | 10A per branch
- Panel Rating | Max Cumulative Amp: 60A
- Voltage Rating | DC 11 - 30V
- Notes | IP67 (Membrane Panel)
- Power Terminals | M5 stud size Ring terminals
- Load Terminals | .250 Quick Terminals (Male)

Actual Panel Size

This template is provided to help you install the membrane panel correctly. Cut out template and trace onto the dashboard. Then drill a hole at the shielded area.



Cut hole here



(Momentary Button Set-up) To set up a specific button to be momentary (Push-On), press and hold the backlight button to enter setup mode (white backlights will be blinking). Press the desired button to enable momentary function on it, press again to disable. The ON-indication LED will be blinking for Momentary buttons and stays ON for normal buttons during setup mode. Release the backlight button to exit setup mode.

*All buttons can be set to be momentary; only 1 momentary button can be pressed at the same time.

1

Download on the App Store

GET IT ON Google Play

My Control Panel

Bluetooth ON

GPS ON

2

CH9141BLE2U Connected

DC 13.3V

3

Settings

- BUTTON LABELS
- PANEL STYLES
- SELECT BACKGROUND
- DEVICE MANAGEMENT**
- SETTINGS
- ABOUT

4

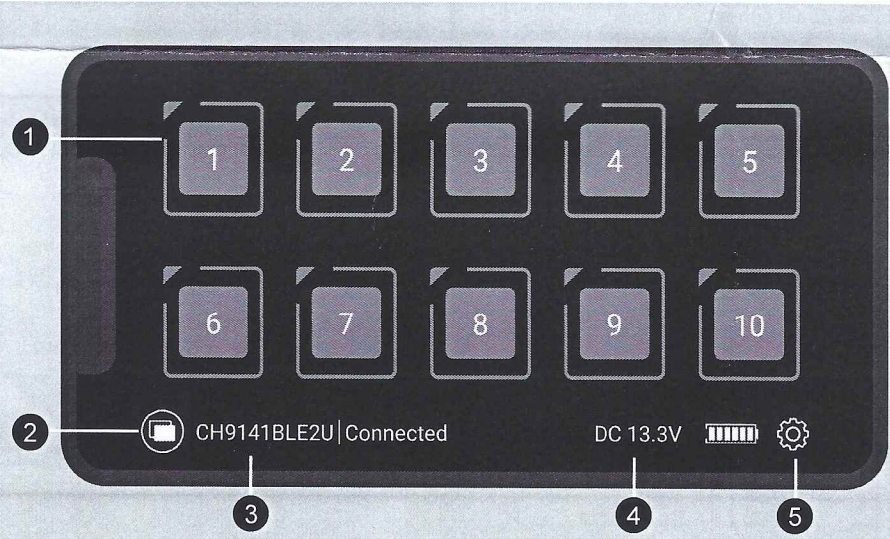
Device Management

My device Pair device

In search device

CH9141BLE2U
84:C2:E4:08:9A:F5

Password: 0000



- 1 Buttons #1~#10 (Customizable in Settings)
- 2 Switching between different control boxes
- 3 Current device | Connection Status
- 4 System voltage monitor
- 5 Settings