



User Manual for X100



Thank you for buying the Professional Gaming Mouse, please read the manual carefully when using this mouse.

Content:

Gaming Mouse x 1
CD Driver x 1

Feature:

- AVAGO3310 laser engine
- 6 programmable buttons
- USB 2.0 full speed transmission, up to 7200 DPI resolution
- 1000Hz Report Rate, Tracking speed: 60 inch/sec,20G acceleration
- Adjustable illumination modes
- Gaming software with profile/macro editor

Tip:

Please make sure the gaming mouse is connected to your computer before and after installing the software.

Installation:

1. Connect this gaming mouse with your computer by USB port,for first time usage wait around 15 seconds until drivers will be installed.
2. Download the mouse driver from allreLi official website (www.allreli.com) or installed the driver by the driver CD.
3. After completing the installation, you may want to restart your computer. (optional)
4. Open the application and customize your gaming mouse to your preference.

Basic settings:

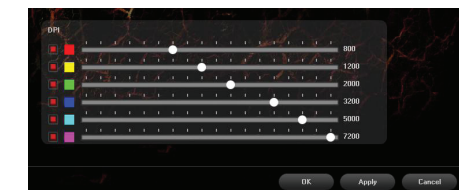
Basic setting tab allows you to assign individual functions to each button.

1. Each button can be set individually by click on list of programmable buttons, after this action the pop-up window will show available functions which can be selected by left click.
2. Select required function and click “Apply” to save the settings.



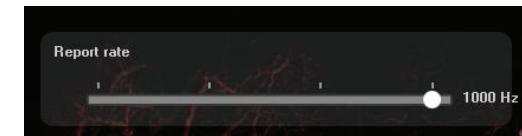
DPI settings:

1. The last cluster of slider bars controls the DPI speeds and what LEDs they correspond to. In these settings you can also set backlight color, backlight mode and resolution 250 – 7200 DPI.
 2. By sliding the sliders, the DPI speeds can be changed to match the LED color you want
 3. Click apply to save the settings
- Gaming software allows you to predefine up to four DPI profiles, which can be switched “on the fly” using the DPI button. Each profile can be set individually in “Basic Settings” tab.



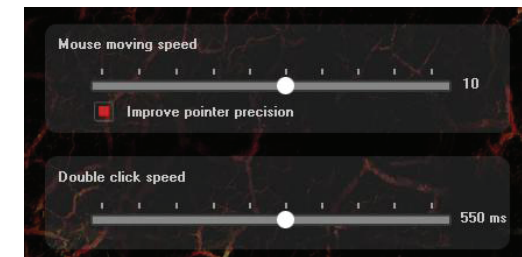
Report Rate:

The “Report Rate”, “Mouse-moving Speed”, can be changed using the slider bars.--Basic Settings and choose one of 4 options (125Hz, 250Hz, 500 Hz, 1000 Hz), then click “Apply” to save the settings.

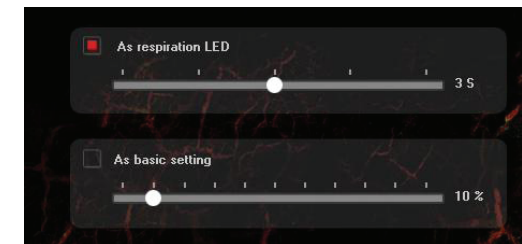


System settings:

In this settings you can adjust mouse moving speed, scrolling speed and double click speed. To set these functions go to “Advanced settings” and select required speed for each function. Then Click “Apply” to save the settings.



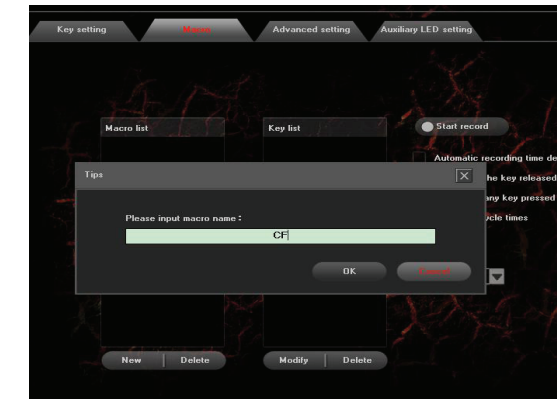
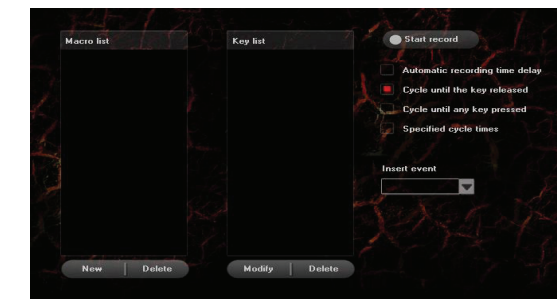
LED light setting:



Advanced settings

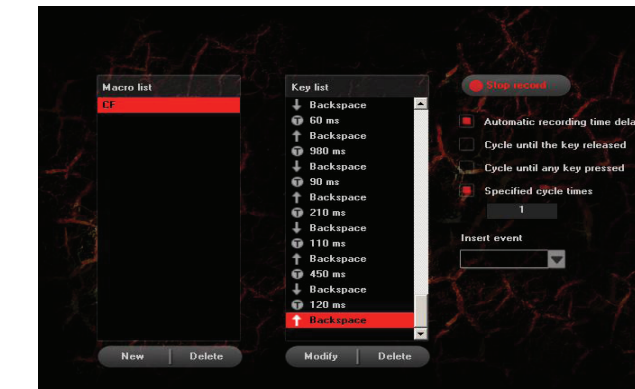
Macro and profile editor Adding a macro and key list

To add a macro click “Advanced Settings” and enter name of macro in box “Macro name”, e.g. “CF”. Click “New” and then “Start recording”. Use the keyboard to enter a combination of buttons which you want to assign into this macro, e.g. “Shift+A+B”, click “Stop recording” to finish recording. Enter a number in box “Loop times” to set how many times macro should be used after single button press. Click “Confirm” to finish and close the window.



Select macro:

To select macro click “Basic settings” tab and then click on box “Macro Key”. In pop-up window select the name of previously recorded macro. Select one of three options on the right and then click “OK” to finish and close the window. Then Click “Apply” to save the settings.



If you have any problem or suggestion, please contact us by follow information.

Manufactured by Shenzhen Newidea Technology CO.,LTD for ALLRELI Technology Company Limited.
Email: support@allreli.com
Website: www.allreli.com

